

ONLINE DATA SUPPLEMENT

Tables S1 to S7

Figures S1 to S2

Table S1. Raw CFU count data from mouse lungs.

Time point	Treatment group	Mouse	Agar plates	Final (4-week) CFU counts for the following 10-fold dilutions: (highlighted cell used to calculate CFU/lung)						CFU/lung	Log ₁₀ CFU/lung	
				0	1	2	3	4	5			
Day -41 (Week -6)	Pre-treatment (run 1)	1	Plain ¹	11	2					55	1.75	
			Charcoal	Contam.	1							
		2		Plain ¹	17	2					85	1.93
				Charcoal	Contam.	Contam.						
	Pre-treatment (run 2)	3		Plain ¹	30	6					175	2.25
				Charcoal	35	3						
		4		Plain ¹	34	4					225	2.35
				Charcoal	45	7						
	Pre-treatment (run 3)	5		Plain ¹	37	3					330	2.52
				Charcoal	66	5						
		6		Plain ²	31	0					165	2.22
				Charcoal	33	3						
Day 0	Pre-treatment (run 1)	1	Plain	+++	++	+	~1000	113	11	5,500,000	6.74	
			Charcoal	+++	++	+	~1000	94	3			
		2		Plain	+++	++	+	~600	57	9	3,100,000	6.49
				Charcoal	+++	++	+	~600	62	7		
		3		Plain	+++	++	+	~1000	90	9	4,500,000	6.65
				Charcoal	+++	++	+	~1000	77	5		
	Pre-treatment (run 2)	4		Plain	+++	++	+	~500	23	5	1,400,000	6.15
				Charcoal	+++	++	+	~500	28	2		
		5		Plain	+++	++	+	~1000	95	10	5,000,000	6.70
				Charcoal	+++	++	+	~1000	66	9		
		6		Plain	+++	++	+	~200	28	2	1,400,000	6.15
				Charcoal	+++	++	+	~200		1		
	Pre-treatment (run 3)	7		Plain	+++	++	+	~1000	131	3	1,500,000	6.18
				Charcoal	+++	++	+	~1000		3		
		8		Plain	+++	++	+ / ++	+	~200	18	9,000,000	6.95
				Charcoal	+++	++	+ / ++	+	~200	11		
		9		Plain	+++	++	+	~500	46	4	2,300,000	6.36
				Charcoal	+++	++	+	~500	39	2		
Day 1	Untreated	1	Plain	+++	+++	++	+	~120	9	4,500,000	6.65	
			Charcoal	+++	+++	++	+	75	Contam.			
		2		Plain	+++	++ / +++	++	+		14	8,500,000	6.93
				Charcoal	+++	++ / +++	Contam.	+		17		
		3		Plain	+++	++	+ / ++	+	55	8	3,050,000	6.48
				Charcoal	+++	++	+ / ++	+	61	11		
		4		Plain	+++	++	+	~1000	~150	16	11,000,000	7.04
				Charcoal	+++	++	+	~1000	~103	22		
		5		Plain	Contam.	Contam.	+	~1000	~80	10	5,000,000	6.70
				Charcoal	Contam.	Contam.	+	~1000	~80	8		
Day 1	Clofazimine A Day 1, 25 mg/kg	1	Plain	+++	+++	++	+	~200-250	20	12,500,000	7.10	
			Charcoal	+++	+++	++	+	~200-250	25			
		2		Plain	Contam.	+++	++	+	98	16	8,000,000	6.90
				Charcoal	Contam.	+++	++	+	125	9		
		3		Plain	+++	++	+ / ++	~200	19	0	950,000	5.98
				Charcoal	+++	++	+ / ++	~250	17	4		

Table S1. Raw CFU count data from mouse lungs.

Time point	Treatment group	Mouse	Agar plates	Final (4-week) CFU counts for the following 10-fold dilutions: (highlighted cell used to calculate CFU/lung)						CFU/lung	Log ₁₀ CFU/lung	
				0	1	2	3	4	5			
Day 1	Clofazimine A	4	Plain	Contam.	++	+ / ++	+	40	2	2,000,000	6.30	
			Charcoal	Contam.	++	+ / ++	+	18	1			
		5	Plain	+++	++	+	~125	10	1	800,000	5.90	
			Charcoal	+++	++	+	~120	16	1			
	Clofazimine B Day 1, 12.5 mg/kg	1	Plain	+++	++	+	~300	33	3	2,650,000	6.42	
			Charcoal	+++	++	+	~500	53	8			
		2	Plain	++	++	+ / ++	~200	25	2	1,450,000	6.16	
			Charcoal	++	++	+ / ++	~200	29	4			
		3	Plain	+++	++ / +++	++	+	~91	11	7,000,000	6.85	
			Charcoal	+++	++ / +++	++	+	~93	14			
		4	Plain	Contam.	Contam.	++	+	~150	23	11,500,000	7.06	
			Charcoal	Contam.	Contam.	++	+	~150	17			
		5	Plain	++	++	+ / ++	+	~80	6	3,800,000	6.58	
			Charcoal	++	++	+ / ++	+	76	8			
		Clofazimine C Day 1, 6.25 mg/kg	1	Plain	+++	++	+ / ++	+	41	5	2,050,000	6.31
				Charcoal	+++	++	+ / ++	+	39	2		
	2		Plain	+++	+++	++	+	81	7	4,050,000	6.61	
			Charcoal	+++	+++	++	+	47	5			
	3		Plain	+++	+++	++	+	~80	0	2,550,000	6.41	
			Charcoal	+++	Contam.	++	+	51	Contam.			
	4		Plain		++ / +++	++	+	27	0	1,350,000	6.13	
			Charcoal		++ / +++	++	+	22	3			
	5		Plain	+++	++	+ / ++	+	44	0	2,650,000	6.42	
			Charcoal	+++	++	+ / ++	+	53	0			
	Clofazimine D Day 1, 200 mg/kg	1	Plain	+++	++	+ / ++	~500	68	13	6,500,000	6.81	
			Charcoal	+++	++	+ / ++	~500	99	12			
		2	Plain	+++	++	+ / ++	~150	17	3	1,300,000	6.11	
Charcoal			+++	++	+	~200	26	2				
3		Plain	+++	+++	+ / ++	+	70	12	6,000,000	6.78		
		Charcoal	+++	+++	+ / ++	+	130	10				
4		Plain	+++	++	+ / ++	~150	30	0	2,150,000	6.33		
		Charcoal	+++	++	+ / ++	~200	43	2				
5		Plain	+++	++	+	~250	49	4	2,900,000	6.46		
		Charcoal	+++	++	+	~300	58	7				
Clofazimine E Day 1, 100 mg/kg	1	Plain	Contam.	++ / +++	+ / ++	+	18	1	1,250,000	6.10		
		Charcoal	Contam.	++ / +++	+ / ++	+	25	1				
	2	Plain	+++	++	+ / ++	+	24	0	1,450,000	6.16		
		Charcoal	+++	++	+ / ++	+	29	2				
	3	Plain	+++	++	+ / ++	+	19	0	1,350,000	6.13		
		Charcoal	+++	++	+ / ++	+	27	0				
	4	Plain	+++	++	+ / ++	~200	26	0	1,750,000	6.24		
		Charcoal	+++	++	+ / ++	~250	35	2				
	5	Plain	0	++	+ / ++	+	14	1	1,350,000	6.13		
		Charcoal	+++	++	+ / ++	+	27	0				

Table S1. Raw CFU count data from mouse lungs.

Time point	Treatment group	Mouse	Agar plates	Final (4-week) CFU counts for the following 10-fold dilutions: (highlighted cell used to calculate CFU/lung)						CFU/lung	Log ₁₀ CFU/lung
				0	1	2	3	4	5		
Day 1	Clofazimine F Day 1, 50 mg/kg	1	Plain	+++	++	+/>++	+	55	4	2,750,000	6.44
			Charcoal	+++	++	+/>++	+	36	4		
		2	Plain	+++	++	+/>++	+	21	2	1,700,000	6.23
			Charcoal	Contam.	++	Contam.	+	34	3		
		3	Plain	+++	+++	++	+	79	4	4,850,000	6.69
			Charcoal	+++	+++	++	+	97	8		
		4	Plain	+++	+++	++	+	~120	12	9,000,000	6.95
			Charcoal	+++	+++	++	Contam.	~100	18		
		5	Plain	Contam.	+/+++	++	+/>++	136	5	7,500,000	6.88
			Charcoal	Contam.	+/+++	++	+/>++	155	15		
Day 2	Untreated	1	Plain	+++	++	+	~300	29	4	2,050,000	6.31
			Charcoal	+++	++	+	~500	41	3		
		2	Plain	Contam.	Contam.	+	~700	75	Contam.	3,750,000	6.57
			Charcoal	Contam.	Contam.	+	~700	71	Contam.		
		3	Plain	+++	++	+	~1000	~150	11	10,500,000	7.02
			Charcoal	+++	++	+	~1000	~150	21		
		4	Plain	+++	++	+	~300	26	3	1,650,000	6.22
			Charcoal	Contam.	++	+	~500	33	3		
		5	Plain	+++	++	+	~300	35	4	2,600,000	6.41
			Charcoal	+++	++	+	~500	52	4		
	Clofazimine A Days 1-2, 25 mg/kg daily	1	Plain	+++	++	+	~250	28	1	1,400,000	6.15
			Charcoal	+++	++	+	~250	28	1		
		2	Plain	0	++	+	~1000	88	13	6,500,000	6.81
			Charcoal	+++	++	+	~1000	116	10		
		3	Plain	0	++	+	~1000	82	8	4,950,000	6.69
			Charcoal	0	++	+	~1000	99	8		
		4	Plain	Inhib.	++	+	~300	32	3	1,900,000	6.28
			Charcoal	+++	++	+	~300	38	1		
		5	Plain	+++	++	+	~1000	~150	21	10,500,000	7.02
			Charcoal	+++	++	+	~1000	~150	21		
	Clofazimine B Days 1-2, 12.5 mg/kg daily	1	Plain	0	++	+	~500	50	5	2,500,000	6.40
			Charcoal	Contam.	Contam.	Contam.	Contam.	Contam.	Contam.		
		2	Plain	0	++	+	~1000	92	1	4,600,000	6.66
			Charcoal	+++	++	+	~1000	80	5		
		3	Plain	+++	++	+	~1000	120	4	2,000,000	6.30
			Charcoal	+++	++	+	~1000	170	4		
4		Plain	+++	++	+	~350	32	0	2,000,000	6.30	
		Charcoal	+++	++	+	~350	40	1			
5		Plain	+++	++	+	~500	43	1	2,600,000	6.41	
		Charcoal	+++	++	+	~500	52	2			
Clofazimine C Days 1-2, 6.25 mg/kg daily	1	Plain	0	++	+		21	3	1,050,000	6.02	
		Charcoal	+++	++	+		16	1			
	2	Plain	Inhib.	++	+	~300	33	0	2,250,000	6.35	
		Charcoal	+++	++	+	~300	45	0			
	3	Plain	0	++	+	~130	12	0	600,000	5.78	
		Charcoal	0	++	+	~100	9	0			

Table S1. Raw CFU count data from mouse lungs.

Time point	Treatment group	Mouse	Agar plates	Final (4-week) CFU counts for the following 10-fold dilutions: (highlighted cell used to calculate CFU/lung)						CFU/lung	Log ₁₀ CFU/lung	
				0	1	2	3	4	5			
Day 2	Clofazimine C	4	Plain	+++	++	+	~150	21	1	1,050,000	6.02	
			Charcoal	+++	++	+	~150	26	0			
		5	Plain	Inhib.	++	+	~500	~66	8	4,000,000	6.60	
			Charcoal	0	++	+	~500	~61	7			
	Clofazimine D Day 1, 200 mg/kg; Day 2, 100 mg/kg	1	Plain	0	0	+	~2000	~200	9	9,500,000	6.98	
			Charcoal	0	++	+	~1000	~200	19			
		2	Plain	0	++	+	~300	31	4	2,550,000	6.41	
			Charcoal	+++	++	+	~300	51	5			
		3	Plain	0	++	+	~200	16	3	950,000	5.98	
			Charcoal	+++	++	+	~200	19	3			
		4	Plain	0	++	+	~400	39	4	1,950,000	6.29	
			Charcoal	+++	++	+	~350	35	4			
		5	Plain	0	++	+	~500	41	1	3,100,000	6.49	
			Charcoal	+++	++	+	~500	62	4			
		Clofazimine E Day 1, 100 mg/kg; Day 2, 75 mg/kg	1	Plain	0	++	+	~120	12	2	600,000	5.78
				Charcoal		++	+	~120	12	0		
	2		Plain	0	0	++	+	126	8	4,000,000	6.60	
			Charcoal	+++	+++	++	+	150	3			
	3		Plain	0	++	+	~300	62	7	4,400,000	6.64	
			Charcoal	+++	++	+	~300	88	15			
4	Plain		0	++	+	~150	27	1	2,700,000	6.43		
	Charcoal		+++	++	+	~200	54	1				
5	Plain		0	++	+	+	120	0	6,000,000	6.78		
	Charcoal		+++	++	+	~1000	~120	0				
Clofazimine F Day 1, 50 mg/kg; Day 2, 25 mg/kg	1	Plain	0	++	+	~300	37	3	1,850,000	6.27		
		Charcoal	+++	++	+	~300	27	6				
	2	Plain	Inhib.	++	+	~500	42	6	3,250,000	6.51		
		Charcoal	+++	++	+	~500	65	10				
	3	Plain	Inhib.	++	++	~500	Contam.	5	2,050,000	6.31		
		Charcoal	+++	++	+	~500	41	5				
	4	Plain	Inhib.	++	++	~500	51	7	3,600,000	6.56		
		Charcoal	+++	++	+	~500	72	5				
	5	Plain	0	+++	++	+	74	13	3,700,000	6.57		
		Charcoal	+++	++	++	+	~76	7				
Day 7 (Week 1)	Untreated	1	Plain	+++	++	+	~500	41	0	2,200,000	6.34	
			Charcoal	+++	++	+	~500	44	8			
		2	Plain	+++	++	+	~200	28	2	1,400,000	6.15	
			Charcoal	+++	++	+	~200	17	1			
		3	Plain	+++	+++	++	+	92	7	6,000,000	6.78	
			Charcoal	+++	+++	++	+	116	12			
		4	Plain	+++	++	+	~1000	70	5	6,000,000	6.78	
			Charcoal	+++	++	+	~1000	101	12			
		5	Plain	+++	++	+	~250	24	2	2,000,000	6.30	
			Charcoal	+++	++	+	~300	40	5			

Table S1. Raw CFU count data from mouse lungs.

Time point	Treatment group	Mouse	Agar plates	Final (4-week) CFU counts for the following 10-fold dilutions: (highlighted cell used to calculate CFU/lung)						CFU/lung	Log ₁₀ CFU/lung	
				0	1	2	3	4	5			
Day 7 (Week 1)	Clofazimine A Days 1-7, 25 mg/kg daily	1	Plain	0	++	+	~260	28	4	2,100,000	6.32	
			Charcoal	+++	++	+	~260	42	5			
		2	Plain	0	++	+	~100	15	1	850,000	5.93	
			Charcoal	+++	++	+	~150	17	1			
		3	Plain	0	++	+	~250	26	3	2,000,000	6.30	
			Charcoal	+++	++	+	~250	40	1			
		4	Plain	0	+	~1000	84	6	1	500,000	5.70	
			Charcoal	+	+	~1000	~120	10	1			
		5	Plain	Inhib.	++	+	~280	Contam.	9	6,000,000	6.78	
			Charcoal	+++	++	+	~500	Contam.	12			
		Clofazimine B Days 1-7, 12.5 mg/kg daily	1	Plain	0	++	+	~180	22	0	1,100,000	6.04
				Charcoal	Inhib.	++	+	~200	15	0		
	2		Plain	0	++	+	~160	16	0	800,000	5.90	
			Charcoal	Inhib.	++	+	~200	15	6			
	3		Plain	0	++	+	~240	24	1	1,200,000	6.08	
			Charcoal	0	++	+	~200	12	2			
	4		Plain	0	Inhib.	+	~100	10	0	600,000	5.78	
			Charcoal	0	++	+	~100	12	0			
	5		Plain	0	++	+	~200	36	3	1,800,000	6.26	
			Charcoal	+++	++	+	~250	30	5			
	Clofazimine C Days 1-7, 6.25 mg/kg daily		1	Plain	0	++	+	~200	20	1	1,250,000	6.10
				Charcoal	+++	++	+	~200	25	1		
		2	Plain	0	+++	+	~250	26	1	2,050,000	6.31	
			Charcoal	+++	++	+	~300	41	8			
		3	Plain	Inhib.	++	+	~500	40	5	3,150,000	6.50	
			Charcoal	+++	++	+	~500	63	6			
		4	Plain	0	+++	++	+	~150	18	14,500,000	7.16	
			Charcoal	+++	+++	++	+	~200	29			
5		Plain	Inhib.	++	+	~250	21	3	1,200,000	6.08		
		Charcoal	+++	++	+	~250	24	2				
Clofazimine D Day 1, 200 mg/kg; Day 2, 100 mg/kg; Days 3-7, 75 mg/kg daily		1	Plain	0	++	+	~150	22	5	1,600,000	6.20	
			Charcoal	+++	++	+	~200	32	5			
	2	Plain	0	0	+	168	6	0	800,000	5.90		
		Charcoal	+++	++	+	~150	16	0				
	3	Plain	0	Inhib.	+	~100	10	1	500,000	5.70		
		Charcoal	+++	++	+	~100	7	0				
	4	Plain	0	+	~500	45	4	0	400,000	5.60		
		Charcoal	++	+	~1000	80	8	0				
	5	Plain	0	++	+	~100	16	2	900,000	5.95		
		Charcoal	+++	++	Contam.	~150	18	3				
	Clofazimine E Day 1, 100 mg/kg; Day 2, 75 mg/kg; Days 3-7, 50 mg/kg daily	1	Plain	0	Inhib.	+	~500	67	10	5,000,000	6.70	
			Charcoal	+++	++	+	Contam.	~70	7			
2		Plain	0	++	+	110	17	1	850,000	5.93		
		Charcoal	+++	++	+	130	Contam.	3				
3		Plain	0	Inhib.	+	~400	42	1	2,100,000	6.32		
		Charcoal	0	++	+	~400	19	9				

Table S1. Raw CFU count data from mouse lungs.

Time point	Treatment group	Mouse	Agar plates	Final (4-week) CFU counts for the following 10-fold dilutions: (highlighted cell used to calculate CFU/lung)						CFU/lung	Log ₁₀ CFU/lung	
				0	1	2	3	4	5			
Day 14 (Week 2)	Clofazimine C Days 1-14, 6.25 mg/kg daily	1	Plain	Inhib.	++	+	~150	8	0	400,000	5.60	
			Charcoal	+++	Contam.	Contam.	Contam.	Contam.	Contam.			
		2	Plain	Inhib.	Inhib.	+	~100	6	0	300,000	5.48	
			Charcoal	++/+++	Contam.	Contam.	Contam.	Contam.	Contam.			
		3	Plain	Inhib.	Inhib.	+	~150	13	0	650,000	5.81	
			Charcoal	Contam.	Contam.	Contam.	Contam.	Contam.	Contam.			
		4	Plain	Inhib.	+	~260	21	6	0	105,000	5.02	
			Charcoal	++	Contam.	Contam.	Contam.	Contam.	Contam.			
		5	Plain	Inhib.	+ / ++	+	~80	8	1	400,000	5.60	
			Charcoal	++	Contam.	Contam.	Contam.	Contam.	Contam.			
		Clofazimine D Day 1, 200 mg/kg; Day 2, 100 mg/kg; Days 3-14, 75 mg/kg daily	1	Plain	0	0	~1000	44	10	0	220,000	5.34
				Charcoal	++	Contam.	~1000	Contam.	Contam.	Contam.		
	2		Plain	0	0	~200	31	5	1	250,000	5.40	
			Charcoal	++	Contam.	Contam.	Contam.	Contam.	Contam.			
	3		Plain	0	0	52	6	0	0	36,500	4.56	
			Charcoal	0	+	73	3	1	0			
	4		Plain	0	0	Inhib.	~120	18	5	900,000	5.95	
			Charcoal	+++	++	+	~150	15	0			
	5		Plain	0	0	~220	55	4	0	275,000	5.44	
			Charcoal	0	+	~300	39	3	0			
	Clofazimine E Day 1, 100 mg/kg; Day 2, 75 mg/kg; Days 3-14, 50 mg/kg daily		1	Plain	0	0	+	~500	41	3	2,050,000	6.31
				Charcoal	+++	Contam.	Contam.	Contam.	Contam.	Contam.		
		2	Plain	0	Inhib.	+	~130	3	2	450,000	5.65	
			Charcoal	+++	++	+	~150	9	0			
3		Plain	0	++	+	~150	16	0	800,000	5.90		
		Charcoal	+++	Contam.	Contam.	Contam.	Contam.	0				
4		Plain	0	0	~1000	68	12	1	950,000	5.98		
		Charcoal	0	++	+	~150	19	0				
5		Plain	0	0	~200	23	1	0	115,000	5.06		
		Charcoal	++	Contam.	Contam.	Contam.	Contam.	Contam.				
Clofazimine F Day 1, 50 mg/kg; Days 2-14, 25 mg/kg daily		1	Plain	0	+ / ++	+	~100	9	0	450,000	5.65	
			Charcoal	Contam.	Contam.	Contam.	Contam.	Contam.	Contam.			
	2	Plain	0	Inhib.	~250	25	3	0	220,000	5.34		
		Charcoal	++	+	~500	44	3	1				
	3	Plain	0	0	40	6	0	0	30,000	4.48		
		Charcoal	++	Contam.	Contam.	Contam.	Contam.	Contam.				
	4	Plain	0	Inhib.	+	~200	25	3	1,250,000	6.10		
		Charcoal	+++	++	Contam.	Contam.	Contam.	Contam.				
	5	Plain	0	Inhib.	~400	58	0	0	315,000	5.50		
		Charcoal	++	+	~400	63	Contam.	Contam.				
	Day 28 (Week 4)	Untreated	1	Plain	0	++	~800	139	18	0	1,200,000	6.08
				Charcoal	Contam.	Contam.	Contam.	Contam.	24	0		
2			Plain	Inhib.	+	~800	89	4	0	550,000	5.74	
			Charcoal	Contam.	+	~1000	142	11	0			
3			Plain	Inhib.	+	~500	62	1	0	800,000	5.90	
			Charcoal	Contam.	Contam.	Contam.	Contam.	16	0			

Table S1. Raw CFU count data from mouse lungs.

Time point	Treatment group	Mouse	Agar plates	Final (4-week) CFU counts for the following 10-fold dilutions: (highlighted cell used to calculate CFU/lung)						CFU/lung	Log ₁₀ CFU/lung	
				0	1	2	3	4	5			
Day 28 (Week 4)	Untreated	4	Plain	Inhib.	+	~1000	122	14	0	800,000	5.90	
			Charcoal	Contam.	Contam.	Contam.	Contam.	16	1			
		5	Plain	Inhib.	Inhib.	+	~500	62	9	3,100,000	6.49	
			Charcoal	Contam.	Contam.	Contam.	Contam.	61	9			
	Clofazimine A Day 1 - Week 4, 25 mg/kg daily	1	Plain	0	Inhib.	96	6	0	0	65,000	4.81	
			Charcoal	+	~1000	112	13	0	0			
		2	Plain	0	Inhib.	25	0	0	0	15,500	4.19	
			Charcoal	0	~300	31	2	1	0			
		3	Plain	0	Inhib.	129	15	0	0	115,000	5.06	
			Charcoal	0	+	166	23	0	0			
		4	Plain	0	Inhib.	~600	54	3	0	375,000	5.57	
			Charcoal	++	+	~1000	75	8	0			
		5	Plain	0	Inhib.	6	0	0	0	4,000	3.60	
			Charcoal	0	Inhib.	8	0	0	0			
		Clofazimine B Day 1 - Week 4, 12.5 mg/kg daily	1	Plain	0	Inhib.	~1000	116	4	1	900,000	5.95
				Charcoal	+ / ++	+	~1000	~200	18	1		
	2		Plain	0	Inhib.	8	0	0	0	7,500	3.88	
			Charcoal	0	~160	15	0	0	0			
	3		Plain	Inhib.	~350	130	11	1	0	55,000	4.74	
			Charcoal	Contam.	Contam.	Contam.	Contam.	Contam.	0			
	4		Plain	0	Inhib.	130	11	1	0	55,000	4.74	
			Charcoal	Contam.	Contam.	Contam.	Contam.	Contam.	0			
	5		Plain	0	~500	119	21	3	0	175,000	5.24	
			Charcoal	0	+	~200	35	2	0			
	Clofazimine C Day 1 - Week 4, 6.25 mg/kg daily	1	Plain	0	Inhib.	89	7	0	0	35,000	4.54	
			Charcoal	+	~800	~120	5	0	0			
		2	Plain	Inhib.	~1000	116	3	0	0	45,000	4.65	
			Charcoal	Contam.	Contam.	Contam.	9	0	0			
3		Plain	0	+	147	13	0	0	65,000	4.81		
		Charcoal	Contam.	+	~200	10	0	0				
4		Plain	0	Inhib.	45	3	0	0	15,000	4.18		
		Charcoal	Contam.	Contam.	Contam.	Contam.	0	0				
5		Plain	0	Inhib.	~350	14	1	1	70,000	4.85		
		Charcoal	Contam.	Contam.	Contam.	Contam.	Contam.	0				
Clofazimine D Day 1, 200 mg/kg; Day 2, 100 mg/kg; Days 3-14, 75 mg/kg daily; Weeks 2-4, 25 mg/kg 3x/week	1	Plain	0	0	90	3	0	0	65,000	4.81		
		Charcoal	+	~500	~150	13	0	0				
	2	Plain	0	0	40	1	1	0	46,500	4.67		
		Charcoal	0	~300	93	1	0	0				
	3	Plain	0	Inhib.	153	6	0	0	145,000	5.16		
		Charcoal	++	+	~250	29	4	0				
	4	Plain	0	0	12	1	0	0	17,000	4.23		
		Charcoal	~500	~300	34	4	0	0				
	5	Plain	0	Inhib.	~300	29	1	0	465,000	5.67		
		Charcoal	0	+	~800	93	8	2				

Table S1. Raw CFU count data from mouse lungs.

Time point	Treatment group	Mouse	Agar plates	Final (4-week) CFU counts for the following 10-fold dilutions: (highlighted cell used to calculate CFU/lung)						CFU/lung	Log ₁₀ CFU/lung
				0	1	2	3	4	5		
Day 28 (Week 4)	Clofazimine E Day 1, 100 mg/kg; Day 2, 75 mg/kg; Days 3-14, 50 mg/kg daily; Weeks 2-4, 25 mg/kg 3x/week	1	Plain	0	Inhib.	25	2	0	0	22,500	4.35
			Charcoal	+	~500	45	3	0	0		
		2	Plain	0	Inhib.	132	9	0	0	90,000	4.95
			Charcoal	++	+	~200	18	4	0		
		3	Plain	0	103	33	2	0	0	36,000	4.56
			Charcoal	+	~350	72	4	0	0		
		4	Plain	0	34	29	1	0	0	15,000	4.18
			Charcoal	+	~250	30	Contam.	0	0		
		5	Plain	0	Inhib.	41	4	0	0	28,000	4.45
			Charcoal	+	~500	56	6	0	0		
	Clofazimine F Day 1, 50 mg/kg; Days 2-14, 25 mg/kg daily; Weeks 2-4, 25 mg/kg 3x/week	1	Plain	0	~200	45	2	0	0	35,000	4.54
			Charcoal	+	~350	70	1	0	0		
		2	Plain	0	Inhib.	17	0	0	0	13,000	4.11
			Charcoal	~1000	144	26	1	0	0		
		3	Plain	0	Inhib.	26	1	0	0	18,500	4.27
			Charcoal	0	167	37	2	0	0		
		4	Plain	0	~800	~300	13	0	0	145,000	5.16
			Charcoal	++	+	~350	29	1	0		
5		Plain	0	Inhib.	83	4	0	0	43,000	4.63	
		Charcoal	+	~500	86	8	0	0			
Day 56 (Week 8)	Untreated	1	Plain	+++	++	+	~700	70	5	4,750,000	6.68
			Charcoal	++	++	+	~1000	95	5		
		2	Plain	0	+	~1000	75	9	0	450,000	5.65
			Charcoal	Contam.	+	~1000	~100	7	0		
		3	Plain	+++	++	+	~400	40	0	2,500,000	6.40
			Charcoal	+++	++	+	~400	50	2		
		4	Plain	+++	++	+	~800	80	6	4,000,000	6.60
			Charcoal	+++	++	+	~700	75	7		
		5	Plain	+++	++	+	100	5	0	500,000	5.70
			Charcoal	+++	++	+	~100	10	0		
	Clofazimine A Day 1 - Week 8, 25 mg/kg daily	1	Plain	0	7	6	0	0	0	2,300	3.36
			Charcoal	~101	46	4	0	0	0		
		2	Plain	0	20	29	0	0	0	22,000	4.34
			Charcoal	+	~300	44	2	0	0		
		3	Plain	0	~20	~150	20	0	0	100,000	5.00
			Charcoal	++	+	~150	15	0	0		
		4	Plain	0	0	0	0	0	0	500	2.70
			Charcoal	41	Contam.	1	1	0	0		
		5	Plain	0	0	20	0	0	0	13,500	4.13
			Charcoal	+	~135	27	1	0	0		
	Clofazimine B Day 1 - Week 8, 12.5 mg/kg daily	1	Plain	0	4	1	0	0	0	950	2.98
			Charcoal	94	19	1	0	0	0		
		2	Plain	0	53	9	1	0	0	11,000	4.04
			Charcoal	~1000	~100	22	1	0	0		
3		Plain	0	+	~100	9	0	0	140,000	5.15	
		Charcoal	++	+	Contam.	28	2	0			

Table S1. Raw CFU count data from mouse lungs.

Time point	Treatment group	Mouse	Agar plates	Final (4-week) CFU counts for the following 10-fold dilutions: (highlighted cell used to calculate CFU/lung)						CFU/lung	Log ₁₀ CFU/lung	
				0	1	2	3	4	5			
Day 56 (Week 8)	Clofazimine B	4	Plain	0	~130	33	1	0	0	25,000	4.40	
			Charcoal	+	~200	50	2	0	0			
		5	Plain	0	2	0	0	0	0	100	2.00	
			Charcoal	4	1	0	0	0	0			
	Clofazimine C Day 1 - Week 8, 6.25 mg/kg daily	1	Plain	0	20	3	0	0	0	1,700	3.23	
			Charcoal	Contam.	34	4	0	0	0			
		2	Plain	0	~1000	46	1	1	0	45,500	4.66	
			Charcoal	+	~1000	91	3	0	0			
		3	Plain	0	~500	55	3	0	0	37,500	4.57	
			Charcoal	+	~100	75	5	0	0			
		4	Plain	0	~100	20	3	0	0	17,500	4.24	
			Charcoal	+	~350	35	2	0	0			
		5	Plain	++	+	~500	23	2	0	270,000	5.43	
			Charcoal	++	+	~500	54	5	0			
		Clofazimine D Day 1, 200 mg/kg; Day 2, 100 mg/kg; Days 3-14, 75 mg/kg daily; Weeks 2-8, 25 mg/kg 3x/week	1	Plain	0	8	2	0	0	0	1,000	3.00
				Charcoal	0	Contam.	2	0	0	0		
	2		Plain	0	2	0	0	0	0	100	2.00	
			Charcoal	22	1	0	0	0	0			
	3		Plain	0	1	6	0	0	0	8,000	3.90	
			Charcoal	+	99	16	0	0	0			
	4		Plain	0	26	7	0	0	0	5,500	3.74	
			Charcoal	+	77	11	0	0	0			
	5		Plain	0	52	10	0	0	0	9,000	3.95	
			Charcoal	+	~120	18	3	0	0			
Clofazimine E Day 1, 100 mg/kg; Day 2, 75 mg/kg; Days 3-14, 50 mg/kg daily; Weeks 2-8, 25 mg/kg 3x/week	1	Plain	0	56	26	0	0	0	21,500	4.33		
		Charcoal	+	~500	43	0	0	0				
	2	Plain	0	45	12	1	0	0	12,000	4.08		
		Charcoal	+	~250	24	0	0	0				
	3	Plain	0	134	48	0	0	0	49,000	4.69		
		Charcoal	++	+	98	3	0	0				
	4	Plain	0	~100	34	2	0	0	22,000	4.34		
		Charcoal	+	~400	44	0	0	0				
	5	Plain	0	26	5	0	0	0	6,500	3.81		
		Charcoal	+	~180	13	0	0	0				
Clofazimine F Day 1, 50 mg/kg; Days 2-14, 25 mg/kg daily; Weeks 2-8, 25 mg/kg 3x/week	1	Plain	0	55	15	0	0	0	19,000	4.28		
		Charcoal	0	~300	38	1	0	0				
	2	Plain	0	55	10	1	0	0	11,500	4.06		
		Charcoal	~500	~200	23	1	0	0				
	3	Plain	0	2	1	0	0	0	1,450	3.16		
		Charcoal	84	29	2	0	0	0				
	4	Plain	0	10	10	0	0	0	5,000	3.70		
		Charcoal	172	43	6	1	0	0				
	5	Plain	0	~500	52	5	1	0	50,000	4.70		
		Charcoal	+	~1000	~62	10	0	0				
Day 84 (Week 12)	Untreated	1	Plain	Inhib.	+++	+	~160	15	3	750,000	5.88	
			Charcoal	Inhib.	+++	+	~150	14	3			

Table S1. Raw CFU count data from mouse lungs.

Time point	Treatment group	Mouse	Agar plates	Final (4-week) CFU counts for the following 10-fold dilutions: (highlighted cell used to calculate CFU/lung)						CFU/lung	Log ₁₀ CFU/lung
				0	1	2	3	4	5		
Day 84 (Week 12)	Untreated	2	Plain	+++	+++	+ / ++	~300	37	3	2,400,000	6.38
			Charcoal	+++	+++	+ / ++	~400	48	6		
		3	Plain	Inhib.	++ / +++	++	~130	22	0	1,100,000	6.04
			Charcoal	+++	++ / +++	+ / ++	~143	21	2		
		4	Plain	Inhib.	++ / +++	+ / ++	~119	5	0	800,000	5.90
			Charcoal	+++	++ / +++	+ / ++	~205	16	1		
		5	Plain	+++	+++	++ / +++	+	53	5	4,150,000	6.62
			Charcoal	+++	+++	++ / +++	+	83	9		
	Clofazimine A Day 1 - Week 12, 25 mg/kg daily	1	Plain	0	0	0	0	0	0	0	0.00
			Charcoal	0	0	0	0	0	0		
		2	Plain	0	1	1	0	0	0	2,300	3.36
			Charcoal	Inhib.	46	4	0	0	0		
		3	Plain	0	0	0	0	0	0	650	2.81
			Charcoal	Inhib.	13	1	0	0	0		
		4	Plain	0	0	2	0	0	0	4,750	3.68
			Charcoal	Inhib.	95	6	0	0	0		
5		Plain	Inhib.	7	1	2	0	0	2,750	3.44	
		Charcoal	0	55	5	2	0	0			0
Clofazimine B Day 1 - Week 12, 12.5 mg/kg daily	1	Plain	0	3	1	0	0	0	300	2.48	
		Charcoal	Inhib.	6	0	0	0	0			0
	2	Plain	0	0	5	0	0	0	2,500	3.40	
		Charcoal	Contam.	Contam.	Contam.	1	0	0			0
	3	Plain	Inhib.	~146	18	2	0	0	12,000	4.08	
		Charcoal	+	~122	24	1	0	0			0
	4	Plain	0	15	2	0	0	0	1,400	3.15	
		Charcoal	Contam.	28	3	0	0	0			0
	5	Plain	0	21	2	0	0	0	1,050	3.02	
		Charcoal	Inhib.	21	3	0	0	0			0
Clofazimine C Day 1 - Week 12, 6.25 mg/kg daily	1	Plain	0	6	1	0	0	0	300	2.48	
		Charcoal	~50	5	0	0	0	0			0
	2	Plain	0	5	0	0	0	0	600	2.78	
		Charcoal	~250	12	1	0	0	0			0
	3	Plain	Inhib.	35	5	0	0	0	1,750	3.24	
		Charcoal	~500	31	4	0	1	0			0
	4	Plain	0	7	3	0	0	0	500	2.70	
		Charcoal	~65	10	3	0	0	0			0
	5	Plain	Inhib.	+	24	1	0	0	14,500	4.16	
		Charcoal	+	+	29	0	0	0			0
Clofazimine D Day 1, 200 mg/kg; Day 2, 100 mg/kg; Days 3-14, 75 mg/kg daily; Weeks 2-12, 25 mg/kg 3x/week	1	Plain	0	0	40	5	0	0	39,500	4.60	
		Charcoal	+	+	79	10	0	0			0
	2	Plain	0	29	13	3	0	0	15,000	4.18	
		Charcoal	+	~208	30	1	0	0			0
	3	Plain	0	11	5	0	0	0	6,500	3.81	
		Charcoal	+	96	13	2	0	0			0
	4	Plain	0	12	3	1	0	0	4,500	3.65	
		Charcoal	+	38	9	0	0	0			0

Table S1. Raw CFU count data from mouse lungs.

Time point	Treatment group	Mouse	Agar plates	Final (4-week) CFU counts for the following 10-fold dilutions: (highlighted cell used to calculate CFU/lung)						CFU/lung	Log ₁₀ CFU/lung
				0	1	2	3	4	5		
Day 84 (Week 12)	Clofazimine D	5	Plain	0	3	1	0	0	0	500	2.70
			Charcoal	44	10	0	0	0	0		
	Clofazimine E Day 1, 100 mg/kg; Day 2, 75 mg/kg; Days 3-14, 50 mg/kg daily; Weeks 2-12, 25 mg/kg 3x/week	1	Plain	0	~36	13	1	0	0	6,500	3.81
			Charcoal	Contam.	~100	11	0	0	0		
		2	Plain	0	22	16	1	0	0	12,000	4.08
			Charcoal	+	~300	24	0	0	0		
		3	Plain	0	0	0	0	0	0	150	2.18
			Charcoal	Contam.	3	0	0	0	0		
		4	Plain	0	21	4	0	0	0	3,800	3.58
			Charcoal	+	76	5	0	0	0		
		5	Plain	0	11	2	0	0	0	1,100	3.04
			Charcoal	Contam.	22	1	0	0	0		
	Clofazimine F Day 1, 50 mg/kg; Days 2-14, 25 mg/kg daily; Weeks 2-12, 25 mg/kg 3x/week	1	Plain	0	132	28	3	0	0	14,000	4.15
			Charcoal	+	181	23	1	1	0		
		2	Plain	0	1	2	0	0	0	1,000	3.00
			Charcoal	Inhib.	8	1	0	0	0		
		3	Plain	0	2	2	0	0	0	700	2.85
			Charcoal	Inhib.	14	0	0	0	0		
		4	Plain	0	40	7	0	0	0	5,000	3.70
			Charcoal	+	79	10	0	0	0		
5		Plain	0	0	1	0	0	0	750	2.88	
		Charcoal	Inhib.	15	0	0	0	0			

¹For plain plates, the neat (10⁰ "dilution") CFU counts represent the average of 3 plates.

²For plain plates, the neat CFU counts represent the average of 2 plates.

+++ indicates uniform confluent growth.

++ indicates non-uniform confluent growth.

+ indicates individual colonies too numerous to accurately count or estimate.

~ indicates that an accurate CFU count could not be obtained due to some merged/touching colonies.

Blank cell, data not available.

Contam., contamination.

Inhib., visible growth inhibition.

Table S2. Raw CFU count data from mouse spleens.

Time point	Treatment group	Mouse	Agar plates	Final (4-week) CFU counts for the following 10-fold dilutions: (highlighted cell used to calculate CFU/spleen)						CFU/spleen	Log ₁₀ CFU/spleen		
				0	1	2	3	4	5				
Day 0	Pre-treatment (run 1)	1	Plain	+	~500	33	3	0	0	23,500	4.37		
			Charcoal	+	~500	47	0	0	0				
		2	Plain	+	~800	75	5	0	0			43,000	4.63
			Charcoal	+	~800	86	6	0	0				
		3	Plain	+	~1500	147	20	0	0			100,000	5.00
			Charcoal	+	~1500	~150	11	0	0				
	Pre-treatment (run 2)	4	Plain	+	~500	37	2	0	0	27,000	4.43		
			Charcoal	+	~500	54	3	0	0				
		5	Plain	+	~1000	~150	15	2	0	75,000	4.88		
			Charcoal	+	~1000	~150	9	2	0				
		6	Plain	+	~500	64	7	0	0	32,000	4.51		
			Charcoal	+	~500		4	0	0				
	Pre-treatment (run 3)	7	Plain	+	~1000	~100	7	0	0	65,000	4.81		
			Charcoal	+	~1000	~150	13	0	0				
		8	Plain	+	~1000	~100	9	0	0	50,000	4.70		
Charcoal			+	~1000	~100	10	0	0					
9		Plain	+	~500	55	0	0	0	37,000	4.57			
		Charcoal	+	~800	74	0	0	0					
Day 1	Untreated	1	Plain	+	~500	21	5	1	0	21,000	4.32		
			Charcoal	+	~500	42	0	0	0				
		2	Plain	+	~1000	55	8	0	0	27,500	4.44		
			Charcoal	+	~1000	95	3	1	0				
		3	Plain	+	~800	~80	10	1	0	55,000	4.74		
			Charcoal	+	~800	~80	11	0	0				
		4	Plain	+/++	+		22	2	0	110,000	5.04		
			Charcoal	+/++	+	Contam.	20	4	Contam.				
		5	Plain	+/++	+	51	6	0	0	32,000	4.51		
			Charcoal	+/++	+	64	9	2	0				
	Clofazimine A Day 1, 25 mg/kg	1	Plain	+/++	+	75	8	2	0	40,000	4.60		
			Charcoal	+/++	+	80	7	Contam.	0				
		2	Plain	+/++	+	43	4	1	0	31,000	4.49		
			Charcoal	+/++	+	62	5	1	0				
		3	Plain	+/++	+	29	5	1	0	28,000	4.45		
			Charcoal	+/++	+	56	4	2	0				
		4	Plain	+	131	7	2	0	0	5,500	3.74		
			Charcoal	+	~120	11	1	0	0				
		5	Plain	+	~250	22	5	0	0	16,500	4.22		
			Charcoal	+	~250	33	3	0	0				
	Clofazimine B Day 1, 12.5 mg/kg	1	Plain	+/++	+	57	10	0	0	42,000	4.62		
			Charcoal	+/++	+	84	6	0	0				
		2	Plain	+/++	+	72	5	0	0	65,000	4.81		
			Charcoal	+/++	+	120	13	0	0				
		3	Plain	++	Contam.	~200	38	2	0	190,000	5.28		
			Charcoal	++	Contam.	~200	28	0	0				
		4	Plain	+/++	+	~200	22	0	0	110,000	5.04		
Charcoal			+/++	+		0	3	0					

Table S2. Raw CFU count data from mouse spleens.

Time point	Treatment group	Mouse	Agar plates	Final (4-week) CFU counts for the following 10-fold dilutions: (highlighted cell used to calculate CFU/spleen)						CFU/spleen	Log ₁₀ CFU/spleen	
				0	1	2	3	4	5			
Day 1	Clofazimine B	5	Plain	+ / ++	+	46	8	Contam.	0	43,000	4.63	
			Charcoal	+ / ++	+	86	9	0	0			
	Clofazimine C Day 1, 6.25 mg/kg	1	Plain	+ / ++	+	~70	11	0	0	55,000	4.74	
			Charcoal	+ / ++	+	~100	Contam.	2	0			
		2	Plain	+ / ++	+	57	6	2	0	28,500	4.45	
			Charcoal	+ / ++	+	Contam.	7	2	0			
		3	Plain	+ / ++	+	~75	6	1	0	30,000	4.48	
			Charcoal	+ / ++	+	~85	0	0	0			
		4	Plain	+	~200	18	6	0	0	12,500	4.10	
			Charcoal	+	~200	25	4	2	0			
		5	Plain	+	+	0	6	0	0	30,000	4.48	
			Charcoal	+	+	Contam.	6	0	0			
		Clofazimine D Day 1, 200 mg/kg	1	Plain	+	~250	75	3	0	0	42,000	4.62
				Charcoal	+	~300	84	11	2	0		
	2		Plain	+	~150	20	1	0	0	14,000	4.15	
			Charcoal	+	~200	28	1	1	0			
	3		Plain	0	~400	51	13	1	0	27,000	4.43	
			Charcoal	0	~400	54	5	1	0			
	4		Plain	+	~200	35	3	0	1	32,000	4.51	
			Charcoal	+	~250	64	5	1	0			
	5		Plain	+	~250	43	1	0	0	41,500	4.62	
			Charcoal	+	~300	83	6	1	0			
	Clofazimine E Day 1, 100 mg/kg		1	Plain	+	+	15	1	0	0	14,500	4.16
				Charcoal	+	+	29	1	1	0		
		2	Plain	+	+	23	0	0	0	20,500	4.31	
			Charcoal	+	+	41	0	0	0			
		3	Plain	Contam.	+	27	1	0	0	14,500	4.16	
			Charcoal	Contam.	+	29	Contam.	0	0			
		4	Plain	+	~300	39	5	0	0	35,500	4.55	
			Charcoal	+	~350	71	6	0	0			
5		Plain	+ / ++	~350	36	3	0	0	31,500	4.50		
		Charcoal	+ / ++	~400	63	5	0	0				
Clofazimine F Day 1, 50 mg/kg		1	Plain	+	~150	34	2	0	0	23,000	4.36	
			Charcoal	+	~200	46	3	Contam.	0			
	2	Plain	+	~150	17	0	0	0	16,500	4.22		
		Charcoal	+	~200	33	3	0	0				
	3	Plain	+ / ++	+	55	5	0	0	30,000	4.48		
		Charcoal	+ / ++	+	~60	6	0	0				
	4	Plain	+ / ++	+	50	6	0	0	29,500	4.47		
		Charcoal	+ / ++	+	59	3	0	0				
	5	Plain	+ / ++	+	~60	8	1	0	50,000	4.70		
		Charcoal	+ / ++	+	~75	10	2	0				
	Day 2	Untreated	1	Plain	++	+	~150	11	0	0	100,000	5.00
				Charcoal	++	+	~150	20	0	0		
2			Plain	Contam.	+	~125	11	2	0	170,000	5.23	
			Charcoal	Contam.	+	~300	34	2	0			

Table S2. Raw CFU count data from mouse spleens.

Time point	Treatment group	Mouse	Agar plates	Final (4-week) CFU counts for the following 10-fold dilutions: (highlighted cell used to calculate CFU/spleen)						CFU/spleen	Log ₁₀ CFU/spleen	
				0	1	2	3	4	5			
Day 2	Untreated	3	Plain	+	Contam.	~150	8	1	0	95,000	4.98	
			Charcoal	+	Contam.	~200	19	1	0			
		4	Plain	+	~500	36	3	0	0	30,000	4.48	
			Charcoal	+	~500	~60	6	0	0			
		5	Plain	+	~500	26	5	0	0	18,500	4.27	
			Charcoal	+	~300	37	6	0	0			
	Clofazimine A Days 1-2, 25 mg/kg daily	1	Plain	+	~500	23	5	0	0	25,000	4.40	
			Charcoal	+	~500	50	7	2	0			
		2	Plain	+	~500	35	0	0	0	26,000	4.41	
			Charcoal	+	~500	52	0	0	0			
		3	Plain	+	~200	25	6	0	0	20,000	4.30	
			Charcoal	+	~360	40	4	1	0			
		4	Plain	+	~500	50	1	0	0	33,500	4.53	
			Charcoal	+	~500	67	5	0	0			
		5	Plain	+	~500	62	9	1	0	46,500	4.67	
			Charcoal	+	~500	93	11	2	0			
		Clofazimine B Days 1-2, 12.5 mg/kg daily	1	Plain	+	~500	46	1	1	0	27,000	4.43
				Charcoal	+	~500	54	8	0	0		
	2		Plain	+	~1000	65	7	0	0	47,500	4.68	
			Charcoal	+	~1000	95	14	0	0			
	3		Plain	++	+	65	6	0	0	78,000	4.89	
			Charcoal	++	+	156	Contam.	0	0			
	4		Plain	+	~1000	93	4	0	0	46,500	4.67	
			Charcoal	+	~1000	88	18	0	0			
	5		Plain	+	~300	31	1	0	0	30,000	4.48	
			Charcoal	+	~300	60	3	0	0			
	Clofazimine C Days 1-2, 6.25 mg/kg daily	1	Plain	+	~250	27	0	0	0	19,000	4.28	
			Charcoal	+	~250	38	0	0	0			
2		Plain	Contam.	~200	21	2	0	0	10,500	4.02		
		Charcoal	Contam.	~200	21	2	0	0				
3		Plain	+	~250	28	0	0	0	22,000	4.34		
		Charcoal	+	~300	44	3	0	0				
4		Plain	+	~150	19	5	0	0	19,500	4.29		
		Charcoal	+	~150	39	5	0	0				
5		Plain	+	~500	46	4	1	0	24,500	4.39		
		Charcoal	+	~500	49	5	0	0				
Clofazimine D Day 1, 200 mg/kg; Day 2, 100 mg/kg	1	Plain	0	Inhib.	11	1	0	0	5,500	3.74		
		Charcoal	0	~100	11	1	0	0				
	2	Plain	++	+	~100	8	2	0	80,000	4.90		
		Charcoal	++	+	~100	16	2	0				
	3	Plain	+	~100	8	0	0	0	15,000	4.18		
		Charcoal	+	~200	30	0	0	0				
	4	Plain	0	~500	33	1	0	0	30,500	4.48		
		Charcoal	+	~500	61	4	2	0				
	5	Plain	+	~500	25	2	0	0	18,000	4.26		
		Charcoal	+	~500	36	7	0	0				

Table S2. Raw CFU count data from mouse spleens.

Time point	Treatment group	Mouse	Agar plates	Final (4-week) CFU counts for the following 10-fold dilutions: (highlighted cell used to calculate CFU/spleen)						CFU/spleen	Log ₁₀ CFU/spleen
				0	1	2	3	4	5		
Day 2	Clofazimine E Day 1, 100 mg/kg; Day 2, 75 mg/kg	1	Plain	+	~200	27	2	0	0	29,500	4.47
			Charcoal	+	~200	59	2	0	0		
		2	Plain	0	+	~100	8	0	0	55,000	4.74
			Charcoal	++	+	~150	11	0	0		
		3	Plain	0	~500	46	7	1	0	35,000	4.54
			Charcoal	Inhib.	~500	70	7	1	0		
		4	Plain	0	96	8	0	0	0	14,000	4.15
			Charcoal	Inhib.	~200	28	2	0	0		
		5	Plain	+	~250	33	5	2	0	35,500	4.55
			Charcoal	+	~500	71	8	1	0		
	Clofazimine F Day 1, 50 mg/kg; Day 2, 25 mg/kg	1	Plain	+	~500	55	4	1	0	31,000	4.49
			Charcoal	+	~500	62	6	1	0		
		2	Plain	++	+	95	13	2	0	115,000	5.06
			Charcoal	++	+	~100	23	0	0		
		3	Plain	+	~500	29	0	0	0	24,000	4.38
			Charcoal	+	~500	48	2	0	0		
		4	Plain	Inhib.	+	36	5	0	0	18,000	4.26
			Charcoal	++	+	25	7	0	0		
5		Plain	++	+	~100	16	0	0	125,000	5.10	
		Charcoal	++	+	~100	25	0	0			
Day 7 (Week 1)	Untreated	1	Plain	+	~500	47	2	0	0	32,000	4.51
			Charcoal	+	~500	64	4	0	0		
		2	Plain	+	~500	53	4	0	0	26,500	4.42
			Charcoal	+	~500	39	7	0	0		
		3	Plain	+	~500	26	3	0	0	23,000	4.36
			Charcoal	+	~500	46	0	0	0		
		4	Plain	++	+	~500	46	4	0	300,000	5.48
			Charcoal	++	+	~500	60	6	0		
		5	Plain	+	~500	43	3	0	0	27,500	4.44
			Charcoal	+	~500	55	7	0	0		
	Clofazimine A Days 1-7, 25 mg/kg daily	1	Plain	+	~150	31	2	0	0	15,500	4.19
			Charcoal	+	~200	16	5	0	0		
		2	Plain	+	~120	23	2	0	0	13,000	4.11
			Charcoal	+	~250	26	3	0	0		
		3	Plain	0	~500	42	5	0	0	44,000	4.64
			Charcoal	Inhib.	~1000	88	8	0	0		
		4	Plain	~100	27	2	0	0	0	3,000	3.48
			Charcoal	~500	45	6	0	0	0		
		5	Plain	Inhib.	90	13	0	0	0	6,500	3.81
			Charcoal	~1000	~100	10	0	0	0		
	Clofazimine B Days 1-7, 12.5 mg/kg daily	1	Plain	~1000	150	15	0	0	0	10,500	4.02
			Charcoal	~1000	~200	21	3	0	0		
		2	Plain	Inhib.	74	9	0	0	0	8,500	3.93
			Charcoal	~1000	~150	17	1	0	0		
3		Plain	0	98	8	1	0	0	9,000	3.95	
		Charcoal	0	75	18	2	0	0			

Table S2. Raw CFU count data from mouse spleens.

Time point	Treatment group	Mouse	Agar plates	Final (4-week) CFU counts for the following 10-fold dilutions: (highlighted cell used to calculate CFU/spleen)						CFU/spleen	Log ₁₀ CFU/spleen	
				0	1	2	3	4	5			
Day 7 (Week 1)	Clofazimine B	4	Plain	~1000	83	16	2	0	0	8,500	3.93	
			Charcoal	~2000	~150	17	1	0	0			
		5	Plain	Inhib.	51	3	0	0	0	3,500	3.54	
			Charcoal	~1000	63	7	0	0	0			
	Clofazimine C Days 1-7, 6.25 mg/kg daily	1	Plain	~1000	102	9	0	0	0	9,500	3.98	
			Charcoal	~1000	~250	19	1	0	0			
		2	Plain	+	~260	~20	4	0	0	20,000	4.30	
			Charcoal	+	~300	Contam.	4	1	0			
		3	Plain	+	~500	45	6	0	0	35,500	4.55	
			Charcoal	+	~500	71	9	1	0			
		4	Plain	++	+	~150	20	2	0	130,000	5.11	
			Charcoal	++	+	~200	26	1	0			
		5	Plain	~1000	95	10	2	0	0	7,500	3.88	
			Charcoal	~1000	~200	15	2	0	0			
		Clofazimine D Day 1, 200 mg/kg; Day 2, 100 mg/kg; Days 3-7, 75 mg/kg daily	1	Plain	Inhib.	~150	15	0	0	0	15,500	4.19
				Charcoal	+	~150	31	0	0	0		
	2		Plain	0	29	4	0	0	0	3,000	3.48	
			Charcoal	~500	64	6	0	0	0			
	3		Plain	0	~200	22	2	0	0	12,000	4.08	
			Charcoal	+	~250	24	1	0	0			
	4		Plain	0	24	2	2	0	0	3,000	3.48	
			Charcoal	0	45	6	0	0	0			
	5		Plain	~100	~100	15	2	0	0	7,500	3.88	
			Charcoal	+	Contam.	Contam.	0	0	0			
Clofazimine E Day 1, 100 mg/kg; Day 2, 75 mg/kg; Days 3-7, 50 mg/kg daily	1	Plain	0	60	12	1	0	0	7,000	3.85		
		Charcoal	~1000	~140	14	2	0	0				
	2	Plain	0	66	4	1	0	0	8,500	3.93		
		Charcoal	~1000	88	17	2	0	0				
	3	Plain	0	~160	35	5	0	0	17,500	4.24		
		Charcoal	+	~200	28	4	0	0				
	4	Plain	0	~100	16	0	0	0	8,000	3.90		
		Charcoal	~1000	~100	7	2	0	0				
	5	Plain	~1000	~200	23	5	0	0	17,000	4.23		
		Charcoal	+	~200	34	2	0	0				
Clofazimine F Day 1, 50 mg/kg; Days 2-7, 25 mg/kg daily	1	Plain	Inhib.	Inhib.	12	1	0	0	15,500	4.19		
		Charcoal	+	~250	31	Contam.	Contam.	Contam.				
	2	Plain	Inhib.	Inhib.	19	1	0	0	9,500	3.98		
		Charcoal	Inhib.	Contam.	Contam.	Contam.	Contam.	Contam.				
	3	Plain	Inhib.	82	4	1	0	0	5,400	3.73		
		Charcoal	Inhib.	108	Contam.	Contam.	Contam.	Contam.				
	4	Plain	Inhib.	Inhib.	3	0	0	0	6,350	3.80		
		Charcoal	Inhib.	127	Contam.	Contam.	0	Contam.				
	5	Plain	Inhib.	128	9	4	0	0	7,500	3.88		
		Charcoal	Inhib.	Inhib.	15	5	Contam.	0				
Day 14 (Week 2)	Untreated	1	Plain	+	181	21	3	0	0	17,500	4.24	
			Charcoal	++	~420	35	2	2	0			

Table S2. Raw CFU count data from mouse spleens.

Time point	Treatment group	Mouse	Agar plates	Final (4-week) CFU counts for the following 10-fold dilutions: (highlighted cell used to calculate CFU/spleen)						CFU/spleen	Log ₁₀ CFU/spleen	
				0	1	2	3	4	5			
Day 14 (Week 2)	Untreated	2	Plain	++	+	21	0	1	0	10,500	4.02	
			Charcoal	++	+	19	4	0	0			
		3	Plain	++	~500	23	0	0	0	22,500	4.35	
			Charcoal	+	~450	45	1	0	0			
		4	Plain	++	+	~1000	23	3	0	135,000	5.13	
			Charcoal	+++	+	~1000	27	3	0			
		5	Plain	+	~400	63	6	0	0	39,000	4.59	
			Charcoal	+	~1000	78	5	1	0			
		Clofazimine A Days 1-14, 25 mg/kg daily	1	Plain	+	33	1	0	0	0	1,650	3.22
				Charcoal	Contam.	Contam.	0	0	0	0		
	2		Plain	Inhib.	89	Contam.	Contam.	0	0	4,450	3.65	
			Charcoal	Contam.	Contam.	Contam.	Contam.	Contam.	Contam.			
	3		Plain	Inhib.	108	8	1	0	0	4,000	3.60	
			Charcoal	Contam.	Contam.	Contam.	Contam.	Contam.	Contam.			
	4		Plain	Inhib.	55	6	1	0	0	3,000	3.48	
			Charcoal	Contam.	Contam.	Contam.	Contam.	Contam.	Contam.			
	5		Plain	0	20	1	0	0	0	1,000	3.00	
			Charcoal	Contam.	Contam.	Contam.	Contam.	Contam.	Contam.			
	Clofazimine B Days 1-14, 12.5 mg/kg daily	1	Plain	~200	39	2	0	0	0	2,700	3.43	
			Charcoal	Contam.	54	5	3	0	0			
		2	Plain	~200	40	1	1	0	0	2,000	3.30	
			Charcoal	~300	20	4	1	0	0			
		3	Plain	~200	54	6	1	0	0	6,000	3.78	
			Charcoal	~200	70	12	1	0	0			
4		Plain	21	6	1	0	0	0	400	2.60		
		Charcoal	158	8	1	0	0	0				
5		Plain	~320	30	4	0	0	0	3,000	3.48		
		Charcoal	~1000	60	2	1	0	0				
Clofazimine C Days 1-14, 6.25 mg/kg daily	1	Plain	+	50	4	0	0	0	2,500	3.40		
		Charcoal	Contam.	Contam.	Contam.	Contam.	Contam.	Contam.				
	2	Plain	Inhib.	48	4	0	0	0	2,400	3.38		
		Charcoal	Contam.	Contam.	Contam.	Contam.	Contam.	Contam.				
	3	Plain	+	~166	17	1	0	0	8,500	3.93		
		Charcoal	+	Contam.	Contam.	Contam.	Contam.	Contam.				
	4	Plain	~100	16	1	0	0	0	800	2.90		
		Charcoal	~150	Contam.	Contam.	Contam.	Contam.	Contam.				
	5	Plain	+	56	8	0	0	0	3,300	3.52		
		Charcoal	+	66	4	0	0	0				
Clofazimine D Day 1, 200 mg/kg; Day 2, 100 mg/kg; Days 3-14, 75 mg/kg daily	1	Plain	Inhib.	9	1	0	0	0	450	2.65		
		Charcoal	Contam.	Contam.	Contam.	Contam.	Contam.	0				
	2	Plain	Inhib.	5	1	0	0	0	250	2.40		
		Charcoal	~200	Contam.	Contam.	Contam.	Contam.	Contam.				
	3	Plain	0	0	0	0	0	0	1,500	3.18		
		Charcoal	0	10	3	0	0	0				
	4	Plain	0	23	6	0	0	0	3,800	3.58		
		Charcoal	~1000	76	7	1	0	0				

Table S2. Raw CFU count data from mouse spleens.

Time point	Treatment group	Mouse	Agar plates	Final (4-week) CFU counts for the following 10-fold dilutions: (highlighted cell used to calculate CFU/spleen)						CFU/spleen	Log ₁₀ CFU/spleen
				0	1	2	3	4	5		
Day 14 (Week 2)	Clofazimine D	5	Plain	0	3	0	0	0	0	1,100	3.04
			Charcoal	~160	22	Contam.	Contam.	0	0		
	Clofazimine E	1	Plain	0	26	2	0	0	0	1,300	3.11
			Charcoal	~1000	Contam.	Contam.	Contam.	Contam.	Contam.		
		2	Plain	0	62	5	0	0	0	9,000	3.95
			Charcoal	+	~80	18	2	Contam.	0		
		3	Plain	0	19	1	0	0	0	950	2.98
			Charcoal	~300	Contam.	0	Contam.	0	0		
		4	Plain	~50	17	0	0	0	0	850	2.93
			Charcoal	~250	Contam.	Contam.	Contam.	0	0		
		5	Plain	0	0	0	0	0	0	100	2.00
			Charcoal		2	0	0	0	0		
	Clofazimine F	1	Plain	Inhib.	23	3	1	0	0	1,150	3.06
			Charcoal	~1000	Contam.	Contam.	Contam.	Contam.	Contam.		
		2	Plain	0	34	2	0	0	0	1,700	3.23
			Charcoal	~250	Contam.	Contam.	Contam.	Contam.	Contam.		
		3	Plain	Inhib.	4	0	1	0	0	200	2.30
			Charcoal	98	Contam.	Contam.	Contam.	Contam.	Contam.		
4		Plain	Inhib.	45	7	1	0	0	12,500	4.10	
		Charcoal	+	~160	25	2	0	0			
5		Plain	Inhib.	36	3	0	0	0	4,000	3.60	
		Charcoal	+	68	8	0	0	0			
Day 28 (Week 4)	Untreated	1	Plain	Inhib.	~250	54	3	0	0	27,000	4.43
			Charcoal	Contam.	Contam.	Contam.	Contam.	0	0		
		2	Plain	Inhib.	~250	14	0	0	0	7,000	3.85
			Charcoal	Contam.	Contam.	Contam.	Contam.	Contam.	0		
		3	Plain	Inhib.	~170	10	1	0	0	5,000	3.70
			Charcoal	Contam.	Contam.	Contam.	Contam.	1	0		
		4	Plain	Inhib.	~250	31	2	0	0	15,500	4.19
			Charcoal	Contam.	Contam.	Contam.	4	0	0		
		5	Plain	Inhib.	Inhib.	~200	18	1	0	90,000	4.95
			Charcoal	Contam.	Contam.	Contam.	Contam.	0	0		
	Clofazimine A	1	Plain	0	0	0	0	0	0	0	0.00
			Charcoal	0	0	0	0	0	0		
		2	Plain	0	4	2	0	0	0	250	2.40
			Charcoal	0	5	0	0	0	0		
		3	Plain	0	6	1	0	0	0	300	2.48
			Charcoal	0	2	0	0	0	0		
		4	Plain	0	0	0	0	0	0	0	0.00
			Charcoal	0	0	0	0	0	0		
		5	Plain	0	0	0	0	0	0	100,000	5.00
			Charcoal	0	0	0	0	2	0		
	Clofazimine B	1	Plain	0	6	2	0	0	0	300	2.48
			Charcoal	Contam.	Contam.	Contam.	Contam.	0	0		
2		Plain	0	8	0	0	0	0	400	2.60	
		Charcoal	Contam.	Contam.	Contam.	Contam.	Contam.	0			

Table S2. Raw CFU count data from mouse spleens.

Time point	Treatment group	Mouse	Agar plates	Final (4-week) CFU counts for the following 10-fold dilutions: (highlighted cell used to calculate CFU/spleen)						CFU/spleen	Log ₁₀ CFU/spleen	
				0	1	2	3	4	5			
Day 28 (Week 4)	Clofazimine B Day 1 - Week 4, 12.5 mg/kg daily	3	Plain	Inhib.	4	0	0	0	0	200	2.30	
			Charcoal	Contam.	Contam.	Contam.	Contam.	Contam.	0			
		4	Plain	Inhib.	30	2	1	0	0	1,500	3.18	
			Charcoal	Contam.	Contam.	Contam.	Contam.	0	0			
		5	Plain	Inhib.	9	1	0	0	0	850	2.93	
			Charcoal	71	17	1	0	0	0			
	Clofazimine C Day 1 - Week 4, 6.25 mg/kg daily	1	Plain	Inhib.	9	0	0	0	0	450	2.65	
			Charcoal	Contam.	Contam.	Contam.	Contam.	0	0			
		2	Plain	Inhib.	1	0	0	0	0	50	1.71	
			Charcoal	Contam.	Contam.	Contam.	Contam.	Contam.	0			
		3	Plain	Inhib.	26	1	0	0	0	1,300	3.11	
			Charcoal	Contam.	Contam.	Contam.	Contam.	0	0			
		4	Plain	Inhib.	16	0	0	0	0	800	2.90	
			Charcoal	Contam.	Contam.	Contam.	Contam.	Contam.	0			
		5	Plain	Inhib.	58	7	0	0	0	3,600	3.56	
			Charcoal	~800	72	4	0	0	0			
		Clofazimine D Day 1, 200 mg/kg; Day 2, 100 mg/kg; Days 3-14, 75 mg/kg daily; Weeks 2-4, 25 mg/kg 3x/week	1	Plain	0	0	0	0	0	0	2,500	3.40
				Charcoal	0	Inhib.	5	0	0	0		
	2		Plain	0	3	1	0	0	0	1,500	3.18	
			Charcoal	~200	30	2	0	0	0			
	3		Plain	0	9	5	2	0	0	1,400	3.15	
			Charcoal	~200	28	2	0	0	0			
	4		Plain	0	0	0	0	0	0	500	2.70	
			Charcoal	0	3	1	0	0	0			
	5		Plain	Inhib.	17	7	0	0	0	3,450	3.54	
			Charcoal	~500	69	2	1	0	0			
	Clofazimine E Day 1, 100 mg/kg; Day 2, 75 mg/kg; Days 3-14, 50 mg/kg daily; Weeks 2-4, 25 mg/kg 3x/week	1	Plain	0	2	0	0	0	0	100	2.00	
			Charcoal	Inhib.	1	0	0	0	0			
2		Plain	0	15	1	0	0	0	1,000	3.00		
		Charcoal	~300	20	2	0	0	0				
3		Plain	0	6	0	0	0	0	400	2.60		
		Charcoal	Inhib.	8	0	0	0	0				
4		Plain	0	3	1	0	0	0	550	2.74		
		Charcoal	Inhib.	11	1	0	0	0				
5		Plain	0	0	0	0	0	0	10	1.04		
		Charcoal	2	0	0	0	0	0				
Clofazimine F Day 1, 50 mg/kg; Days 2-14, 25 mg/kg daily; Weeks 2-4, 25 mg/kg 3x/week	1	Plain	0	Inhib.	3	0	0	0	850	2.93		
		Charcoal	147	17	1	0	0	0				
	2	Plain	Inhib.	1	0	0	0	0	200	2.30		
		Charcoal	45	4	0	0	0	0				
	3	Plain	0	3	0	0	0	0	350	2.55		
		Charcoal	0	7	0	0	0	0				
	4	Plain	Inhib.	12	0	0	0	0	1,150	3.06		
		Charcoal	~200	23	2	0	0	0				
	5	Plain	3	2	0	0	0	0	250	2.40		
		Charcoal	Inhib.	5	1	0	0	0				

Table S2. Raw CFU count data from mouse spleens.

Time point	Treatment group	Mouse	Agar plates	Final (4-week) CFU counts for the following 10-fold dilutions: (highlighted cell used to calculate CFU/spleen)						CFU/spleen	Log ₁₀ CFU/spleen
				0	1	2	3	4	5		
Day 56 (Week 8)	Untreated	1	Plain	+++	+	97	7	1	0	85,000	4.93
			Charcoal	++	+	~100	17	0	0		
		2	Plain	+	~400	41	3	0	0	21,500	4.33
			Charcoal	+	~400	43	4	0	0		
		3	Plain	++	+	~200	18	2	0	120,000	5.08
			Charcoal	++	+	~200	24	0	0		
		4	Plain	+	~1000	57	2	0	0	40,000	4.60
			Charcoal	+	~1000	80	9	0	0		
		5	Plain	+	~200	25	1	0	0	13,000	4.11
			Charcoal	+	~200	26	2	0	0		
	Clofazimine A Day 1 - Week 8, 25 mg/kg daily	1	Plain	0	1	0	0	0	0	50	1.71
			Charcoal	6	1	0	0	0	0		
		2	Plain	2	11	1	1	0	0	1,350	3.13
			Charcoal	~100	27	4	0	0	0		
		3	Plain	0	3	0	0	0	0	450	2.65
			Charcoal	53	9	1	0	0	0		
		4	Plain	0	0	0	0	0	0	20	1.32
			Charcoal	4	0	0	0	0	0		
5		Plain	0	3	0	1	0	0	150	2.18	
		Charcoal	33	1	0	0	0	0			
Clofazimine B Day 1 - Week 8, 12.5 mg/kg daily	1	Plain	0	0	0	0	0	0	25	1.41	
		Charcoal	5	0	0	0	0	0			
	2	Plain	0	2	1	0	0	0	100	2.00	
		Charcoal	27	2	0	0	0	0			
	3	Plain	2	2	0	0	0	0	100	2.00	
		Charcoal	52	2	1	0	0	0			
	4	Plain	0	16	5	0	0	0	3,550	3.55	
		Charcoal	~256	71	4	0	0	0			
	5	Plain	~200	24	0	0	0	0	1,200	3.08	
		Charcoal	24	12	0	0	0	0			
Clofazimine C Day 1 - Week 8, 6.25 mg/kg daily	1	Plain	32	3	1	0	0	0	450	2.65	
		Charcoal	85	9	1	0	0	0			
	2	Plain	~150	32	3	1	0	0	2,050	3.31	
		Charcoal	~150	41	1	1	0	0			
	3	Plain	~100	23	1	0	0	0	1,150	3.06	
		Charcoal	~200	19	2	0	0	0			
	4	Plain	~50	15	2	0	0	0	1,300	3.11	
		Charcoal	~200	26	0	0	0	0			
	5	Plain	17	7	0	0	0	0	850	2.93	
		Charcoal	68	17	0	0	0	0			
Clofazimine D Day 1, 200 mg/kg; Day 2, 100 mg/kg; Days 3-14, 75 mg/kg daily; Weeks 2-8, 25 mg/kg 3x/week	1	Plain	0	2	0	0	0	0	100	2.00	
		Charcoal	22	1	0	0	0	0			
	2	Plain	1	0	0	0	0	0	200	2.30	
		Charcoal	18	4	1	0	0	0			
	3	Plain	0	0	0	0	0	0	35	1.56	
		Charcoal	7	0	0	0	0	0			

Table S2. Raw CFU count data from mouse spleens.

Time point	Treatment group	Mouse	Agar plates	Final (4-week) CFU counts for the following 10-fold dilutions: (highlighted cell used to calculate CFU/spleen)						CFU/spleen	Log ₁₀ CFU/spleen	
				0	1	2	3	4	5			
Day 56 (Week 8)	Clofazimine D	4	Plain	0	4	0	0	0	0	200	2.30	
			Charcoal	35	3	0	0	0	0			
		5	Plain	0	2	0	0	0	0	400	2.60	
			Charcoal	16	8	0	0	0	0			
	Clofazimine E Day 1, 100 mg/kg; Day 2, 75 mg/kg; Days 3-14, 50 mg/kg daily; Weeks 2-8, 25 mg/kg 3x/week	1	Plain	0	6	0	0	0	0	550	2.74	
			Charcoal	64	11	2	0	0	0			
		2	Plain	0	1	2	0	0	0	150	2.18	
			Charcoal	13	3	0	0	0	0			
		3	Plain	0	1	0	0	0	0	50	1.71	
			Charcoal	8	0	0	0	0	0			
		4	Plain	0	1	1	0	0	0	300	2.48	
			Charcoal	42	6	1	0	0	0			
		5	Plain	0	0	0	0	0	0	15	1.20	
			Charcoal	3	0	0	0	0	0			
		Clofazimine F Day 1, 50 mg/kg; Days 2-14, 25 mg/kg daily; Weeks 2-8, 25 mg/kg 3x/week	1	Plain	6	5	0	0	0	0	250	2.40
				Charcoal	82	4	0	0	0	0		
	2		Plain	0	5	0	0	0	0	450	2.65	
			Charcoal	41	9	1	0	0	0			
	3		Plain	0	5	1	0	0	0	250	2.40	
			Charcoal	60	1	1	0	0	0			
	4		Plain	0	1	1	0	0	0	50	1.71	
			Charcoal	7	1	0	0	0	0			
	5		Plain	0	0	0	0	0	0	100	2.00	
			Charcoal	16	2	0	0	0	0			
Day 84 (Week 12)	Untreated	1	Plain	+ / + +	+	36	3	0	0	22,500	4.35	
			Charcoal	+ / + +	+	45	1	2	0			
		2	Plain	+ / + +	+	26	3	0	0	21,500	4.33	
			Charcoal	+ / + +	+	43	3	0	0			
		3	Plain	Contam.	+	39	2	2	1	19,500	4.29	
			Charcoal	+ / + +	+	37	6	0	0			
		4	Plain	+ / + +	+	48	6	2	0	28,000	4.45	
			Charcoal	+ / + +	+	56	3	2	0			
		5	Plain	+	+	23	3	0	0	15,500	4.19	
			Charcoal	+	+	31	2	0	0			
		Clofazimine A Day 1 - Week 12, 25 mg/kg daily	1	Plain	0	0	0	0	0	0	0	0.00
				Charcoal	0	0	0	0	0	0		
	2		Plain	0	0	0	0	0	0	0	0.00	
			Charcoal	Contam.	0	0	0	0	0			
	3		Plain	0	0	0	0	0	0	10	1.04	
			Charcoal	2	0	0	0	0	0			
	4		Plain	0	0	0	0	0	0	0	0.00	
			Charcoal	0	0	0	0	0	0			
	5		Plain	0	0	0	0	0	0	35	1.56	
			Charcoal	7	0	0	0	0	0			
	Clofazimine B	1	Plain	1	1	0	0	0	0	100	2.00	
			Charcoal	3	2	0	0	0	0			

Table S2. Raw CFU count data from mouse spleens.

Time point	Treatment group	Mouse	Agar plates	Final (4-week) CFU counts for the following 10-fold dilutions: (highlighted cell used to calculate CFU/spleen)						CFU/spleen	Log ₁₀ CFU/spleen
				0	1	2	3	4	5		
Day 84 (Week 12)	Clofazimine B Day 1 - Week 12, 12.5 mg/kg daily	2	Plain	0	5	0	0	0	0	250	2.40
			Charcoal	~49	5	1	0	0	0		
		3	Plain	0	0	0	0	0	0	100	2.00
			Charcoal	7	2	0	0	0	0		
		4	Plain	0	0	0	0	0	0	50	1.71
			Charcoal	2	1	0	0	0	0		
	5	Plain	Inhib.	5	0	0	0	0	300	2.48	
		Charcoal	Inhib.	6	2	0	0	0			
	Clofazimine C Day 1 - Week 12, 6.25 mg/kg daily	1	Plain	1	0	0	0	0	0	50	1.71
			Charcoal	6	1	0	0	0	0		
		2	Plain	1	1	0	0	0	0	50	1.71
			Charcoal	0	0	0	0	0	0		
		3	Plain	1	0	0	0	0	0	35	1.56
			Charcoal	7	0	0	0	0	0		
		4	Plain	12	2	0	0	0	0	350	2.55
			Charcoal	~100	7	0	0	0	0		
		5	Plain	22	12	2	0	0	0	650	2.81
			Charcoal	~50	13	1	0	0	0		
	Clofazimine D Day 1, 200 mg/kg; Day 2, 100 mg/kg; Days 3-14, 75 mg/kg daily; Weeks 2-12, 25 mg/kg 3x/week	1	Plain	0	0	0	0	0	0	200	2.30
			Charcoal	Inhib.	4	0	0	0	0		
		2	Plain	0	0	0	0	0	0	5	0.78
			Charcoal	1	0	0	0	0	0		
		3	Plain	0	0	0	0	0	0	25	1.41
			Charcoal	5	0	0	0	0	0		
		4	Plain	0	0	0	0	0	0	15	1.20
			Charcoal	3	0	0	0	0	0		
		5	Plain	0	0	0	0	0	0	10	1.04
			Charcoal	2	0	0	0	0	0		
	Clofazimine E Day 1, 100 mg/kg; Day 2, 75 mg/kg; Days 3-14, 50 mg/kg daily; Weeks 2-12, 25 mg/kg 3x/week	1	Plain	0	0	0	0	0	0	10	1.04
			Charcoal	2	0	0	0	0	0		
2		Plain	0	1	0	0	0	0	150	2.18	
		Charcoal	Contam.	3	0	0	0	0			
3		Plain	0	0	0	0	0	0	15	1.20	
		Charcoal	3	0	0	0	0	0			
4		Plain	0	0	0	0	0	0	0	0.00	
		Charcoal	0	0	0	0	0	0			
5		Plain	0	1	0	0	0	0	50	1.71	
		Charcoal	1	0	0	0	0	0			
Clofazimine F Day 1, 50 mg/kg; Days 2-14, 25 mg/kg daily; Weeks 2-12, 25 mg/kg 3x/week	1	Plain	Inhib.	1	0	0	0	0	50	1.71	
		Charcoal	Inhib.	1	0	0	0	0			
	2	Plain	0	0	0	0	0	0	0	0.00	
		Charcoal	0	0	0	0	0	0			
	3	Plain	0	0	0	0	0	0	0	0.00	
		Charcoal	0	0	0	0	0	0			
	4	Plain	0	0	0	0	0	0	5	0.78	
		Charcoal	1	0	0	0	0	0			

Table S2. Raw CFU count data from mouse spleens.

Time point	Treatment group	Mouse	Agar plates	Final (4-week) CFU counts for the following 10-fold dilutions: (highlighted cell used to calculate CFU/spleen)						CFU/spleen	Log ₁₀ CFU/spleen
				0	1	2	3	4	5		
Day 84 (Week 12)	Clofazimine F	5	Plain	0	0	0	0	0	0	15	1.20
			Charcoal	3	0	0	0	0	0		

+++ indicates uniform confluent growth.

++ indicates non-uniform confluent growth.

+ indicates individual colonies too numerous to accurately count or estimate.

~ indicates that an accurate CFU count could not be obtained due to some merged/touching colonies.

Blank cell, data not available.

Contam., contamination.

Inhib., visible growth inhibition.

Table S3. Clofazimine concentration measurements in the lungs from uninfected mice.

Sample	Week	Weeks of CFZ administration	Weeks post-CFZ administration	Mean [CFZ] ($\mu\text{g/g}$)	SD
Lung accumulation	1	1	---	5.23	2.57
	2	2	---	11.27	2.77
	4	4	---	29.98	5.00
	8	8	---	52.59	6.74
	12	12	---	40.83	8.16
	16	16	---	29.76	13.07
	20	20	---	37.39	5.45
Lung elimination	5	4	1	11.89	2.31
	6	4	2	7.13	2.13
	8	4	4	2.57	1.30
	12	4	8	0.13	0.01
	20	4	16	0.67	0.22
	28	4	24	0.17	0.05
	9	8	1	18.87	2.17
	10	8	2	19.97	2.36
	12	8	4	8.69	0.20
	16	8	8	0.51	0.44
	24	8	16	8.0	11.98
	32	8	24	0.18	0.19
	13	12	1	45.31	14.86
	14	12	2	27.22	2.43
	16	12	4	4.15	2.33
	20	12	8	3.76	1.51
	28	12	16	1.11	0.47
	36	12	24	0.31	0.19
	17	16	1	23.61	12.03
	18	16	2	23.00	4.23
	20	16	4	13.85	4.11
	24	16	8	9.64	7.13
	32	16	16	2.04	0.49
	40	16	24	0.55	0.38
	21	20	1	106.11	42.93
	22	20	2	40.50	18.64
	24	20	4	48.79	16.07
	28	20	8	23.73	11.00
	36	20	16	3.49	2.11
	44	20	24	0.70	0.22

Mice received clofazimine at 25 mg/kg daily for the indicated duration of administration. Week represents the time point in the overall experiment and corresponds to the X-axis in Figure 2. CFZ, clofazimine; SD, standard deviation of the mean.

Table S4. Clofazimine concentration measurements in the liver from uninfected mice.

Sample	Week	Weeks of CFZ administration	Weeks post-CFZ administration	Mean [CFZ] ($\mu\text{g/g}$)	SD
Liver accumulation	1	1	---	7.05	1.85
	2	2	---	11.25	0.29
	4	4	---	33.25	6.19
	8	8	---	59.97	26.55
	12	12	---	82.37	8.41
	16	16	---	111.29	77.30
	20	20	---	107.21	12.65
Liver elimination	5	4	1	9.91	3.15
	6	4	2	6.96	1.38
	8	4	4	1.60	0.97
	12	4	8	0.04	0.01
	20	4	16	0.18	0.05
	28	4	24	0.10	0.03
	9	8	1	8.17	2.48
	10	8	2	3.49	2.21
	12	8	4	4.72	1.87
	16	8	8	0.33	0.34
	24	8	16	0.18	0.13
	32	8	24	0.33	0.44
	13	12	1	15.03	1.50
	14	12	2	27.37	11.33
	16	12	4	4.00	2.84
	20	12	8	10.70	9.15
	28	12	16	1.10	1.13
	36	12	24	0.41	0.56
	17	16	1	34.79	22.55
	18	16	2	68.31	5.53
	20	16	4	41.90	34.21
	24	16	8	8.18	3.38
	32	16	16	16.61	1.55
	40	16	24	0.77	0.95
	21	20	1	82.49	45.08
	22	20	2	68.91	57.34
	24	20	4	156.91	52.11
	28	20	8	62.50	18.48
36	20	16	6.99	5.20	
44	20	24	1.24	0.43	

Mice received clofazimine at 25 mg/kg daily for the indicated duration of administration. Week represents the time point in the overall experiment and corresponds to the X-axis in Figure 2. CFZ, clofazimine; SD, standard deviation of the mean.

Table S5. Clofazimine concentration measurements in serum from uninfected mice.

Sample	Week	Weeks of CFZ administration	Weeks post-CFZ administration	Mean [CFZ] ($\mu\text{g/mL}$)	SD
Serum accumulation	1	1	---	0.92	0.30
	2	2	---	0.85	0.03
	4	4	---	1.05	0.04
	8	8	---	2.25	0.03
	12	12	---	1.30	0.29
	16	16	---	1.21	0.21
	20	20	---	1.00	0.12
Serum elimination	5	4	1	1.33	0.17
	6	4	2	0.72	0.13
	8	4	4	0.31	0.09
	12	4	8	Below LLOQ	---
	20	4	16	Below LLOQ	---
	28	4	24	Below LLOQ	---
	9	8	1	1.17	0.35
	10	8	2	0.90	0.11
	12	8	4	0.34	0.07
	16	8	8	0.10	0.06
	24	8	16	Below LLOQ	---
	32	8	24	Below LLOQ	---
	13	12	1	0.93	0.09
	14	12	2	1.01	0.03
	16	12	4	0.40	0.10
	20	12	8	0.35	0.05
	28	12	16	0.11	0.04
	36	12	24	0.11	0.00
	17	16	1	0.81	0.07
	18	16	2	0.62	0.05
	20	16	4	0.70	0.11
	24	16	8	0.30	0.07
	32	16	16	0.12	0.07
	40	16	24	0.08	0.02
	21	20	1	0.99	0.18
	22	20	2	0.68	0.10
	24	20	4	0.49	0.15
	28	20	8	0.32	0.02
	36	20	16	0.19	0.07
	44	20	24	0.08	0.01

Mice received clofazimine at 25 mg/kg daily for the indicated duration of administration. Week represents the time point in the overall experiment and corresponds to the X-axis in Figure 2. CFZ, clofazimine; SD, standard deviation of the mean; LLOQ, lower limit of quantitation.

Table S6. Clofazimine concentration measurements in the spleen from uninfected mice.

Sample	Week	Weeks of CFZ administration	Weeks post-CFZ administration	Mean [CFZ] ($\mu\text{g/g}$)	SD
Spleen accumulation	1	1	---	8.11	3.12
	2	2	---	11.18	0.52
	4	4	---	50.43	1.92
	8	8	---	190.74	96.40
	12	12	---	4684.68	409.71
	16	16	---	3765.80	712.26
	20	20	---	6773.65	703.11
Spleen elimination	5	4	1	20.70	3.65
	6	4	2	13.17	1.14
	8	4	4	5.94	2.85
	12	4	8	0.44	0.11
	20	4	16	1.73	0.35
	28	4	24	0.51	0.05
	9	8	1	376.99	256.45
	10	8	2	301.84	232.53
	12	8	4	1936.85	2148.93
	16	8	8	228.73	388.37
	24	8	16	11.48	9.75
	32	8	24	96.96	123.52
	13	12	1	2766.26	1058.69
	14	12	2	3528.44	1089.41
	16	12	4	1078.41	1229.96
	20	12	8	3334.04	2148.05
	28	12	16	642.93	366.79
	36	12	24	424.27	496.57
	17	16	1	4041.94	1482.08
	18	16	2	5114.89	351.28
	20	16	4	7297.53	2011.76
	24	16	8	2001.10	603.34
	32	16	16	1341.08	610.37
	40	16	24	1981.06	1700.00
	21	20	1	6101.90	858.70
	22	20	2	4534.30	944.05
	24	20	4	3623.01	192.22
	28	20	8	9020.41	376.53
	36	20	16	4055.40	1948.26
	44	20	24	1308.75	250.84

Mice received clofazimine at 25 mg/kg daily for the indicated duration of administration. Week represents the time point in the overall experiment and corresponds to the X-axis in Figure 3. CFZ, clofazimine; SD, standard deviation of the mean.

Table S7. Mean colony forming unit (CFU) counts from mouse lungs and spleens in the dose-ranging experiment.

Treatment group	Organ	Mean (SD) log ₁₀ CFU/organ at the following time points:								
		Day -41	Day 0	Day 1	Day 2	Day 7	Day 14	Day 28	Day 56	Day 84
Untreated	Lungs	2.17 (0.28)	6.49 (0.30)	6.76 (0.22)	6.51 (0.32)	6.47 (0.29)	6.48 (0.42)	6.02 (0.29)	6.21 (0.49)	6.16 (0.32)
	Spleen		4.66 (0.21)	4.61 (0.29)	4.79 (0.40)	4.64 (0.47)	4.47 (0.42)	4.22 (0.50)	4.61 (0.40)	4.32 (0.09)
Clofazimine A	Lungs			6.44 (0.54)	6.59 (0.37)	6.21 (0.41)	5.66 (0.37)	4.65 (0.77)	3.91 (0.89)	2.66 (1.52)
	Spleen			4.30 (0.34)	4.46 (0.14)	4.05 (0.44)	3.39 (0.27)	1.98 (2.08)	2.20 (0.72)	0.52 (0.73)
Clofazimine B	Lungs			6.61 (0.35)	6.42 (0.15)	6.01 (0.18)	5.53 (0.14)	4.91 (0.76)	2.41 (1.23)	3.22 (0.58)
	Spleen			4.88 (0.28)	4.63 (0.18)	3.88 (0.19)	3.32 (0.44)	2.70 (0.35)	2.41 (0.88)	2.12 (0.32)
Clofazimine C	Lungs			6.38 (0.17)	6.15 (0.32)	6.43 (0.44)	5.50 (0.30)	4.61 (0.27)	4.43 (0.80)	3.07 (0.67)
	Spleen			4.45 (0.23)	4.26 (0.14)	4.36 (0.50)	3.43 (0.37)	2.79 (0.69)	3.01 (0.24)	2.07 (0.57)
Clofazimine D	Lungs			6.50 (0.30)	6.43 (0.36)	5.87 (0.23)	5.34 (0.50)	4.91 (0.54)	3.32 (0.83)	3.79 (0.71)
	Spleen			4.46 (0.20)	4.31 (0.43)	3.82 (0.33)	2.97 (0.46)	3.19 (0.32)	2.15 (0.40)	1.35 (0.58)
Clofazimine E	Lungs			6.15 (0.06)	6.45 (0.39)	6.16 (0.41)	5.78 (0.47)	4.50 (0.29)	4.25 (0.33)	3.34 (0.75)
	Spleen			4.34 (0.18)	4.49 (0.22)	4.03 (0.19)	3.00 (0.69)	2.28 (0.78)	2.06 (0.61)	1.23 (0.82)
Clofazimine F	Lungs			6.64 (0.30)	6.44 (0.14)	6.23 (0.29)	5.41 (0.59)	4.54 (0.40)	3.98 (0.58)	3.31 (0.58)
	Spleen			4.45 (0.18)	4.66 (0.39)	3.92 (0.18)	3.26 (0.67)	2.65 (0.33)	2.23 (0.37)	0.74 (0.75)

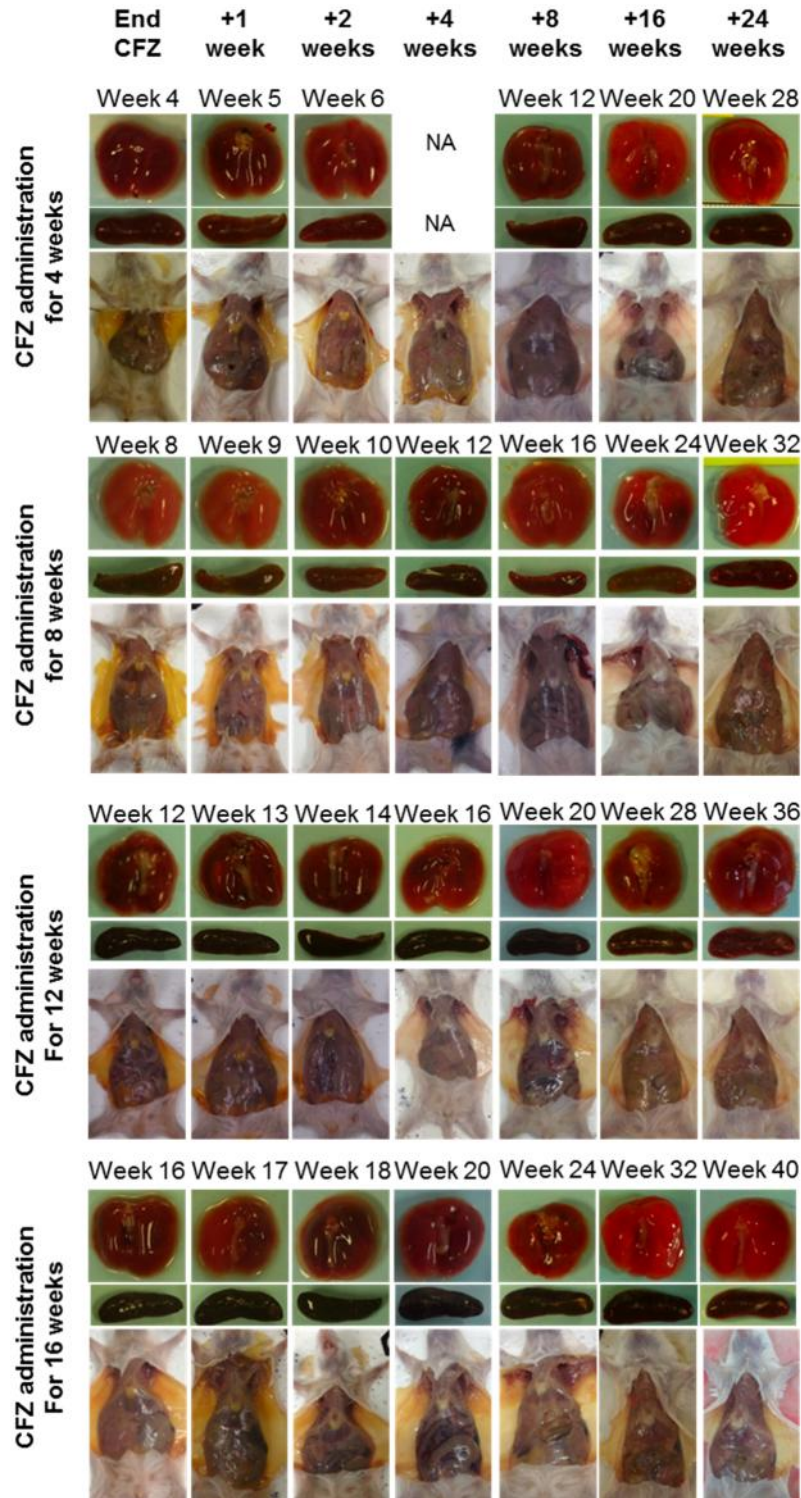


Figure S1. Clofazimine-induced discoloration in the lungs, spleen and subcutaneous adipose tissue in uninfected BALB/c mice. These photographs represent the 24 weeks following the discontinuation of clofazimine administration that was of 4, 8, 12 or 16 weeks' duration. CFZ, clofazimine; NA, not available.

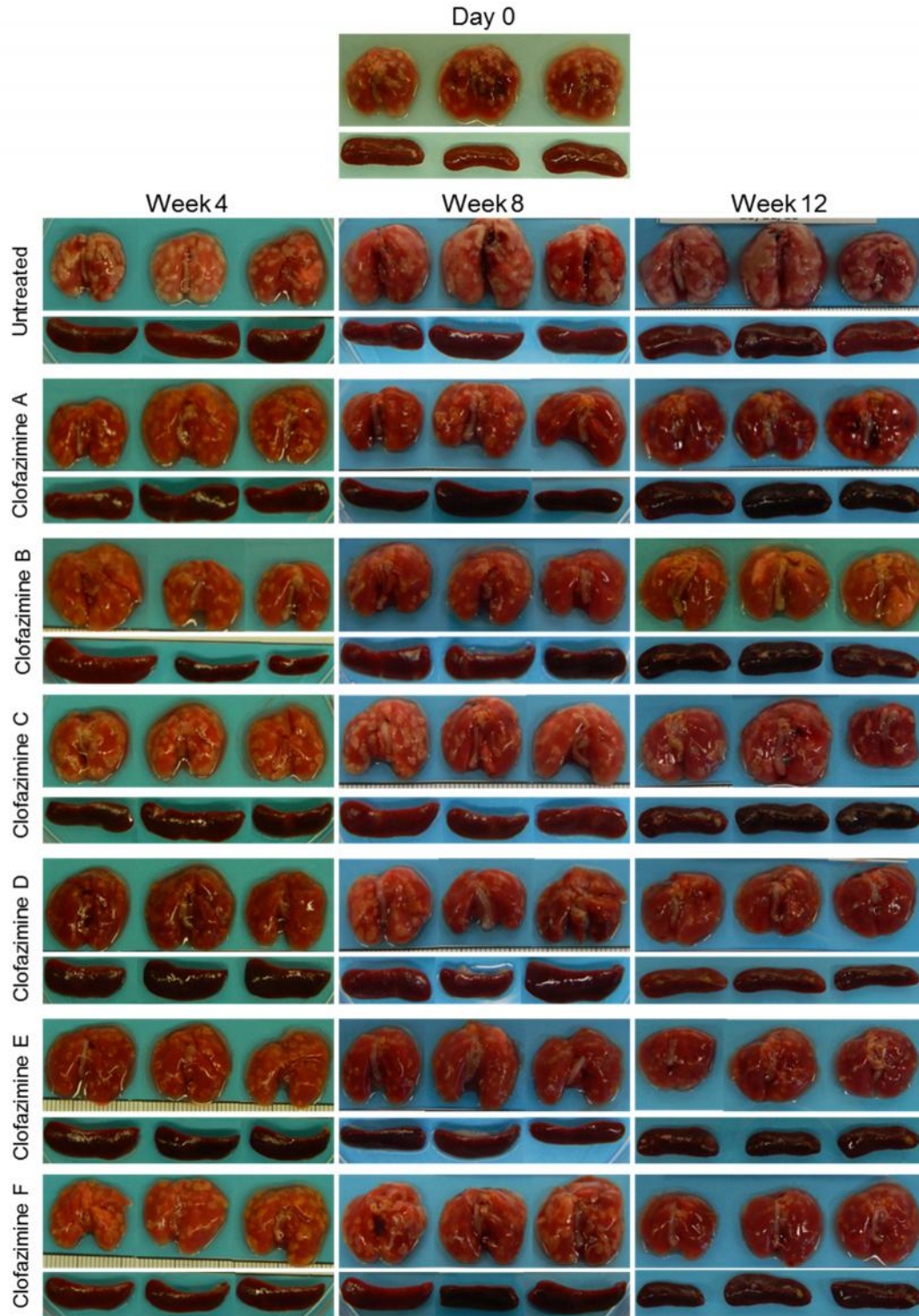


Figure S2. Gross pathology of lungs and spleens from *M. tuberculosis*-infected mice before (Day 0) and during treatment with a clofazimine-containing regimen. Treatment was initiated 24 days after infection. Drug regimens are described in Table 1.