

## Supplementary material

**Table S1. Surface binding of O25b specific mAbs to ST131 isolates of different PFGE types.**

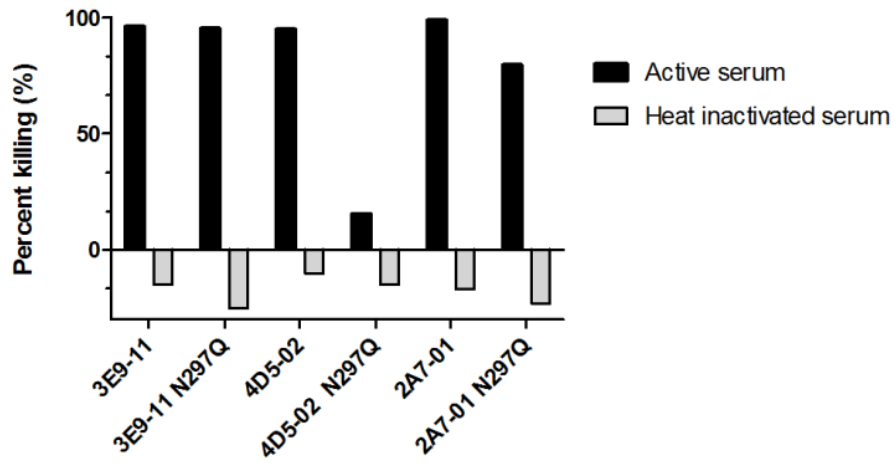
strain	PFGE (1)	3E9-11	2A7-01	4D5-02	control IgG1	secondary control
		Median	Median	Median	Median	Median
L 52	A	75052	44241	56999	189	192
ESBL 09.077	B	24431	22816	20486	180	187
OH 16	C	22875	14651	19070	180	186
MS 18	D	25129	17237	20738	220	183
ESBL 10.573	E	27653	43607	24149	183	184
ESBL 07.403	F	27595	18243	21702	180	183
RG 06	G	90500	58124	59972	198	189
MH 07	H	40278	23972	27193	205	202
ESBL 09.151	I	34493	21954	25264	198	183
EC NZ 26	J	32958	25042	28155	201	190
EC NZ 94	K	35286	25014	28072	190	192
dutchEC 45	L	31204	20932	23379	189	189
WP 15	M	165291	70712	61971	183	193
ESBL 07.391	N	26752	17132	21654	178	180
ESBL 08.291	O	180	187	181	186	194
81009	nd	41232	21887	29118	187	187
3O	nd	34948	36296	40488	192	192

Binding of 3E9-11, 2A7-01 and 4D5-02 as well as control (irrelevant target) IgG1 mAb was tested at 40 µg/ml concentration in flow cytometry to the surface of ST131 strains. Representative isolates of different PFGE types originated (kindly provided by Gisele Peirano, University of Calgary, Canada) from an extensively characterized collection of ST131 isolates (1). Table shows median fluorescence intensity values measured.

### Reference:

1. **Peirano G, van der Bij AK, Freeman JL, Poirel L, Nordmann P, Costello M, Tchesnokova VL, Pitout JD.** 2014. Characteristics of Escherichia coli sequence type 131 isolates that produce extended-spectrum beta-lactamases: global distribution of the H30-Rx sublineage. *Antimicrob. Agents Chemother.* **58**:3762-3767.

Figure S1



**Figure S1. Complement dependency of serum bactericidal assay.** *E. coli* O25b bacteria were incubated with glycosylated and aglycosylated mAbs in the presence of 50% depleted normal or heat inactivated (56°C for 40 min) human serum. Percent killing is expressed as CFU recovered in test groups relative to the control group (irrelevant IgG1 control) following a 3h incubation at 37°C.