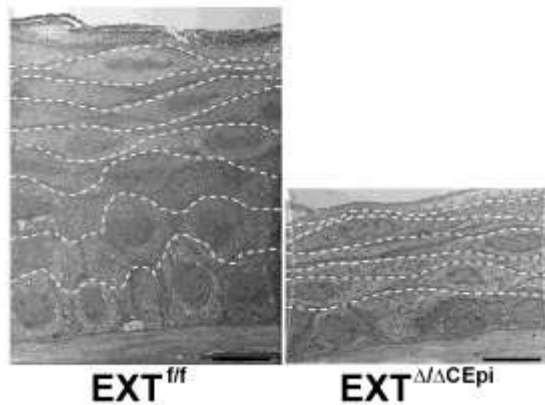
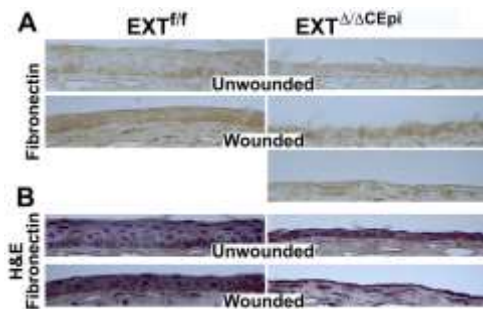


## Supplementary Figure legends



**Supplemental Fig 1. Representation of cell layers in electron microscopy images of stratified epithelium.** Corneas from  $EXT^{ff}$  and  $EXT^{\Delta/\Delta CEpi}$  mice were collected at P55. Mice were induced at P21.  $EXT^{\Delta/\Delta CEpi}$  mice present loss of cell layers when compared to  $EXT^{ff}$  mice. Scale bar: 10  $\mu$ m.



**Supplemental Fig 2. Fibronectin staining during corneal wound healing of  $EXT^{ff}$  and  $EXT^{\Delta/\Delta CEpi}$  mice.** Debridement wounds were performed on P55  $EXT^{ff}$  and  $EXT^{\Delta/\Delta CEpi}$  mice induced at P21 and analyzed after 24 hours. Corneas were processed for paraffin sectioning and analyzed for Fibronectin (A and B). (A) Absence of hematoxylin counter stain enables a clearer visualization of DAB staining. (B) Fibronectin staining counter stained with hematoxylin and eosin.