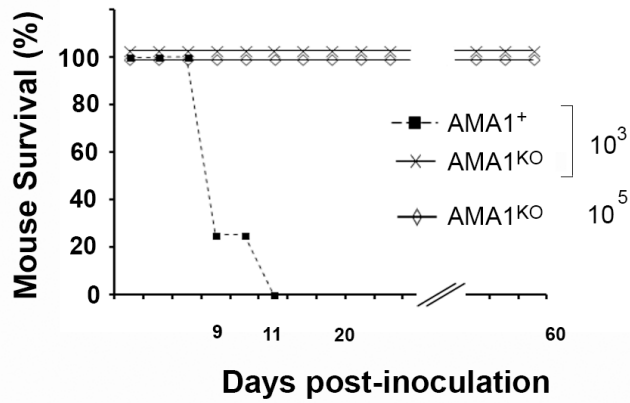


TARDIEUX Supplementary Figure 1 : Lagal et al.

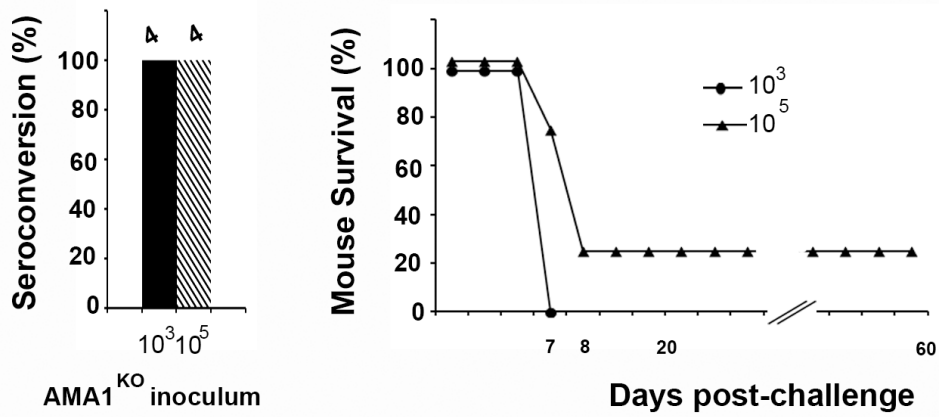
**a**

BALB/c

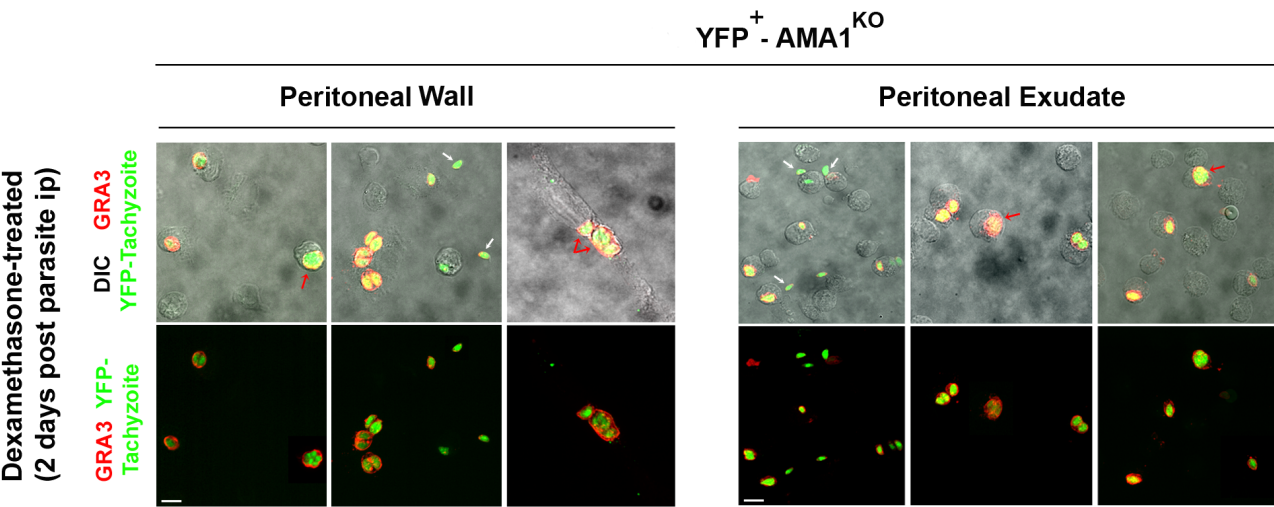


**b**

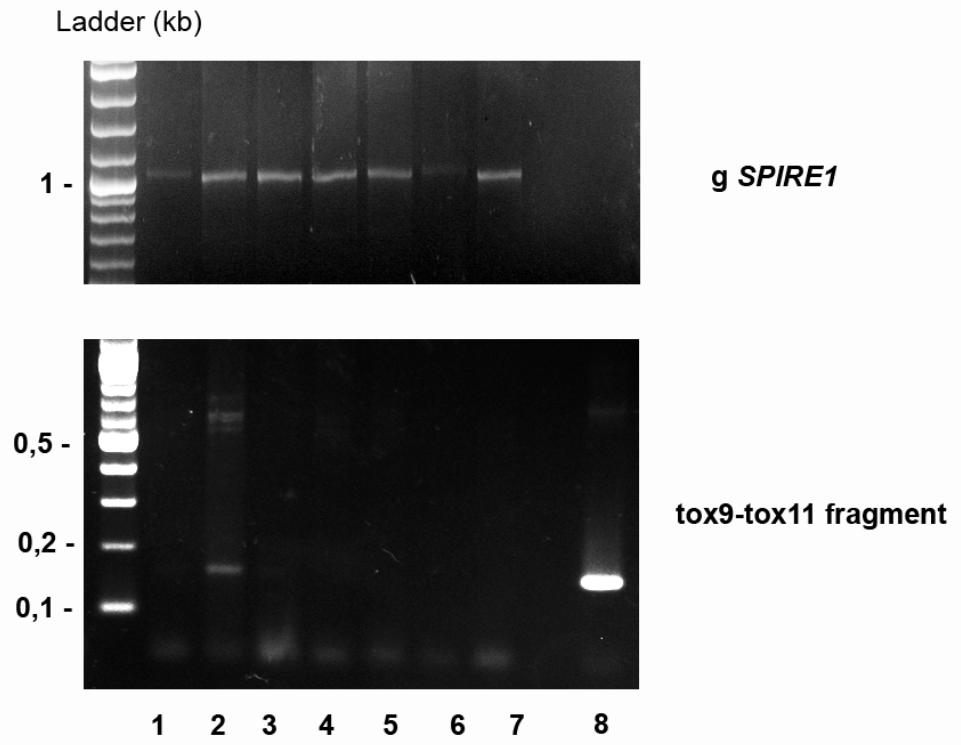
BALB/c



TARDIEUX Supplemental Figure 2: Lagal et al.



TARDIEUX- Supplemental Figure 3: Lagal et al.



## Supplemental Figure Legends

**Supplemental Figure 1. (a)** Mouse survival curves for BALB/c mice injected subcutaneously with different doses of Dcre-YFP<sup>+</sup>-AMA1<sup>-</sup> (AMA1<sup>KO</sup>) or diCre-AMA1<sup>+</sup> (AMA1<sup>+</sup>) tachyzoites. Data are from one experiment with n=4 mice. **(b)** AMA1<sup>KO</sup> survival mice inoculated 8 weeks earlier were challenged with 10<sup>5</sup> of type I virulent strain diCre-AMA1<sup>+</sup>. The histogram on left panel shows the rate of seroconversion of mice tested 6 weeks after inoculation with AMA1<sup>KO</sup> and the number of mice analyzed is indicated on top of each column. The right panel shows mice survival curves after immunization 8 weeks earlier with different doses of AMA1<sup>KO</sup> tachyzoites and injected with 10<sup>5</sup> diCre-AMA1<sup>+</sup>.

**Supplemental Figure 2. Peritoneal mesothelial cells and exudates from dexamethasone-immunocompromised mice.** AMA1<sup>KO</sup> tachyzoites massively in cells collected from the peritoneal exudate and peritoneal wall 2 days p.i. with 10<sup>5</sup> parasites. The percentage of cells collected are 22 % ± 5.5% and 27% ± 3.8% mesothelial cells and peritoneal cells respectively (n= 500 cells, duplicates for n=2 mice). Note that free parasites were frequently observed in the two samples (red and white arrows respectively) by sharp contrast with the samples collected from immunocompetent mice.

**Supplemental Figure 3. Detection of AMA1<sup>KO</sup> parasites in the brain of infected mice.** DNA from 4 out of 10 C57B/6J mice brains surviving at 2.5 10<sup>2</sup> and 1.5 10<sup>3</sup> AMA1<sup>KO</sup> was purified 15 weeks p.i. using TRIzol LS Reagent. Parasite genomic DNA was detected by PCR using specific primers Tox 9–11 (Reischl U *et al.* BMC Infect Dis 2003). Mouse brain DNA integrity was checked by amplifying a fragment

from the mouse gene *Spire-1*. 1: brain from naïve mouse; 2-3: brains of mice infected with type II Pru: $\Delta ku80$ , 4-5: brain of mice infected with  $2.5 \cdot 10^2$  AMA1<sup>KO</sup>; 6-7: brain of mice infected with  $1.5 \cdot 10^3$  AMA1<sup>KO</sup>; 8: DNA from free tachyzoites. kb: kilobases.