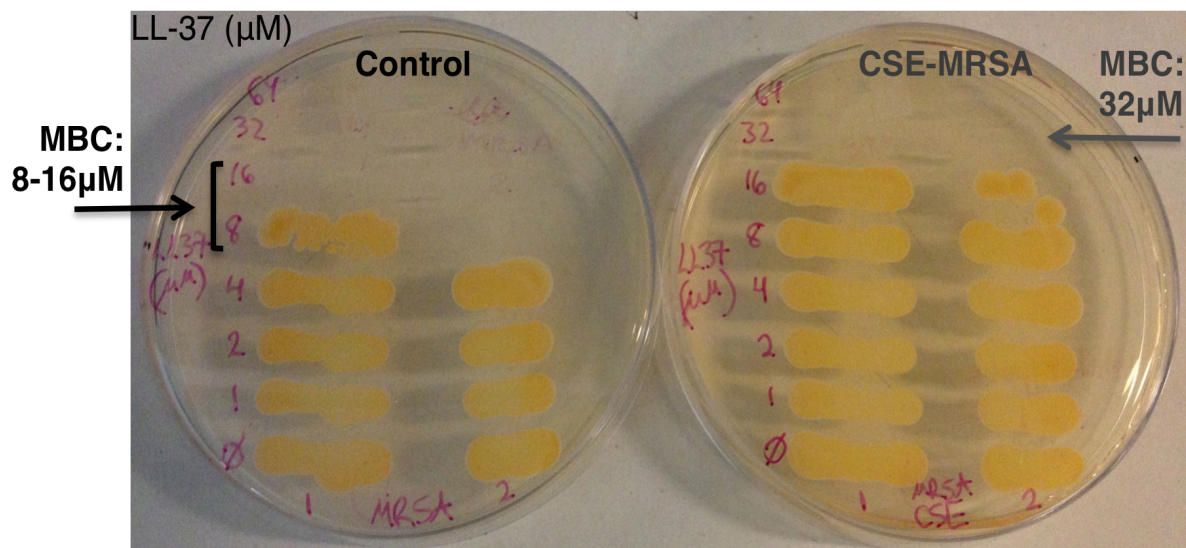


## SUPPLEMENTAL MATERIALS

### S1

#### Minimum Bactericidal Concentration (MBC) of LL-37

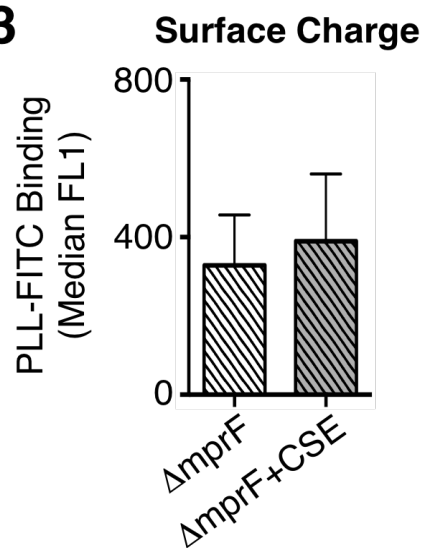


**Fig S1** MRSA exposed to CSE prior to incubation with human AMP LL-37 had a higher MBC compared to control MRSA (32 vs 8-16  $\mu\text{M}$ , respectively), as evidenced by live bacteria growing on THA plates after overnight incubation with LL-37.

### S2

LL-37 assays:	MIC	Metabolic activity inhibition	MBC
control	4.3 $\mu\text{M}$	6 $\mu\text{M}$	12 $\mu\text{M}$
CSE-MRSA	8 $\mu\text{M}$	16 $\mu\text{M}$	32 $\mu\text{M}$

**Table S2** Compared to control MRSA, CSE-MRSA were more resistant to LL-37 by MIC, metabolic activity, and MBC assays.

**S3**

**Fig S3** *S. aureus* strain SA113 $\Delta mprF$ , in which *mprF* is knocked out, had no change in PLL-FITC binding after exposure to CSE.