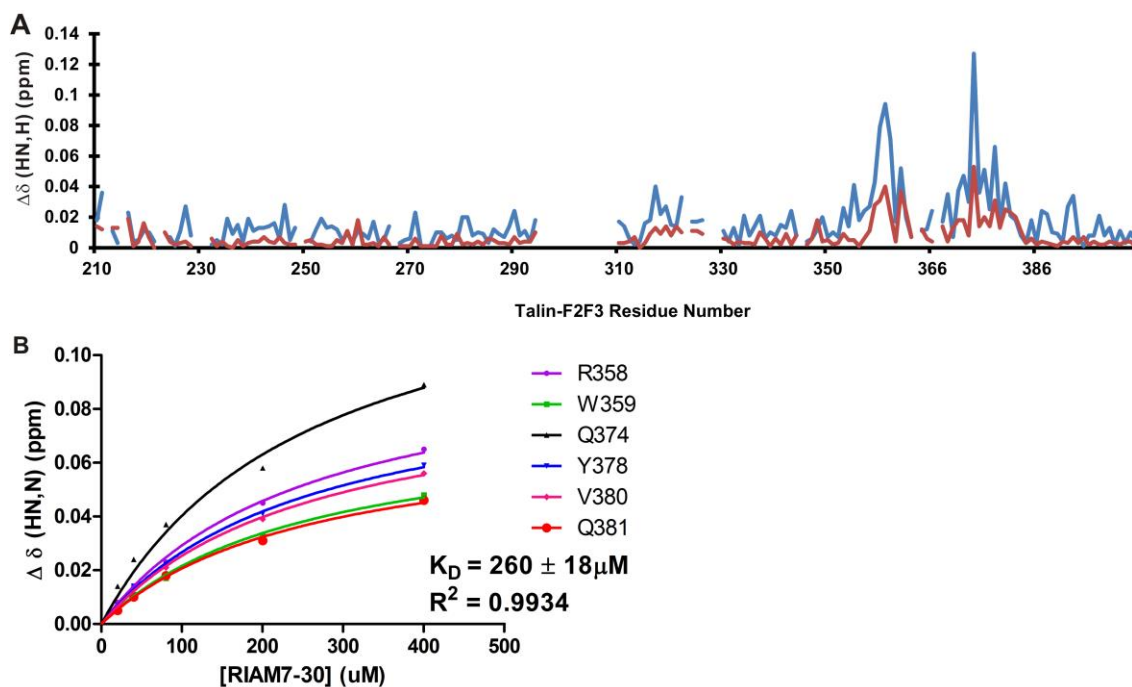
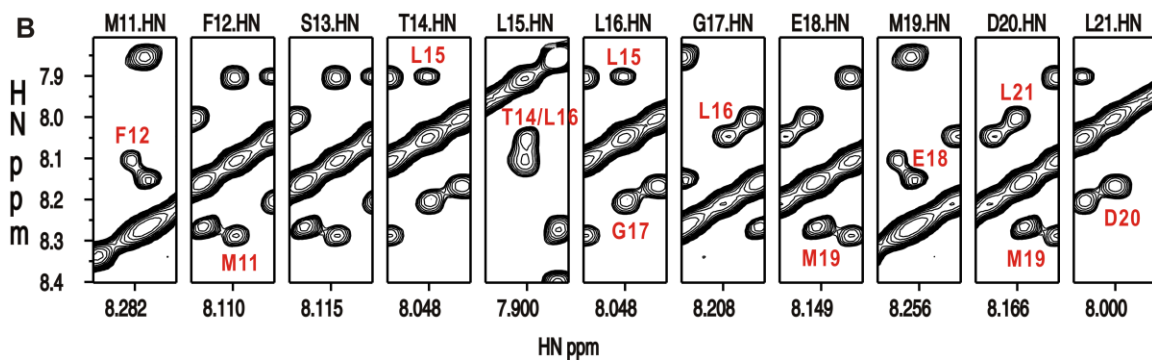
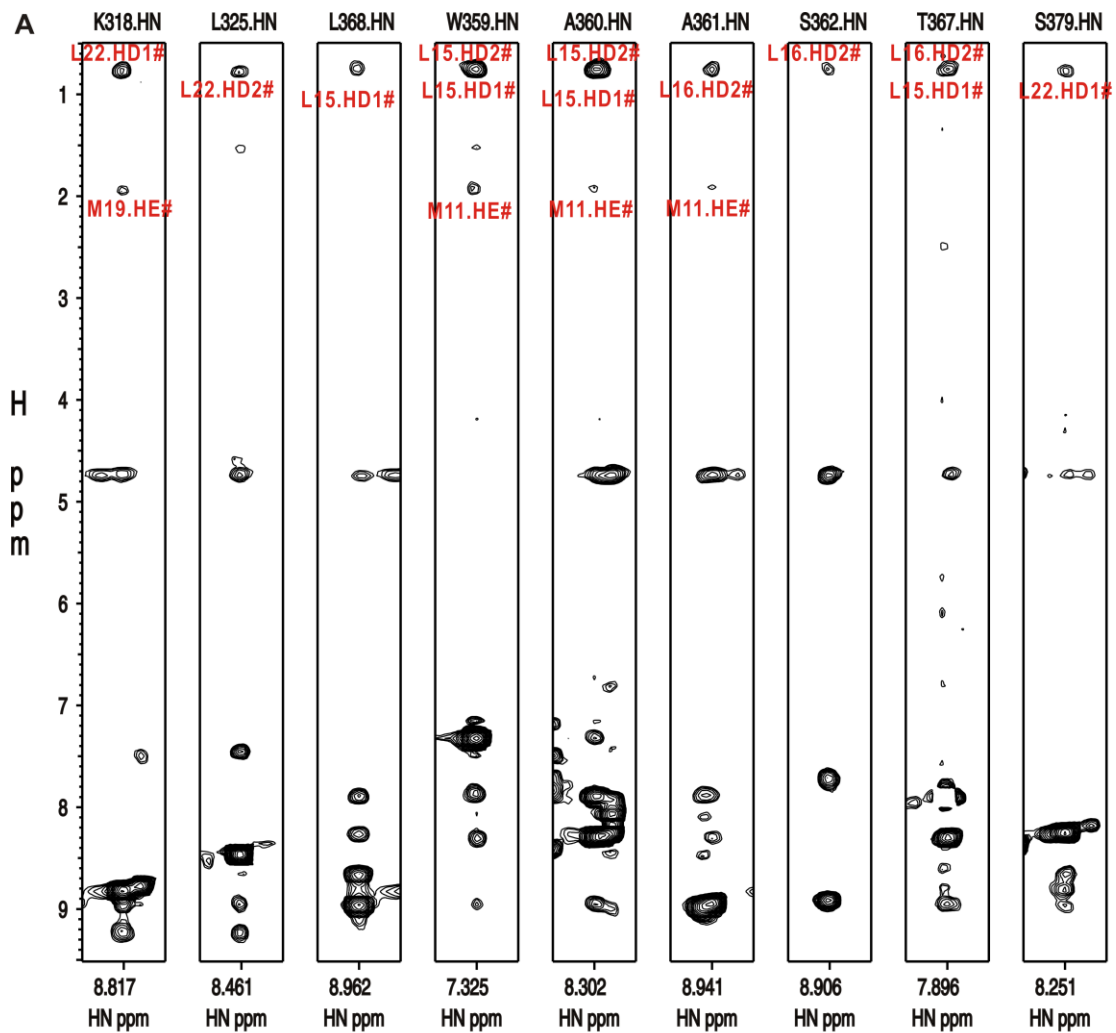


## Supplementary Information

### Supplementary Figures



**Supplementary Figure 1: RIAM-N binding to talin-F2F3.** (A) Comparison of the chemical shift perturbation of talin-F2F3 by RIAM-1-306 (light blue) and RIAM-N (salmon), showing similar perturbation patterns. (B)  $K_D$  determination by chemical shift change of selected residues in talin-F3 as a function of RIAM-N concentration.



**Supplementary Figure 2: Selective NOE data for talin-F3/RIAM-N complex.** (A) Intermolecular NOE strips between amide protons of  $^{15}\text{N}/100\% ^2\text{H}$ -labeled talin-F3 and unlabeled RIAM-N. (B) Sequential  $\text{NH}_i\text{-NH}_{i+1}$  NOEs of bound RIAM-N characteristic of helical conformation.