

Supplementary data.

FIGURE S1. Basal ROS production is increased in *mdx* myotubes. Cells were preloaded with CM-H₂DCFDA 30 minutes before recording under non-stimulated conditions. Slope quantification of CM-DCFDA fluorescent signal in both *wt* and *mdx* myotubes (n=10 and n=4 cells, for ROIs and cells respectively, 3 different preparations is shown).

FIGURE S2. LPS stimulation increases NF- κ B activity and IL-6 mRNA levels in both *wt* and *mdx* myotubes. **A.** NF- κ B activity was assessed with luciferase reporters after 12 h (n=6). **B.** IL-6 mRNA levels was measures by real time PCR after 2h (n=4). **= P <0.01, ***= P <0.001 (indicated or versus basal *wt* value).

Figure S1

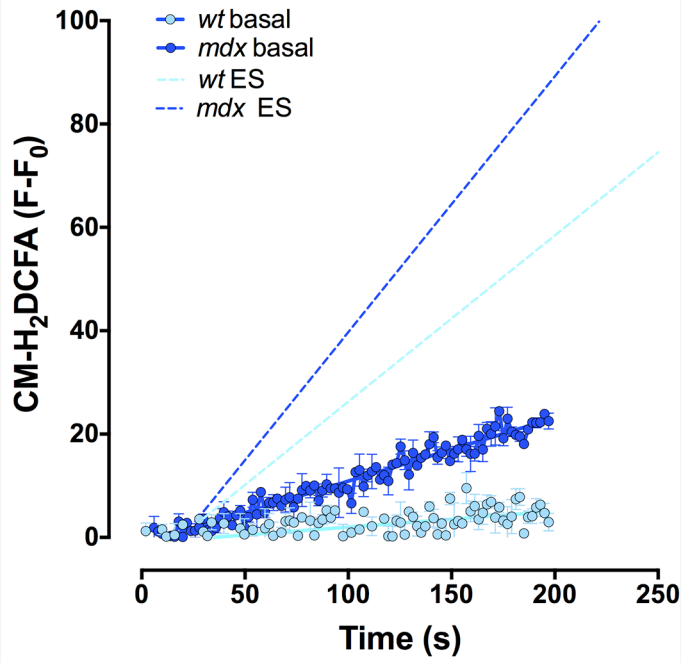


Figure S2

