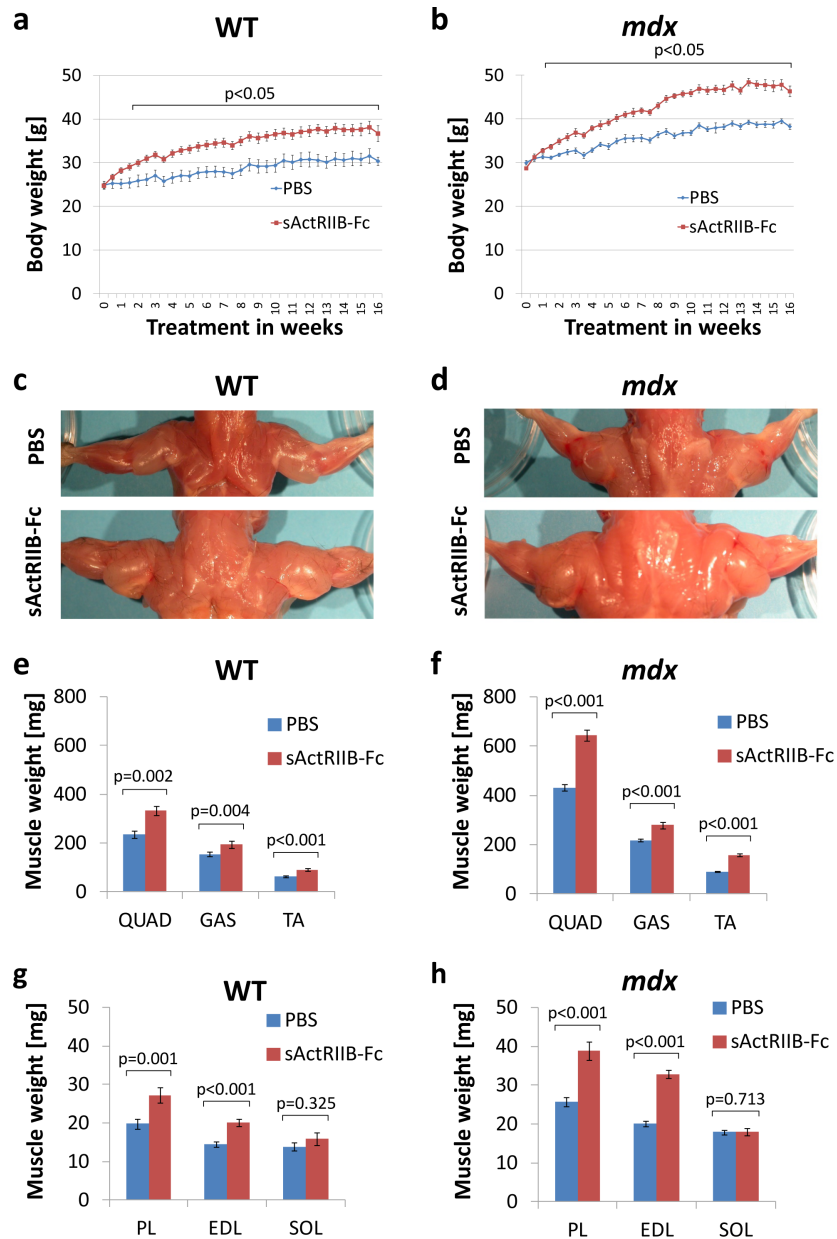


SUPPLEMENTAL FIGURES



Supplemental Figure 1. Effect of sActRIIB-Fc on body weight and muscle weight in wild-type and *mdx* mice.

2-months-old wild-type mice (**a,c,e,g**) and *mdx* mice (**b,d,f,h**) were systemically treated for 4 months with sActRIIB-Fc or PBS (n=5 for each condition). (**a,b**) Effect of sActRIIB-Fc on body weight increase in comparison to PBS treated control mice. (**c,d**) Dorsal view on the upper shoulder girdle with fore limbs. (**e-h**) Effect of sActRIIB-Fc on muscle wet weight of *quadriceps* (QUAD), *gastrocnemius* (GAS), *tibialis anterior* (TA), *plantaris* (PL), *extensor digitorum longus* (EDL), and *soleus* (SOL) muscles (n=5 for each condition). Values are shown as means \pm SEM. p-Values were calculated using the nonparametric *U*-Test.