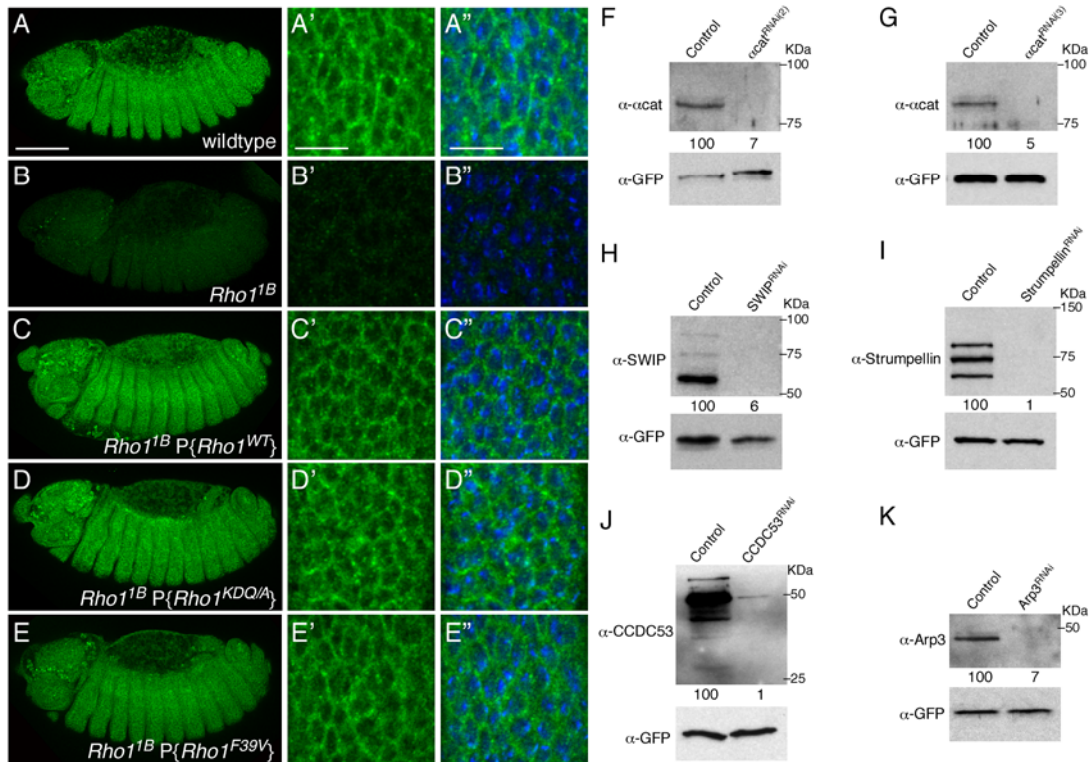


# Supplemental Materials

*Molecular Biology of the Cell*

Verboon et al.

**Figure S1**  
(Verboon et al.)



**FIGURES1:Expression controls.**(A-E) Surface projections of stage 15 wildtype (A-A''), *Rho1<sup>1B</sup>* (B-B''), *Rho1<sup>1B</sup> P{Rho1<sup>WT</sup>}* (C-C''), *Rho1<sup>1B</sup> P{Rho1<sup>KDQ/AAA</sup>}* (D-D''), *Rho1<sup>1B</sup> P{Rho1<sup>F39V</sup>}* (E-E'')embryos stained with antibodies recognizing Rho1 (α-Rho1(P1D9)) (A-E') and DAPI to visualize nuclei (A''-E'').Higher magnification images (A'-E'') of the corresponding embryos in A-E are shown.Scale bars: 100 μm for A-E; 10 μm for A'-E''.(F-K) Western analysis of protein extracts from control(*Pxn-Gal4*) and *α-catenin<sup>RNAi(2)</sup>* (F), *α-catenin<sup>RNAi(3)</sup>* (G), *SWIP<sup>RNAi</sup>* (H), *Strumpellin<sup>RNAi</sup>* (I), *CCDC53<sup>RNAi</sup>* (J), or *Arp3<sup>RNAi</sup>* (K)hemocytes probed with antibodies recognizing their respective proteins and a loading control (α-GFP). The normalized levels of each protein are indicated (with control set to 100).