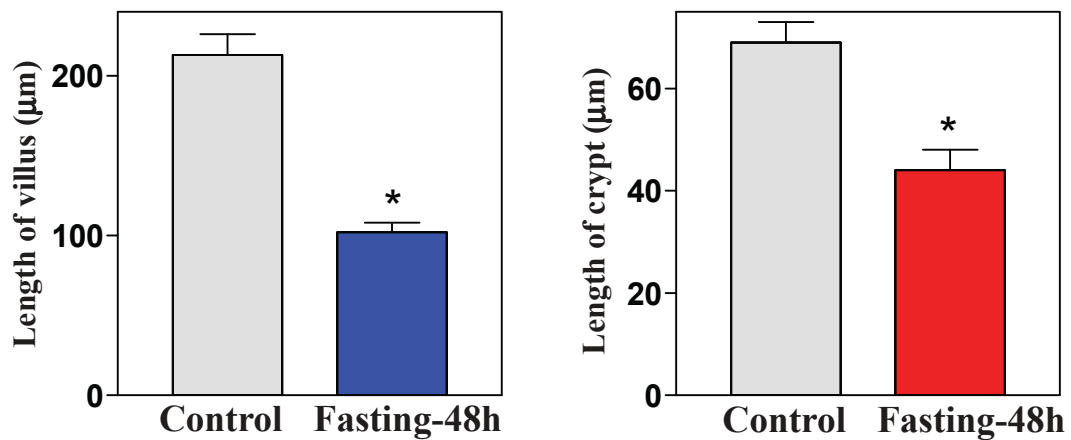


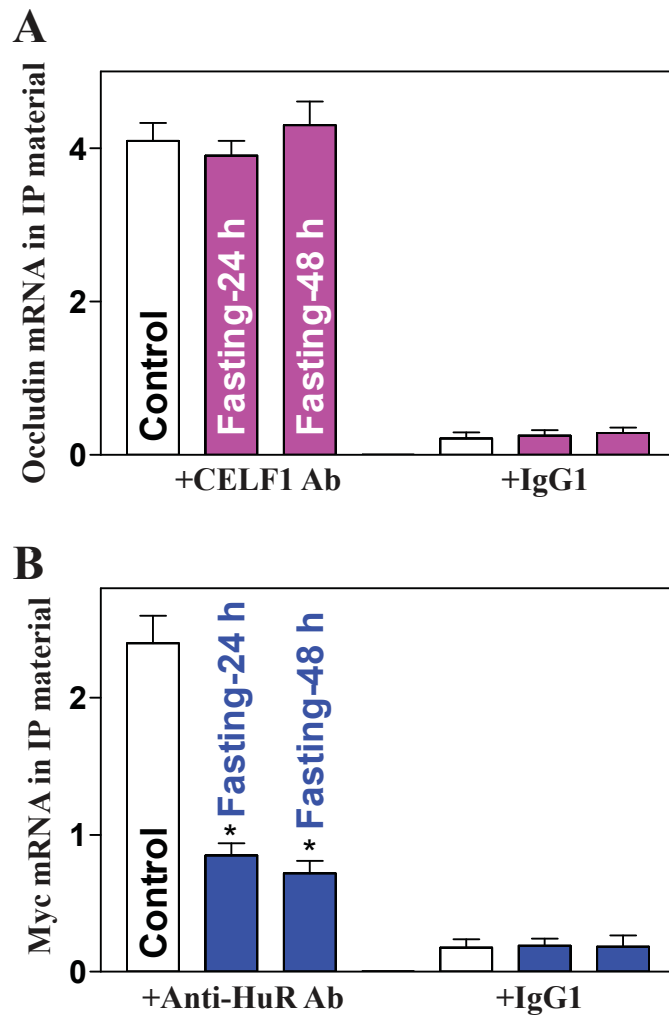
Supplemental Materials

Molecular Biology of the Cell

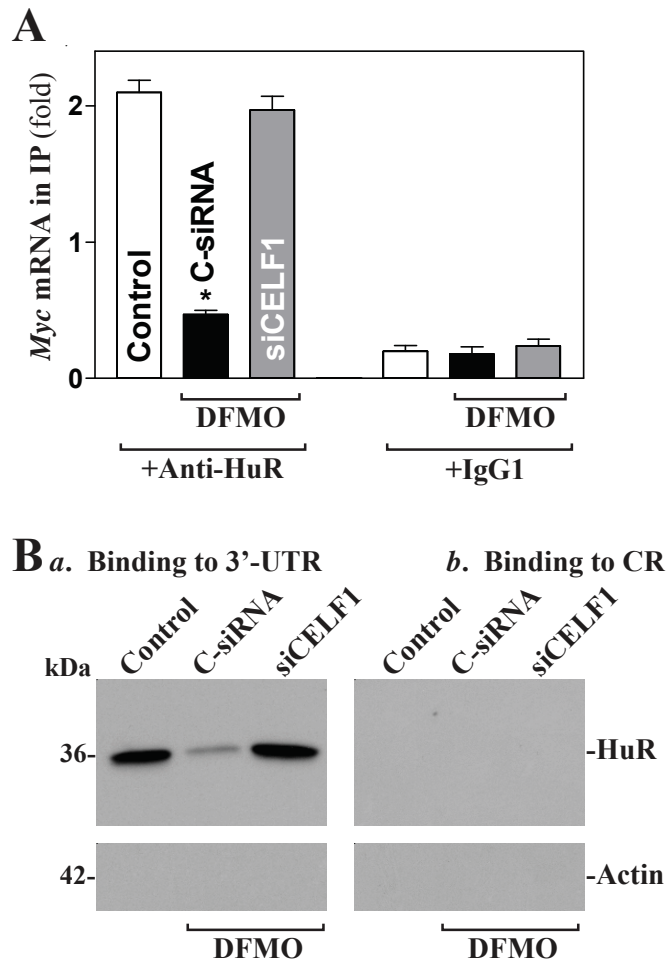
Liu et al.



Supplementary Figure 1. Changes in the length of villi (*left*) and crypt (*right*) of the small intestinal mucosa in mice fasted for 48 h. Values are shown as the means \pm SEM from data from six samples. * $P < 0.05$ compared with control.



Supplementary Figure 2. Fasting fails to alter CELF1 interaction with occludin mRNA (A) but inhibits HuR association with the *Myc* mRNA (B) in small intestinal mucosa. After immunoprecipitation (IP) of RNA-protein complexes using either anti-CELF1 antibody (Ab), anti-HuR Ab or control IgG1, mRNAs were isolated and measured by qRT-PCR analysis. Values are the means \pm SEM ($n = 5$). * $P < 0.05$ compared with control.



Supplementary Figure 3. CELF1 silencing increases HuR association with the *Myc* mRNA in polyamine-deficient cells. **(A)** Association of endogenous HuR with endogenous the *Myc* mRNA as measured by RNP-IP/qRT-PCR analysis. Results were expressed as the means \pm SEM from three separate experiments. $*P < 0.05$ compared with control or cells transfected with siCELf1. **(B)** Representative HuR immunoblots using the pull-down materials by biotinylated transcripts of the *Myc* 3'-UTR (*a*) or CR (*b*).

Supplementary Table-1:

Possible CELF1- and HuR-binding sites in the F2 of *Myc* 3'-UTR

2041 tgctca aagttaaggc ataaaagaac *ttttttttat* gcttcccatc ttctttcttt
2101 ttcctttaac agatttgat *ttaattgttt tttttaaaaa* aatcttccgg tgcacatagg
2161 gcctttaaat gtaataact ttaataaac gttataaca gttatacaag at

Underline, CELF1-binding sites

Red italic, HuR-binding site