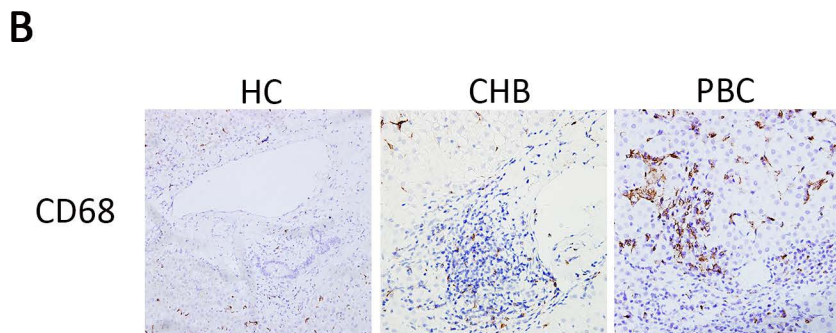
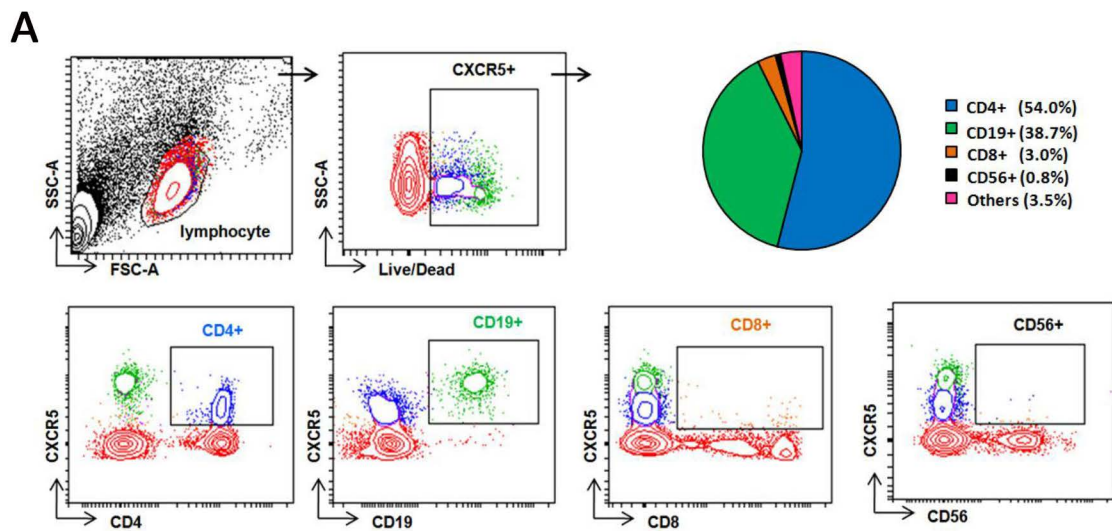


# Supplementary Figure 1



## Supplementary Table 1

Clinical characteristics and group sampling sizes of PBC patients and controls

	HC	CHB	PBC
Number	52	41	66
Sex (male/female)	8/44	25/16	16/50
Age (years)#	38 (22-52)	35 (15-61)	48 (19-72)
AST(U/L)#	20.0 (18.0-31.0)	152.0 (21.0-2420.0)	82.0 (13.0-316.0)
ALP (U/L)#	42.0 (35.0-76.0)	178.0 (24.0-499.0)	230.0 (39.0-1120.0)
TB (umol/L) #	11.4 (4.2-20.4)	47.5 (20.9-371.2)	18.9 (4.9-591.5)
AMA (+/-)	0/52	ND	66/0
Serum study	52	0	47
PBMC study	42	36	40
Liver tissue	14	5	8
Paraffin embedded tissue	3	5	6

#Median (range)

ND, no data

## Supplementary Table 2

Clinical characteristics of longitudinal study subjects at baseline

	UR <sup>#</sup>	NUR <sup>#</sup>
N	15	10
Sex (male/female)	3/12	1/9
Age (years)*	50 (42-60)	47 (38-59)
AST(U/L)*	64.0 (26.0-244.0)	115.5 (31.0-316.0)
ALP (U/L)*	316.0 (56.0-628.0)	330.5 (143.0-789.0)
TB (μmol/L) *	15.5 (9.0-39.4)	40.2 (18.0-306.1)
Cirrhosis (yes/no)	5/10	7/3
AMA (+/-)	10/0	7/0
Serum study	10	7
PBMC study	8	5
Treatment duration	24 weeks	24 weeks

#UR: UDCA biochemical response; NUR: non- UDCA biochemical response

\*Median(range)