

Supplementary Table 1A

p-values Comparing IL-1β Expression Between Tissue Macrophages						
	ALN	Colon	Jejunum	Liver	Spleen	Stimulation:
ALN		<0.0001	0.0384	<0.0001	<0.0001	LPS
		<0.0001	NS	<0.0001	0.0004	BS-PGN
		<0.0001	NS	<0.0001	<0.0001	EC-PGN
Colon	<0.0001		<0.0001	<0.0001	<0.0001	LPS
	<0.0001		<0.0001	0.0008	0.0017	BS-PGN
	<0.0001		<0.0001	<0.0001	<0.0001	EC-PGN
Jejunum	0.0384	<0.0001		<0.0001	<0.0001	LPS
	NS	<0.0001		<0.0001	0.0004	BS-PGN
	NS	<0.0001		<0.0001	<0.0001	EC-PGN
Liver	<0.0001	<0.0001	<0.0001		NS	LPS
	<0.0001	0.0008	<0.0001		NS	BS-PGN
	<0.0001	<0.0001	<0.0001		NS	EC-PGN
Spleen	<0.0001	<0.0001	<0.0001	NS		LPS
	0.0004	0.0017	<0.0001	NS		BS-PGN
	<0.0001	<0.0001	<0.0001	NS		EC-PGN

Supplementary Table 1B

p-values Comparing IL-1β Expression Between Stimulus Conditions				
	LPS	BS-PGN	EC-PGN	Tissue:
LPS		NS	NS	ALN
		NS	NS	Colon
		NS	NS	Jejunum
		NS	NS	Liver
		NS	0.0174	Spleen
BS-PGN	NS		NS	ALN
	NS		NS	Colon
	NS		NS	Jejunum
	NS		NS	Liver
	NS		0.0013	Spleen
EC-PGN	NS	NS		ALN
	NS	NS		Colon
	NS	NS		Jejunum
	NS	NS		Liver
	0.0174	0.0013		Spleen

Supplemental Table 1. p-Values Comparing Stimulated Macrophage IL-1 β Expression.

A. *p*-Values comparing absolute IL-1 β -expression among similar stimulation conditions, between macrophages from disparate tissues as shown in Figure 3A. Significance assessed by unpaired, two-tailed t-test. **B.** *p*-Values comparing absolute IL-1 β -expression among similar tissue macrophages, between different stimuli. Significance assessed by paired, two-tailed t-test.

Supplementary Table 2A

p-values Comparing IL-6 Expression Between Tissue Macrophages						
	ALN	Colon	Jejunum	Liver	Spleen	Stimulation:
ALN		<0.0001	NS	NS	NS	LPS
		0.0012	NS	NS	NS	BS-PGN
		<0.0001	NS	NS	NS	EC-PGN
Colon	<0.0001		<0.0001	<0.0001	<0.0001	LPS
	0.0012		0.0243	0.0008	0.0017	BS-PGN
	<0.0001		0.0001	<0.0001	<0.0001	EC-PGN
Jejunum	NS	<0.0001		NS	NS	LPS
	NS	0.0243		NS	NS	BS-PGN
	NS	0.0001		NS	NS	EC-PGN
Liver	NS	<0.0001	NS		NS	LPS
	NS	0.0008	NS		NS	BS-PGN
	NS	<0.0001	NS		NS	EC-PGN
Spleen	NS	<0.0001	NS	NS		LPS
	NS	0.0017	NS	NS		BS-PGN
	NS	<0.0001	NS	NS		EC-PGN

Supplementary Table 2B

p-values Comparing IL-6 Expression Between Stimulus Conditions				
	LPS	BS-PGN	EC-PGN	Tissue:
LPS		NS	NS	ALN
		NS	NS	Colon
		NS	NS	Jejunum
		NS	NS	Liver
		NS	0.0174	Spleen
BS-PGN	NS		NS	ALN
	NS		NS	Colon
	NS		NS	Jejunum
	NS		NS	Liver
	NS		0.0013	Spleen
EC-PGN	NS	NS		ALN
	NS	NS		Colon
	NS	NS		Jejunum
	NS	NS		Liver
	0.0174	0.0013		Spleen

Supplemental Table 2. p-Values Comparing Stimulated Macrophage IL-6 Expression.

A. p-Values comparing absolute IL-6-expression among similar stimulation conditions, between macrophages from disparate tissues as shown in Figure 3B. Significance assessed by unpaired, two-tailed t-test. **B.** p-Values comparing absolute IL-6-expression among similar tissue macrophages, between different stimuli. Significance assessed by paired, two-tailed t-test.

Supplementary Table 3A

p-values Comparing TNFα Expression Between Tissue Macrophages						
	ALN	Colon	Jejunum	Liver	Spleen	Stimulation:
ALN		0.0099	0.0229	NS	0.0004	LPS
		NS	NS	NS	0.0050	BS-PGN
		0.0095	NS	NS	0.0014	EC-PGN
Colon	0.0099		NS	0.0172	<0.0001	LPS
	NS		NS	NS	0.0116	BS-PGN
	0.0095		0.0324	0.0078	0.0002	EC-PGN
Jejunum	0.0229	NS		NS	<0.0001	LPS
	NS	NS		NS	0.0052	BS-PGN
	NS	0.0324		NS	0.0004	EC-PGN
Liver	NS	0.0172	NS		0.0130	LPS
	NS	NS	NS		0.0161	BS-PGN
	NS	0.0078	NS		0.0283	EC-PGN
Spleen	0.0004	<0.0001	<0.0001	0.0130		LPS
	0.0050	0.0116	0.0052	0.0161		BS-PGN
	0.0014	0.0002	0.0004	0.0283		EC-PGN

Supplementary Table 3B

p-values Comparing TNFα Expression Between Stimulus Conditions				
	LPS	BS-PGN	EC-PGN	Tissue:
LPS		NS	NS	ALN
		NS	NS	Colon
		NS	0.0289	Jejunum
		NS	NS	Liver
		NS	0.0122	Spleen
BS-PGN	NS		NS	ALN
	NS		NS	Colon
	NS		NS	Jejunum
	NS		NS	Liver
	NS		0.0021	Spleen
EC-PGN	NS	NS		ALN
	NS	NS		Colon
	0.0289	NS		Jejunum
	NS	NS		Liver
	0.0122	0.0021		Spleen

Supplemental Table 3. p-Values Comparing Stimulated Macrophage TNF α Expression.

A. *p*-Values comparing absolute TNF α -expression among similar stimulation conditions, between macrophages from disparate tissues as shown in Figure 3C. Significance assessed by unpaired, two-tailed t-test. **B.** *p*-Values comparing absolute TNF α -expression among similar tissue macrophages, between different stimuli. Significance assessed by paired, two-tailed t-test.

Supplementary Table 4A

p-values Comparing Functionality Between Tissue Macrophages						
	ALN	Colon	Jejunum	Liver	Spleen	Stimulation:
ALN		<0.0001	NS	NS	0.0020	LPS
		0.0002	NS	NS	0.0025	BS-PGN
		<0.0001	NS	NS	0.0015	EC-PGN
Colon	<0.0001		<0.0001	<0.0001	<0.0001	LPS
	0.0002		0.0175	0.0011	0.0063	BS-PGN
	<0.0001		<0.0001	<0.0001	<0.0001	EC-PGN
Jejunum	NS	<0.0001		NS	0.0024	LPS
	NS	0.0175		NS	0.0333	BS-PGN
	NS	0.0000		NS	0.0072	EC-PGN
Liver	NS	<0.0001	NS		0.0381	LPS
	NS	0.0011	NS		0.0173	BS-PGN
	NS	<0.0001	NS		NS	EC-PGN
Spleen	0.0020	<0.0001	0.0024	0.0381		LPS
	0.0025	0.0063	0.0333	0.0173		BS-PGN
	0.0015	<0.0001	0.0072	NS		EC-PGN

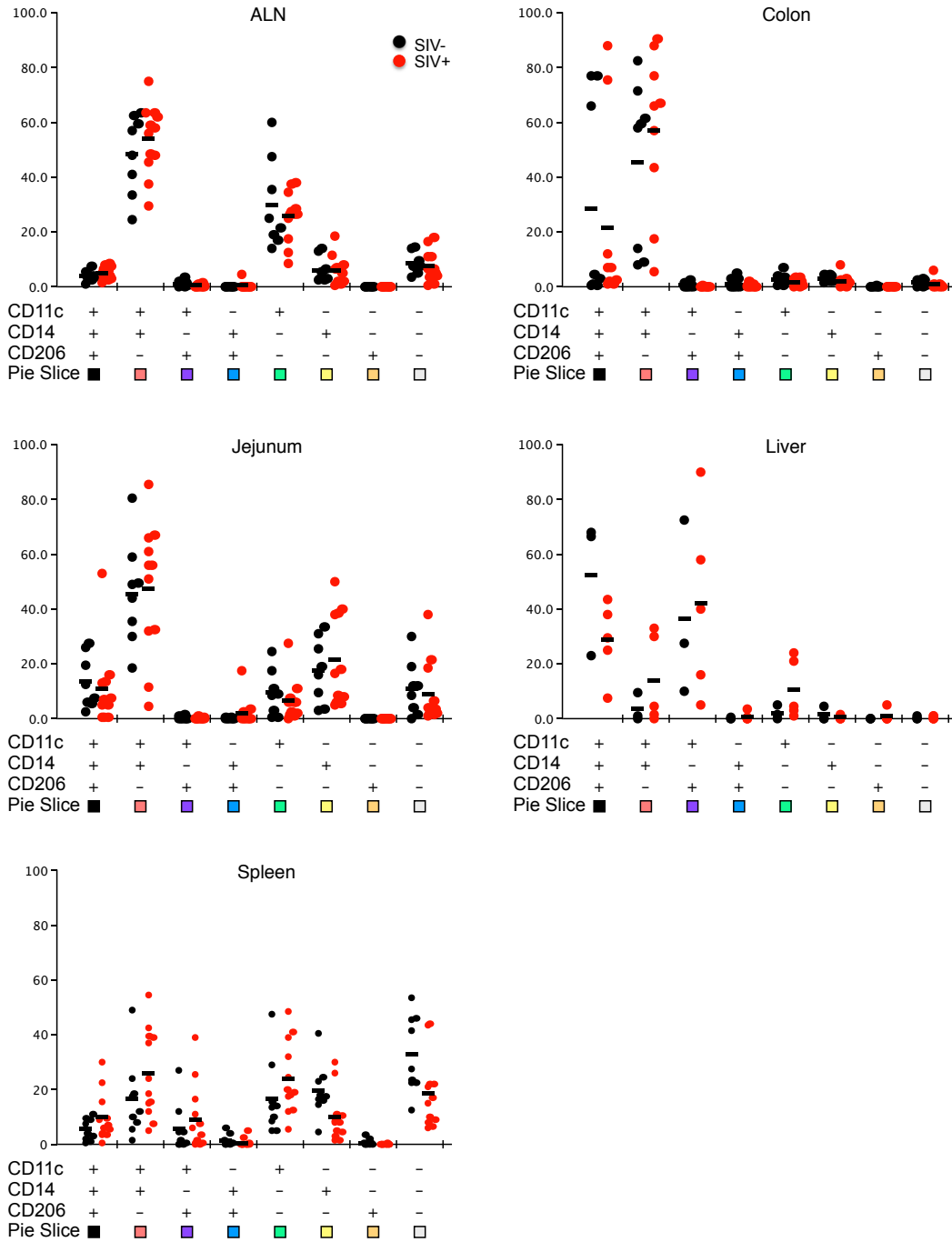
Supplementary Table 4B

p-values Comparing Functionality Between Stimulus Conditions				
	LPS	BS-PGN	EC-PGN	Tissue:
LPS		NS	NS	ALN
		NS	NS	Colon
		NS	NS	Jejunum
		NS	NS	Liver
		NS	0.1412	Spleen
BS-PGN	NS		NS	ALN
	NS		NS	Colon
	NS		NS	Jejunum
	NS		NS	Liver
	NS		0.1939	Spleen
EC-PGN	NS	NS		ALN
	NS	NS		Colon
	NS	NS		Jejunum
	NS	NS		Liver
	0.1412	0.1939		Spleen

Supplemental Table 4. p-Values Comparing Stimulated Macrophage Cytokine Expression.

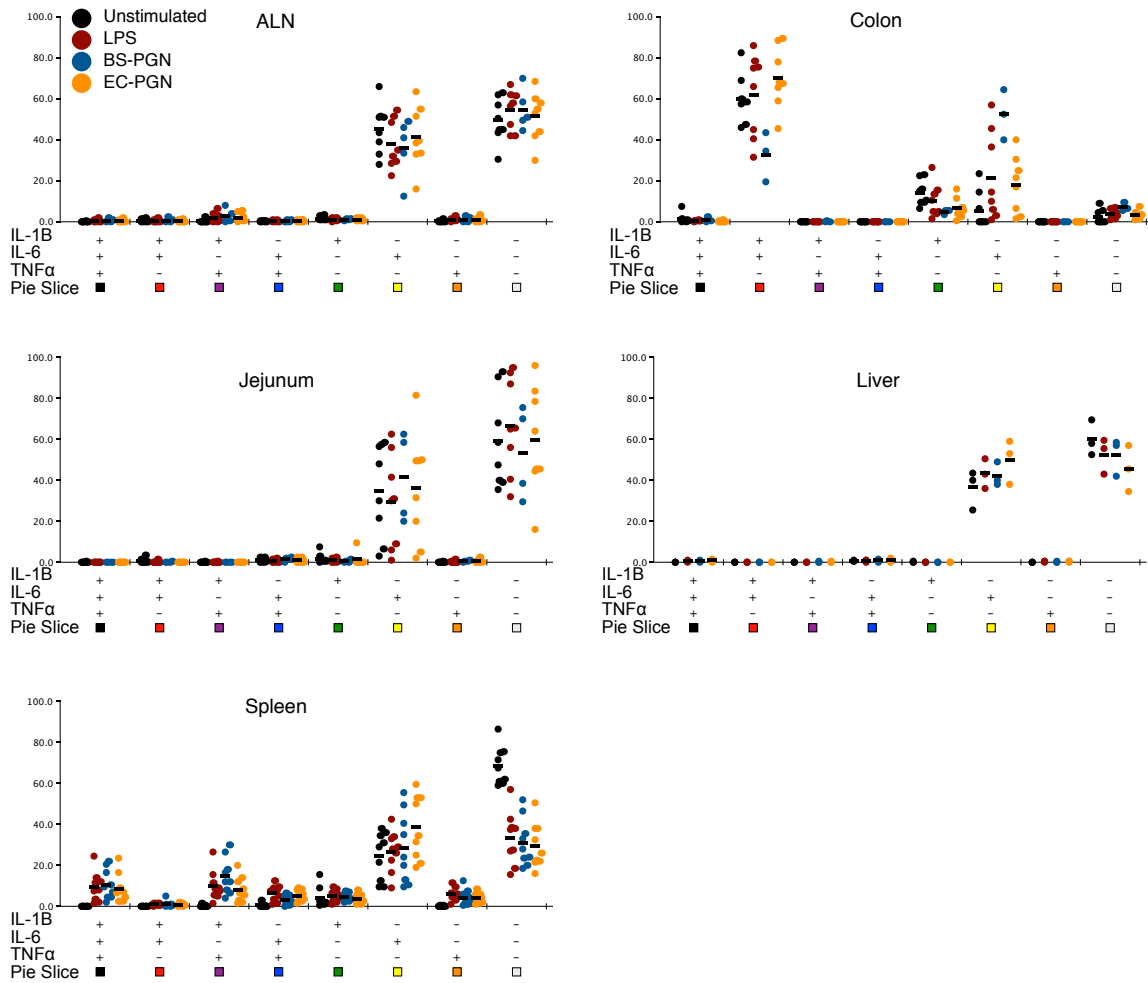
A. p-Values comparing the absolute percent of any cytokine (IL-1 β , IL-6 or TNF α) expression among similar stimulation conditions, between macrophages from disparate tissues as shown in Figure 3D. Significance assessed by unpaired, two-tailed t-test. **B.** p-Values comparing the absolute percent of any cytokine expression among similar tissue macrophages, between different stimuli. Significance assessed by paired, two-tailed t-test.

All Macrophages (Unstimulated)



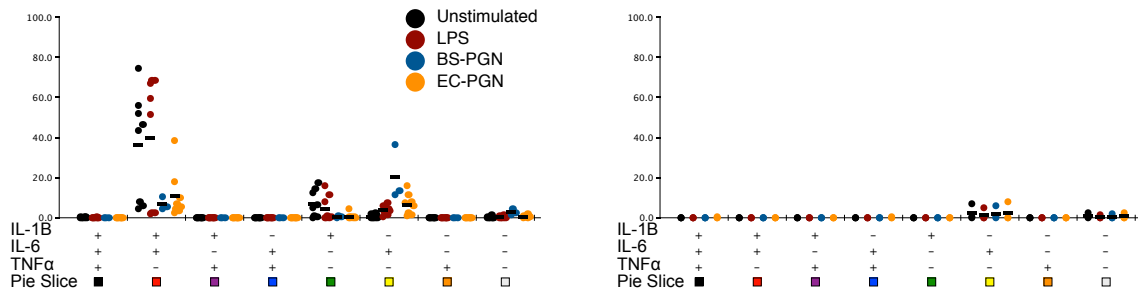
Supplementary Figure 1 – Absolute values of phenotypic subsets among unstimulated, bulk macrophages from SIV-uninfected animals. Absolute percent of unstimulated macrophages from SIV-uninfected (black circles) and SIV-infected (red circles) animals expressing the indicated phenotype, in reference to relative expression pie charts as shown in Figure 2B. Line represents mean of population.

All Macrophages (SIV-)

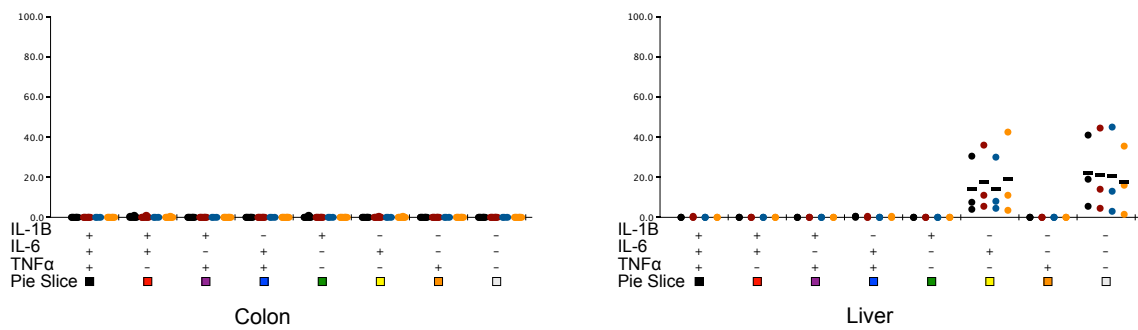


Supplementary Figure 2 – Absolute values of functional subsets among stimulated, bulk macrophages from SIV-uninfected animals. Absolute percent of unstimulated (black circles), LPS-stimulated (red circles), BS-PGN stimulated (blue circles) or EC-PGN stimulated (orange circles) macrophages from SIV-uninfected animals expressing the indicated cytokine profile, in reference to relative expression pie charts as shown in Figure 3E. Line represents mean of population.

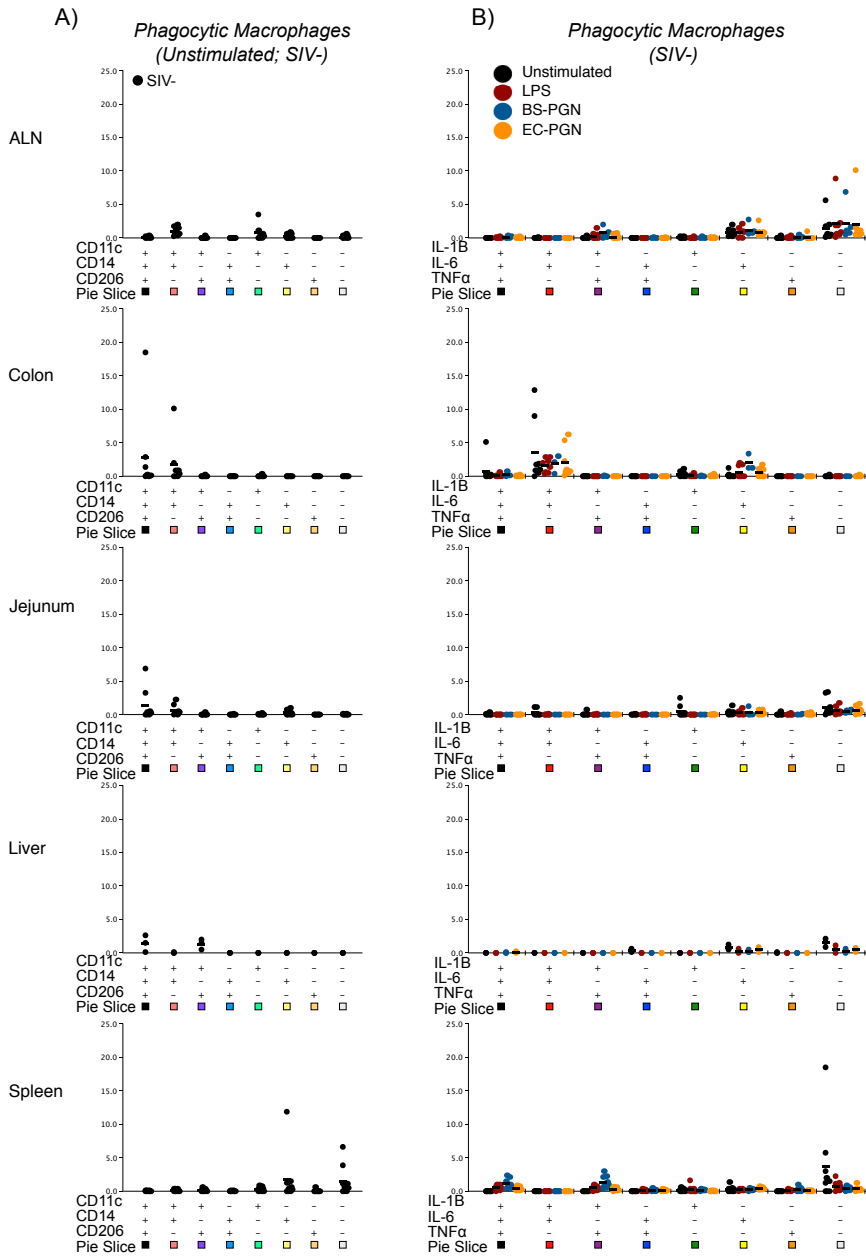
CD11c+CD14+CD206- Macrophages (SIV-)



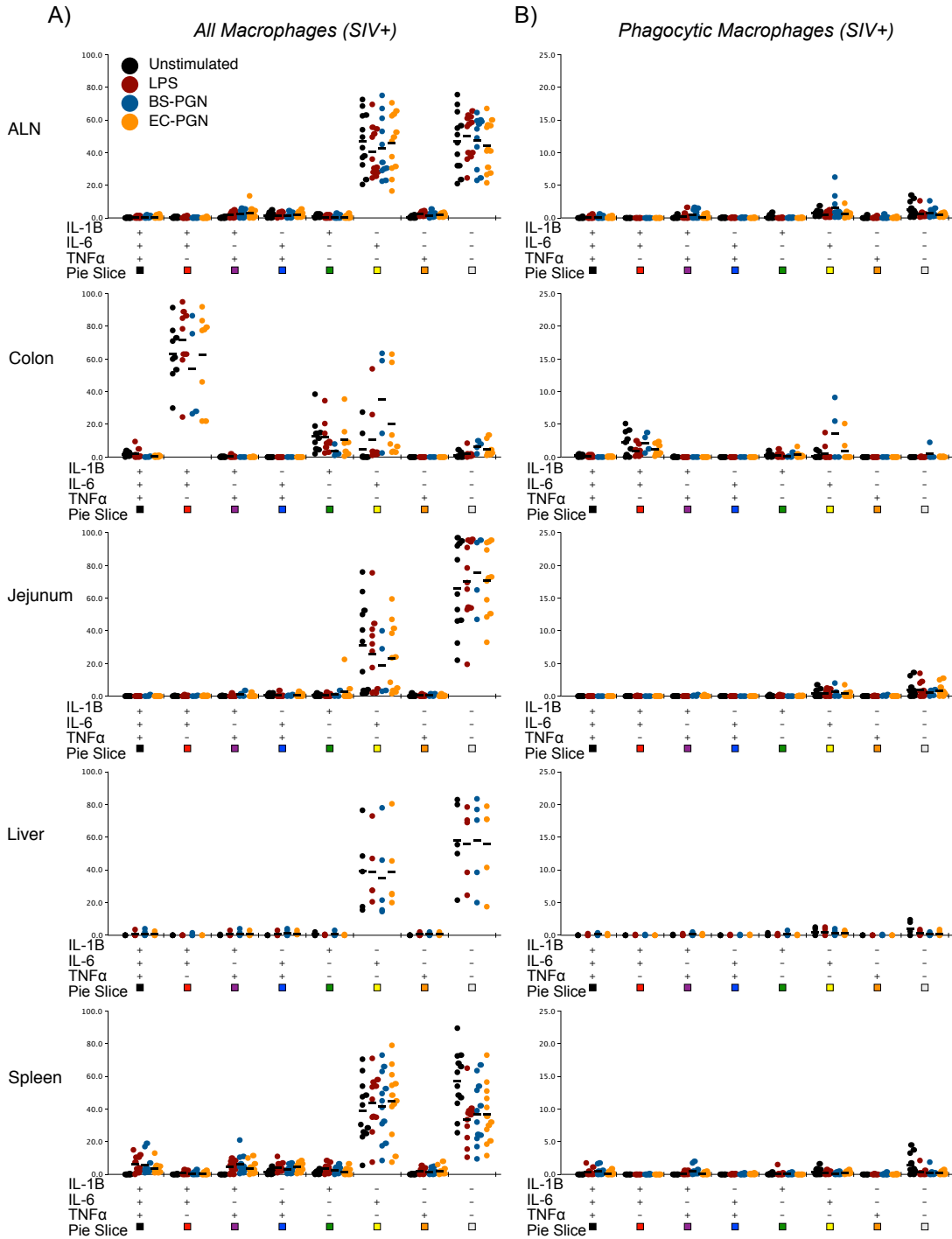
CD11c+CD14-CD206+ Macrophages (SIV-)



Supplementary Figure 3 - Absolute values of functional subsets among stimulated, subset macrophages from SIV-uninfected animals. Absolute percent CD11c+CD14+CD206- (top) or CD11c+CD14-CD206+ (bottom) unstimulated (black circles), LPS-stimulated (red circles), BS-PGN stimulated (blue circles) or EC-PGN stimulated (orange circles) macrophages expressing the indicated cytokine profile of total macrophages from SIV-uninfected animals, in reference to relative expression pie charts as shown in Figure 4. Line represents mean of population.



Supplementary Figure 4 – Absolute values of phenotypic and functional subsets among stimulated, phagocytic macrophages from SIV-uninfected animals. A. Absolute percent unstimulated, phagocytic macrophages expressing the indicated phenotype of total macrophages from SIV-uninfected (black circles) animals, in reference to relative expression pie charts as shown in Figure 5B. B. Absolute percent unstimulated (black circles), LPS-stimulated (red circles), BS-PGN stimulated (blue circles) or EC-PGN stimulated (orange circles) phagocytic macrophages expressing the indicated cytokine profile of total macrophages from SIV-uninfected animals, in reference to relative expression pie charts as shown in Figure 5C. Line represents mean of population.



Supplementary Figure 5 - Absolute values of functional subsets among stimulated, bulk and phagocytic macrophages from SIV-infected animals. Absolute percent unstimulated (black circles), LPS-stimulated (red circles), BS-PGN stimulated (blue circles) or EC-PGN stimulated (orange circles) macrophages (A) or phagocytic macrophages (B) expressing the indicated cytokine profile of total macrophages from SIV-infected animals, in reference to relative expression pie charts as shown in Figures 6A and B, respectively. Line represents mean of population.

