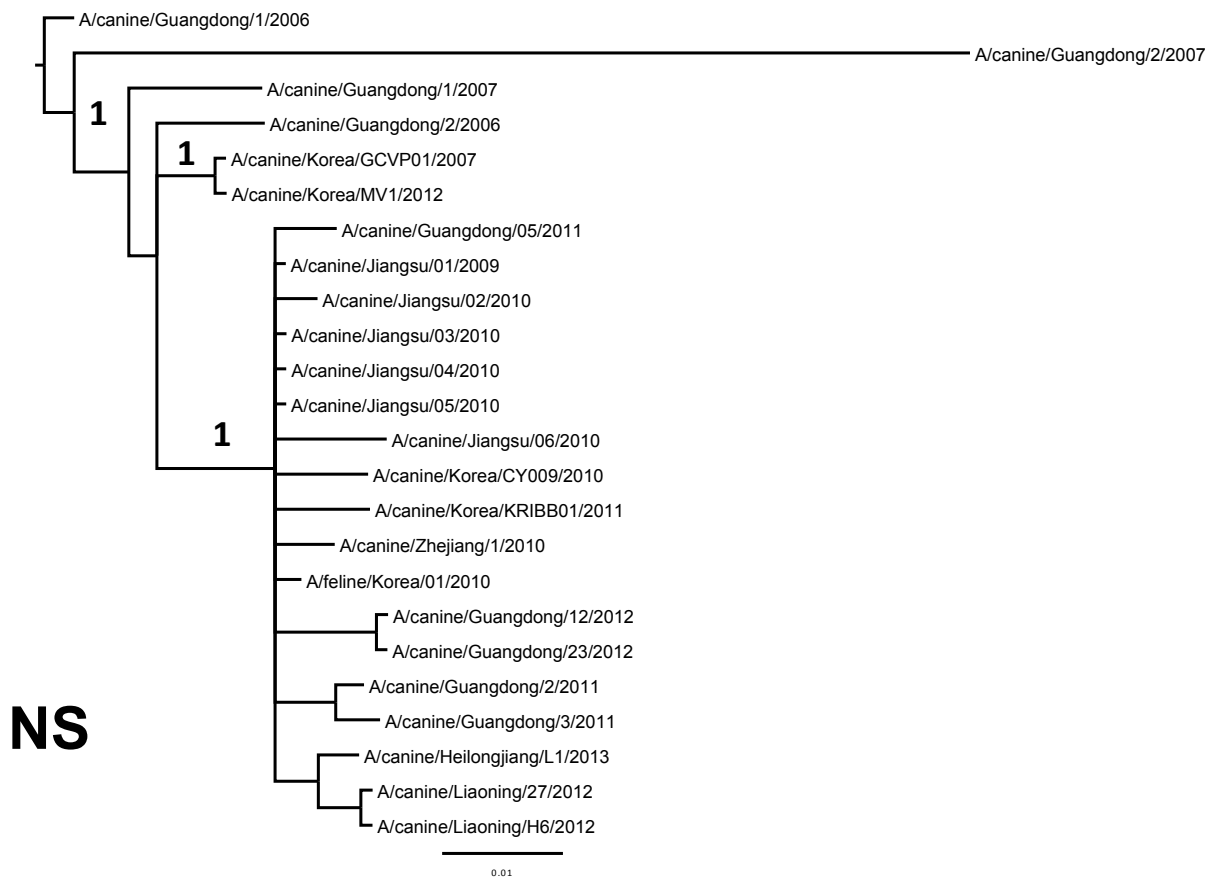




Figure S1. Geographical locations of CIV isolates.



NS

Figure S2. Phylogenetic tree of 24 NS sequences derived from H3N2 CIVs collected between 2006 and 2013. The tree was inferred using MrBayes. Posterior probability values ≥ 0.95 are shown.

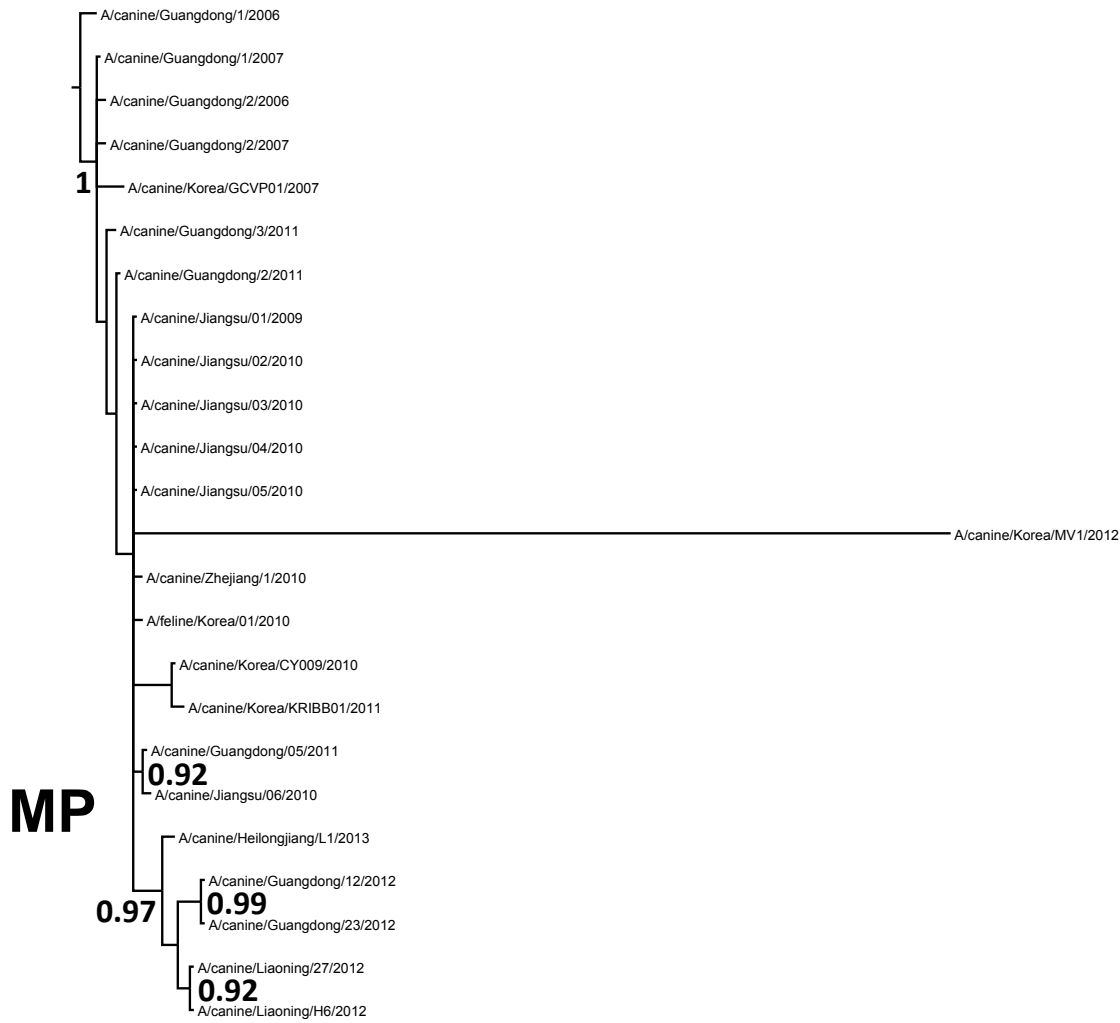


Figure S3. Phylogenetic tree of 24 MP sequences derived from H3N2 CIVs collected between 2006 and 2013. The tree was inferred using MrBayes. Posterior probability values ≥ 0.95 are shown.