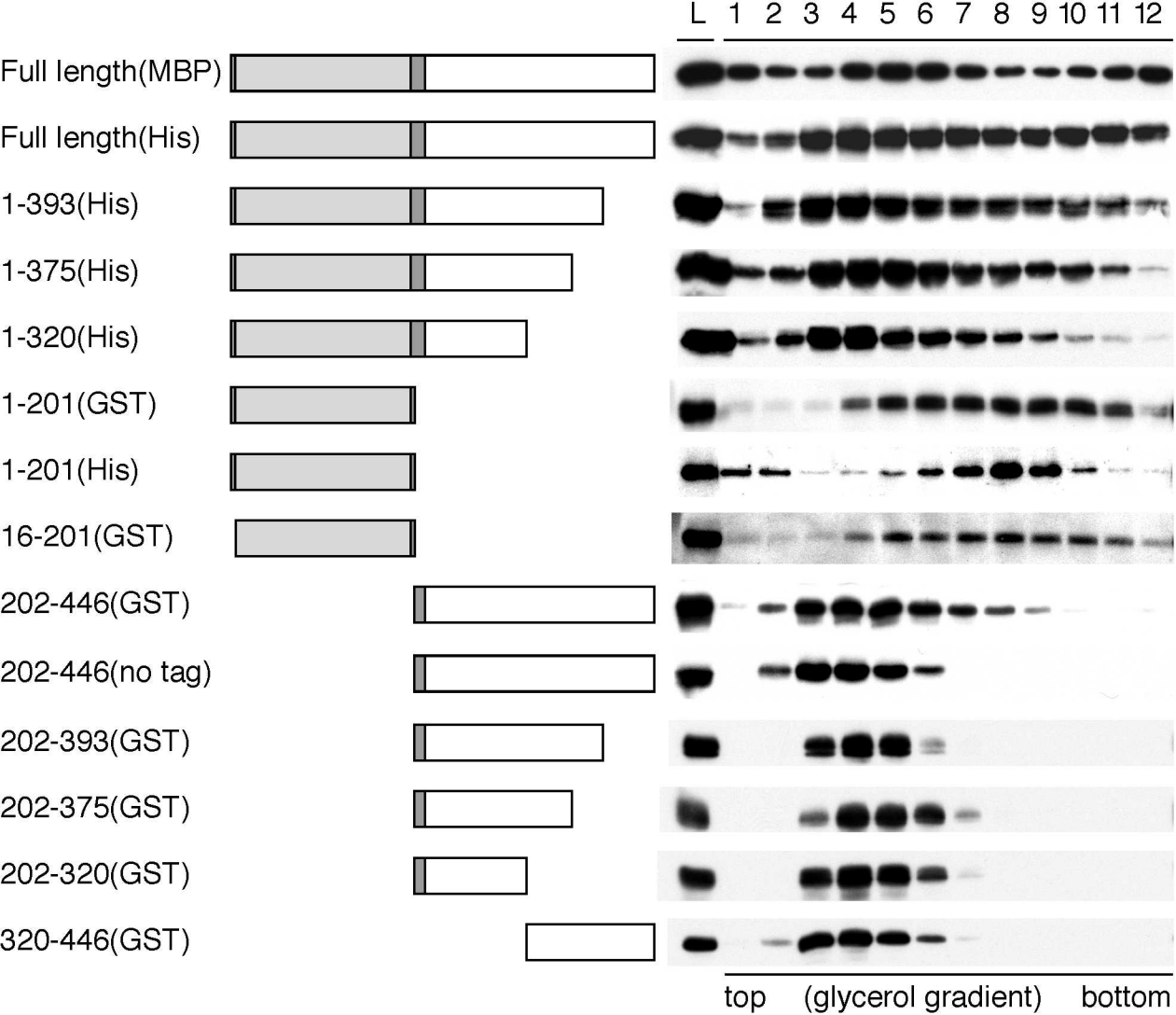


## **Supplemental figures**

### **Sup Fig. 1. Oligomerization of GRASP65 constructs.**

Purified GRASP65 constructs were sedimented in glycerol gradients and fractions analyzed by Western blotting. Note that all constructs containing the GRASP domain sedimented more rapidly than those that did not. L=10% of the load.



Sup Fig 1