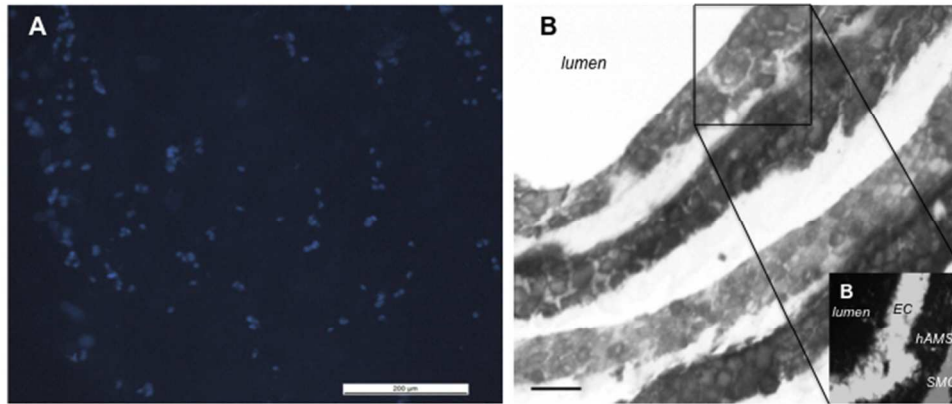


Supplementary Figure



Supplementary Figure. EC monoculture and co-culture on the hAMS. After decellularization, sheets of hAM were seeded with endothelial cells enzymatically isolated from human umbilical veins (EC) at a density of 600 cells/mm². Two hours post seeding with EC were shown to adhere on the hAMS stromal surface as seen by DAPI stained cell nuclei (A), SMC and EC co-cultures were successfully performed over a week time period, displaying distinct growth of EC on the basement membrane and SMC on the stromal side of the rolled construct over a week time period (B). Scale bar A= 200 μm B= 50 μm.
254x190mm (72 x 72 DPI)