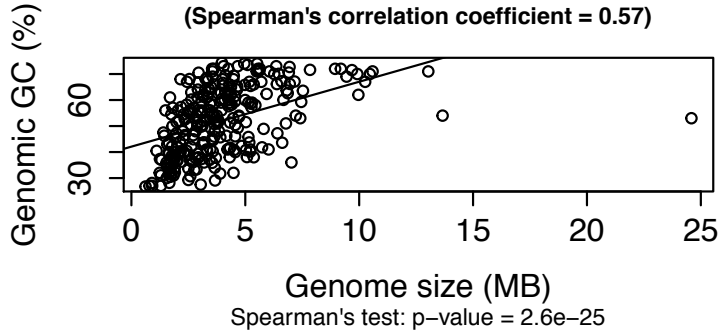
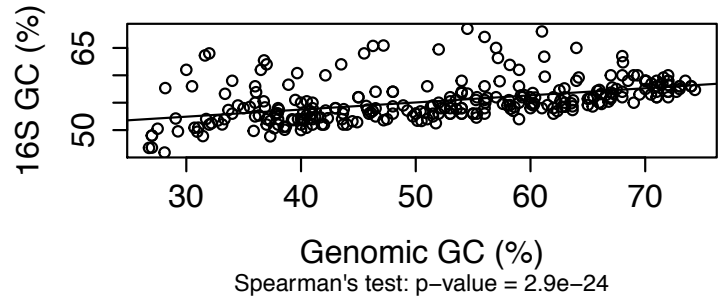


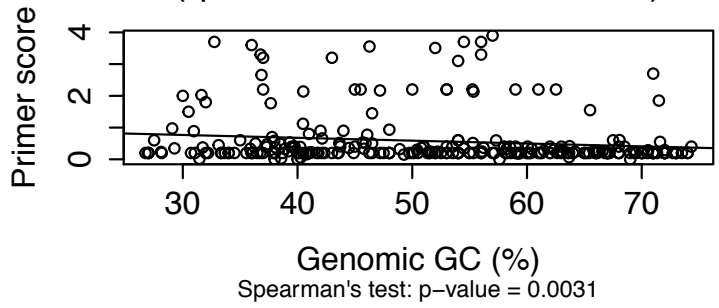
Genomic GC vs. Genome size on family level
(Spearman's correlation coefficient = 0.57)



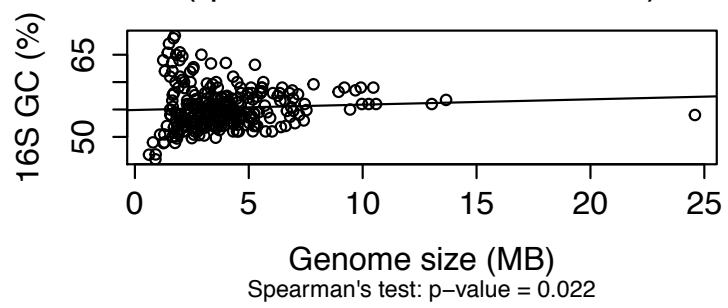
16S GC vs. Genomic GC on family level
(Spearman's correlation coefficient = 0.56)



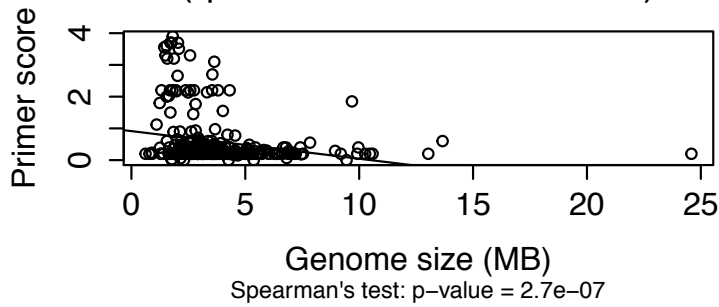
Primer score vs. Genomic GC on family level
(Spearman's correlation coefficient = -0.18)



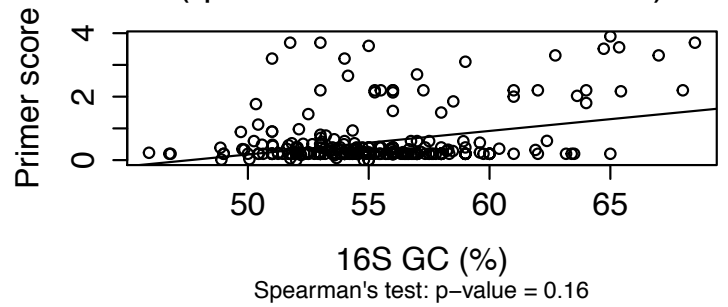
16S GC vs. Genome size on family level
(Spearman's correlation coefficient = 0.14)



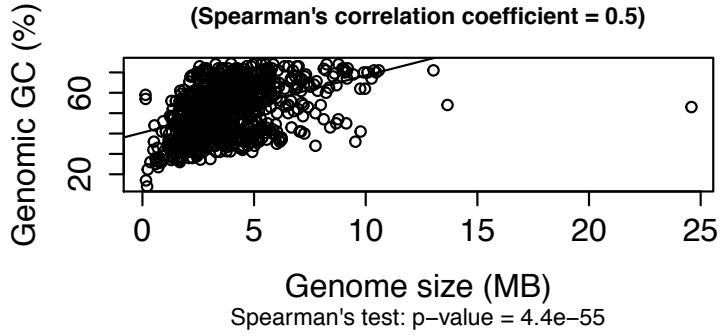
Primer score vs. Genome size on family level
(Spearman's correlation coefficient = -0.3)



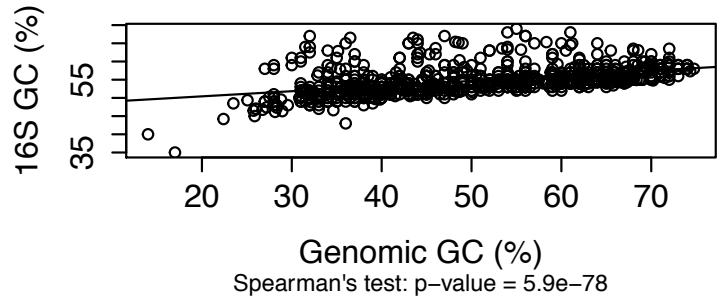
Primer score vs. 16S GC on family level
(Spearman's correlation coefficient = 0.085)



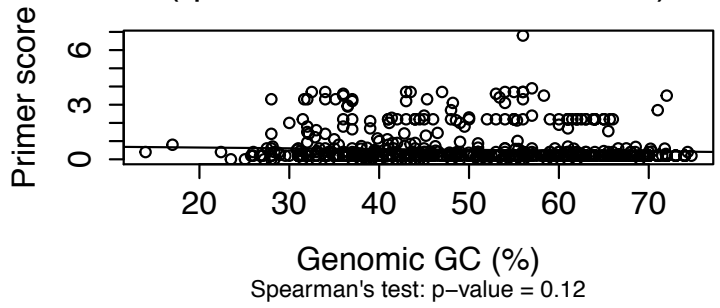
Genomic GC vs. Genome size on genus level
(Spearman's correlation coefficient = 0.5)



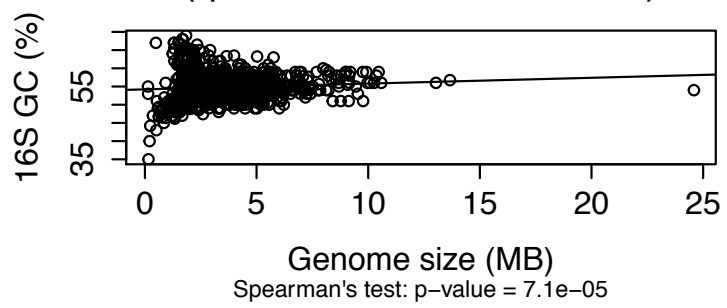
16S GC vs. Genomic GC on genus level
(Spearman's correlation coefficient = 0.58)



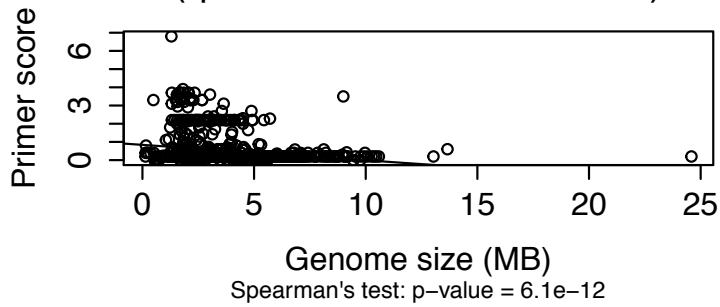
Primer score vs. Genomic GC on genus level
(Spearman's correlation coefficient = -0.053)



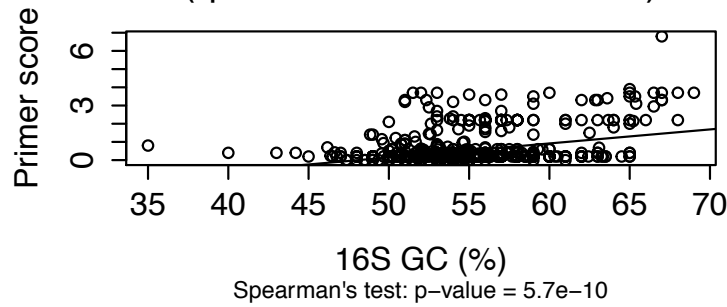
16S GC vs. Genome size on genus level
(Spearman's correlation coefficient = 0.14)



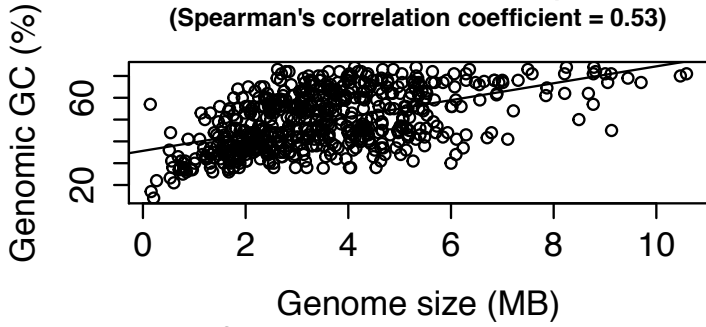
Primer score vs. Genome size on genus level
(Spearman's correlation coefficient = -0.23)



Primer score vs. 16S GC on genus level
(Spearman's correlation coefficient = 0.21)

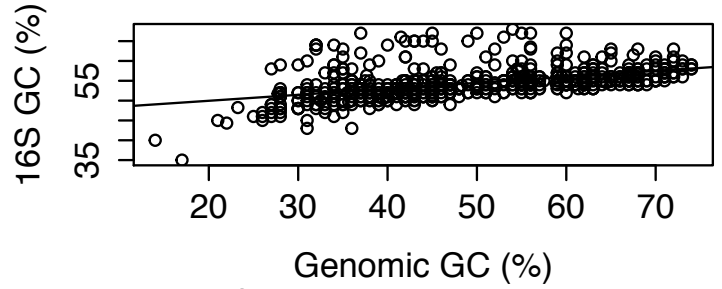


Genomic GC vs. Genome size on species level
(Spearman's correlation coefficient = 0.53)



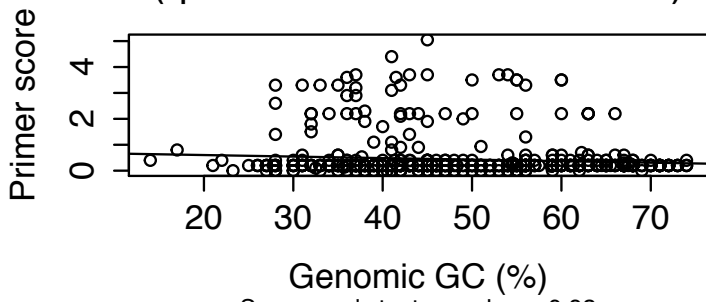
Spearman's test: p-value = $1.2e-44$

16S GC vs. Genomic GC on species level
(Spearman's correlation coefficient = 0.59)



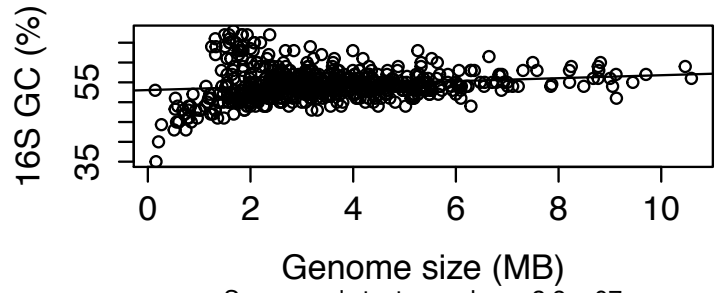
Spearman's test: p-value = $8e-59$

Primer score vs. Genomic GC on species level
(Spearman's correlation coefficient = 0.0039)



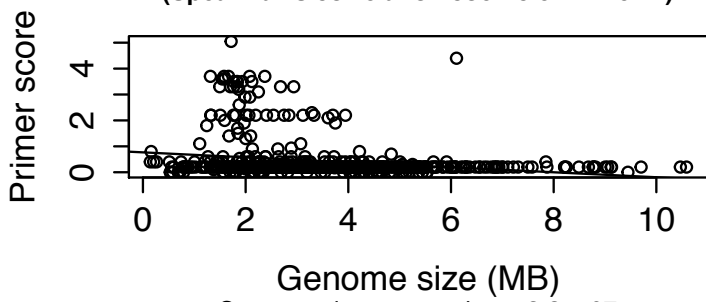
Spearman's test: p-value = 0.92

16S GC vs. Genome size on species level
(Spearman's correlation coefficient = 0.21)



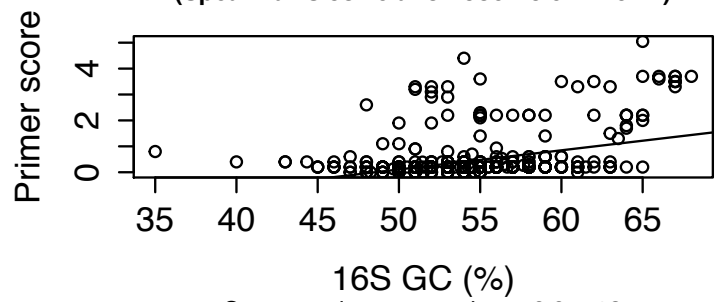
Spearman's test: p-value = $2.8e-07$

Primer score vs. Genome size on species level
(Spearman's correlation coefficient = -0.21)



Spearman's test: p-value = $3.2e-07$

Primer score vs. 16S GC on species level
(Spearman's correlation coefficient = 0.27)



Spearman's test: p-value = $6.9e-12$