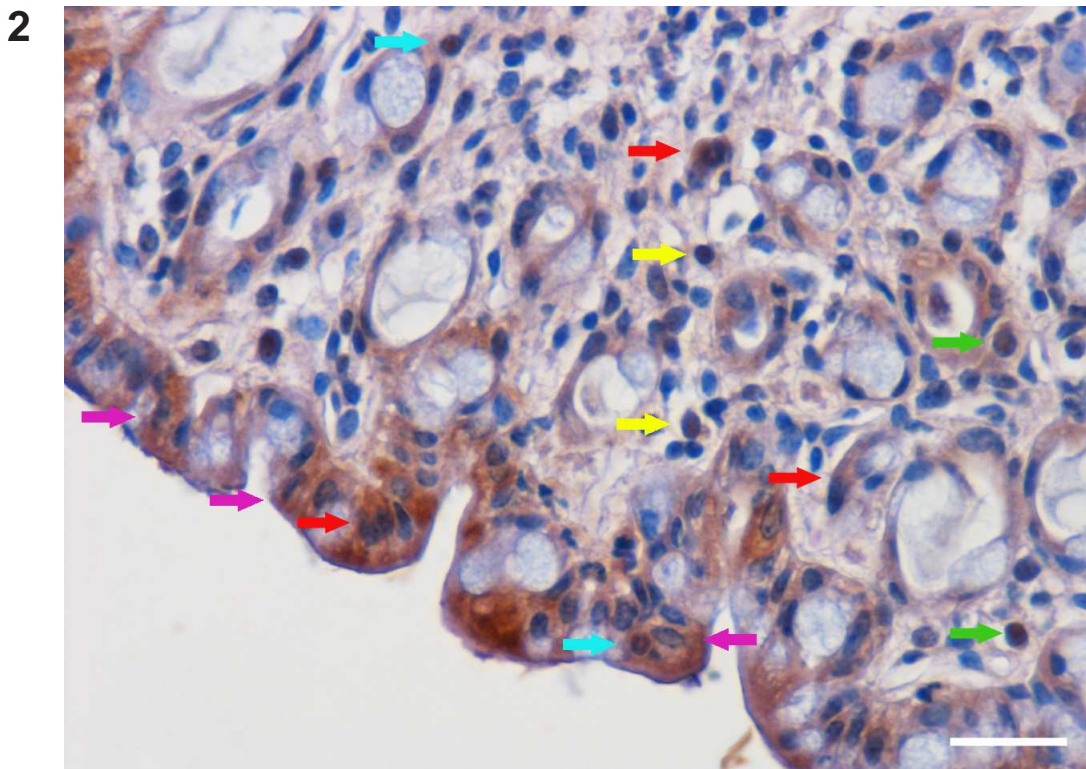
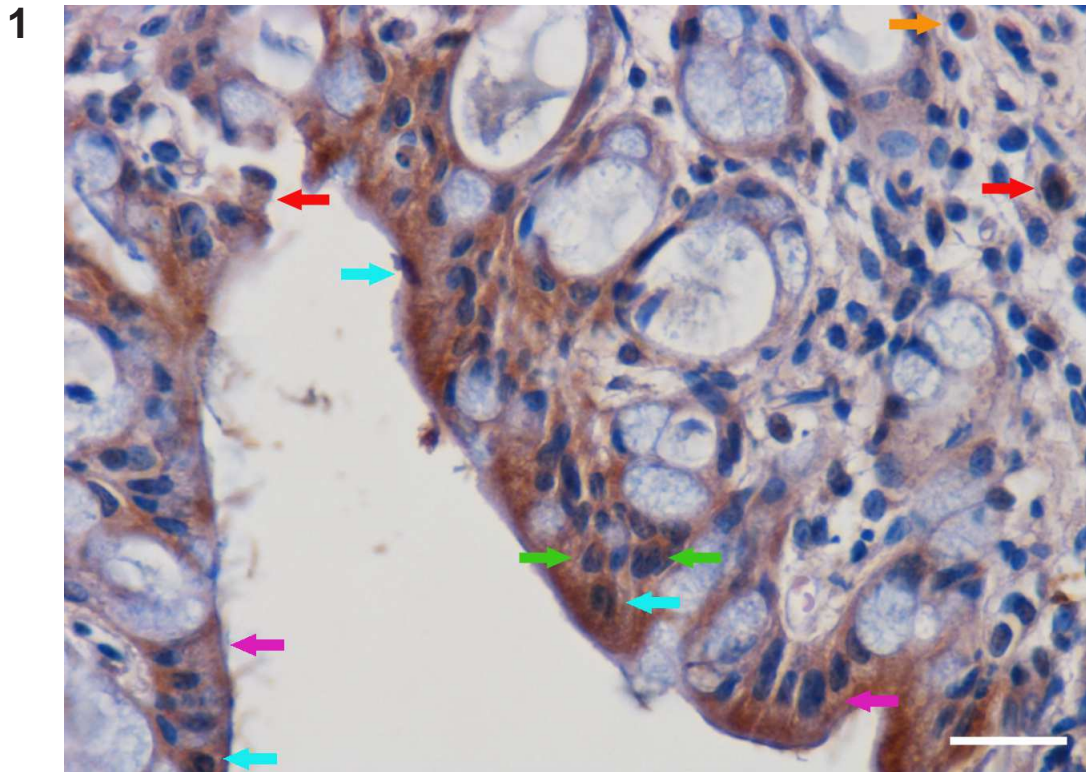
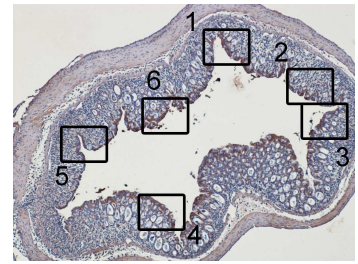


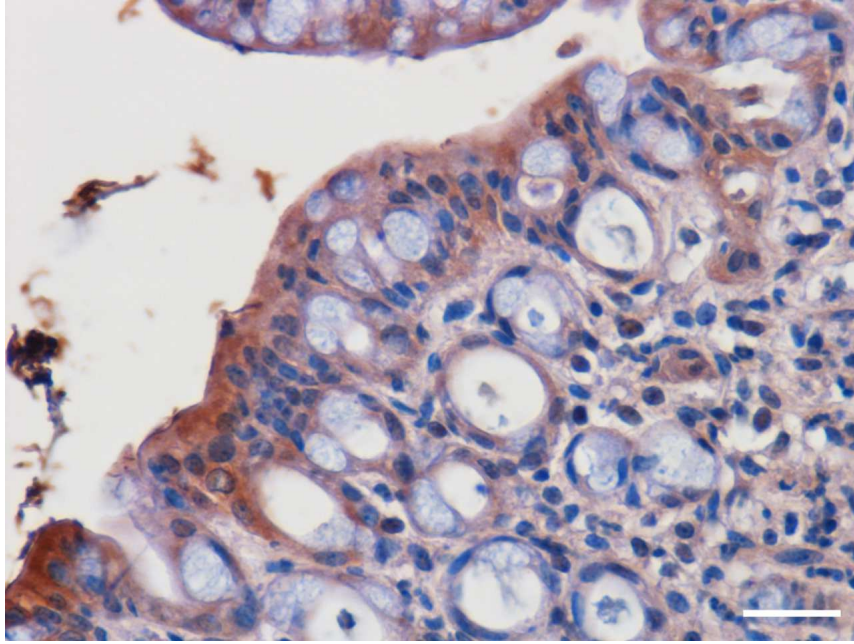
Supplementary Figure 3a

Colon Mucosa
(Gr. IV, DSS 1.5% + InvColi^{NC})

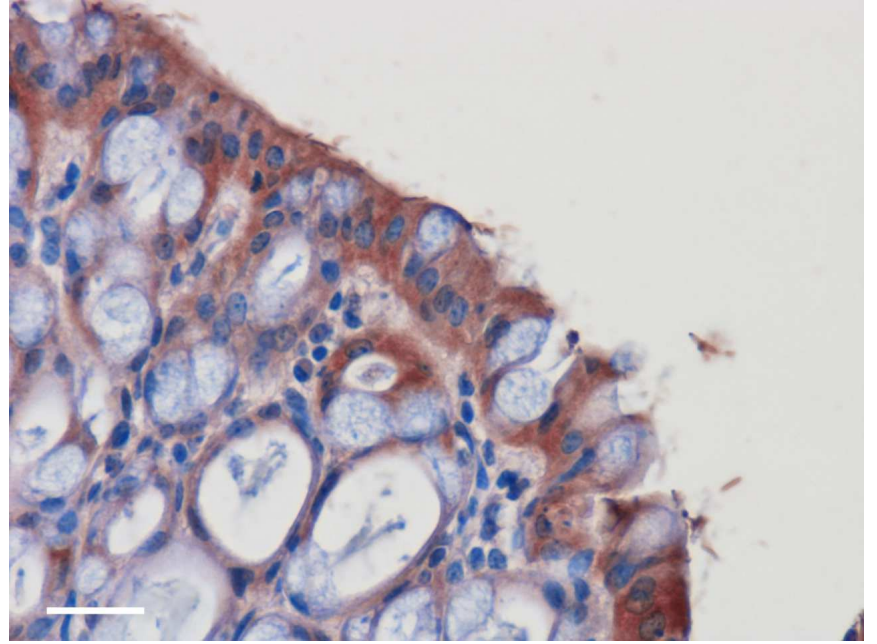
- Epithelial cell
- Granulocyte
- Monocyte/Macrophage
- Macrophage
- Lymphocyte
- Plasma cell



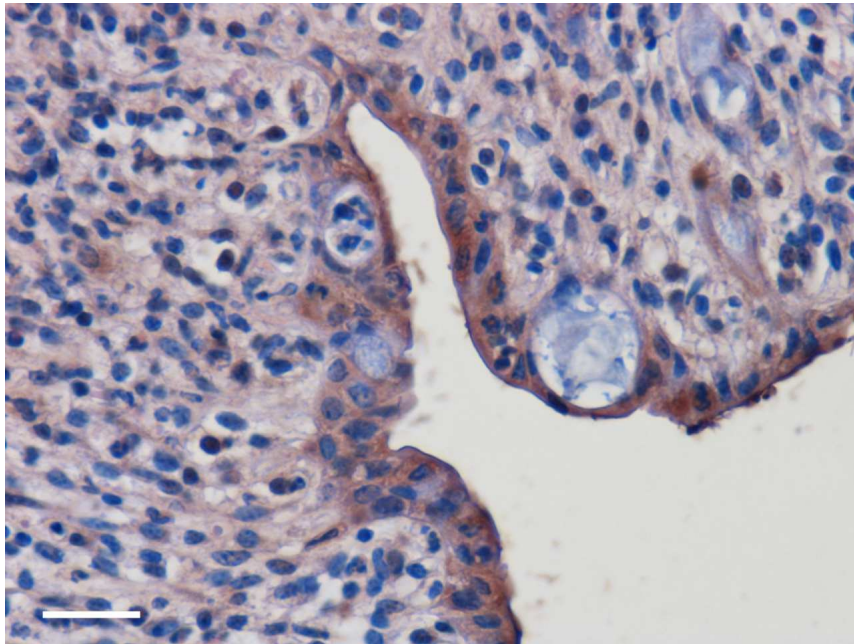
3



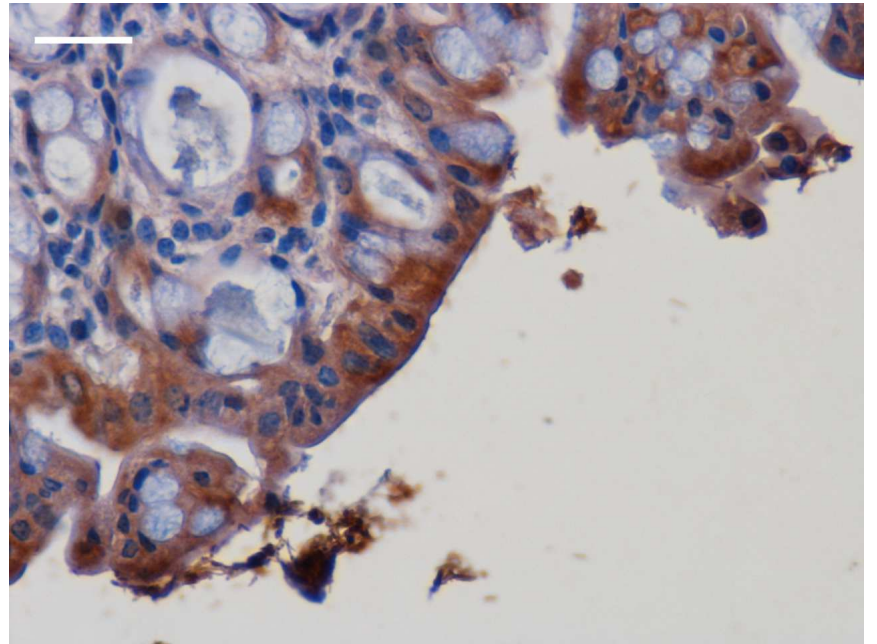
4



5

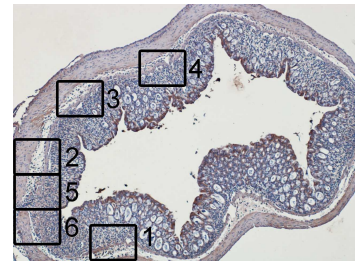


6



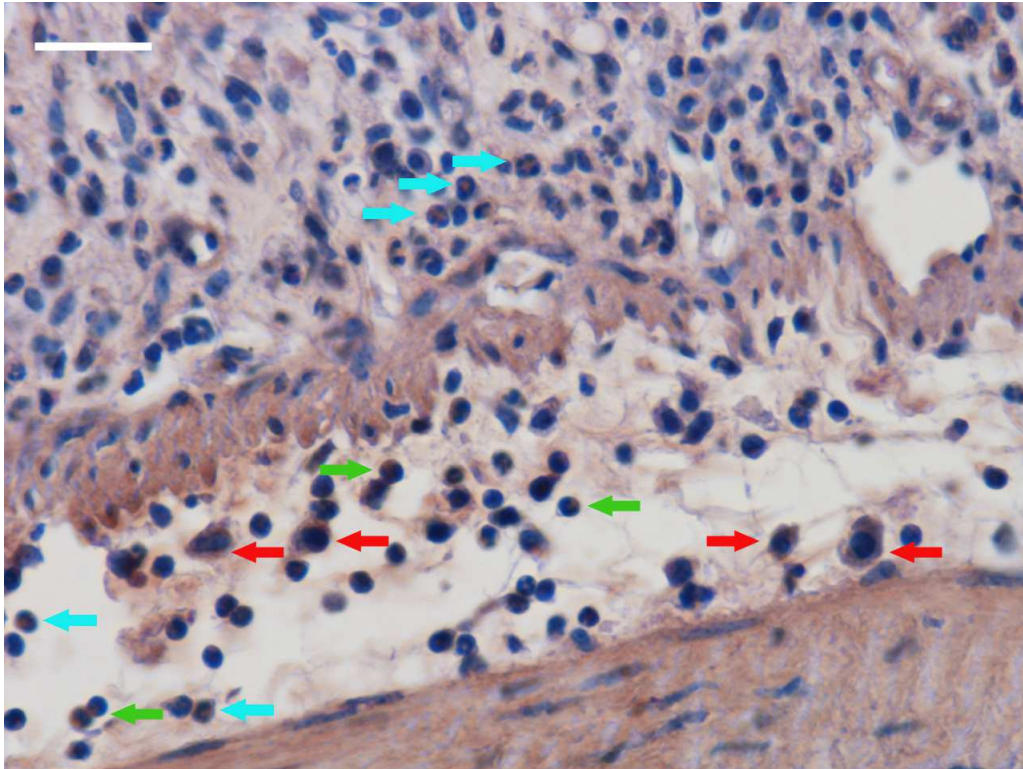
Supplementary Figure 3b

Colon Submucosa
(Gr. IV, DSS 1.5% + InvColi^{NC})

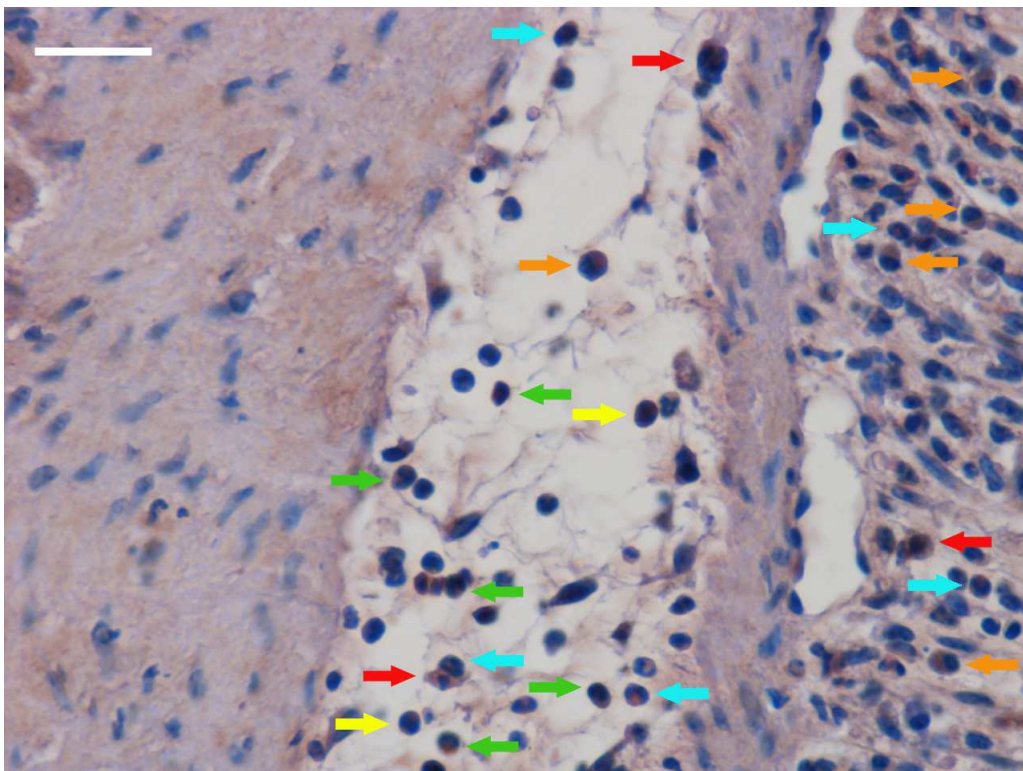


- Epithelial cell
- Granulocyte
- Monocyte/Macrophage
- Macrophage
- Lymphocyte
- Plasma cell

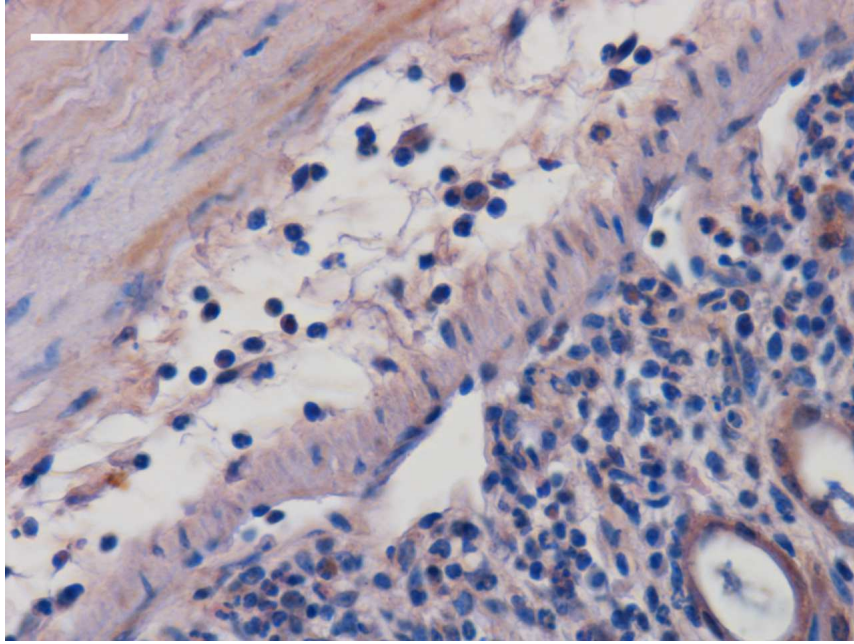
1



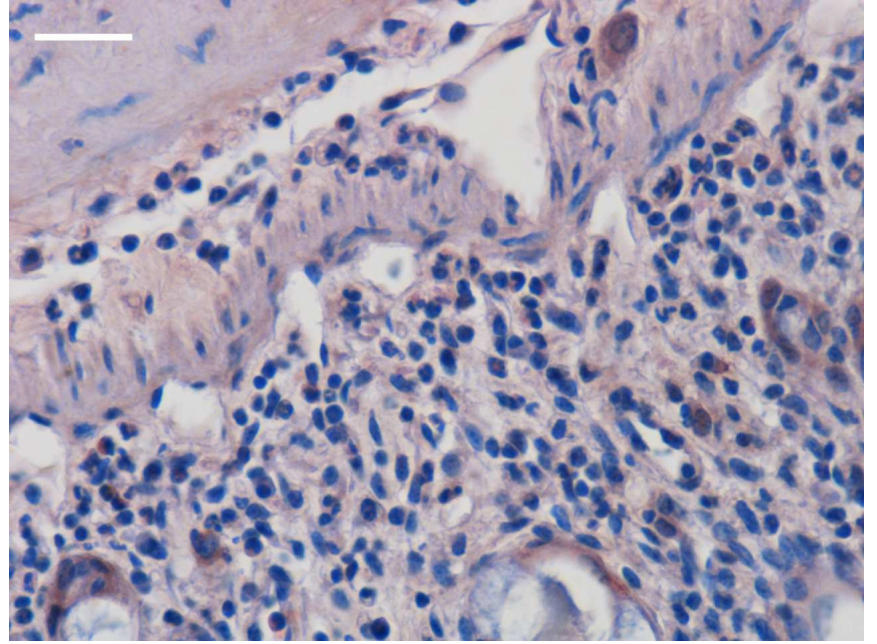
2



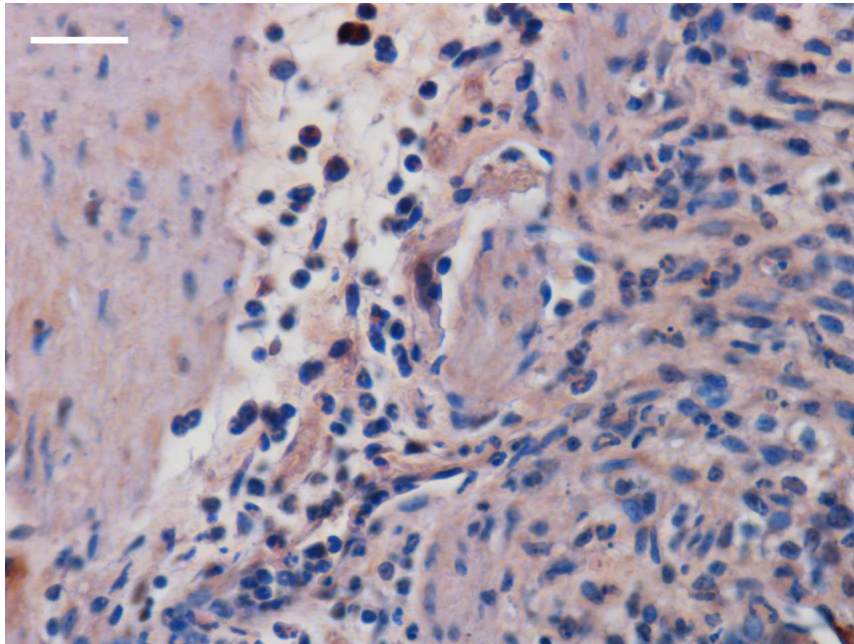
3



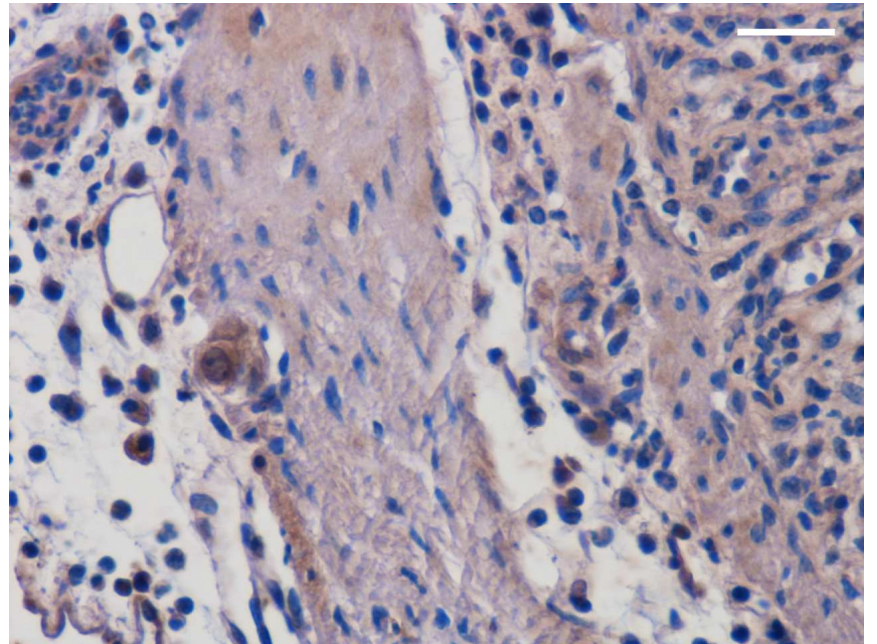
4



5



6



Supplementary Figure S3 – Colon cells express GFP after InvColi^{NC} invasion/transfection.

High-magnification images from Figure 1d, representing GFP protein expression evaluated by immunohistochemistry in a FFPE colon specimen from experimental mice group *IV* (DSS 1.5% + InvColi^{NC}). **(a)** IHC images from colon mucosa. **(b)** IHC images from colon submucosa. Scale bar = 25 μ m; \times 400 magnification. **(1,2)** Arrows indicate the different type of transfected cells expressing GFP, localized in colon mucosa or submucosa.