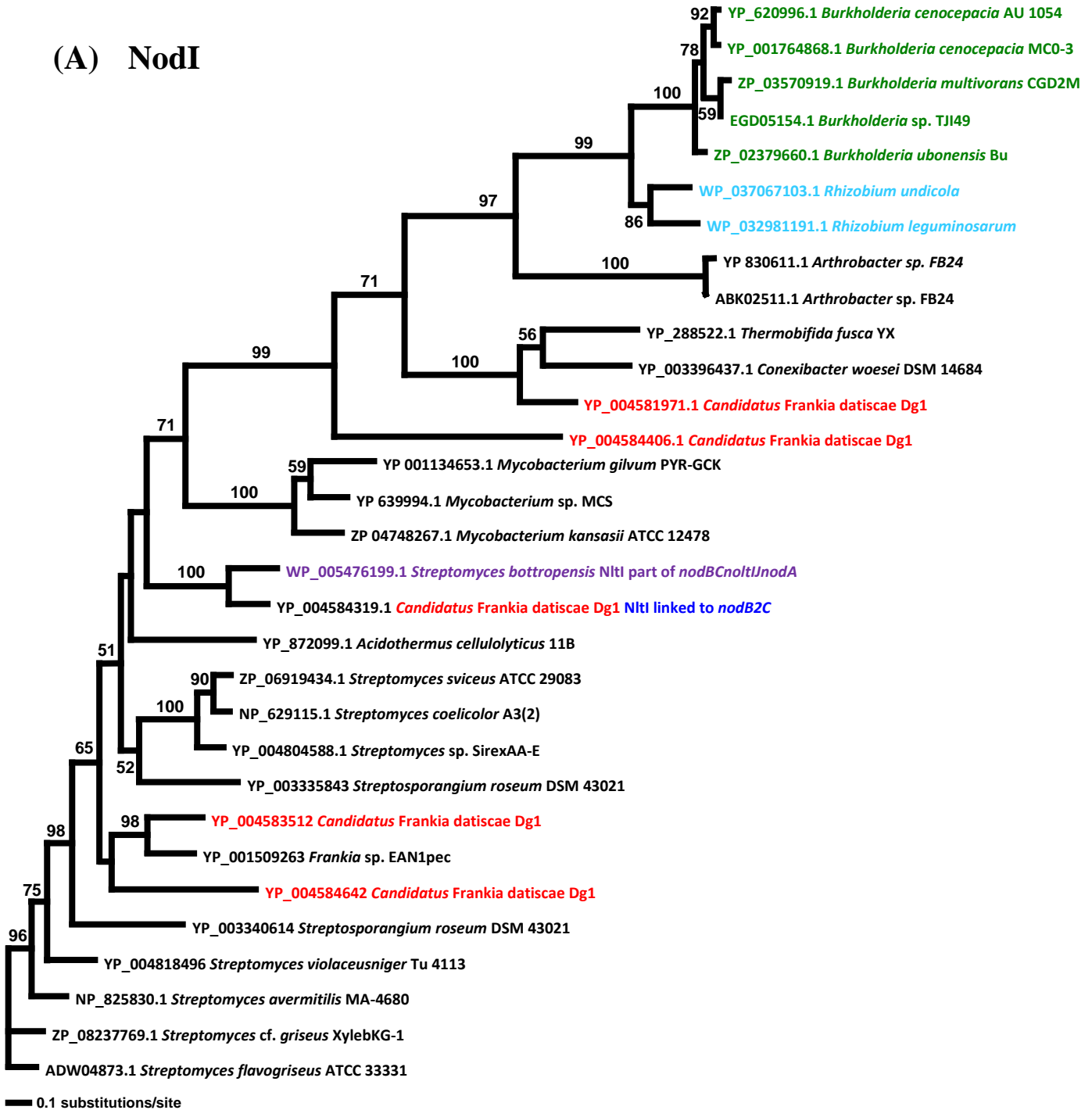


S6 Fig. Maximum Likelihood trees of (A) NodI and (B) NodJ proteins. All sequences from Dg1 are given in red. Sequences from β -proteobacteria where the rhizobial *nodIJ* genes evolved are given in green, sequences from α -proteobacteria are given in turquoise. Names of actinobacterial NltI/NltJ sequences the genes of which are part of a *nodBCnltIJ* operon are indicated in blue. The sequences from *Streptomyces bottropensis* are given in purple. All sequences used for the phylogenetic analysis are given in S6 Table.

(A) NodI



(B) NodJ

