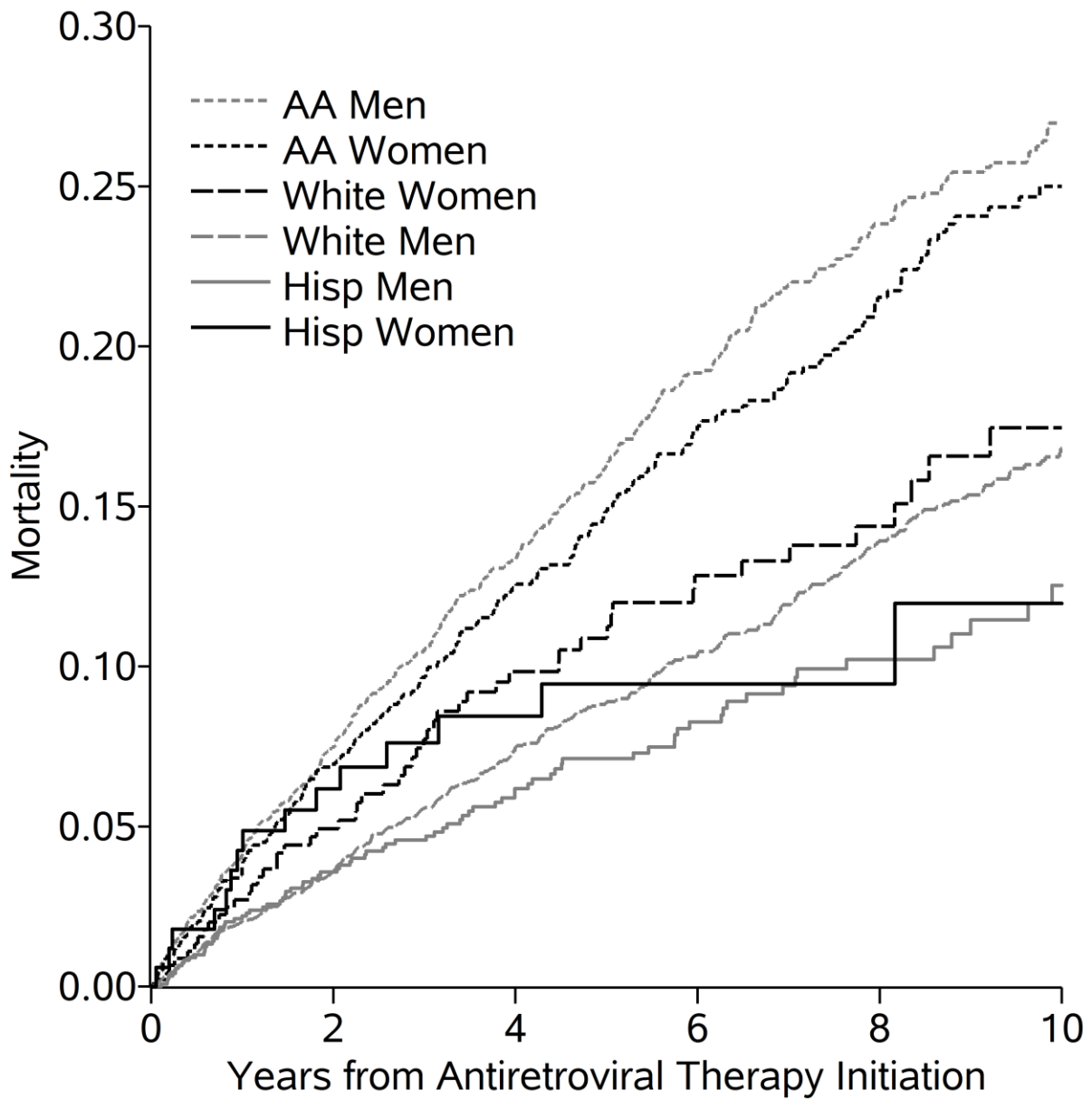


eSUPPLEMENT FIGURE 1. Log of the cumulative hazard of all-cause mortality standardized<sup>a</sup> to the total study sample by years from therapy initiation, race/ethnicity and sex, 10,017 HIV-infected adults, 1998-2011

<sup>a</sup> Standardized by baseline covariates: age at therapy initiation, CD4 count and viral load, all modeled with restricted quadratic splines (with 4 knots located at the 5th, 35th, 65th and 95th percentiles), antiretroviral therapy naivety, prior diagnosis of any AIDS-defining condition at therapy initiation, injection drug use, history of hepatitis C virus infection and study site



eSUPPLEMENT FIGURE 2: Crude all-cause mortality by years from therapy initiation, race/ethnicity and sex, 10,017 HIV-infected adults, 1998-2011