

Figure S10

MA plot

QQ plot

Older samples

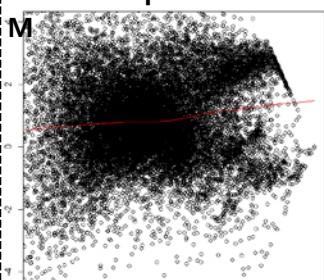
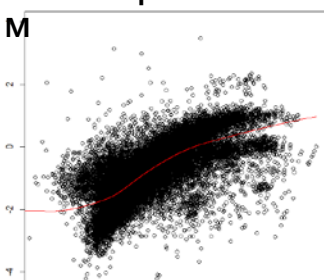
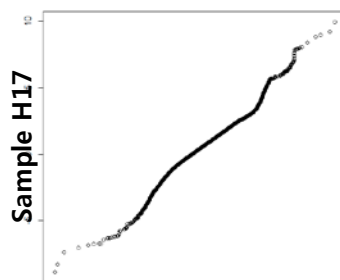
Newer samples

Older samples

Newer samples

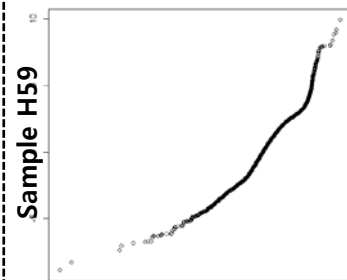
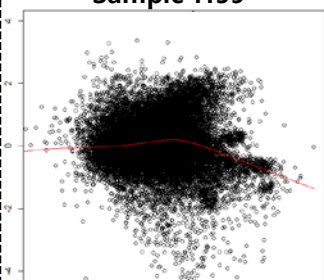
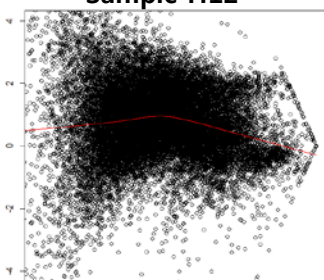
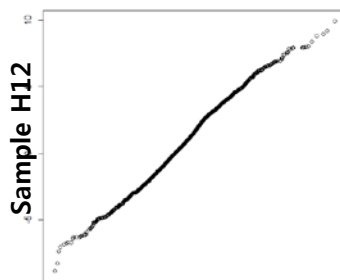
Sample H17

Sample S174



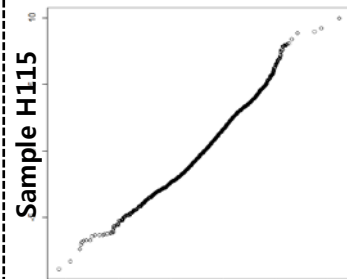
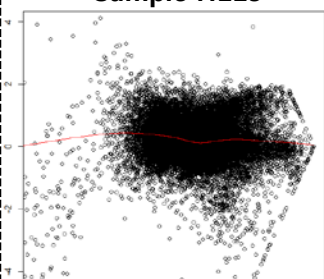
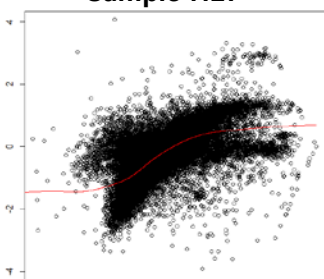
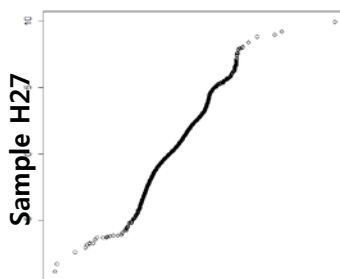
Sample H12

Sample H59



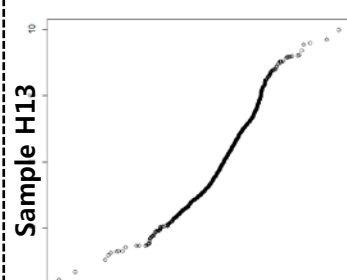
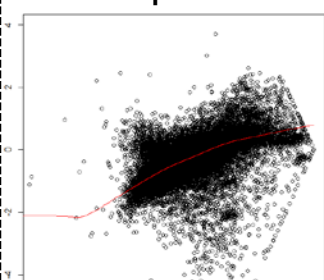
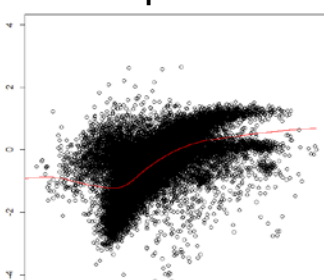
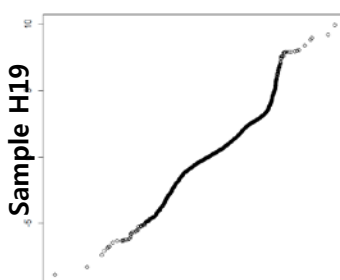
Sample H27

Sample H115



Sample H19

Sample H13



Sample H36

Sample H159

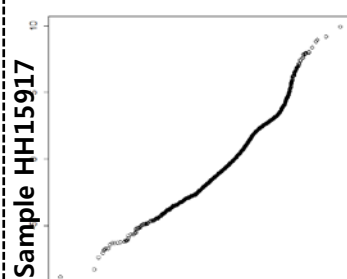
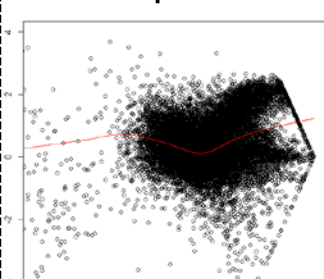
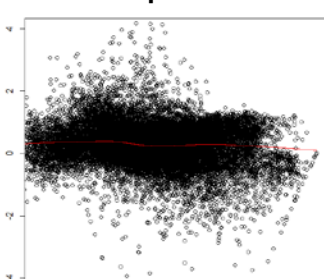
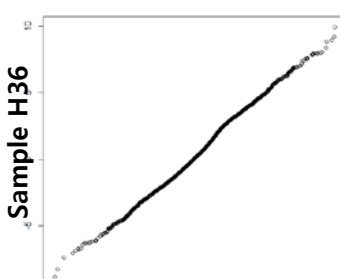


Figure S10. MA and QQ plots for assessing sample quality before normalization. The distribution of signal intensities of fluorescent probes was examined using MA and QQ plots. Older and newer samples indicate those collected before 1995 and after 2000, respectively. For QQ plot, we used the newest sample, S174, as a common reference.