

Fig S1. Adult, female *A. aegypti* immunoreactive tissues to AgGluCl IgG. (A) One antennal segment. Left: Proximal towards head, Right: Distal from head. (B) Johnston's Organ. Left: Anterior, Right: Posterior. (C) Head: P- photoreceptors. L – lamina, M – medulla, Lo - lobula; SG: supraesophageal ganglion. (D) Thoracic ganglia. Top: Dorsal, Bottom: Ventral; TG - thoracic ganglia. Red: AgGluCl; Green: Neuronal Marker; Blue: DAPI. Scale: 50 μ M.

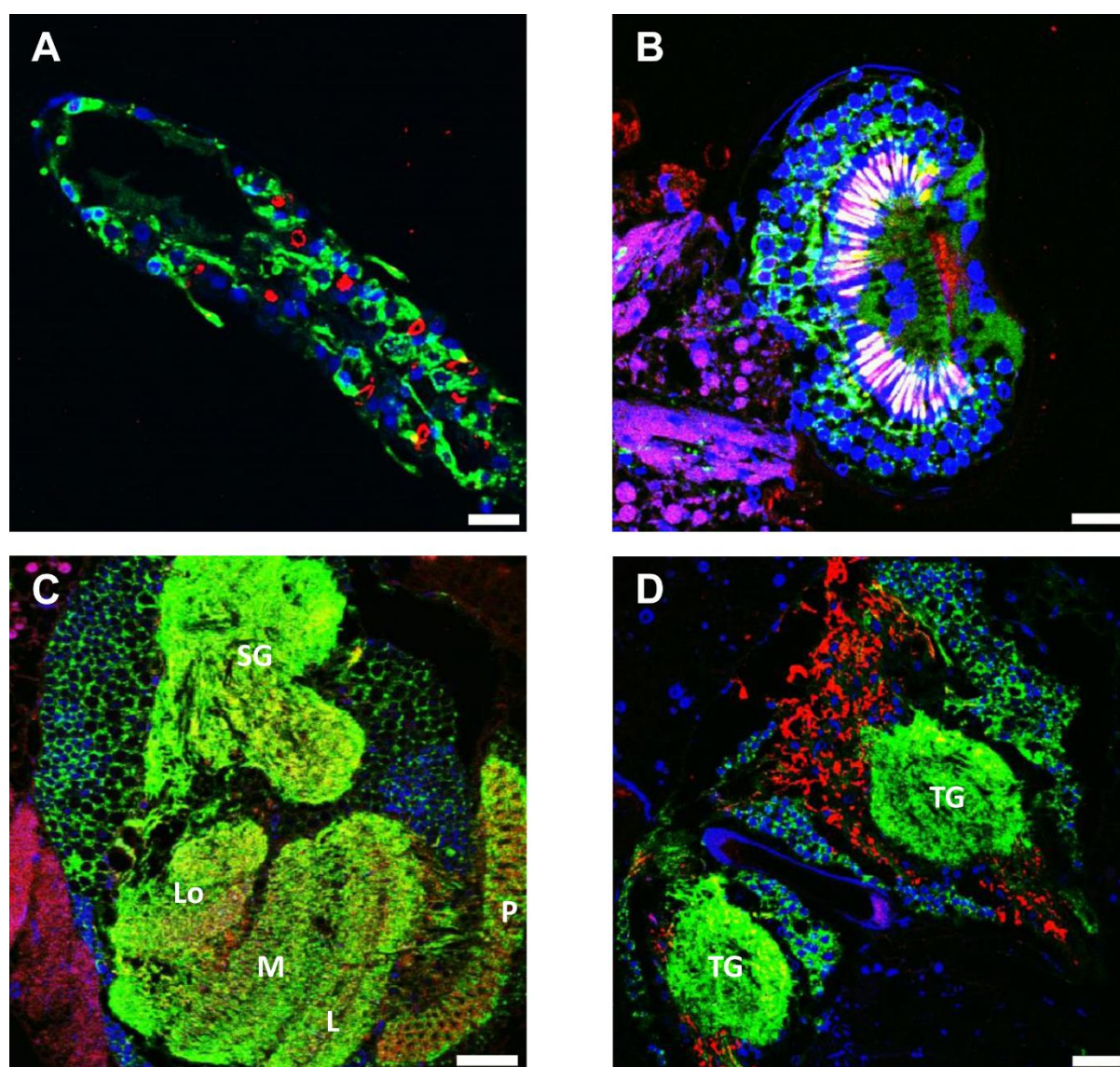


Fig S2. Adult, female *C. tarsalis* immunoreactive tissues to AgGluCl IgG. (A) Two antennal segments. Left: Distal from head, Right: Proximal towards head. (B) Johnstone's Organ. Left: Posterior, Right: Anterior. (C) Head: P- photoreceptors. L – lamina, M – medulla, Lo - lobula; SG: supraesophageal ganglion. (D) Thoracic ganglia. Top: Dorsal, Bottom: Ventral; TG - thoracic ganglia. Red: AgGluCl; Green: Neuronal Marker; Blue: DAPI. Scale: 50 μ M.