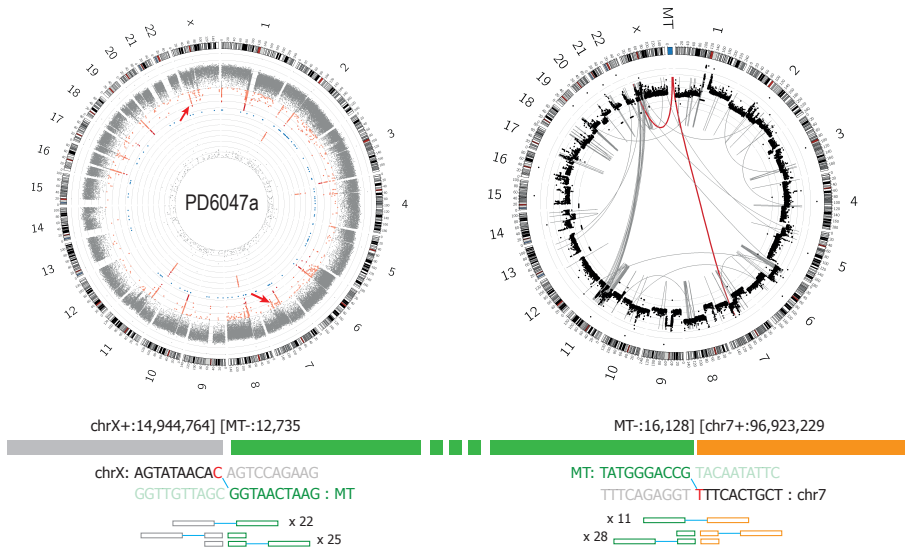
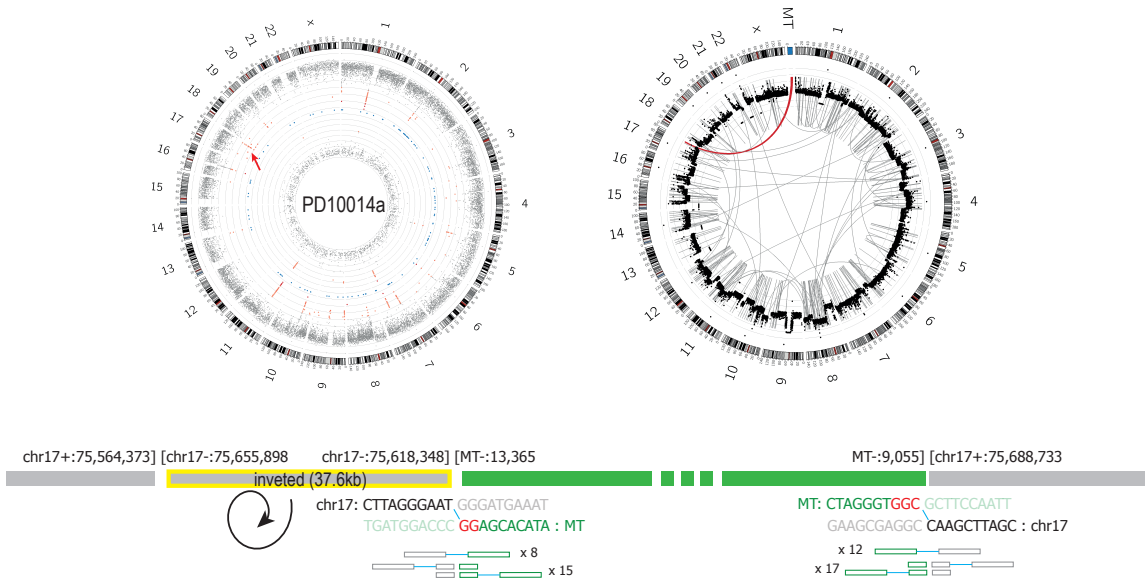


**A**



**B**



**Supplemental Figure 2 | Genome and sequence context of mtDNA nuclear transfer events.** Genome-wide discordant read clusters (first circos plot), chromosomal rearrangements (second circos plot), nucleotide-resolution mitochondrial-nuclear DNAbreakpoint junctions with microhomology (red letters) and number of supporting reads are graphically shown. (A) for PD6047a. (B) for PD10014a.