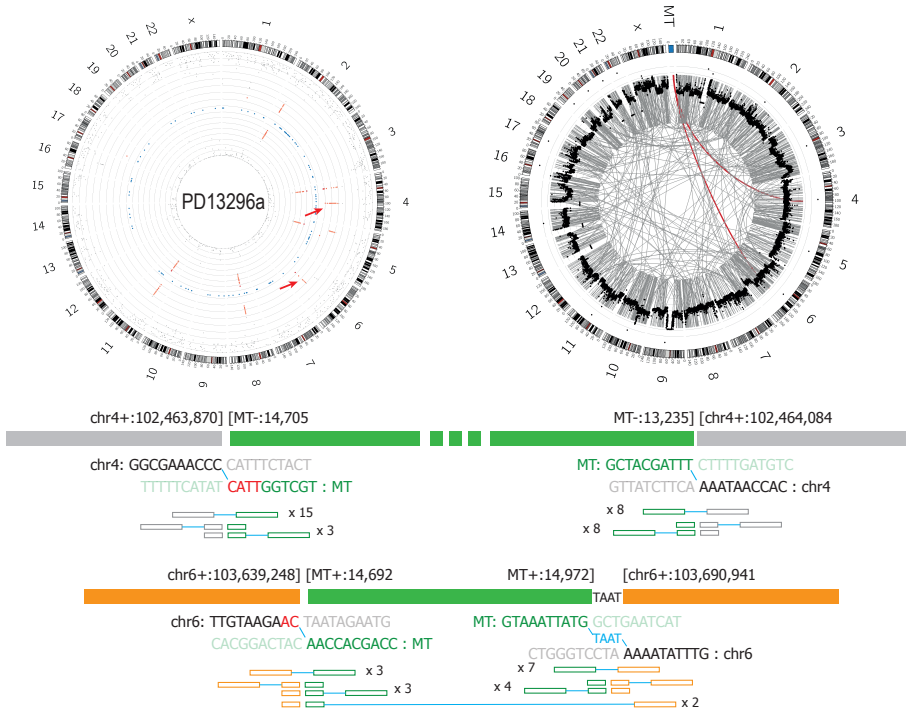
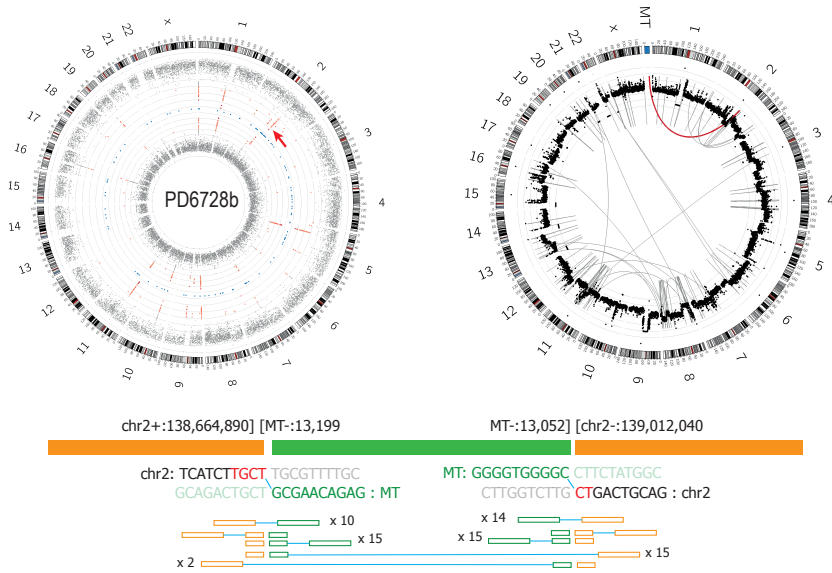


A



B



Supplemental Figure 3 | Genome and sequence context of mtDNA nuclear transfer events. Genome-wide discordant read clusters (first circos plot), chromosomal rearrangements (second circos plot), nucleotide-resolution mitochondrial-nuclear DNAbreakpoint junctions with microhomology (red letters) and number of supporting reads are graphically shown. (A) for PD13296a. (B) for PD6728b.