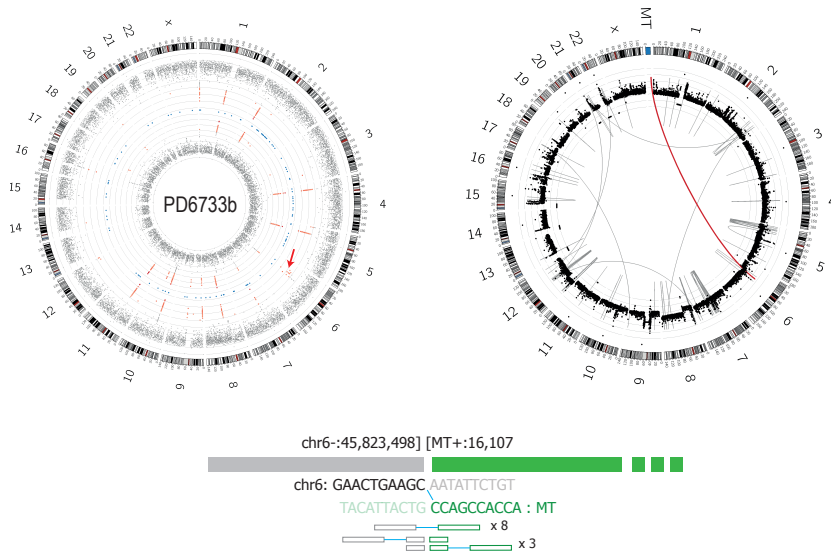
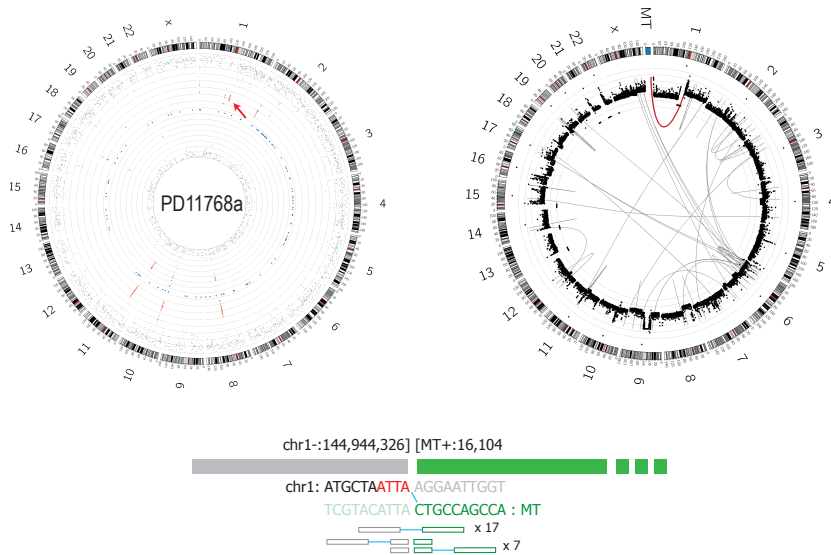


A**B**

Supplemental Figure 5 | Genome and sequence context of mtDNA nuclear transfer events. Genome-wide discordant read clusters (first circo plot), chromosomal rearrangements (second circo plot), nucleotide-resolution mitochondrial-nuclear DNAbreakpoint junctions with microhomology (red letters) and number of supporting reads are graphically shown. **(A)** for PD6733b. **(B)** for PD11768a.