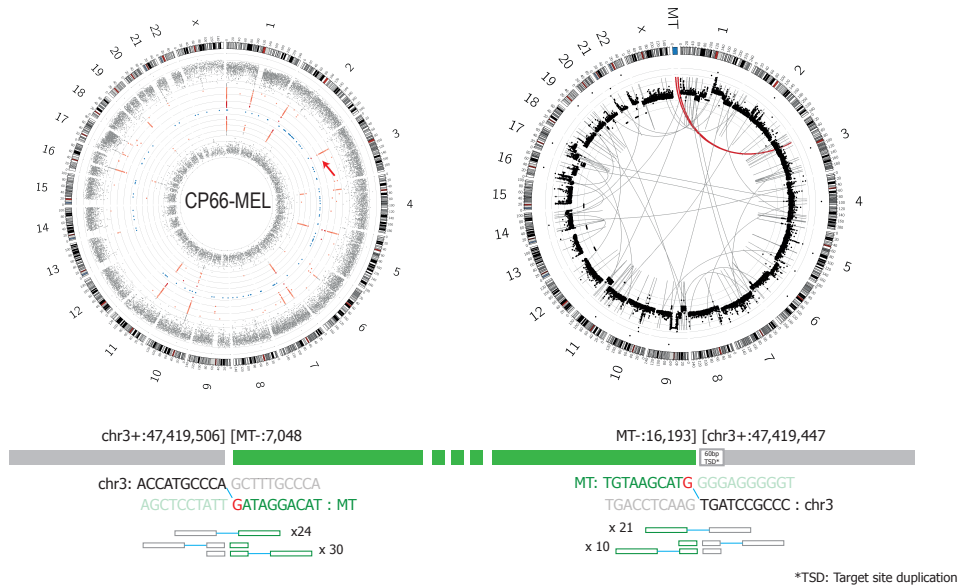
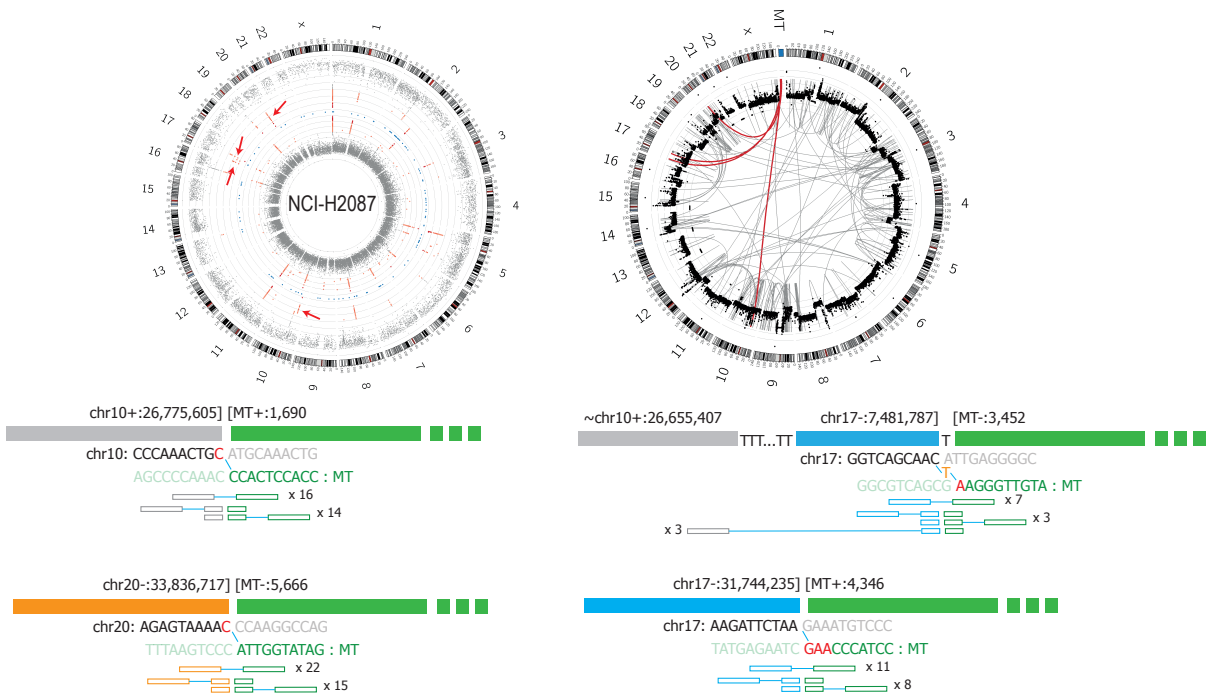


A



B



Supplemental Figure 6 | Genome and sequence context of mtDNA nuclear transfer events. Genome-wide discordant read clusters (first circos plot), chromosomal rearrangements (second circos plot), nucleotide-resolution mitochondrial-nuclear DNAbreakpoint junctions with microhomology (red letters) and number of supporting reads are graphically shown. **(A)** for CP66-MEL cell-line. **(B)** for NCI-H2087 cell-line.