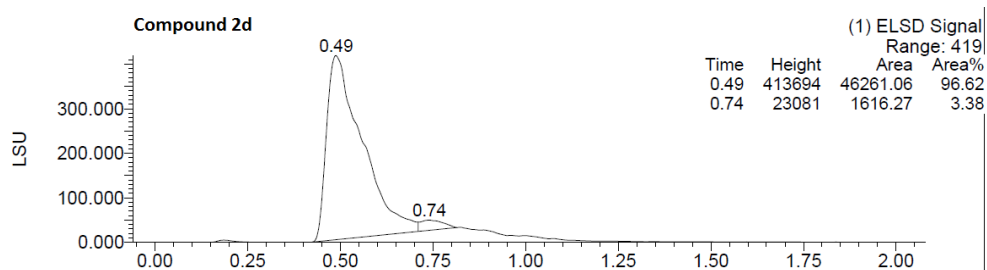
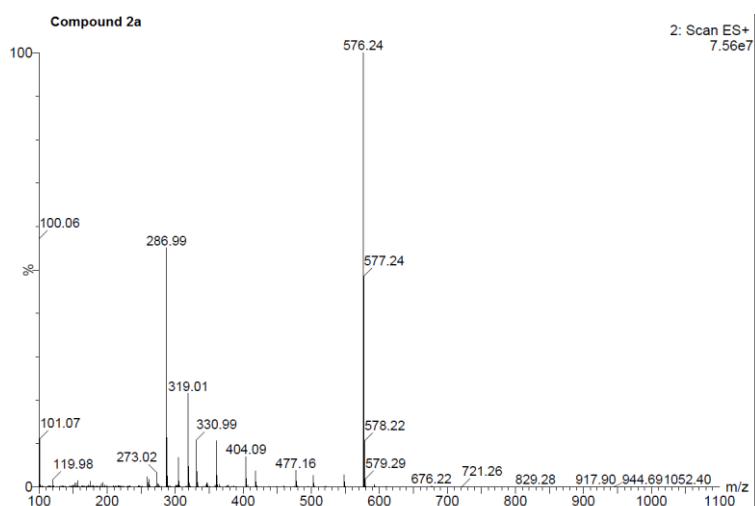
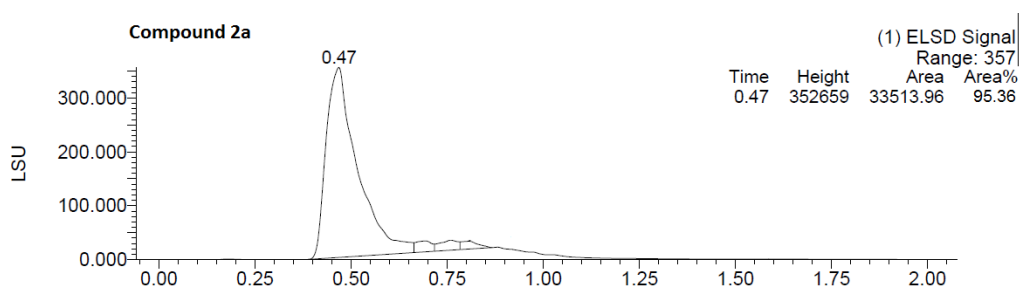


HPLC-ELSD-MS analysis

Purity was determined by analytical LC-ELSD-MS using 1mg/ml solutions of the compounds in DMSO. The analysis was performed on a Waters 2545 HPLC equipped with a 2998 UV-Vis diode array detector, a Waters 3100 ESI-MS module and a Waters 2424 ELS Detector, using a XTerraMS C18 5 μ m, 4.6 \times 50 mm column at a flow rate of 5 mL/min with a linear gradient (95%A:5%B to 100%B with 90 and 30s hold at 100% B, solvent A = water + 0.1% formic acid, solvent B = acetonitrile + 0.1% formic acid).



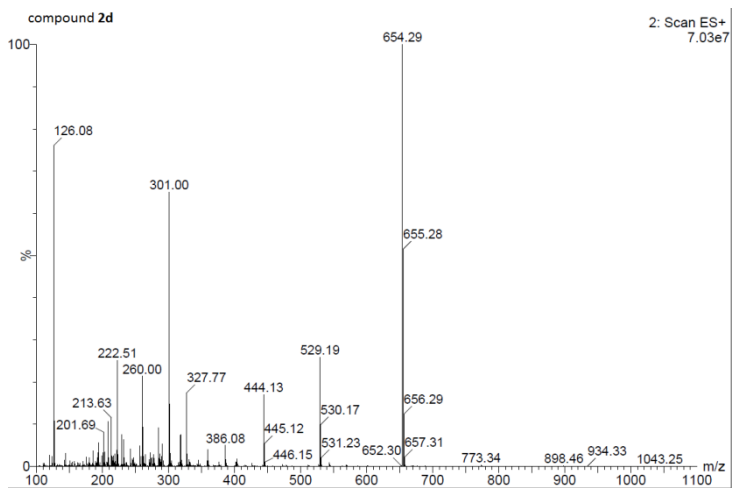


Figure S2 – HPLC-ELSD chromatograms and MS spectra of **2a** and **2d**