

Appendix from Lee et al., “Prevalence of coronary artery–pulmonary artery collaterals in patients with chronic thromboembolic pulmonary hypertension”

(Pulm. Circ., vol. 5, no. 2, p. 000)

Supplement

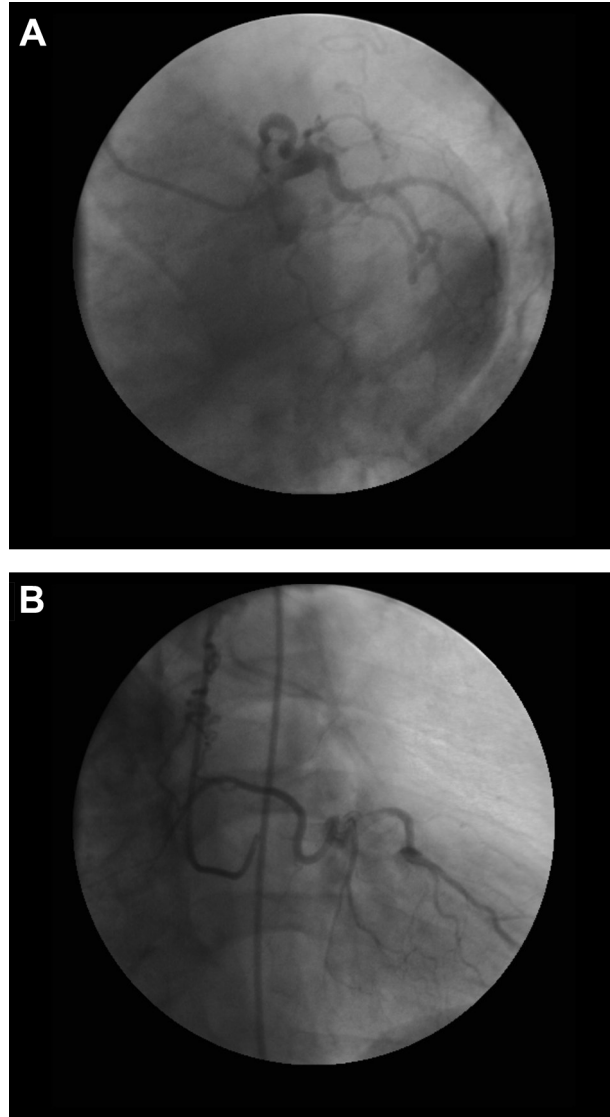


Figure S1. A probable collateral arising from the left circumflex artery displaying collateral-like properties of large caliber and significant tortuosity, shown in left anterior oblique caudal (A) and right anterior oblique cranial (B) views.

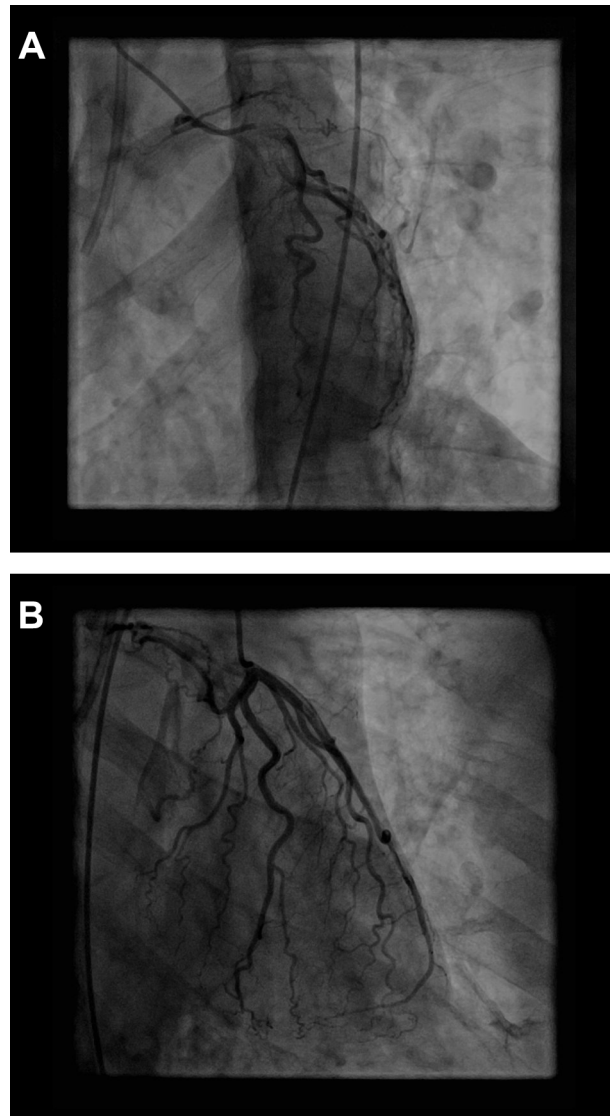


Figure S2. Collateral vessel arising from the left circumflex artery in a patient with cystic fibrosis, shown in left anterior oblique caudal (A) and right anterior oblique cranial (B) views.