

***Solanum lycopersicum* AUXIN RESPONSE FACTOR9 regulates cell division activity during early tomato fruit development**

Maaïke de Jong, Mieke Wolters-Arts, Bernardus C.J. Schimmel, Catharina L.M. Stultiens, Peter F. M. de Groot, Stephen J. Powers, Yury M. Tikunov, Arnoud G. Bovy, Celestina Mariani, Wim H. Vriezen, Ivo Rieu

Supplementary Fig. S1. *Wild type and transgenic fruits at breaker stage*

Supplementary Fig. S2. *Alignment of the predicted amino acid sequences of SIARF9 and AtARF9.*

Supplementary Fig. S3. *Auxin-induced expression of SI1AA2 and SI1AA14.*

Supplementary Fig. S4. *Southern blot analysis, verifying the specificity of the SIARF9 DNA fragment used to generate the SIARF9-RNAi lines.*

Supplementary Fig. S5. *Microscopic analysis of the pericarp during early fruit development of wild type and transgenic fruits.*

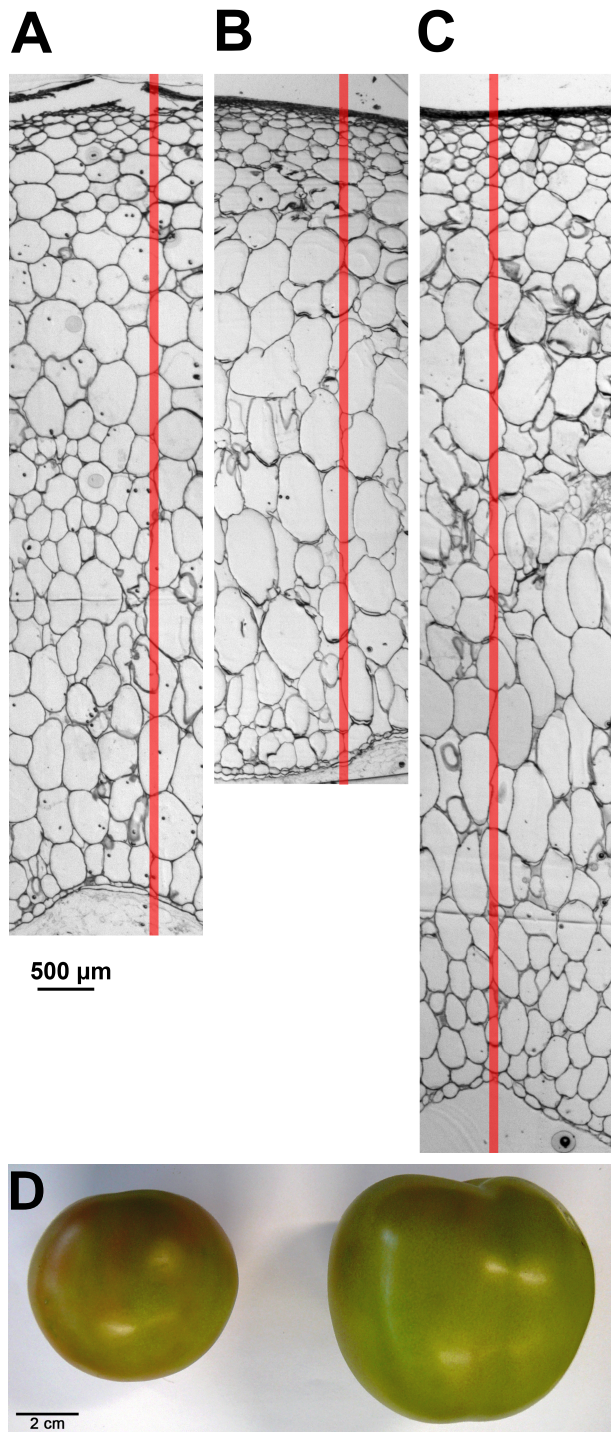
Supplementary Fig. S6. *Principal component analysis of the normalized microarray data.*

Supplementary Table S1. *Transcriptomic changes due to modulations in SIARF9 expression identified by microarray analysis.*

Supplementary Table S2. *Auxin-related cis-acting regulatory elements.*

Supplementary Table S3. *SIARF9 expression during tomato fruit set.*

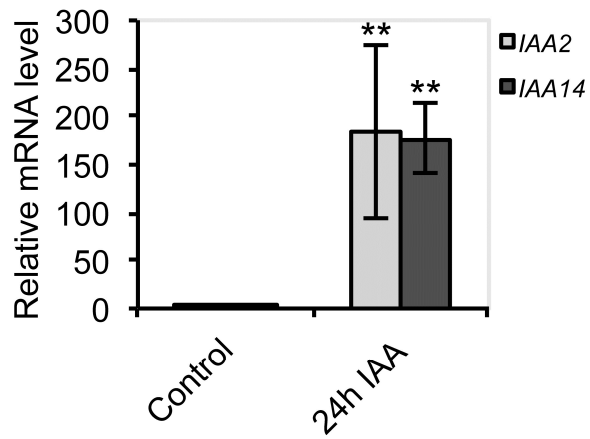
Supplementary Table S4. *Leading edge subsets from the GSEA comparing the transcriptomes of the SIARF9-OE and SIARF9-RNAi lines.*



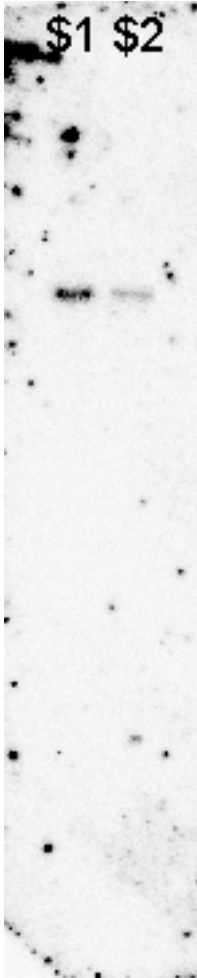
Supplementary Fig. S1. Wild type and transgenic fruits at breaker stage. Micrographs of the pericarp from wild-type (A), *SIARF9*-OE (B), and *SIARF9*-RNAi (C) fruit. For estimation of the number of cell layers within the pericarp, the number of cells along the red line were scored. (D) Picture of wild type (left) and *SIARF9*-RNAi (right) fruits.

| | | | | | | |
|--------|-----|---------------------|--------------------|---------------------|---------------------|---------------------|
| SIARF9 | 1 | MATINGWCYE | SQPNMNSPGK | KDALYHELWQ | LCAGPVVDVP | REGERVYFPP |
| AtARF9 | 1 | ----- | ---MANRGG | -EYLYDELWK | LCAGPLVDVP | QAQERVYFPP |
| SIARF9 | 51 | <u>QGHMEQLVAS</u> | <u>INQ-EMDQRV</u> | <u>PSFNLKSKVL</u> | <u>CRVINSHFLA</u> | <u>EEDNDEVYVQ</u> |
| AtARF9 | 36 | <u>QGHMEQLEAS</u> | <u>TQQVDLNTMK</u> | <u>PLFVLPKIL</u> | <u>CNVMNVSLQA</u> | <u>EKDTDEVYAQ</u> |
| SIARF9 | 100 | <u>ITLMP</u> EPAPHV | <u>PEPTT</u> PDPLI | <u>PQDVK</u> PRFHS | <u>FCKVL</u> TASDT | <u>STHGG</u> FSVLR |
| AtARF9 | 86 | <u>ITLIP</u> PVGTEV | <u>DEPMS</u> PDPS | <u>PELQR</u> PKVHS | <u>FSKVL</u> TASDT | <u>STHGG</u> FSVLR |
| SIARF9 | 150 | <u>KHAN</u> ECLEPPL | <u>DLNQQT</u> PTQE | <u>LIAK</u> DLHDVE | <u>WRFKH</u> IFRQG | <u>PRRHL</u> TTGW |
| AtARF9 | 136 | <u>KHAT</u> ECLEPPL | <u>DMTQQT</u> PTQE | <u>LVAE</u> DVHGYQ | <u>WKFKH</u> IFRQG | <u>PRRHL</u> TTGW |
| SIARF9 | 200 | <u>STFVS</u> SKKLV | <u>AGDS</u> FVFLRG | <u>NGQL</u> RVGVK | <u>RLVRO</u> QSSMP | <u>SSVM</u> SSQSMH |
| AtARF9 | 186 | <u>STFVT</u> SKRLV | <u>AGDT</u> FVFLRG | <u>ENGE</u> LRVGVK | <u>RANL</u> QSSMP | <u>SSVI</u> SSHSMH |
| SIARF9 | 250 | <u>LGVLATA</u> SHA | <u>VTTQT</u> MFVVY | <u>YKPR</u> TTQFIV | <u>GVNKY</u> LEALK | <u>HEYA</u> VGMRFK |
| AtARF9 | 236 | <u>LGVLATA</u> SHA | <u>TQTK</u> TMFIVY | <u>YKPR</u> TSQFII | <u>SLNKY</u> LEAMS | <u>NKFS</u> VGMRFK |
| SIARF9 | 300 | <u>MQFEA</u> EGNPD | <u>RRFM</u> GTIVGI | <u>DDL</u> SSQWKNS | <u>AWRS</u> LKVRWD | <u>EPAA</u> IARPDR |
| AtARF9 | 286 | <u>MRFE</u> EGDSE | <u>RRYS</u> GTVIGV | <u>KDCS</u> PHWKDS | <u>KWRCL</u> EVHWD | <u>EPAS</u> ISRPNK |
| SIARF9 | 350 | <u>VSPWE</u> IKPYV | <u>CSIP</u> NVLVPP | <u>TAEK</u> KNKRHRL | <u>HSEI</u> KISEQP | <u>SSSN</u> ASAVWN |
| AtARF9 | 336 | <u>VSPWE</u> IEPFV | <u>NSEN</u> --VPKS | <u>VMLK</u> KNKRPRQ | <u>VSEV</u> SALDVG | --ITASNLS |
| SIARF9 | 400 | <u>PSLR</u> SPQFNT | <u>FGIN</u> SSTNCA | <u>LASL</u> TESGWQ | <u>LPHL</u> NTSGML | <u>VDEP</u> EDGRSA |
| AtARF9 | 382 | <u>SVLT</u> QP--HE | <u>FAQSC</u> IT--- | -----SQWS | <u>SPQQ</u> CHR--- | --DANEDAKKS |
| SIARF9 | 450 | <u>PTWCG</u> FPCVL | <u>APQF</u> GGGTNQ | <u>PIVI</u> PTDGRK | <u>CDTK</u> KTCRLF | <u>GIDL</u> KSSSIS |
| AtARF9 | 417 | <u>DWLNN</u> SYSVS | <u>NVAK</u> DSTLND | <u>QMVS</u> SPVEQKK | <u>PETT</u> TANYRLF | <u>GIDL</u> MSSSLA |
| SIARF9 | 500 | <u>TT</u> EAR-LQLQ | <u>PAGI</u> SCVFAE | <u>RAPP</u> NTPVAG | <u>DS</u> DQKSELSV | <u>DFK</u> DQMQLGHL |
| AtARF9 | 467 | <u>VPEE</u> KTAPMR | <u>PINIS</u> ----- | ----KPTMDS | <u>HSDP</u> KSEISK | <u>VSEE</u> KKQEPA |
| SIARF9 | 549 | <u>RLPL</u> KEVQSK | <u>QSC</u> STRSRTK | <u>VQM</u> QGVAVGR | <u>AVDL</u> TILKGY | <u>DEL</u> TKELEEM |
| AtARF9 | 508 | <u>EGSP</u> KEVQSK | <u>QSS</u> STRSRTK | <u>VQM</u> QGVAVGR | <u>AVDL</u> NALKGY | <u>NEL</u> IDDIKEL |
| SIARF9 | 599 | <u>FEI</u> QGELQSR | <u>QKWG</u> LVFTDD | <u>EGD</u> TMLMGDY | <u>PWQ</u> DFCNVVR | <u>KIFI</u> CSQDM |
| AtARF9 | 558 | <u>FDI</u> KGELRSR | <u>NQWE</u> LVFTDD | <u>EGD</u> MMLVGD | <u>PWPE</u> FCNMVK | <u>RIFI</u> WSKEEV |
| SIARF9 | 649 | <u>KKLT</u> ----- | ----- | --LSRADS-- | -- | |
| AtARF9 | 608 | <u>KKMT</u> PGNQLR | <u>MLLR</u> EVETTL | <u>TTT</u> SKTDNHS | N | |

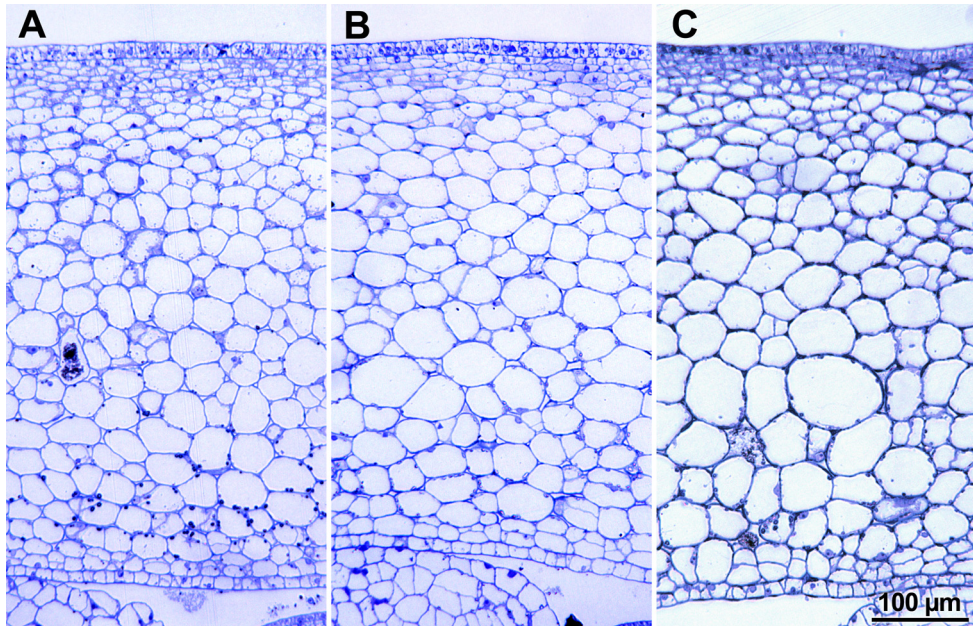
Supplementary Fig. S2. Alignment of the predicted amino acid sequences of *SIARF9* and *AtARF9*. The numbers on the left indicate the position of the amino acid residues relative to the putative translational start site. The DNA binding domain is underlined with a dashed line and the conserved domains III and IV are indicated by a thick line and thick dashed line. Identical and similar amino acids are shaded in black and grey, respectively.



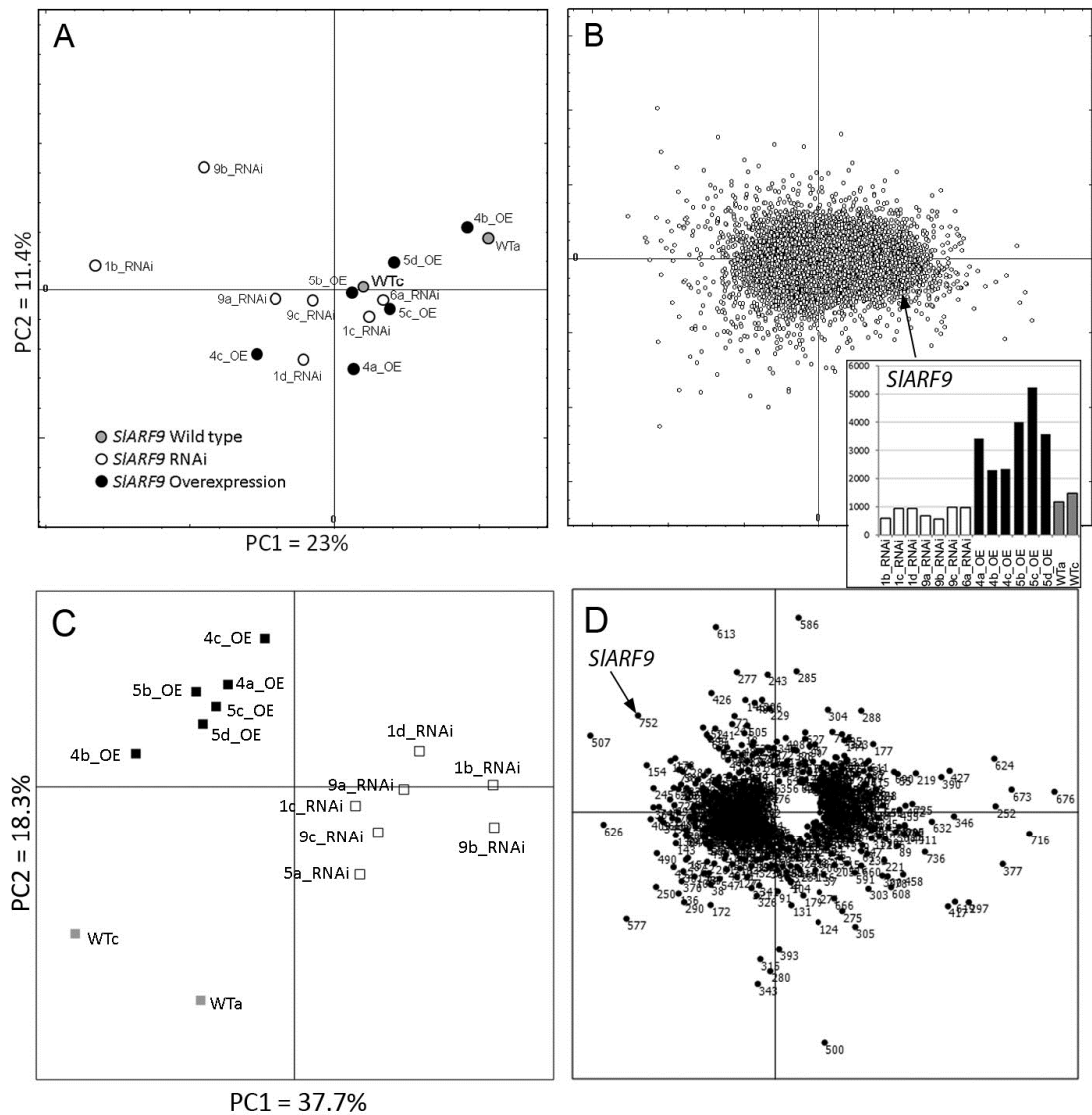
Supplementary Fig. S3. Auxin-induced expression of *SIIAA2* and *SIIAA14*. Relative mRNA levels of *SIIAA2* and *SIIAA14* in tomato ovaries of emasculated flowers collected 24h after auxin treatment (IAA). Untreated ovaries were used as a control. 4-5 ovaries were pooled for each sample. Standard errors are indicated (n=2). **, significantly different from the control, $P < 0.01$.



Supplementary Fig. S4. Southern blot analysis, verifying the specificity of the *SIARF9* DNA fragment used to generate the *SIARF9*-RNAi lines. To generate the *SIARF9*-RNAi lines, a DNA fragment encoding the mid region of the ARF (aa 367-506) was used. The specificity of this fragment was tested by southern blot analysis using the genomic DNA of two wild-type plants. Both samples showed one band after hybridization with the *SIARF9*-RNAi mid region probe.



Supplementary Fig. S5. Microscopic analysis of the pericarp during early fruit development of wild-type and transgenic fruits. Micrographs of *SIARF9*-RNAi (A), wild-type (B), and *SIARF9*-OE (C) fruit, 7-8 mm in diameter. At this stage of fruit development, the cells in the mesocarp and endocarp are already bigger in *SIARF9*-OE fruit compared to wild-type fruit, whilst the cells in the *SIARF9*-RNAi fruit are smaller and have a higher number of cell layers.



Supplementary Fig. S6. Principal Components Analysis (PCA) of the normalized log-transformed microarray data. (A) PCA score plot based on the expression of 19,168 genes (filtered for a 2-fold change between any two samples, intensity cut off value = 20) in the pericarp of 3-4mm fruits collected from *SIARF9*-OE (OE, black), *SIARF9*-RNAi (RNAi, white) and wild-type (WT, grey) plants. The loading plot is represented in (B). The arrow indicates the position of *SIARF9*. The insert shows the expression of *SIARF9* in each individual sample. (C) PCA score plot based on those genes with significantly different expression levels (t-test, $P < 0.05$) between any two types of plants: wild type, *SIARF9*-OE, and *SIARF9*-RNAi, respectively. The loading plot is represented in (D). The genes are numbered; corresponding annotations and loading values in the first two principal components can be found in Supplementary Table S1.

Supplementary Table S1. Transcriptomic changes due to modulations in *SIARF9* expression identified by microarray analysis

Genes whose transcript levels significantly changed (t-test, $P < 0.05$) when comparing the transcriptomes of any two types of plants; wild type (WT), *SIARF9*-OE and *SIARF9*-RNAi. Genes are sorted according to their loading values of PC1 in the Principal Components Analysis, which describes the difference between wild type and *SIARF9*-OE plants on one hand and *SIARF9*-RNAi plants on the other (Supplementary Fig. S5D). For each gene, the fold change in expression and correlation to *SIARF9* transcript levels are shown.

| ID | ITAG2.3 Hit description | MapMan Bin Code | PCA loadings | | | OE vs. WT | | OE vs. RNAi | | RNAi vs. WT | | Pearson correlation to <i>SIARF9</i> | |
|----------------|---|-----------------|--------------|-------|-------|-------------|---------|-------------|---------|-------------|---------|--------------------------------------|---------|
| | | | PCA label | PC1 | PC2 | Fold change | P-value | Fold change | P-value | Fold change | P-value | r | P-value |
| Solyc02g064830 | Indole-3-acetic acid-amido synthetase GH3.8 | 17.2.3 | 676 | -0.15 | -0.01 | 2.26 | 0.497 | -4.57 | 0.019 | 10.30 | 0.035 | -0.45 | 0.092 |
| Solyc03g119590 | NIMIN2c protein | 35.2 | 716 | -0.13 | 0.033 | 1.29 | 0.754 | -3.24 | 0.006 | 4.18 | 0.032 | -0.38 | 0.162 |
| Solyc09g015770 | WRKY transcription factor 6 | 27.3.32 | 673 | -0.12 | -0.01 | 2.78 | 0.483 | -2.52 | 0.024 | 6.98 | 0.019 | -0.28 | 0.312 |
| Solyc08g067540 | Non-specific lipid-transfer protein | 35.2 | 377 | -0.12 | 0.057 | -1.44 | 0.276 | -5.17 | 0.000 | 3.58 | 0.035 | -0.64 | 0.01 |
| Solyc03g116890 | WRKY transcription factor 2 | 27.3.32 | 624 | -0.12 | -0.04 | 2.19 | 0.047 | -3.84 | 0.061 | 8.41 | 0.072 | -0.44 | 0.101 |
| Solyc09g083360 | Basic helix-loop-helix protein | 27.3.6 | 252 | -0.12 | 0.005 | 1.08 | 0.759 | -3.98 | 0.007 | 4.29 | 0.077 | -0.52 | 0.047 |
| Solyc05g007980 | High affinity sulfate transporter 2 | 34.6 | 507 | 0.107 | -0.07 | 1.31 | 0.228 | 3.76 | 0.000 | -2.87 | 0.078 | 0.72 | 0.002 |
| Solyc04g071990 | Tomato GIGANTEA 1 | 33.99 | 626 | 0.101 | 0.011 | -1.35 | 0.567 | 2.24 | 0.034 | -3.03 | 0.083 | 0.18 | 0.521 |
| Solyc01g016840 | Unknown Protein | 35.2 | 297 | -0.1 | 0.09 | -4.64 | 0.163 | -5.09 | 0.000 | 1.10 | 0.538 | -0.47 | 0.077 |
| Solyc01g057980 | HR7 protein | 35.2 | 346 | -0.09 | 0.012 | 1.12 | 0.828 | -3.01 | 0.017 | 3.37 | 0.096 | -0.41 | 0.129 |
| Solyc11g021060 | Unknown Protein | 35.2 | 619 | -0.09 | 0.089 | -1.61 | 0.442 | -3.36 | 0.010 | 2.09 | 0.224 | -0.45 | 0.092 |
| Solyc01g056310 | Laccase-2 | 26.7 | 577 | 0.09 | 0.096 | -2.38 | 0.143 | 2.63 | 0.297 | -6.27 | 0.007 | -0.03 | 0.915 |
| Solyc08g062330 | Ankyrin repeat protein | 31.1 | 427 | -0.09 | -0.03 | 1.59 | 0.397 | -2.75 | 0.036 | 4.37 | 0.066 | -0.44 | 0.101 |
| Solyc08g077760 | Unknown Protein | 35.2 | 417 | -0.09 | 0.096 | -2.89 | 0.076 | -4.79 | 0.003 | 1.65 | 0.567 | -0.62 | 0.014 |
| Solyc07g006480 | LRR receptor-like serine/threonine-protein kinase FEI 1 | 30.2.11 | 390 | -0.09 | -0.02 | 1.37 | 0.547 | -3.63 | 0.033 | 4.97 | 0.108 | -0.33 | 0.23 |
| Solyc08g082630 | Auxin response factor 9 | 27.3.4 | 752 | 0.08 | -0.09 | 2.63 | 0.009 | 4.27 | 0.000 | -1.63 | 0.032 | 1.00 | 0 |
| Solyc06g060110 | Amino acid permease | 34.3 | 632 | -0.08 | 0.017 | -1.02 | 0.819 | -2.70 | 0.011 | 2.66 | 0.120 | -0.54 | 0.038 |
| Solyc03g096740 | Unknown Protein | 35.2 | 154 | 0.076 | -0.04 | 1.17 | 0.422 | 2.52 | 0.001 | -2.16 | 0.262 | 0.56 | 0.03 |
| Solyc12g009220 | Jasmonate ZIM-domain protein 1 | 17.7.2 | 736 | -0.08 | 0.044 | -1.05 | 0.664 | -2.48 | 0.010 | 2.36 | 0.100 | -0.46 | 0.084 |
| Solyc12g098610 | Xyloglucan endotransglucosylase/hydrolase 8 | 10.7 | 409 | 0.075 | 0.007 | -1.45 | 0.339 | 2.36 | 0.003 | -3.43 | 0.001 | 0.43 | 0.11 |
| Solyc03g093860 | ATP-dependent DNA helicase | 28.1 | 364 | 0.074 | -0 | -1.05 | 0.894 | 1.94 | 0.012 | -2.04 | 0.111 | 0.48 | 0.07 |
| Solyc02g064960 | AP2-like ethylene-responsive transcription factor | 27.3.3 | 245 | 0.073 | -0.02 | 1.30 | 0.728 | 2.40 | 0.012 | -1.85 | 0.083 | 0.56 | 0.03 |
| Solyc01g066360 | Pectinesterase | 10.8.1 | 250 | 0.073 | 0.068 | -2.44 | 0.098 | 2.33 | 0.118 | -5.68 | 0.000 | -0.02 | 0.944 |
| Solyc03g115770 | Timing of CAB expression-like | 27.3.66 | 490 | 0.072 | 0.038 | -1.46 | 0.329 | 2.33 | 0.069 | -3.39 | 0.001 | 0.19 | 0.498 |

Supplementary Table S1. continued

| | | | | | | | | | | | | | |
|----------------|--|---------------|-----|-------|-------|-------|-------|-------|-------|-------|-------|-------|-------|
| Solyc12g042930 | Os01g0611000 protein | 35.2 | 411 | -0.07 | 0.028 | -1.20 | 0.434 | -2.70 | 0.015 | 2.26 | 0.232 | -0.40 | 0.14 |
| Solyc07g053550 | Glutaredoxin | 21.4 | 219 | -0.07 | -0.03 | 1.51 | 0.337 | -1.75 | 0.025 | 2.64 | 0.022 | -0.45 | 0.092 |
| Solyc07g017530 | Conserved oligomeric Golgi complex subunit 3 | 29.3.4.2 | 366 | 0.07 | 0.008 | -1.26 | 0.233 | 1.68 | 0.041 | -2.12 | 0.098 | 0.51 | 0.052 |
| Solyc06g007610 | Early tobacco anther 1 | 35.2 | 740 | 0.07 | -0 | -1.20 | 0.528 | 2.27 | 0.021 | -2.71 | 0.027 | 0.55 | 0.034 |
| Solyc02g090350 | Cytochrome P450 | 26.10 | 725 | -0.07 | 0.001 | 1.22 | 0.751 | -2.04 | 0.014 | 2.50 | 0.033 | -0.46 | 0.084 |
| Solyc12g055810 | AAA-ATPase | 29.5.9 | 349 | 0.068 | 0.01 | -1.44 | 0.464 | 1.99 | 0.004 | -2.86 | 0.016 | 0.27 | 0.33 |
| Solyc04g009440 | NAC domain protein | 33.99 | 452 | -0.07 | 0.001 | 1.37 | 0.174 | -2.07 | 0.003 | 2.85 | 0.012 | -0.51 | 0.052 |
| Solyc02g070720 | Unknown Protein | 35.2 | 149 | -0.07 | 0.025 | 1.07 | 0.772 | -2.71 | 0.022 | 2.91 | 0.133 | -0.49 | 0.064 |
| Solyc04g082500 | ATP binding / serine-threonine kinase | 29.4.1.57 | 385 | -0.06 | 0.019 | -1.26 | 0.355 | -2.37 | 0.013 | 1.88 | 0.260 | -0.59 | 0.021 |
| Solyc01g108780 | Alpha-hydroxynitrile lyase | 26.8 | 702 | -0.06 | 0.021 | -1.12 | 0.822 | -1.84 | 0.006 | 1.64 | 0.084 | -0.30 | 0.277 |
| Solyc09g074230 | Glucose transporter 8 | 34.2 | 672 | 0.064 | -0.01 | 1.03 | 0.932 | 1.96 | 0.010 | -1.91 | 0.106 | 0.44 | 0.101 |
| Solyc05g053860 | Solute carrier family 22 member 5 | 34.14 | 157 | 0.064 | -0.04 | -1.13 | 0.743 | 2.48 | 0.005 | -2.80 | 0.025 | 0.62 | 0.014 |
| Solyc03g058490 | Unknown Protein | 35.2 | 148 | 0.063 | 0.007 | -1.09 | 0.718 | 1.90 | 0.029 | -2.07 | 0.098 | 0.47 | 0.077 |
| Solyc09g092520 | Xyloglucan endotransglucosylase/hydrolase 8 | 10.7 | 492 | 0.063 | 0.051 | -2.41 | 0.072 | 1.55 | 0.153 | -3.73 | 0.005 | 0.03 | 0.915 |
| Solyc03g026160 | F-box family protein | 31.1 | 458 | -0.06 | 0.064 | -1.74 | 0.383 | -2.43 | 0.002 | 1.40 | 0.281 | -0.47 | 0.077 |
| Solyc03g083960 | Trehalose 6-phosphate phosphatase | 3.2.2 | 648 | 0.063 | -0.02 | -1.15 | 0.672 | 1.91 | 0.022 | -2.20 | 0.084 | 0.52 | 0.047 |
| Solyc09g010060 | Kinesin | 31.1 | 691 | 0.062 | -0.01 | -1.25 | 0.668 | 1.77 | 0.005 | -2.21 | 0.058 | 0.39 | 0.151 |
| Solyc03g083150 | Unknown Protein | 35.2 | 143 | 0.062 | 0.03 | -1.50 | 0.178 | 1.64 | 0.050 | -2.46 | 0.015 | 0.43 | 0.11 |
| Solyc01g107490 | BHLH transcription factor | 17.5.3 | 455 | -0.06 | 0.005 | -1.00 | 0.921 | -1.96 | 0.008 | 1.95 | 0.057 | -0.64 | 0.01 |
| Solyc02g084080 | Unknown Protein | 35.2 | 55 | -0.06 | -0.03 | 2.34 | 0.018 | -1.95 | 0.082 | 4.57 | 0.022 | -0.27 | 0.33 |
| Solyc07g065880 | Kinesin | 31.1 | 130 | 0.062 | 0.022 | -1.68 | 0.057 | 1.74 | 0.014 | -2.93 | 0.006 | 0.25 | 0.369 |
| Solyc10g009550 | WRKY transcription factor | 27.3.32 | 679 | -0.06 | 0.021 | -1.13 | 0.764 | -2.17 | 0.007 | 1.92 | 0.136 | -0.45 | 0.092 |
| Solyc10g055470 | Beta-galactosidase | 26.3.2 | 136 | 0.061 | 0.075 | -2.43 | 0.071 | 1.63 | 0.403 | -3.96 | 0.000 | -0.12 | 0.67 |
| Solyc05g051440 | Plant-specific domain TIGR01570 family protein | 35.2 | 89 | -0.06 | 0.037 | -1.05 | 0.755 | -2.85 | 0.002 | 2.71 | 0.071 | -0.50 | 0.058 |
| Solyc02g092630 | Unknown Protein | 35.2 | 189 | 0.061 | 0.009 | -1.10 | 0.680 | 1.98 | 0.022 | -2.18 | 0.027 | 0.67 | 0.006 |
| Solyc01g087790 | Subtilisin-like protease | 29.5.1 | 178 | 0.061 | -0.05 | 1.13 | 0.510 | 1.96 | 0.011 | -1.74 | 0.242 | 0.60 | 0.018 |
| Solyc07g048110 | Uncharacterized membrane protein C24H6.13 | 20.2.3 | 700 | 0.06 | 0.002 | -1.26 | 0.386 | 1.59 | 0.026 | -2.00 | 0.094 | 0.34 | 0.215 |
| Solyc09g008970 | Unknown Protein | 35.2 | 308 | -0.06 | 0.025 | -1.24 | 0.388 | -2.12 | 0.006 | 1.71 | 0.170 | -0.64 | 0.01 |
| Solyc03g026210 | Dihydrodipicolinate reductase family protein | 13.1.3.5.2 | 217 | 0.06 | -0.02 | 1.15 | 0.776 | 1.95 | 0.020 | -1.69 | 0.159 | 0.73 | 0.002 |
| Solyc08g013750 | F-box family protein | 29.5.11.4.3.2 | 370 | 0.06 | 0.065 | -2.31 | 0.043 | 1.30 | 0.350 | -3.02 | 0.009 | 0.00 | 1 |
| Solyc04g005040 | Matrix metalloproteinase | 29.5.7 | 690 | -0.06 | -0.03 | 1.65 | 0.240 | -1.59 | 0.091 | 2.61 | 0.037 | -0.32 | 0.245 |
| Solyc07g055870 | Kinase family protein | 29.4 | 301 | 0.059 | 0.056 | -2.30 | 0.001 | 1.25 | 0.185 | -2.87 | 0.023 | 0.00 | 1 |
| Solyc12g010800 | BZIP transcription factor family protein | 27.3.35 | 78 | 0.059 | -0.04 | 1.58 | 0.301 | 2.18 | 0.011 | -1.38 | 0.358 | 0.58 | 0.023 |
| Solyc01g005510 | Laccase-2 | 26.7 | 290 | 0.058 | 0.082 | -2.25 | 0.143 | 1.97 | 0.428 | -4.42 | 0.002 | -0.06 | 0.832 |
| Solyc11g010120 | Peroxidase 17 | 26.12 | 532 | 0.058 | -0.02 | 1.31 | 0.395 | 2.01 | 0.004 | -1.53 | 0.149 | 0.56 | 0.03 |
| Solyc09g018780 | Oligoribonuclease | 28.99 | 58 | 0.057 | -0.03 | 1.34 | 0.347 | 2.10 | 0.006 | -1.57 | 0.216 | 0.71 | 0.003 |
| Solyc09g010320 | Predicted nucleoside-diphosphate-sugar epimerase | 35.2 | 287 | 0.056 | 0.044 | -2.11 | 0.099 | 1.58 | 0.149 | -3.33 | 0.029 | 0.00 | 1 |
| Solyc03g123590 | Remorin family protein | 27.3.99 | 704 | 0.056 | 0.017 | -1.38 | 0.319 | 1.83 | 0.013 | -2.52 | 0.002 | 0.48 | 0.07 |
| Solyc03g065250 | CER1 | 16.7 | 697 | 0.056 | 0.022 | -1.58 | 0.109 | 1.91 | 0.007 | -3.03 | 0.011 | 0.41 | 0.129 |
| Solyc06g083100 | HAUS augmin-like complex subunit 3 | 35.2 | 536 | 0.056 | 0.02 | -1.42 | 0.187 | 1.58 | 0.025 | -2.25 | 0.015 | 0.39 | 0.151 |
| Solyc11g042480 | Unknown Protein | 35.2 | 151 | 0.056 | 0.044 | -1.95 | 0.060 | 1.36 | 0.219 | -2.65 | 0.013 | 0.00 | 1 |

Supplementary Table S1. continued

| | | | | | | | | | | | | | |
|----------------|--|-------------|-----|-------|-------|-------|-------|-------|-------|-------|-------|-------|-------|
| Solyc04g054740 | Inositol-3-phosphate synthase | 3.4.3 | 608 | -0.06 | 0.075 | -2.66 | 0.083 | -2.27 | 0.004 | -1.18 | 0.787 | -0.65 | 0.009 |
| Solyc11g017270 | Receptor like kinase, RLK | 30.2.11 | 475 | -0.06 | 0.021 | -1.21 | 0.464 | -2.26 | 0.006 | 1.87 | 0.146 | -0.62 | 0.014 |
| Solyc11g042880 | Harpin-induced protein | 35.2 | 667 | 0.055 | -0.02 | -1.11 | 0.590 | 1.76 | 0.003 | -1.95 | 0.059 | 0.56 | 0.03 |
| Solyc06g062430 | Inositol oxygenase | 3.4.4 | 644 | 0.055 | 0.023 | -1.55 | 0.088 | 1.58 | 0.029 | -2.45 | 0.027 | 0.21 | 0.453 |
| Solyc10g005110 | Coproporphyrinogen III oxidase aerobic | 19.8 | 284 | 0.055 | -0.01 | 1.01 | 0.901 | 1.87 | 0.017 | -1.86 | 0.108 | 0.51 | 0.052 |
| Solyc07g053810 | Squamosa promoter binding-like protein | 27.3.28 | 378 | -0.05 | 0.065 | -1.51 | 0.157 | -3.04 | 0.009 | 2.01 | 0.344 | -0.40 | 0.14 |
| Solyc06g060450 | Transmembrane emp24 domain-containing protein 10 | 34.99 | 186 | -0.05 | 0.031 | -1.17 | 0.634 | -2.32 | 0.003 | 1.98 | 0.047 | -0.61 | 0.016 |
| Solyc01g098230 | Mitochondrial import inner membrane translocase | 29.3.2 | 470 | 0.054 | 0.006 | -1.16 | 0.651 | 1.72 | 0.017 | -2.00 | 0.049 | 0.40 | 0.14 |
| Solyc08g074960 | Nodulin-like family protein expressed | 33.99 | 133 | 0.054 | 0.008 | -1.60 | 0.135 | 1.69 | 0.015 | -2.71 | 0.003 | 0.21 | 0.453 |
| Solyc04g080170 | Protein serine/threonine kinase | 29.4 | 587 | 0.053 | -0.02 | -1.02 | 0.949 | 1.72 | 0.008 | -1.76 | 0.105 | 0.46 | 0.084 |
| Solyc10g086280 | Heavy metal-associated domain containing protein expressed | 34.99 | 656 | -0.05 | 0.001 | 1.10 | 0.707 | -1.70 | 0.014 | 1.86 | 0.055 | -0.51 | 0.052 |
| Solyc00g009110 | Inositol-1 4 5-trisphosphate 5-Phosphatase-like protein | 28.1 | 100 | 0.053 | 0.061 | -2.36 | 0.031 | 1.36 | 0.204 | -3.19 | 0.007 | -0.02 | 0.944 |
| Solyc01g111610 | Protein binding protein | 29.5.11.4.2 | 549 | -0.05 | 0.001 | 1.07 | 0.842 | -1.69 | 0.007 | 1.80 | 0.037 | -0.60 | 0.018 |
| Solyc01g105660 | 1-aminocyclopropane-1-carboxylate oxidase | 17.5.1 | 286 | 0.052 | -0.04 | 1.53 | 0.402 | 2.55 | 0.005 | -1.67 | 0.130 | 0.77 | 0.001 |
| Solyc10g085870 | UDP-glucosyltransferase family 1 protein | 26.2 | 221 | -0.05 | 0.052 | -1.91 | 0.238 | -2.21 | 0.000 | 1.16 | 0.353 | -0.64 | 0.01 |
| Solyc09g089870 | Transcription factor | 27.3.6 | 239 | 0.052 | -0 | -1.21 | 0.567 | 1.60 | 0.021 | -1.95 | 0.055 | 0.16 | 0.569 |
| Solyc10g009370 | Mutator-like transposase | 27.3.99 | 300 | -0.05 | 0.064 | -1.83 | 0.229 | -2.09 | 0.010 | 1.15 | 0.526 | -0.49 | 0.064 |
| Solyc07g065600 | Genomic DNA chromosome 5 P1 clone MDF20 | 35.2 | 443 | 0.051 | 0.013 | -1.60 | 0.107 | 1.49 | 0.021 | -2.39 | 0.031 | 0.13 | 0.644 |
| Solyc02g071830 | AT5g06970/MOJ9_14 | 35.2 | 201 | 0.051 | -0 | -1.00 | 0.918 | 1.74 | 0.008 | -1.74 | 0.106 | 0.42 | 0.119 |
| Solyc08g082680 | Ring H2 finger protein | 27.3.99 | 230 | 0.051 | -0 | -1.41 | 0.444 | 1.76 | 0.002 | -2.48 | 0.027 | 0.20 | 0.475 |
| Solyc09g008000 | ABC transporter G family member 28 | 34.16 | 12 | 0.051 | 0.016 | -1.85 | 0.061 | 1.57 | 0.043 | -2.89 | 0.005 | 0.17 | 0.545 |
| Solyc03g111430 | Unknown Protein | 35.2 | 270 | 0.051 | 0.008 | -1.44 | 0.120 | 1.59 | 0.023 | -2.28 | 0.015 | 0.48 | 0.07 |
| Solyc07g053210 | DNA cross-link repair 1B-like protein | 28.2 | 187 | 0.051 | -0 | -1.06 | 0.872 | 1.66 | 0.009 | -1.76 | 0.091 | 0.50 | 0.058 |
| Solyc09g082830 | ARGONAUTE 1 | 27.3.36 | 489 | 0.051 | 0.003 | -1.21 | 0.680 | 1.76 | 0.006 | -2.13 | 0.024 | 0.48 | 0.07 |
| Solyc04g058090 | Phosphoribosylformylglycinamide cyclo-ligase | 23.1.2.5 | 405 | 0.05 | -0 | -1.11 | 0.725 | 1.65 | 0.010 | -1.84 | 0.077 | 0.47 | 0.077 |
| Solyc09g075400 | Unknown Protein | 35.2 | 590 | -0.05 | 0.029 | 1.06 | 0.877 | -1.72 | 0.015 | 1.82 | 0.042 | -0.25 | 0.369 |
| Solyc06g072740 | Inositol-tetrakisphosphate 1-kinase 1 | 30.4.5 | 508 | -0.05 | -0.01 | 1.51 | 0.243 | -1.44 | 0.091 | 2.18 | 0.029 | -0.18 | 0.521 |
| Solyc04g009960 | L-allo-threonine aldolase | 13.2.5.2 | 345 | -0.05 | 0.011 | -1.02 | 0.842 | -1.79 | 0.004 | 1.76 | 0.034 | -0.70 | 0.004 |
| Solyc01g087970 | Serine carboxypeptidase 1 | 29.5.5 | 400 | 0.05 | -0.02 | -1.08 | 0.939 | 1.74 | 0.009 | -1.88 | 0.170 | 0.42 | 0.119 |
| Solyc08g076860 | Zinc-binding family protein | 27.3.99 | 371 | -0.05 | -0.01 | 1.19 | 0.321 | -1.55 | 0.033 | 1.85 | 0.090 | -0.45 | 0.092 |
| Solyc06g074320 | BZIP transcription factor | 27.3.35 | 177 | -0.05 | -0.05 | 2.48 | 0.005 | -1.28 | 0.192 | 3.16 | 0.004 | -0.06 | 0.832 |
| Solyc11g071810 | CRABS CLAW | 27.3.10 | 394 | 0.048 | -0 | 1.03 | 0.967 | 1.64 | 0.012 | -1.60 | 0.103 | 0.54 | 0.038 |
| Solyc02g071700 | GDSL esterase/lipase At1g29670 | 26.28 | 687 | -0.05 | 0.021 | -1.14 | 0.911 | -1.71 | 0.004 | 1.50 | 0.116 | -0.39 | 0.151 |
| Solyc07g064340 | Serine/threonine-protein kinase | 29.4.1.57 | 92 | 0.048 | -0.03 | 1.12 | 0.814 | 2.02 | 0.015 | -1.81 | 0.141 | 0.48 | 0.07 |
| Solyc07g052320 | Beta-1 3-galactosyltransferase 6 | 29.7 | 307 | -0.05 | -0.01 | 1.36 | 0.207 | -1.52 | 0.004 | 2.07 | 0.014 | -0.39 | 0.151 |
| Solyc07g042520 | Sucrose synthase 4 | 2.2.1.5 | 237 | 0.047 | 0.058 | -2.05 | 0.042 | 1.21 | 0.376 | -2.48 | 0.010 | 0.07 | 0.804 |
| Solyc09g072860 | Genomic DNA chromosome 5 P1 clone MRH10 | 35.2 | 480 | 0.047 | 0.024 | -1.49 | 0.032 | 1.32 | 0.112 | -1.96 | 0.066 | 0.22 | 0.431 |
| Solyc02g076950 | UPF0052 domain protein | 35.2 | 200 | 0.047 | 0.026 | -1.49 | 0.155 | 1.42 | 0.097 | -2.11 | 0.033 | 0.27 | 0.33 |

Supplementary Table S1. continued

| | | | | | | | | | | | | | |
|----------------|--|---------------|-----|-------|-------|-------|-------|-------|-------|-------|-------|-------|-------|
| Solyc08g082140 | Esterase/lipase/thioesterase family protein | 35.2 | 11 | 0.047 | 0.019 | -1.72 | 0.214 | 1.56 | 0.109 | -2.69 | 0.019 | 0.06 | 0.832 |
| Solyc02g091670 | Octicosapeptide/Phox/Bem1p domain-containing protein | 29.4 | 628 | 0.047 | -0 | -1.14 | 0.431 | 1.60 | 0.014 | -1.83 | 0.031 | 0.44 | 0.101 |
| Solyc01g109630 | mTERF domain-containing protein 3, mitochondrial | 27.3.99 | 363 | 0.047 | 0.008 | -1.43 | 0.005 | 1.52 | 0.016 | -2.17 | 0.025 | 0.29 | 0.294 |
| Solyc04g072920 | Trehalose-6-phosphate phosphatase | 3.2.2 | 82 | -0.05 | -0.03 | 1.78 | 0.066 | -1.28 | 0.109 | 2.28 | 0.020 | -0.29 | 0.294 |
| Solyc08g005680 | Undecaprenyl pyrophosphate synthase | 16.1.2 | 1 | -0.05 | 0 | 1.22 | 0.389 | -1.65 | 0.044 | 2.01 | 0.085 | -0.36 | 0.187 |
| Solyc09g056060 | Unknown Protein | 35.2 | 34 | -0.05 | 0.022 | -1.14 | 0.529 | -2.01 | 0.013 | 1.76 | 0.213 | -0.46 | 0.084 |
| Solyc01g050010 | HAT family dimerisation domain containing protein | 28.1.1.4 | 94 | 0.046 | 0.058 | -3.01 | 0.023 | 1.13 | 0.462 | -3.39 | 0.018 | -0.06 | 0.832 |
| Solyc10g079930 | UDP-glucosyltransferase HvUGT5876 | 26.2 | 184 | -0.05 | 0.004 | 1.07 | 0.759 | -1.73 | 0.002 | 1.85 | 0.022 | -0.54 | 0.038 |
| Solyc01g099560 | Carbonyl reductase 3 | 26.2.2 | 611 | -0.05 | -0.04 | 1.98 | 0.018 | -1.36 | 0.085 | 2.69 | 0.004 | -0.29 | 0.294 |
| Solyc06g060710 | Glycogenin 2 | 2.1.2 | 102 | 0.046 | -0.02 | -1.07 | 0.956 | 1.81 | 0.002 | -1.93 | 0.048 | 0.31 | 0.261 |
| Solyc12g013960 | Unknown Protein | 35.2 | 317 | -0.05 | 0.03 | -1.21 | 0.629 | -1.80 | 0.002 | 1.49 | 0.117 | -0.54 | 0.038 |
| Solyc07g066340 | UPF0431 protein C1orf66 homolog | 35.2 | 506 | 0.046 | 0.007 | -1.23 | 0.384 | 1.50 | 0.010 | -1.84 | 0.032 | 0.47 | 0.077 |
| Solyc03g118810 | Calmodulin | 30.3 | 615 | -0.05 | -0.03 | 1.56 | 0.172 | -1.41 | 0.121 | 2.19 | 0.036 | -0.34 | 0.215 |
| Solyc07g044740 | 3-hydroxyisobutyryl-CoA hydrolase-like protein 5 | 11.9.4.3 | 45 | 0.046 | -0.02 | 1.18 | 0.532 | 1.62 | 0.020 | -1.38 | 0.252 | 0.45 | 0.092 |
| Solyc11g064770 | Cc-nbs-Irr, resistance protein | 20.1 | 436 | 0.046 | 0.017 | -1.36 | 0.126 | 1.38 | 0.074 | -1.88 | 0.041 | 0.33 | 0.23 |
| Solyc08g067370 | Unknown Protein | 35.2 | 732 | 0.046 | -0.01 | -1.10 | 0.762 | 1.53 | 0.018 | -1.69 | 0.107 | 0.57 | 0.027 |
| Solyc01g088720 | Transcription initiation factor IIB | 27.2 | 523 | 0.046 | 0.032 | -1.69 | 0.030 | 1.26 | 0.180 | -2.13 | 0.022 | 0.12 | 0.67 |
| Solyc01g109250 | TMV response-related protein | 35.2 | 238 | -0.05 | 0.003 | 1.09 | 0.672 | -1.60 | 0.010 | 1.74 | 0.056 | -0.54 | 0.038 |
| Solyc07g063450 | Amine oxidase family protein | 26.7 | 474 | 0.045 | 0.032 | -1.50 | 0.141 | 1.34 | 0.166 | -2.01 | 0.029 | 0.13 | 0.644 |
| Solyc07g041340 | ELF4-like protein | 35.2 | 190 | 0.045 | -0.01 | 1.06 | 0.725 | 1.70 | 0.003 | -1.60 | 0.073 | 0.57 | 0.027 |
| Solyc02g087950 | cDNA clone J023065D24 full insert sequence | 29.2.1.2.2.34 | 425 | -0.05 | -0.01 | 1.46 | 0.113 | -1.75 | 0.012 | 2.54 | 0.014 | -0.40 | 0.14 |
| Solyc06g060670 | Protein arginine N-methyltransferase | 26.6 | 381 | 0.045 | 0.02 | -1.37 | 0.159 | 1.44 | 0.042 | -1.97 | 0.020 | 0.46 | 0.084 |
| Solyc11g007010 | Proline-, glutamic acid- and leucine-rich protein 1 | 35.2 | 664 | 0.045 | 0.024 | -1.46 | 0.268 | 1.43 | 0.101 | -2.09 | 0.019 | 0.16 | 0.569 |
| Solyc03g033730 | BZIP transcription factor | 27.3.35 | 2 | 0.045 | 0.048 | -2.53 | 0.000 | 1.28 | 0.006 | -3.23 | 0.000 | -0.03 | 0.915 |
| Solyc10g085820 | DnaJ-like subfamily C member 28 conserved domain protein | 35.2 | 236 | -0.05 | -0.04 | 2.23 | 0.019 | -1.24 | 0.329 | 2.78 | 0.011 | -0.05 | 0.86 |
| Solyc09g075060 | Beta-glucosidase | 26.3 | 44 | 0.045 | -0.03 | 1.63 | 0.122 | 2.04 | 0.007 | -1.25 | 0.399 | 0.58 | 0.023 |
| Solyc02g078150 | Plant-specific domain TIGR01615 family protein | 35.2 | 152 | 0.045 | -0.07 | 1.57 | 0.087 | 2.04 | 0.004 | -1.30 | 0.513 | 0.71 | 0.003 |
| Solyc11g066950 | Stress responsive A/B barrel domain family protein | 35.2 | 368 | -0.05 | -0.01 | 1.37 | 0.069 | -1.75 | 0.012 | 2.39 | 0.031 | -0.47 | 0.077 |
| Solyc02g011980 | 50S ribosomal protein L23 | 35.2 | 172 | 0.044 | 0.087 | -3.43 | 0.025 | -1.11 | 0.702 | -3.09 | 0.037 | -0.27 | 0.33 |
| Solyc12g006790 | ARGONAUTE 1 | 27.3.36 | 176 | -0.04 | -0.02 | 1.89 | 0.073 | -1.51 | 0.048 | 2.85 | 0.004 | -0.27 | 0.33 |
| Solyc02g088920 | Ras GTPase-activating protein-binding protein 2 | 29.3.1 | 160 | 0.044 | -0.02 | 1.15 | 0.635 | 1.87 | 0.001 | -1.62 | 0.010 | 0.62 | 0.014 |
| Solyc09g074650 | Peptide chain release factor 1 | 29.2.5 | 264 | 0.044 | -0.01 | 1.07 | 0.556 | 1.61 | 0.009 | -1.50 | 0.165 | 0.66 | 0.007 |
| Solyc10g008470 | Engulfment and cell motility protein 1 | 35.2 | 171 | 0.044 | -0.01 | -1.24 | 0.504 | 1.71 | 0.032 | -2.12 | 0.103 | 0.24 | 0.389 |
| Solyc06g084480 | Serine protease | 29.5.5 | 361 | 0.044 | 0.016 | -1.30 | 0.318 | 1.54 | 0.037 | -2.00 | 0.002 | 0.34 | 0.215 |
| Solyc10g017620 | 5-dehydro-2-deoxygluconokinase 1 | 2.2.1.1 | 3 | 0.044 | 0.057 | -2.28 | 0.047 | 1.39 | 0.246 | -3.16 | 0.001 | 0.02 | 0.944 |
| Solyc03g005320 | Fatty acid elongase 3-ketoacyl-CoA synthase | 11.1.10 | 296 | 0.044 | 0.011 | -1.33 | 0.167 | 1.56 | 0.023 | -2.08 | 0.019 | 0.37 | 0.175 |
| Solyc02g063360 | C2 domain-containing protein | 27.3.11 | 54 | -0.04 | -0 | 1.04 | 0.902 | -2.01 | 0.027 | 2.08 | 0.162 | -0.49 | 0.064 |

Supplementary Table S1. continued

| | | | | | | | | | | | | | |
|----------------|---|---------------|-----|-------|-------|-------|-------|-------|-------|-------|-------|-------|-------|
| Solyc09g098250 | Trithorax-like protein histone-lysine N-methyltransferase | 27.3.69 | 493 | 0.044 | 0.035 | -1.69 | 0.056 | 1.21 | 0.311 | -2.04 | 0.029 | 0.16 | 0.569 |
| Solyc08g048410 | Ubiquitin carboxyl-terminal hydrolase | 29.5.11.5 | 38 | 0.044 | 0.068 | -3.25 | 0.018 | 1.11 | 0.714 | -3.60 | 0.007 | -0.05 | 0.86 |
| Solyc08g062100 | Unknown Protein | 35.2 | 369 | -0.04 | -0.03 | 1.79 | 0.090 | -1.34 | 0.117 | 2.41 | 0.006 | -0.24 | 0.389 |
| Solyc08g007890 | Mitochondrial aldehyde dehydrogenase | 35.2 | 120 | 0.043 | 0.018 | -1.51 | 0.128 | 1.35 | 0.061 | -2.04 | 0.027 | 0.20 | 0.475 |
| Solyc09g072720 | AT1G10385-like protein | 35.2 | 303 | -0.04 | 0.076 | -1.80 | 0.106 | -2.60 | 0.015 | 1.45 | 0.612 | -0.44 | 0.101 |
| Solyc12g098230 | Unknown Protein | 35.2 | 693 | -0.04 | -0.02 | 1.60 | 0.028 | -1.51 | 0.002 | 2.42 | 0.001 | -0.46 | 0.084 |
| Solyc03g121880 | Protein phosphatase 2C | 29.4 | 233 | -0.04 | 0.045 | -1.31 | 0.411 | -1.90 | 0.005 | 1.45 | 0.173 | -0.62 | 0.014 |
| Solyc03g112130 | AT5G28150-like protein | 35.2 | 499 | 0.043 | -0.07 | 1.60 | 0.421 | 2.33 | 0.018 | -1.45 | 0.266 | 0.70 | 0.004 |
| Solyc12g035670 | MCM3-associated protein | 35.2 | 566 | 0.043 | 0.031 | -1.55 | 0.092 | 1.35 | 0.109 | -2.08 | 0.011 | 0.30 | 0.277 |
| Solyc03g063090 | Unknown Protein | 35.2 | 488 | 0.043 | 0 | -1.18 | 0.646 | 1.56 | 0.023 | -1.84 | 0.075 | 0.34 | 0.215 |
| Solyc06g071930 | Unknown Protein | 35.2 | 47 | -0.04 | 0.014 | -1.02 | 0.804 | -1.87 | 0.006 | 1.83 | 0.047 | -0.61 | 0.016 |
| Solyc03g058910 | Pectate lyase | 10.6.3 | 288 | -0.04 | -0.08 | 3.36 | 0.003 | -1.08 | 0.913 | 3.64 | 0.019 | 0.08 | 0.777 |
| Solyc12g042180 | Arf-GAP | 30.5 | 310 | 0.043 | 0.024 | -1.55 | 0.142 | 1.47 | 0.096 | -2.29 | 0.016 | 0.34 | 0.215 |
| Solyc10g049390 | F-box domain-containing protein | 35.2 | 70 | -0.04 | -0.02 | 1.99 | 0.070 | -1.49 | 0.191 | 2.97 | 0.029 | -0.22 | 0.431 |
| Solyc05g008560 | Pentatricopeptide repeat-containing protein | 17.8.1 | 429 | 0.043 | 0.018 | -1.29 | 0.221 | 1.36 | 0.080 | -1.75 | 0.040 | 0.39 | 0.151 |
| Solyc12g011370 | Amino acid transporter | 34.3 | 441 | -0.04 | 0.012 | 1.07 | 0.527 | -1.65 | 0.009 | 1.76 | 0.077 | -0.53 | 0.042 |
| Solyc02g062460 | 2-oxoglutarate-dependent dioxygenase | 17.5.1 | 84 | -0.04 | 0.013 | 1.03 | 0.760 | -1.62 | 0.005 | 1.67 | 0.050 | -0.51 | 0.052 |
| Solyc03g007060 | Unknown Protein | 35.2 | 663 | 0.042 | -0.03 | 1.14 | 0.367 | 1.65 | 0.002 | -1.45 | 0.468 | 0.46 | 0.084 |
| Solyc01g105890 | (E)-beta-ocimene synthase | 16.1.5 | 746 | -0.04 | 0.016 | -1.11 | 0.775 | -1.61 | 0.010 | 1.45 | 0.151 | -0.46 | 0.084 |
| Solyc07g042170 | Jasmonate ZIM-domain protein 3 | 17.7.2 | 735 | -0.04 | 0.018 | 1.07 | 0.805 | -1.58 | 0.016 | 1.69 | 0.058 | -0.37 | 0.175 |
| Solyc06g007780 | Ras GTPase-activating protein-binding protein 2 | 29.3.1 | 655 | 0.042 | 0.002 | -1.08 | 0.741 | 1.52 | 0.011 | -1.63 | 0.044 | 0.35 | 0.201 |
| Solyc12g042860 | Unknown Protein | 35.2 | 602 | -0.04 | -0.01 | 1.38 | 0.276 | -1.38 | 0.084 | 1.90 | 0.028 | -0.21 | 0.453 |
| Solyc01g098110 | Hydrolase alpha/beta fold family protein | 11.7 | 375 | 0.042 | 0.016 | -1.50 | 0.004 | 1.37 | 0.016 | -2.06 | 0.012 | 0.27 | 0.33 |
| Solyc01g097770 | Serine/threonine protein kinase | 29.4 | 594 | 0.042 | 0.012 | -1.27 | 0.364 | 1.53 | 0.068 | -1.94 | 0.022 | 0.57 | 0.027 |
| Solyc03g111110 | Unknown Protein | 35.2 | 126 | 0.042 | 0.004 | -1.16 | 0.471 | 1.52 | 0.015 | -1.76 | 0.015 | 0.46 | 0.084 |
| Solyc01g108910 | COSII_At2g15890 | 35.2 | 203 | 0.042 | -0.01 | -1.12 | 0.752 | 1.73 | 0.026 | -1.94 | 0.042 | 0.13 | 0.644 |
| Solyc04g082330 | Pre-rRNA-processing protein TSR1 | 35.2 | 658 | 0.041 | 0 | -1.10 | 0.633 | 1.57 | 0.002 | -1.73 | 0.010 | 0.58 | 0.023 |
| Solyc01g079570 | Beta xylosidase | 10.6.2 | 631 | 0.041 | -0.06 | 1.49 | 0.293 | 2.02 | 0.009 | -1.36 | 0.369 | 0.42 | 0.119 |
| Solyc12g009420 | Polygalacturonase | 10.6.3 | 73 | 0.041 | -0.01 | 1.19 | 0.575 | 1.66 | 0.017 | -1.39 | 0.196 | 0.49 | 0.064 |
| Solyc12g094500 | Alcohol dehydrogenase 1 | 5.3 | 295 | -0.04 | 0.011 | 1.06 | 0.942 | -1.63 | 0.017 | 1.73 | 0.059 | -0.63 | 0.012 |
| Solyc09g089710 | 1-aminocyclopropane-1-carboxylate oxidase-like protein | 17.5.1 | 93 | 0.041 | 0.023 | -1.35 | 0.352 | 1.91 | 0.095 | -2.57 | 0.007 | 0.34 | 0.215 |
| Solyc12g098910 | CBL-interacting protein kinase 1 | 29.4 | 347 | -0.04 | 0.036 | -1.33 | 0.360 | -1.75 | 0.005 | 1.31 | 0.281 | -0.43 | 0.11 |
| Solyc03g093310 | F-box family protein | 29.5.11.4.3.2 | 546 | 0.041 | -0.01 | -1.18 | 0.882 | 1.58 | 0.006 | -1.86 | 0.132 | 0.19 | 0.498 |
| Solyc12g010300 | Unknown Protein | 35.2 | 261 | 0.041 | 0.049 | -2.78 | 0.022 | 1.20 | 0.510 | -3.34 | 0.012 | -0.12 | 0.67 |
| Solyc02g062490 | 2-oxoglutarate-dependent dioxygenase | 17.6.1 | 576 | -0.04 | -0.01 | 1.37 | 0.221 | -1.39 | 0.046 | 1.91 | 0.021 | -0.18 | 0.521 |
| Solyc12g043040 | Sulfate transporter | 34.6 | 106 | 0.041 | 0.019 | -1.44 | 0.175 | 1.47 | 0.100 | -2.12 | 0.048 | 0.22 | 0.431 |
| Solyc11g022440 | Unknown Protein | 35.2 | 61 | -0.04 | 0.042 | -1.18 | 0.458 | -2.05 | 0.003 | 1.74 | 0.104 | -0.58 | 0.023 |
| Solyc04g072160 | Prostaglandin E synthase 3 | 35.2 | 511 | -0.04 | 0.009 | -1.07 | 0.743 | -1.58 | 0.014 | 1.47 | 0.128 | -0.52 | 0.047 |
| Solyc12g008600 | Unknown Protein | 35.2 | 712 | 0.04 | 0.001 | -1.26 | 0.272 | 1.45 | 0.018 | -1.83 | 0.038 | 0.31 | 0.261 |
| Solyc08g083230 | Growth-regulating factor 3 | 27.3.50 | 578 | 0.04 | 0.013 | -1.24 | 0.083 | 1.45 | 0.006 | -1.80 | 0.015 | 0.45 | 0.092 |

Supplementary Table S1. continued

| | | | | | | | | | | | | | |
|----------------|--|-------------|-----|-------|-------|-------|-------|-------|-------|-------|-------|-------|-------|
| Solyc07g053250 | Unknown Protein | 35.2 | 412 | 0.04 | 0.009 | -1.24 | 0.061 | 1.37 | 0.045 | -1.70 | 0.071 | 0.43 | 0.11 |
| Solyc04g071260 | Actin | 31.1 | 42 | 0.04 | -0 | -1.04 | 0.804 | 1.64 | 0.021 | -1.70 | 0.040 | 0.51 | 0.052 |
| Solyc10g054080 | Kinesin like protein | 31.1 | 713 | 0.04 | 0.006 | -1.24 | 0.415 | 1.39 | 0.035 | -1.73 | 0.050 | 0.21 | 0.453 |
| Solyc02g078340 | Heat stress transcription factor | 20.2.1 | 140 | -0.04 | 0.013 | 1.28 | 0.647 | -1.60 | 0.034 | 2.04 | 0.023 | -0.17 | 0.545 |
| Solyc03g080010 | MutS2 protein | 28.2 | 188 | 0.04 | -0 | 1.15 | 0.737 | 1.64 | 0.016 | -1.43 | 0.091 | 0.45 | 0.092 |
| Solyc06g051560 | Flavoprotein wrbA | 35.2 | 426 | 0.04 | -0.1 | 3.31 | 0.070 | 2.76 | 0.014 | 1.20 | 0.801 | 0.35 | 0.201 |
| Solyc11g007200 | Copper chaperone | 15.2 | 646 | -0.04 | -0.01 | 1.29 | 0.562 | -1.36 | 0.048 | 1.75 | 0.003 | -0.42 | 0.119 |
| Solyc04g080380 | Unknown Protein | 35.2 | 9 | 0.04 | 0.008 | -1.35 | 0.114 | 1.44 | 0.021 | -1.94 | 0.010 | 0.39 | 0.151 |
| Solyc03g059260 | Carboxyl-terminal-processing protease | 29.5 | 660 | -0.04 | 0.055 | -1.59 | 0.277 | -1.85 | 0.022 | 1.16 | 0.556 | -0.36 | 0.187 |
| Solyc07g006010 | Nucleoporin Nup43 | 33.99 | 81 | 0.04 | -0.02 | 1.06 | 0.544 | 1.59 | 0.010 | -1.49 | 0.183 | 0.62 | 0.014 |
| Solyc06g072310 | PROTODERMAL FACTOR 2 | 27.3.22 | 374 | 0.039 | -0.02 | 1.17 | 0.468 | 1.65 | 0.004 | -1.41 | 0.309 | 0.57 | 0.027 |
| Solyc11g013530 | PHD finger family protein | 27.3.67 | 529 | 0.039 | 0.017 | -1.26 | 0.330 | 1.39 | 0.040 | -1.75 | 0.020 | 0.28 | 0.312 |
| Solyc03g123370 | (P)ppGpp synthetase I (GTP pyrophosphokinase) SpoT/RelA | 30.3 | 391 | -0.04 | -0.03 | 1.59 | 0.112 | -1.32 | 0.043 | 2.10 | 0.002 | -0.39 | 0.151 |
| Solyc10g076300 | UPF0497 membrane protein At2g38480 | 35.2 | 109 | 0.039 | -0 | -1.16 | 0.313 | 1.56 | 0.000 | -1.81 | 0.008 | 0.49 | 0.064 |
| Solyc07g065730 | Pentatricopeptide repeat-containing protein | 27.3.25 | 117 | 0.039 | 0.009 | -1.30 | 0.210 | 1.36 | 0.034 | -1.77 | 0.058 | 0.29 | 0.294 |
| Solyc02g089600 | Ribosomal RNA-processing protein 7 homolog A | 35.2 | 438 | 0.039 | 0.014 | -1.28 | 0.219 | 1.34 | 0.044 | -1.72 | 0.047 | 0.22 | 0.431 |
| Solyc08g079120 | NAC domain protein IPR003441 | 33.99 | 36 | -0.04 | -0.01 | 1.28 | 0.192 | -1.47 | 0.037 | 1.89 | 0.045 | -0.41 | 0.129 |
| Solyc11g010560 | Kinesin-like protein | 31.1 | 724 | 0.039 | -0.01 | -1.03 | 0.744 | 1.47 | 0.010 | -1.51 | 0.098 | 0.59 | 0.021 |
| Solyc04g008430 | Receptor like kinase, RLK | 30.2.11 | 108 | 0.039 | 0.015 | -1.30 | 0.260 | 1.34 | 0.068 | -1.73 | 0.032 | 0.41 | 0.129 |
| Solyc02g062180 | Oxidoreductase 2OG-Fe oxygenase family protein | 26.7 | 43 | 0.039 | -0.01 | -1.09 | 0.614 | 1.77 | 0.008 | -1.93 | 0.002 | 0.29 | 0.294 |
| Solyc07g065630 | Ubiquitin-protein ligase 1 | 29.5.11.4.1 | 665 | 0.039 | 0.008 | -1.18 | 0.278 | 1.42 | 0.017 | -1.68 | 0.025 | 0.38 | 0.162 |
| Solyc11g065890 | 1-acyl-sn-glycerol-3-phosphate acyltransferase | 11.3 | 212 | 0.039 | 0.017 | -1.43 | 0.001 | 1.31 | 0.066 | -1.86 | 0.046 | 0.27 | 0.33 |
| Solyc08g079840 | Subtilisin-like protease | 29.5.1 | 313 | 0.039 | -0.01 | -1.00 | 0.982 | 1.49 | 0.017 | -1.49 | 0.145 | 0.57 | 0.027 |
| Solyc02g093300 | DNA polymerase | 28.1 | 547 | 0.039 | 0.063 | -2.09 | 0.052 | 1.07 | 0.814 | -2.24 | 0.015 | 0.00 | 1 |
| Solyc01g108630 | Nitrite reductase | 12.1.2 | 207 | -0.04 | -0.03 | 1.61 | 0.190 | -1.45 | 0.069 | 2.33 | 0.012 | -0.29 | 0.294 |
| Solyc08g007080 | Inositol 1 4 5-trisphosphate 5-phosphatase | 28.1 | 193 | 0.039 | 0.021 | -1.88 | 0.090 | 1.39 | 0.131 | -2.61 | 0.016 | -0.06 | 0.832 |
| Solyc01g058170 | Agenet domain-containing protein | 35.2 | 440 | 0.038 | -0.01 | 1.01 | 0.927 | 1.59 | 0.006 | -1.57 | 0.097 | 0.61 | 0.016 |
| Solyc03g082990 | Tetratricopeptide repeat containing protein | 31.1 | 199 | 0.038 | 0.002 | -1.19 | 0.563 | 1.50 | 0.001 | -1.79 | 0.033 | 0.48 | 0.07 |
| Solyc02g011680 | Pentatricopeptide repeat-containing protein | 27.3.25 | 13 | 0.038 | -0.02 | 1.14 | 0.646 | 1.62 | 0.012 | -1.42 | 0.123 | 0.42 | 0.119 |
| Solyc11g006500 | Charged multivesicular body protein 5 | 27.3.71 | 350 | -0.04 | 0.004 | 1.05 | 0.858 | -1.60 | 0.020 | 1.68 | 0.105 | -0.52 | 0.047 |
| Solyc07g053540 | Fasciclin-like arabinogalactan protein 4 | 10.5.1.1 | 141 | 0.038 | -0.07 | 1.88 | 0.118 | 2.22 | 0.001 | -1.18 | 0.617 | 0.55 | 0.034 |
| Solyc04g082990 | ORF42f | 35.2 | 128 | 0.038 | -0.03 | 1.11 | 0.696 | 1.84 | 0.018 | -1.65 | 0.184 | 0.35 | 0.201 |
| Solyc08g042040 | Unknown Protein | 35.2 | 224 | 0.038 | -0.01 | -1.00 | 0.975 | 1.57 | 0.019 | -1.57 | 0.055 | 0.44 | 0.101 |
| Solyc06g008810 | Auxin F-box protein 5 | 17.2.2 | 518 | 0.038 | -0.01 | -1.11 | 0.458 | 1.70 | 0.000 | -1.89 | 0.000 | 0.49 | 0.064 |
| Solyc06g073060 | laa-amino acid hydrolase 6 | 17.2.1 | 616 | -0.04 | 0.003 | 1.09 | 0.646 | -1.45 | 0.013 | 1.57 | 0.050 | -0.34 | 0.215 |
| Solyc11g031970 | Unknown Protein | 35.2 | 339 | 0.038 | -0.02 | 1.10 | 0.452 | 1.52 | 0.015 | -1.38 | 0.214 | 0.65 | 0.009 |
| Solyc07g066520 | Os03g0659800 protein | 35.2 | 419 | 0.038 | -0.01 | 1.09 | 0.812 | 1.61 | 0.009 | -1.48 | 0.066 | 0.46 | 0.084 |
| Solyc11g008770 | LETM1 and EF-hand domain-containing protein 1 | 30.3 | 314 | 0.038 | 0.005 | -1.07 | 0.518 | 1.41 | 0.031 | -1.51 | 0.129 | 0.61 | 0.016 |
| Solyc02g061960 | La related protein-like | 35.2 | 495 | 0.037 | -0.01 | -1.05 | 0.694 | 1.47 | 0.002 | -1.54 | 0.044 | 0.63 | 0.012 |
| Solyc06g072960 | Lipid A export ATP-binding/permease protein msbA | 34.16 | 52 | 0.037 | -0.02 | 1.26 | 0.488 | 1.67 | 0.015 | -1.32 | 0.192 | 0.79 | 0 |

Supplementary Table S1. continued

| | | | | | | | | | | | | | |
|----------------|---|---------------|-----|-------|-------|-------|-------|-------|-------|-------|-------|-------|-------|
| Solyc08g076820 | BHLH transcription factor | 27.3.6 | 560 | 0.037 | 0.014 | -1.25 | 0.273 | 1.34 | 0.073 | -1.67 | 0.029 | 0.25 | 0.369 |
| Solyc03g119600 | NIMIN2c protein | 35.2 | 705 | -0.04 | -0 | 1.20 | 0.425 | -1.40 | 0.026 | 1.69 | 0.051 | -0.37 | 0.175 |
| Solyc01g099750 | Heparan-alpha-glucosaminide N-acetyltransferase | 35.2 | 123 | 0.037 | -0.03 | 1.04 | 0.944 | 1.92 | 0.019 | -1.85 | 0.033 | 0.42 | 0.119 |
| Solyc05g054870 | Unknown Protein | 35.2 | 293 | 0.037 | 0.011 | -1.26 | 0.245 | 1.48 | 0.046 | -1.86 | 0.046 | 0.42 | 0.119 |
| Solyc02g093410 | Protein kinase | 29.4 | 531 | -0.04 | 0.001 | 1.06 | 0.657 | -1.41 | 0.003 | 1.50 | 0.037 | -0.48 | 0.07 |
| Solyc02g068320 | 2-oxoglutarate-dependent dioxygenase | 17.5.1 | 710 | -0.04 | 0.009 | -1.03 | 0.865 | -1.49 | 0.006 | 1.44 | 0.046 | -0.58 | 0.023 |
| Solyc06g036060 | Zinc finger family protein | 27.3.11 | 453 | 0.037 | 0.024 | -1.44 | 0.041 | 1.25 | 0.139 | -1.80 | 0.050 | 0.17 | 0.545 |
| Solyc06g074630 | Cellulose synthase-like C6 glycosyltransferase family 2 | 10.2 | 708 | -0.04 | -0.01 | 1.50 | 0.120 | -1.40 | 0.034 | 2.10 | 0.010 | -0.27 | 0.33 |
| Solyc05g054530 | Genomic DNA chromosome 5 BAC clone F2O15 | 35.2 | 727 | 0.037 | -0 | -1.07 | 0.435 | 1.45 | 0.002 | -1.56 | 0.032 | 0.52 | 0.047 |
| Solyc04g082610 | Glutamate-gated kainate-type ion channel receptor | 30.1.1 | 550 | 0.037 | 0.007 | -1.13 | 0.531 | 1.42 | 0.021 | -1.60 | 0.026 | 0.62 | 0.014 |
| Solyc03g082900 | Glucan endo-1 3-beta-glucosidase | 26.4.1 | 414 | 0.037 | -0.02 | 1.16 | 0.339 | 1.50 | 0.014 | -1.30 | 0.274 | 0.74 | 0.002 |
| Solyc07g061920 | Glucan synthase like 3 | 3.6 | 468 | 0.037 | 0.02 | -1.52 | 0.023 | 1.23 | 0.157 | -1.87 | 0.034 | 0.14 | 0.619 |
| Solyc06g009440 | Pentatricopeptide repeat-containing protein | 35.2 | 273 | 0.036 | 0.018 | -1.74 | 0.006 | 1.29 | 0.116 | -2.24 | 0.031 | 0.19 | 0.498 |
| Solyc05g053070 | Unknown Protein | 35.2 | 753 | -0.04 | -0.01 | 1.33 | 0.179 | -1.36 | 0.054 | 1.81 | 0.024 | -0.39 | 0.151 |
| Solyc02g073580 | BZIP transcription factor | 27.3.67 | 613 | 0.036 | -0.16 | 8.82 | 0.031 | 4.34 | 0.013 | 2.03 | 0.339 | 0.32 | 0.245 |
| Solyc12g038770 | Unknown Protein | 35.2 | 591 | -0.04 | 0.061 | -2.16 | 0.011 | -2.03 | 0.003 | -1.07 | 0.831 | -0.64 | 0.01 |
| Solyc03g026120 | Dehydration-responsive family protein | 20.2.3 | 260 | -0.04 | 0.014 | -1.16 | 0.509 | -1.66 | 0.015 | 1.43 | 0.124 | -0.50 | 0.058 |
| Solyc04g005330 | Periodic tryptophan protein 1 homolog | 30.11 | 449 | 0.036 | 0.013 | -1.28 | 0.203 | 1.34 | 0.066 | -1.72 | 0.034 | 0.27 | 0.33 |
| Solyc10g086350 | Ras-related protein Rab-8A | 30.5 | 625 | -0.04 | -0.01 | 1.37 | 0.105 | -1.36 | 0.017 | 1.86 | 0.005 | -0.44 | 0.101 |
| Solyc08g023490 | Pentatricopeptide repeat-containing protein | 33.99 | 211 | 0.036 | -0.01 | 1.09 | 0.386 | 1.51 | 0.004 | -1.38 | 0.128 | 0.75 | 0.001 |
| Solyc12g039080 | Receptor-like kinase | 30.2.99 | 67 | 0.036 | -0.06 | 2.49 | 0.146 | 2.60 | 0.006 | -1.04 | 0.728 | 0.25 | 0.369 |
| Solyc01g044480 | Elongation factor P family protein expressed | 29.2.4 | 401 | 0.036 | 0.015 | -1.35 | 0.103 | 1.30 | 0.092 | -1.75 | 0.036 | 0.19 | 0.498 |
| Solyc02g081940 | RNA binding protein | 27.4 | 559 | 0.036 | 0.005 | -1.19 | 0.420 | 1.32 | 0.027 | -1.58 | 0.070 | 0.25 | 0.369 |
| Solyc11g008810 | Beta-hexosaminidase b | 29.7.5 | 408 | 0.035 | 0 | -1.11 | 0.682 | 1.49 | 0.019 | -1.65 | 0.028 | 0.20 | 0.475 |
| Solyc07g054620 | F-box/LRR-repeat protein 13 | 35.2 | 71 | 0.035 | 0.045 | -2.27 | 0.022 | 1.24 | 0.304 | -2.80 | 0.005 | -0.13 | 0.644 |
| Solyc06g071280 | Enhanced disease susceptibility 1 | 20.1.3 | 641 | -0.04 | -0.01 | 1.19 | 0.422 | -1.57 | 0.036 | 1.87 | 0.076 | -0.36 | 0.187 |
| Solyc02g085130 | Tubby-like F-box protein 5 | 29.5.11.4.3.2 | 640 | 0.035 | 0.009 | -1.28 | 0.027 | 1.34 | 0.015 | -1.72 | 0.019 | 0.35 | 0.201 |
| Solyc01g067220 | Unknown Protein | 35.2 | 197 | 0.035 | 0.026 | -1.44 | 0.141 | 1.27 | 0.163 | -1.83 | 0.021 | 0.15 | 0.594 |
| Solyc04g039980 | Lrr,resistance protein fragment | 20.1 | 373 | -0.04 | -0.06 | 2.37 | 0.011 | -1.11 | 0.540 | 2.64 | 0.004 | -0.04 | 0.887 |
| Solyc07g052590 | Pentatricopeptide repeat-containing protein | 27.3.25 | 248 | 0.035 | -0.01 | 1.01 | 0.956 | 1.41 | 0.024 | -1.40 | 0.170 | 0.43 | 0.11 |
| Solyc02g062990 | Glucosyltransferase | 16.8.3 | 305 | -0.04 | 0.11 | -3.10 | 0.080 | -2.63 | 0.007 | -1.18 | 0.925 | -0.48 | 0.07 |
| Solyc08g062610 | Cyclopropane-fatty-acyl-phospholipid synthase | 11.3.10 | 262 | 0.035 | -0.02 | 1.01 | 0.953 | 1.52 | 0.006 | -1.51 | 0.085 | 0.50 | 0.058 |
| Solyc03g096870 | WD repeat-containing protein 5 homolog | 33.99 | 741 | 0.035 | -0.01 | 1.03 | 0.771 | 1.47 | 0.006 | -1.43 | 0.190 | 0.40 | 0.14 |
| Solyc06g083520 | Nucleolar GTP-binding protein 2 | 30.5 | 564 | 0.035 | 0.005 | -1.15 | 0.585 | 1.50 | 0.025 | -1.72 | 0.014 | 0.22 | 0.431 |
| Solyc07g006740 | Multidrug resistance protein mdtK | 34.99 | 16 | -0.04 | -0.02 | 1.37 | 0.025 | -1.32 | 0.082 | 1.81 | 0.045 | -0.38 | 0.162 |
| Solyc03g059160 | CASTOR protein | 35.2 | 166 | 0.035 | 0.042 | -1.83 | 0.012 | 1.07 | 0.595 | -1.95 | 0.027 | 0.00 | 1 |
| Solyc03g044370 | OTU domain containing protein | 29.5.3 | 406 | 0.035 | -0.01 | 1.07 | 0.648 | 1.43 | 0.012 | -1.34 | 0.157 | 0.62 | 0.014 |
| Solyc06g007270 | Fertility restorer | 35.2 | 40 | 0.035 | 0.056 | -2.22 | 0.014 | 1.04 | 0.826 | -2.31 | 0.006 | -0.06 | 0.832 |
| Solyc01g100280 | ATP-DEPENDENT DNA HELICASE | 28.99 | 416 | 0.035 | 0.014 | -1.31 | 0.072 | 1.34 | 0.017 | -1.75 | 0.006 | 0.34 | 0.215 |

Supplementary Table S1. continued

| | | | | | | | | | | | | | |
|----------------|---|-------------|-----|-------|-------|-------|-------|-------|-------|-------|-------|-------|-------|
| Solyc05g051460 | Homeobox-leucine zipper protein | 27.3.22 | 351 | -0.04 | 0.002 | 1.14 | 0.514 | -1.40 | 0.006 | 1.60 | 0.008 | -0.44 | 0.101 |
| Solyc01g099220 | DNA polymerase | 28.1 | 422 | 0.034 | -0.01 | 1.04 | 0.922 | 1.44 | 0.024 | -1.39 | 0.136 | 0.67 | 0.006 |
| Solyc12g044220 | AT1G15240 | 35.2 | 442 | 0.034 | -0.01 | 1.05 | 0.491 | 1.47 | 0.008 | -1.40 | 0.151 | 0.64 | 0.01 |
| Solyc06g084220 | Unknown Protein | 20.2.1 | 311 | -0.03 | 0.002 | 1.03 | 0.668 | -1.44 | 0.004 | 1.48 | 0.086 | -0.46 | 0.084 |
| Solyc03g062930 | 5'' exonuclease | 35.2 | 463 | 0.034 | 0.018 | -1.62 | 0.094 | 1.25 | 0.200 | -2.03 | 0.009 | 0.23 | 0.41 |
| Solyc05g050340 | WRKY transcription factor 6 | 27.3.32 | 335 | -0.03 | -0.01 | 1.09 | 0.702 | -1.54 | 0.025 | 1.68 | 0.086 | -0.43 | 0.11 |
| Solyc09g011380 | BEL1-like homeodomain protein 9 | 27.3.22 | 158 | 0.034 | -0.01 | -1.02 | 0.852 | 1.49 | 0.005 | -1.53 | 0.058 | 0.45 | 0.092 |
| Solyc08g062340 | Class II small heat shock protein Le-HSP17.6 | 20.2.1 | 329 | -0.03 | 0.032 | -1.36 | 0.153 | -1.72 | 0.018 | 1.27 | 0.543 | -0.65 | 0.009 |
| Solyc10g086750 | Unknown Protein | 35.2 | 258 | 0.034 | 0.023 | -1.44 | 0.086 | 1.26 | 0.142 | -1.82 | 0.033 | 0.32 | 0.245 |
| Solyc02g063390 | DUF1295 domain protein | 35.2 | 683 | -0.03 | -0.01 | 1.32 | 0.309 | -1.33 | 0.032 | 1.75 | 0.008 | -0.12 | 0.67 |
| Solyc10g049890 | Phosphoglycerate dehydrogenase | 13.1.5.1.1 | 471 | 0.034 | 0 | -1.05 | 0.685 | 1.40 | 0.016 | -1.47 | 0.114 | 0.58 | 0.023 |
| Solyc04g007070 | Cc-nbs-lrr, resistance protein | 20.1 | 685 | -0.03 | -0.04 | 2.03 | 0.092 | -1.21 | 0.350 | 2.45 | 0.017 | -0.24 | 0.389 |
| Solyc07g041520 | RNA polymerase-associated protein Ctr9 homolog | 35.2 | 563 | 0.034 | 0.025 | -1.48 | 0.072 | 1.22 | 0.213 | -1.81 | 0.033 | 0.26 | 0.349 |
| Solyc07g063360 | Tir, resistance protein fragment | 20.1.7 | 87 | -0.03 | -0.04 | 1.71 | 0.040 | -1.22 | 0.382 | 2.09 | 0.052 | -0.14 | 0.619 |
| Solyc01g080020 | Xylanase inhibitor | 29.5.4 | 701 | 0.034 | -0.05 | 1.37 | 0.138 | 1.64 | 0.003 | -1.20 | 0.719 | 0.63 | 0.012 |
| Solyc04g071140 | Decarboxylase family protein | 13.2.7 | 396 | 0.034 | 0.005 | -1.24 | 0.276 | 1.41 | 0.021 | -1.74 | 0.003 | 0.20 | 0.475 |
| Solyc01g079650 | CTP synthase-like protein | 23.1.1.10 | 113 | 0.034 | -0.01 | 1.16 | 0.179 | 1.51 | 0.012 | -1.30 | 0.268 | 0.70 | 0.004 |
| Solyc12g008420 | RNA-dependent RNA polymerase family protein | 27.2 | 561 | 0.034 | -0.02 | -1.05 | 0.939 | 1.41 | 0.008 | -1.48 | 0.203 | 0.40 | 0.14 |
| Solyc05g014700 | Acid phosphatase/vanadium-dependent haloperoxidase related | 35.2 | 204 | -0.03 | 0.022 | -1.15 | 0.517 | -1.58 | 0.002 | 1.38 | 0.051 | -0.55 | 0.034 |
| Solyc06g064940 | Phosphatidylinositol transfer protein SFH5 | 34.99 | 661 | 0.034 | -0.02 | -1.06 | 0.841 | 1.52 | 0.000 | -1.61 | 0.176 | 0.26 | 0.349 |
| Solyc03g034010 | U-box domain-containing protein 5 | 29.5.11.4.2 | 365 | 0.034 | 0.027 | -1.55 | 0.184 | 1.28 | 0.192 | -1.97 | 0.001 | 0.20 | 0.475 |
| Solyc05g052170 | Acetyltransferase GNAT family protein | 26.24 | 214 | 0.033 | 0.014 | -1.34 | 0.145 | 1.38 | 0.017 | -1.85 | 0.006 | 0.26 | 0.349 |
| Solyc03g044550 | Unknown Protein | 35.2 | 232 | -0.03 | -0.05 | 1.93 | 0.068 | -1.19 | 0.300 | 2.29 | 0.018 | -0.11 | 0.696 |
| Solyc06g054240 | 5'' nucleotidase surE | 26.13 | 182 | 0.033 | -0.01 | -1.01 | 0.871 | 1.46 | 0.029 | -1.49 | 0.124 | 0.41 | 0.129 |
| Solyc01g106100 | DUF593-containing protein 2 | 35.2 | 407 | 0.033 | -0 | -1.14 | 0.280 | 1.35 | 0.015 | -1.54 | 0.054 | 0.34 | 0.215 |
| Solyc08g077430 | Glycine-rich protein | 35.2 | 630 | 0.033 | 0.023 | -1.49 | 0.044 | 1.28 | 0.063 | -1.91 | 0.009 | 0.20 | 0.475 |
| Solyc12g044440 | Unknown Protein | 30.5 | 513 | 0.033 | 0.032 | -1.59 | 0.032 | 1.19 | 0.192 | -1.89 | 0.006 | 0.05 | 0.86 |
| Solyc01g099230 | Zinc finger protein VAR3, chloroplastic | 30.5 | 554 | 0.033 | 0.007 | -1.18 | 0.535 | 1.35 | 0.024 | -1.59 | 0.045 | 0.41 | 0.129 |
| Solyc01g105080 | Receptor like kinase, RLK | 30.2.3 | 144 | -0.03 | -0.06 | 3.02 | 0.021 | -1.03 | 0.825 | 3.10 | 0.004 | 0.07 | 0.804 |
| Solyc03g113760 | E2F transcription factor-like protein | 27.3.18 | 384 | 0.033 | 0.011 | -1.25 | 0.092 | 1.29 | 0.054 | -1.61 | 0.041 | 0.21 | 0.453 |
| Solyc05g009710 | Mediator of RNA polymerase II transcription subunit 25 | 30.11 | 565 | 0.033 | 0.02 | -1.41 | 0.089 | 1.23 | 0.142 | -1.74 | 0.022 | 0.17 | 0.545 |
| Solyc12g014500 | S-adenosyl-L-methionine salicylic acid carboxyl methyltransferase | 17.8.1 | 142 | -0.03 | 0.011 | -1.04 | 0.828 | -1.47 | 0.010 | 1.41 | 0.076 | -0.60 | 0.018 |
| Solyc05g048810 | tRNA-specific adenosine deaminase | 27.1 | 31 | -0.03 | 0.023 | -1.32 | 0.358 | -1.70 | 0.002 | 1.29 | 0.125 | -0.53 | 0.042 |
| Solyc04g049360 | 4-amino-4-deoxychorismate synthase component I | 13.1.6.5.1 | 330 | 0.033 | 0.033 | -1.88 | 0.022 | 1.12 | 0.465 | -2.11 | 0.016 | 0.02 | 0.944 |
| Solyc10g018030 | Homeobox-leucine zipper protein ROC7 | 27.3.22 | 26 | -0.03 | -0.02 | 1.58 | 0.023 | -1.42 | 0.053 | 2.24 | 0.015 | -0.31 | 0.261 |
| Solyc01g010370 | Dehydration-responsive protein-like | 20.2.3 | 649 | 0.033 | -0 | -1.15 | 0.444 | 1.33 | 0.011 | -1.53 | 0.073 | 0.37 | 0.175 |
| Solyc06g082130 | Pyruvate decarboxylase 2 | 5.2 | 118 | 0.033 | 0.006 | -1.35 | 0.213 | 1.36 | 0.033 | -1.84 | 0.023 | 0.20 | 0.475 |

Supplementary Table S1. continued

| | | | | | | | | | | | | | |
|----------------|---|-------------|-----|-------|-------|-------|-------|-------|-------|-------|-------|-------|-------|
| Solyc11g017130 | Forkhead-associated domain-containing protein | 27.3.48 | 413 | 0.033 | 0.008 | -1.37 | 0.246 | 1.26 | 0.062 | -1.73 | 0.049 | 0.04 | 0.887 |
| Solyc07g056480 | Glutathione S-transferase-like protein | 26.9 | 562 | -0.03 | 0.001 | 1.26 | 0.367 | -1.36 | 0.033 | 1.72 | 0.014 | -0.22 | 0.431 |
| Solyc02g091710 | von Willebrand factor type A domain-containing protein | 29.5.11.4.2 | 595 | 0.032 | -0.02 | 1.11 | 0.430 | 1.45 | 0.005 | -1.31 | 0.191 | 0.74 | 0.002 |
| Solyc03g116900 | Manganese transporter MntH | 34.12 | 473 | 0.032 | 0.012 | -1.44 | 0.011 | 1.32 | 0.024 | -1.90 | 0.008 | 0.25 | 0.369 |
| Solyc11g068370 | BZIP transcription factor | 27.3.35 | 116 | -0.03 | 0.053 | -1.61 | 0.273 | -2.16 | 0.007 | 1.34 | 0.379 | -0.68 | 0.005 |
| Solyc03g078770 | UDP-glucuronosyltransferase | 26.2 | 320 | 0.032 | -0.06 | 1.62 | 0.076 | 1.74 | 0.020 | -1.07 | 0.676 | 0.56 | 0.03 |
| Solyc11g066150 | Bifunctional polymyxin resistance protein ArnA | 10.1.5 | 195 | -0.03 | -0.06 | 2.49 | 0.003 | -1.14 | 0.709 | 2.84 | 0.022 | -0.10 | 0.723 |
| Solyc10g076410 | Abscisic acid receptor PYL4 | 20.2.99 | 161 | 0.032 | 0.018 | -1.62 | 0.112 | 1.22 | 0.192 | -1.98 | 0.028 | -0.04 | 0.887 |
| Solyc06g065800 | Mitochondrial glycoprotein family protein | 35.2 | 155 | 0.032 | -0.01 | 1.01 | 0.930 | 1.49 | 0.010 | -1.47 | 0.012 | 0.49 | 0.064 |
| Solyc02g061910 | Unknown Protein | 27.3.27 | 115 | 0.032 | 0.017 | -1.47 | 0.133 | 1.31 | 0.167 | -1.93 | 0.018 | 0.07 | 0.804 |
| Solyc07g043610 | Auxin response factor 6 | 27.3.4 | 526 | 0.032 | 0.005 | -1.15 | 0.386 | 1.37 | 0.024 | -1.57 | 0.094 | 0.49 | 0.064 |
| Solyc12g056630 | Holocarboxylase synthetase | 35.2 | 643 | 0.032 | 0.007 | -1.12 | 0.443 | 1.38 | 0.011 | -1.55 | 0.014 | 0.52 | 0.047 |
| Solyc05g054860 | Pto-like, Serine/threonine kinase protein, resistance protein | 29.4.1.57 | 430 | 0.032 | -0.04 | 1.26 | 0.200 | 1.69 | 0.001 | -1.34 | 0.273 | 0.55 | 0.034 |
| Solyc12g007070 | Heat stress transcription factor A3 | 20.2.1 | 428 | 0.032 | 0.035 | -2.03 | 0.000 | 1.15 | 0.175 | -2.33 | 0.003 | -0.02 | 0.944 |
| Solyc05g005990 | Solute carrier family 15 member 2 | 34.13 | 525 | -0.03 | 0 | 1.16 | 0.436 | -1.33 | 0.033 | 1.55 | 0.055 | -0.26 | 0.349 |
| Solyc09g057870 | Protein FAR1-RELATED SEQUENCE 5 | 30.11 | 309 | 0.032 | 0.002 | -1.12 | 0.380 | 1.36 | 0.024 | -1.52 | 0.050 | 0.46 | 0.084 |
| Solyc02g062760 | GATA transcription factor 19 | 27.3.9 | 163 | 0.032 | 0.006 | -1.42 | 0.059 | 1.40 | 0.019 | -1.99 | 0.009 | 0.27 | 0.33 |
| Solyc05g053990 | Cc-nbs-lrr, resistance protein | 20.1 | 654 | 0.032 | -0.03 | 1.18 | 0.680 | 1.68 | 0.016 | -1.42 | 0.110 | 0.37 | 0.175 |
| Solyc04g077850 | U-box domain-containing protein 4 | 29.5.11.4.2 | 439 | -0.03 | 0.023 | -1.26 | 0.118 | -1.53 | 0.008 | 1.21 | 0.452 | -0.52 | 0.047 |
| Solyc08g083190 | Hydrolase alpha/beta fold family protein expressed | 28.1 | 210 | 0.031 | 0.051 | -2.03 | 0.069 | 1.18 | 0.634 | -2.40 | 0.000 | 0.16 | 0.569 |
| Solyc01g107250 | LRR receptor-like serine/threonine-protein kinase, RLP | 30.2.11 | 372 | -0.03 | -0.01 | 1.13 | 0.498 | -1.32 | 0.035 | 1.49 | 0.058 | -0.45 | 0.092 |
| Solyc11g069600 | Inter-alpha-trypsin inhibitor heavy chain H4 | 29.5.11.4.2 | 699 | 0.031 | -0.01 | -1.01 | 0.935 | 1.43 | 0.003 | -1.44 | 0.040 | 0.74 | 0.002 |
| Solyc02g079010 | Cotton fiber expressed protein 1 | 35.2 | 234 | -0.03 | -0.01 | 1.28 | 0.231 | -1.31 | 0.055 | 1.68 | 0.038 | -0.39 | 0.151 |
| Solyc11g066330 | Nodulin family protein | 33.99 | 447 | 0.031 | -0.03 | 1.03 | 0.833 | 1.52 | 0.013 | -1.48 | 0.169 | 0.37 | 0.175 |
| Solyc09g098310 | Unknown Protein | 35.2 | 497 | -0.03 | -0.03 | 1.65 | 0.061 | -1.20 | 0.308 | 1.97 | 0.025 | -0.18 | 0.521 |
| Solyc01g066990 | Unknown Protein | 35.2 | 579 | 0.031 | 0.012 | -1.20 | 0.236 | 1.29 | 0.053 | -1.54 | 0.038 | 0.39 | 0.151 |
| Solyc09g057920 | N-alpha-acetyltransferase 25, NatB auxiliary subunit | 35.2 | 242 | 0.031 | 0.007 | -1.16 | 0.254 | 1.28 | 0.034 | -1.49 | 0.076 | 0.33 | 0.23 |
| Solyc03g025600 | Pectinacylesterase like protein | 10.8.2 | 512 | 0.031 | -0.02 | 1.14 | 0.465 | 1.51 | 0.004 | -1.33 | 0.140 | 0.66 | 0.007 |
| Solyc09g018610 | Unknown Protein | 35.2 | 165 | -0.03 | -0.04 | 2.07 | 0.007 | -1.13 | 0.766 | 2.35 | 0.053 | -0.15 | 0.594 |
| Solyc06g082920 | Receptor like kinase, RLK | 30.2.11 | 569 | -0.03 | -0.01 | 1.31 | 0.309 | -1.32 | 0.078 | 1.73 | 0.025 | -0.47 | 0.077 |
| Solyc01g014120 | Unknown Protein | 35.2 | 63 | 0.031 | 0 | -1.20 | 0.314 | 1.32 | 0.028 | -1.58 | 0.027 | 0.41 | 0.129 |
| Solyc07g032170 | Abhydrolase domain-containing protein 5 | 35.2 | 634 | 0.031 | 0.035 | -1.61 | 0.076 | 1.17 | 0.401 | -1.88 | 0.005 | 0.04 | 0.887 |
| Solyc02g089530 | Unknown Protein | 35.2 | 150 | 0.031 | 0.021 | -1.56 | 0.070 | 1.17 | 0.215 | -1.83 | 0.023 | 0.17 | 0.545 |
| Solyc03g113300 | Short-chain dehydrogenase/reductase SDR | 26.22 | 678 | -0.03 | 0.013 | -1.01 | 0.997 | -1.48 | 0.010 | 1.47 | 0.120 | -0.60 | 0.018 |
| Solyc03g119330 | 26S proteasome regulatory subunit | 35.2 | 323 | 0.031 | -0.01 | 1.01 | 0.928 | 1.40 | 0.006 | -1.39 | 0.092 | 0.62 | 0.014 |
| Solyc01g100000 | F-box protein PP2-B1 | 31.1 | 249 | 0.031 | 0.015 | -1.36 | 0.083 | 1.32 | 0.025 | -1.79 | 0.004 | 0.20 | 0.475 |
| Solyc12g056820 | Laccase | 16.10 | 8 | -0.03 | -0.03 | 1.70 | 0.072 | -1.23 | 0.195 | 2.08 | 0.018 | -0.05 | 0.86 |

Supplementary Table S1. continued

| | | | | | | | | | | | | | |
|----------------|--|-------------|-----|-------|-------|-------|-------|-------|-------|-------|-------|-------|-------|
| Solyc09g065690 | Transcription factor jumonji | 35.2 | 567 | 0.03 | 0.01 | -1.25 | 0.122 | 1.34 | 0.010 | -1.67 | 0.002 | 0.46 | 0.084 |
| Solyc04g011630 | GRAS family transcription factor | 27.3.21 | 527 | 0.03 | 0.007 | -1.15 | 0.422 | 1.32 | 0.022 | -1.51 | 0.026 | 0.31 | 0.261 |
| Solyc11g017470 | NAC domain protein IPR003441 | 33.99 | 618 | -0.03 | 0.02 | -1.19 | 0.228 | -1.58 | 0.003 | 1.32 | 0.215 | -0.56 | 0.03 |
| Solyc08g079760 | Unknown Protein | 35.2 | 601 | 0.03 | 0.008 | -1.34 | 0.230 | 1.26 | 0.043 | -1.69 | 0.020 | 0.04 | 0.887 |
| Solyc02g087040 | RING finger protein | 29.5.11.4.2 | 192 | 0.03 | -0 | -1.05 | 0.668 | 1.31 | 0.027 | -1.38 | 0.127 | 0.50 | 0.058 |
| Solyc11g005720 | VQ motif family protein | 35.2 | 399 | -0.03 | 0.003 | 1.07 | 0.672 | -1.39 | 0.008 | 1.48 | 0.043 | -0.43 | 0.11 |
| Solyc03g025390 | Retinol dehydrogenase 12 | 26.22 | 568 | -0.03 | 0.011 | -1.03 | 0.942 | -1.37 | 0.003 | 1.33 | 0.119 | -0.48 | 0.07 |
| Solyc08g076320 | Cellulose synthase-like protein | 10.2.1 | 745 | 0.03 | -0.01 | -1.08 | 0.697 | 1.31 | 0.013 | -1.41 | 0.121 | 0.44 | 0.101 |
| Solyc04g016180 | Glycosyltransferase | 35.2 | 173 | 0.03 | 0.011 | -1.16 | 0.224 | 1.31 | 0.048 | -1.52 | 0.084 | 0.34 | 0.215 |
| Solyc02g090340 | Cytochrome P450 | 26.10 | 744 | -0.03 | 0.02 | 1.03 | 0.996 | -1.47 | 0.019 | 1.52 | 0.056 | -0.29 | 0.294 |
| Solyc06g074530 | Prephenate dehydratase | 13.1.6.3.1 | 728 | -0.03 | 0.005 | 1.06 | 0.824 | -1.38 | 0.012 | 1.46 | 0.031 | -0.37 | 0.175 |
| Solyc09g075530 | Soluble NSF Attachment Protein | 31.4 | 96 | 0.03 | 0.041 | -2.03 | 0.014 | 1.10 | 0.568 | -2.23 | 0.007 | 0.04 | 0.887 |
| Solyc09g075230 | POT family domain containing protein expressed | 35.2 | 604 | -0.03 | -0 | 1.17 | 0.178 | -1.33 | 0.009 | 1.56 | 0.014 | -0.40 | 0.14 |
| Solyc08g075010 | Glucose-repressible alcohol dehydrogenase transcriptional effector | 28.1 | 502 | 0.029 | 0.039 | -1.76 | 0.029 | 1.09 | 0.526 | -1.92 | 0.017 | -0.11 | 0.696 |
| Solyc10g079350 | UDP-glucosyltransferase HvUGT5876 | 26.2 | 254 | -0.03 | 0.02 | 1.04 | 0.902 | -1.97 | 0.016 | 2.04 | 0.125 | -0.45 | 0.092 |
| Solyc10g084040 | Thylakoid lumen 15.0-kDa protein | 35.2 | 332 | -0.03 | -0.02 | 1.36 | 0.200 | -1.29 | 0.101 | 1.76 | 0.043 | -0.42 | 0.119 |
| Solyc04g058170 | Calmodulin-like protein | 30.3 | 64 | -0.03 | 0.027 | -1.31 | 0.258 | -1.55 | 0.000 | 1.18 | 0.271 | -0.69 | 0.004 |
| Solyc03g007330 | Cell division protease ftsH homolog | 29.5.7 | 722 | 0.029 | 0.006 | -1.15 | 0.417 | 1.28 | 0.058 | -1.47 | 0.043 | 0.33 | 0.23 |
| Solyc01g067710 | Sodium/hydrogen exchanger | 34.14 | 677 | 0.029 | 0.039 | -1.60 | 0.079 | 1.17 | 0.341 | -1.88 | 0.004 | 0.07 | 0.804 |
| Solyc10g006870 | Pto-like, Serine/threonine kinase protein | 29.4.1.57 | 574 | 0.029 | 0.002 | -1.18 | 0.373 | 1.28 | 0.021 | -1.50 | 0.039 | 0.23 | 0.41 |
| Solyc04g054260 | Cytochrome P450 | 26.10 | 95 | 0.029 | 0.021 | -1.53 | 0.020 | 1.28 | 0.061 | -1.97 | 0.023 | 0.17 | 0.545 |
| Solyc03g033850 | Syntaxin 81 | 31.4 | 501 | -0.03 | 0.021 | -1.29 | 0.269 | -1.53 | 0.014 | 1.19 | 0.410 | -0.51 | 0.052 |
| Solyc05g012210 | Ninja-family protein 1 | 29.3.1 | 694 | -0.03 | 0.026 | -1.31 | 0.295 | -1.62 | 0.001 | 1.24 | 0.324 | -0.56 | 0.03 |
| Solyc01g101250 | D111/G-patch domain-containing protein | 35.2 | 127 | 0.029 | 0.062 | -2.29 | 0.021 | -1.04 | 0.918 | -2.21 | 0.026 | -0.07 | 0.804 |
| Solyc03g059110 | Unknown Protein | 35.2 | 686 | 0.029 | 0.012 | -1.38 | 0.032 | 1.19 | 0.178 | -1.64 | 0.052 | 0.28 | 0.312 |
| Solyc02g093020 | Os06g0524700 protein | 17.5.2 | 337 | -0.03 | -0.02 | 1.32 | 0.125 | -1.28 | 0.098 | 1.69 | 0.039 | -0.35 | 0.201 |
| Solyc09g059990 | Zinc finger family protein | 29.5.11.4.2 | 503 | 0.029 | -0.02 | 1.11 | 0.405 | 1.43 | 0.001 | -1.29 | 0.183 | 0.64 | 0.01 |
| Solyc04g014610 | Armadillo repeat-containing protein 7 | 35.2 | 46 | 0.029 | 0.004 | -1.18 | 0.346 | 1.29 | 0.034 | -1.52 | 0.044 | 0.27 | 0.33 |
| Solyc12g099360 | Acyl-CoA synthetase/AMP-acid ligase II | 11.1.8 | 59 | -0.03 | -0.03 | 1.62 | 0.006 | -1.25 | 0.156 | 2.02 | 0.021 | -0.14 | 0.619 |
| Solyc01g079520 | DNA mismatch repair protein muts | 28.2 | 605 | 0.029 | 0.019 | -1.35 | 0.077 | 1.20 | 0.124 | -1.62 | 0.014 | 0.19 | 0.498 |
| Solyc04g057940 | U-box domain-containing protein | 29.5.11.4.2 | 241 | 0.029 | -0.08 | 2.65 | 0.064 | 2.51 | 0.004 | 1.05 | 0.707 | 0.62 | 0.014 |
| Solyc04g074410 | Os06g0220000 protein | 30.1.1 | 751 | 0.029 | 0.01 | -1.37 | 0.149 | 1.25 | 0.102 | -1.72 | 0.027 | 0.05 | 0.86 |
| Solyc06g059900 | Unknown Protein | 35.2 | 98 | -0.03 | 0 | 1.06 | 0.735 | -1.45 | 0.013 | 1.53 | 0.065 | -0.53 | 0.042 |
| Solyc03g083000 | AT2G46550 protein | 35.2 | 222 | -0.03 | 0.008 | -1.12 | 0.327 | -1.46 | 0.002 | 1.30 | 0.140 | -0.58 | 0.023 |
| Solyc05g015980 | Unknown Protein | 35.2 | 472 | 0.029 | 0.001 | -1.22 | 0.317 | 1.31 | 0.013 | -1.60 | 0.042 | 0.20 | 0.475 |
| Solyc09g008850 | Uridylate kinase | 23.4.3 | 247 | 0.029 | -0.02 | 1.23 | 0.483 | 1.56 | 0.014 | -1.27 | 0.188 | 0.46 | 0.084 |
| Solyc05g054170 | Scarecrow-like 1 transcription factor | 27.3.21 | 669 | -0.03 | -0 | 1.11 | 0.574 | -1.36 | 0.011 | 1.51 | 0.015 | -0.56 | 0.03 |
| Solyc06g054630 | Ethylene-responsive transcription factor 1 | 27.3.3 | 83 | -0.03 | -0.02 | 1.31 | 0.139 | -1.30 | 0.038 | 1.70 | 0.022 | -0.36 | 0.187 |
| Solyc09g074210 | Endonuclease/exonuclease/phosphatase family protein | 28.1 | 289 | 0.028 | -0.05 | 1.36 | 0.380 | 1.82 | 0.006 | -1.33 | 0.241 | 0.45 | 0.092 |
| Solyc11g065210 | Ubiquitin carboxyl-terminal hydrolase | 29.5.11.5 | 437 | 0.028 | 0.017 | -1.26 | 0.076 | 1.21 | 0.080 | -1.52 | 0.032 | 0.25 | 0.369 |

Supplementary Table S1. continued

| | | | | | | | | | | | | | |
|----------------|--|------------|-----|-------|-------|-------|-------|-------|-------|-------|-------|-------|-------|
| Solyc10g084250 | Receptor-like kinase | 30.2.17 | 431 | 0.028 | -0.03 | 1.11 | 0.550 | 1.46 | 0.010 | -1.31 | 0.254 | 0.41 | 0.129 |
| Solyc07g053520 | Pentatricopeptide repeat-containing protein | 29.4 | 137 | 0.028 | 0.005 | -1.14 | 0.380 | 1.31 | 0.010 | -1.49 | 0.022 | 0.34 | 0.215 |
| Solyc12g014040 | Chloroplast protein HCF243 | 35.2 | 535 | 0.028 | -0 | -1.02 | 0.790 | 1.37 | 0.010 | -1.40 | 0.046 | 0.61 | 0.016 |
| Solyc12g094660 | Cc-nbs-lrr, resistance protein | 20.1 | 334 | -0.03 | -0.04 | 1.94 | 0.027 | -1.20 | 0.426 | 2.32 | 0.031 | -0.27 | 0.33 |
| Solyc02g089560 | Pentatricopeptide repeat-containing protein | 35.2 | 612 | 0.028 | 0.013 | -1.25 | 0.215 | 1.23 | 0.093 | -1.55 | 0.033 | 0.34 | 0.215 |
| Solyc04g078670 | NAC domain transcription factor | 33.99 | 215 | -0.03 | 0.047 | -1.67 | 0.043 | -1.78 | 0.001 | 1.07 | 0.748 | -0.65 | 0.009 |
| Solyc06g007120 | 1-phosphatidylinositol-4 5-bisphosphate phosphodiesterase | 30.4.4 | 674 | -0.03 | 0.018 | -1.14 | 0.278 | -1.51 | 0.007 | 1.32 | 0.221 | -0.59 | 0.021 |
| Solyc08g023460 | Cell cycle control protein | 34.1 | 266 | 0.028 | 0.018 | -1.31 | 0.100 | 1.21 | 0.116 | -1.58 | 0.049 | 0.28 | 0.312 |
| Solyc08g066700 | Polyribonucleotide nucleotidyltransferase | 27.1.19 | 723 | 0.028 | 0.007 | -1.15 | 0.545 | 1.30 | 0.022 | -1.50 | 0.033 | 0.28 | 0.312 |
| Solyc06g007620 | POT family domain containing protein expressed | 35.2 | 510 | 0.028 | -0.01 | -1.04 | 0.629 | 1.37 | 0.002 | -1.43 | 0.039 | 0.53 | 0.042 |
| Solyc09g065160 | Dynamin family protein | 30.5 | 555 | 0.028 | 0.002 | -1.11 | 0.333 | 1.30 | 0.030 | -1.45 | 0.078 | 0.56 | 0.03 |
| Solyc09g065590 | Os12g0604200 protein | 35.2 | 720 | 0.028 | 0.008 | -1.13 | 0.319 | 1.26 | 0.039 | -1.43 | 0.037 | 0.41 | 0.129 |
| Solyc02g092670 | Subtilisin-like protease | 29.5.1 | 491 | 0.028 | -0.05 | 1.61 | 0.096 | 1.65 | 0.014 | -1.03 | 0.788 | 0.56 | 0.03 |
| Solyc10g055700 | Pentatricopeptide repeat-containing protein | 35.2 | 153 | 0.028 | 0 | -1.04 | 0.702 | 1.39 | 0.002 | -1.44 | 0.042 | 0.69 | 0.004 |
| Solyc02g085010 | Unknown Protein | 35.2 | 169 | -0.03 | 0.012 | -1.03 | 0.833 | -1.44 | 0.015 | 1.40 | 0.093 | -0.35 | 0.201 |
| Solyc09g057680 | Receptor like kinase, RLK | 29.4.1.57 | 97 | -0.03 | -0.04 | 2.31 | 0.032 | -1.11 | 0.608 | 2.56 | 0.013 | -0.03 | 0.915 |
| Solyc02g032650 | Nbs-lrr, resistance protein | 20.1.7 | 275 | -0.03 | 0.096 | -3.07 | 0.029 | -2.60 | 0.019 | -1.18 | 0.571 | -0.51 | 0.052 |
| Solyc09g083250 | AT5g02940/F9G14_250 | 35.2 | 256 | 0.028 | 0.009 | -1.25 | 0.178 | 1.32 | 0.028 | -1.66 | 0.006 | 0.18 | 0.521 |
| Solyc02g078230 | Glucan synthase like 1 | 3.6 | 614 | 0.028 | -0 | -1.11 | 0.541 | 1.27 | 0.016 | -1.41 | 0.104 | 0.44 | 0.101 |
| Solyc01g095700 | Abscisic acid receptor PYL8 | 20.2.99 | 125 | -0.03 | -0.04 | 1.75 | 0.007 | -1.09 | 0.497 | 1.92 | 0.008 | -0.10 | 0.723 |
| Solyc02g079180 | Heat shock transcription factor 1 | 20.2.1 | 21 | 0.027 | 0.025 | -1.49 | 0.059 | 1.20 | 0.143 | -1.79 | 0.002 | 0.28 | 0.312 |
| Solyc01g096940 | Receptor like kinase, RLK | 29.4.1.57 | 593 | 0.027 | -0.01 | 1.07 | 0.490 | 1.45 | 0.001 | -1.36 | 0.041 | 0.62 | 0.014 |
| Solyc08g016430 | Unknown Protein | 35.2 | 583 | 0.027 | 0.016 | -1.29 | 0.061 | 1.23 | 0.078 | -1.58 | 0.047 | 0.38 | 0.162 |
| Solyc10g086500 | 3-oxo-5-alpha-steroid 4-dehydrogenase family protein expressed | 17.3.1.1.1 | 750 | -0.03 | 0.006 | 1.14 | 0.501 | -1.31 | 0.014 | 1.49 | 0.022 | -0.19 | 0.498 |
| Solyc08g080570 | UDP-glucose 4-epimerase | 10.1.2 | 719 | -0.03 | -0.03 | 1.63 | 0.030 | -1.11 | 0.289 | 1.82 | 0.003 | -0.09 | 0.75 |
| Solyc00g031360 | D-serine dehydratase | 35.2 | 202 | -0.03 | -0.01 | 1.29 | 0.040 | -1.31 | 0.010 | 1.68 | 0.006 | -0.35 | 0.201 |
| Solyc09g008060 | UDP-glucosyltransferase family 1 protein | 26.2 | 552 | -0.03 | 0.006 | 1.02 | 0.987 | -1.36 | 0.023 | 1.39 | 0.054 | -0.45 | 0.092 |
| Solyc03g093450 | Receptor-like protein kinase | 29.4.1.57 | 225 | -0.03 | 0.029 | -1.25 | 0.382 | -1.59 | 0.007 | 1.28 | 0.212 | -0.62 | 0.014 |
| Solyc11g069470 | Class III homeodomain-leucine zipper | 27.3.22 | 749 | 0.027 | -0 | -1.06 | 0.579 | 1.27 | 0.030 | -1.35 | 0.134 | 0.40 | 0.14 |
| Solyc11g011880 | RLK, Receptor like protein | 30.2.17 | 72 | 0.027 | -0.08 | 2.39 | 0.035 | 1.93 | 0.004 | 1.24 | 0.399 | 0.73 | 0.002 |
| Solyc04g007470 | CONSTANS-like zinc finger protein | 27.3.7 | 14 | 0.027 | 0.054 | -2.29 | 0.020 | 1.09 | 0.742 | -2.49 | 0.002 | -0.13 | 0.644 |
| Solyc08g080270 | 3'-phosphoadenosine 5'-phosphosulfate transporter 1 | 34.11 | 30 | -0.03 | -0.04 | 1.59 | 0.123 | -1.27 | 0.143 | 2.01 | 0.038 | -0.12 | 0.67 |
| Solyc01g091320 | Sterol 4-alpha-methyl-oxidase 2 | 11.8.2 | 718 | -0.03 | 0.011 | -1.03 | 0.895 | -1.33 | 0.003 | 1.29 | 0.136 | -0.41 | 0.129 |
| Solyc01g091780 | Fructosamine kinase family protein | 35.2 | 53 | 0.027 | -0.02 | 1.17 | 0.123 | 1.54 | 0.001 | -1.31 | 0.146 | 0.71 | 0.003 |
| Solyc11g044960 | Histidyl-tRNA synthetase | 29.4 | 581 | 0.027 | 0.007 | -1.22 | 0.123 | 1.23 | 0.040 | -1.51 | 0.019 | 0.23 | 0.41 |
| Solyc03g044380 | Histone-lysine N-methyltransferase MEDEA | 27.3.99 | 542 | 0.027 | -0 | -1.06 | 0.928 | 1.33 | 0.004 | -1.40 | 0.117 | 0.38 | 0.162 |
| Solyc01g095930 | O-acyltransferase WSD1 | 35.2 | 69 | 0.026 | 0.046 | -2.10 | 0.089 | 1.30 | 0.424 | -2.72 | 0.008 | 0.17 | 0.545 |
| Solyc03g082610 | Arabidopsis thaliana genomic DNA chromosome 5 P1 clone MOK16 | 35.2 | 652 | -0.03 | -0.01 | 1.19 | 0.341 | -1.25 | 0.036 | 1.48 | 0.030 | -0.22 | 0.431 |

Supplementary Table S1. continued

| | | | | | | | | | | | | | |
|----------------|--|---------------|-----|-------|-------|-------|-------|-------|-------|-------|-------|-------|-------|
| Solyc09g010880 | Rhomboid family protein | 29.5.5 | 383 | -0.03 | -0.03 | 1.44 | 0.113 | -1.17 | 0.175 | 1.69 | 0.008 | -0.12 | 0.67 |
| Solyc02g083350 | DNA-directed RNA polymerase | 27.2 | 466 | 0.026 | 0.005 | -1.04 | 0.760 | 1.36 | 0.035 | -1.41 | 0.076 | 0.35 | 0.201 |
| Solyc10g074860 | Unknown Protein | 35.2 | 689 | -0.03 | -0.03 | 1.46 | 0.083 | -1.22 | 0.108 | 1.78 | 0.007 | -0.24 | 0.389 |
| Solyc09g055230 | ATP-dependent Clp protease ATP-binding subunit | 20.2.1 | 445 | 0.026 | 0.009 | -1.23 | 0.008 | 1.24 | 0.018 | -1.52 | 0.017 | 0.32 | 0.245 |
| Solyc09g075810 | Blue copper protein | 26.19 | 715 | -0.03 | -0.07 | 2.48 | 0.077 | -1.03 | 0.705 | 2.55 | 0.009 | -0.01 | 0.972 |
| Solyc04g071660 | Unknown Protein | 35.2 | 657 | 0.026 | 0.008 | -1.25 | 0.130 | 1.23 | 0.016 | -1.54 | 0.006 | 0.23 | 0.41 |
| Solyc04g016130 | F-box/LRR-repeat protein At5g63520 | 29.5.11.4.3.2 | 515 | 0.026 | 0.003 | -1.17 | 0.065 | 1.30 | 0.002 | -1.52 | 0.004 | 0.54 | 0.038 |
| Solyc07g005960 | Serine carboxypeptidase K10B2.2 | 29.5.5 | 609 | -0.03 | 0.017 | -1.02 | 0.829 | -1.48 | 0.019 | 1.45 | 0.146 | -0.53 | 0.042 |
| Solyc12g006970 | Unknown Protein | 35.2 | 138 | 0.026 | 0 | 1.00 | 0.928 | 1.35 | 0.028 | -1.35 | 0.052 | 0.50 | 0.058 |
| Solyc01g005790 | Pentatricopeptide repeat-containing protein | 27.3.25 | 322 | 0.026 | 0.009 | -1.26 | 0.004 | 1.25 | 0.015 | -1.57 | 0.014 | 0.35 | 0.201 |
| Solyc11g019910 | Pectinesterase | 26.18 | 543 | 0.026 | -0.01 | 1.14 | 0.396 | 1.44 | 0.007 | -1.27 | 0.178 | 0.57 | 0.027 |
| Solyc05g055730 | Methylenetetrahydrofolate reductase | 25 | 645 | 0.026 | -0.03 | 1.64 | 0.079 | 1.61 | 0.015 | 1.02 | 0.973 | 0.71 | 0.003 |
| Solyc06g073350 | Calcium-dependent protein kinase 2 | 29.4 | 60 | 0.026 | 0.015 | -1.45 | 0.057 | 1.21 | 0.193 | -1.76 | 0.036 | 0.15 | 0.594 |
| Solyc06g054670 | Stearoyl-acyl carrier protein desaturase | 11.1.15 | 15 | -0.03 | -0.01 | 1.19 | 0.391 | -1.31 | 0.056 | 1.55 | 0.042 | -0.42 | 0.119 |
| Solyc11g064760 | Disease resistance protein R3a-like protein | 35.2 | 312 | 0.026 | 0.017 | -1.21 | 0.213 | 1.22 | 0.083 | -1.47 | 0.026 | 0.33 | 0.23 |
| Solyc08g008360 | Unknown Protein | 35.2 | 606 | 0.026 | 0.014 | -1.31 | 0.093 | 1.21 | 0.065 | -1.59 | 0.042 | 0.12 | 0.67 |
| Solyc08g006080 | Exostosin | 26.2 | 348 | 0.026 | -0.01 | 1.07 | 0.604 | 1.41 | 0.005 | -1.32 | 0.097 | 0.75 | 0.001 |
| Solyc01g105150 | Potassium transporter family protein | 34.15 | 598 | 0.026 | -0 | -1.15 | 0.423 | 1.26 | 0.020 | -1.45 | 0.075 | 0.25 | 0.369 |
| Solyc01g059870 | Phytochrome B1 | 30.11 | 548 | -0.03 | -0.02 | 1.43 | 0.106 | -1.21 | 0.192 | 1.73 | 0.035 | -0.22 | 0.431 |
| Solyc02g092830 | Unknown Protein | 35.2 | 621 | 0.026 | -0 | -1.09 | 0.617 | 1.27 | 0.010 | -1.38 | 0.060 | 0.41 | 0.129 |
| Solyc08g007100 | HAD-superfamily hydrolase subfamily IA variant 3 | 35.2 | 209 | 0.025 | 0.013 | -1.39 | 0.023 | 1.19 | 0.130 | -1.65 | 0.030 | 0.22 | 0.431 |
| Solyc02g072000 | Heat stress transcription factor A3 | 27.3.23 | 218 | -0.03 | 0.005 | 1.00 | 0.982 | -1.39 | 0.003 | 1.40 | 0.024 | -0.54 | 0.038 |
| Solyc06g072770 | RNA recognition motif-containing protein | 27.4 | 397 | 0.025 | 0.036 | -1.84 | 0.155 | 1.26 | 0.112 | -2.32 | 0.034 | 0.21 | 0.453 |
| Solyc11g017240 | Chorismate mutase 2 | 13.1.6.2.1 | 585 | 0.025 | -0.02 | 1.13 | 0.368 | 1.41 | 0.004 | -1.25 | 0.135 | 0.54 | 0.038 |
| Solyc05g012770 | WRKY transcription factor-a | 27.3.32 | 389 | -0.03 | -0.02 | 1.62 | 0.001 | -1.19 | 0.301 | 1.94 | 0.030 | -0.13 | 0.644 |
| Solyc02g085670 | Major facilitator superfamily MFS_1 | 34.99 | 650 | 0.025 | 0 | -1.06 | 0.541 | 1.30 | 0.021 | -1.38 | 0.069 | 0.65 | 0.009 |
| Solyc10g050440 | Unknown Protein | 35.2 | 530 | -0.03 | -0.02 | 1.35 | 0.167 | -1.21 | 0.152 | 1.63 | 0.022 | -0.14 | 0.619 |
| Solyc06g050980 | Ferritin | 15.2 | 706 | -0.03 | -0.03 | 1.81 | 0.029 | -1.03 | 0.819 | 1.87 | 0.016 | 0.15 | 0.594 |
| Solyc03g112550 | Kinetochore protein Spc25 | 35.2 | 596 | 0.025 | 0.01 | -1.32 | 0.161 | 1.22 | 0.011 | -1.61 | 0.011 | 0.07 | 0.804 |
| Solyc07g066090 | SEC14 cytosolic factor family protein | 34.99 | 205 | -0.03 | 0.053 | -1.97 | 0.066 | -1.75 | 0.024 | -1.12 | 0.541 | -0.52 | 0.047 |
| Solyc01g099380 | U4/U6.U5 tri-snRNP-associated protein 1 | 33.99 | 316 | 0.025 | 0.025 | -1.44 | 0.016 | 1.15 | 0.198 | -1.65 | 0.016 | 0.16 | 0.569 |
| Solyc03g114010 | Pentatricopeptide repeat protein | 29.4 | 227 | 0.025 | 0.001 | -1.06 | 0.781 | 1.27 | 0.015 | -1.35 | 0.086 | 0.40 | 0.14 |
| Solyc12g096340 | UDP-sugar transporter-like protein | 34 | 180 | -0.03 | 0.024 | -1.29 | 0.356 | -1.59 | 0.020 | 1.24 | 0.372 | -0.61 | 0.016 |
| Solyc01g101100 | Receptor-like protein kinase | 29.4.1.57 | 403 | 0.025 | -0.02 | 1.14 | 0.539 | 1.46 | 0.005 | -1.28 | 0.144 | 0.51 | 0.052 |
| Solyc02g068900 | Glutathione transferase | 26.9 | 423 | -0.03 | 0.008 | -1.05 | 0.733 | -1.33 | 0.013 | 1.27 | 0.099 | -0.56 | 0.03 |
| Solyc02g090380 | Nbs-Irr, resistance protein | 20.1.7 | 358 | -0.03 | 0.001 | -1.00 | 0.996 | -1.40 | 0.016 | 1.39 | 0.150 | -0.46 | 0.084 |
| Solyc02g087150 | Heavy-metal-associated domain-containing protein | 35.2 | 504 | -0.03 | -0.01 | 1.49 | 0.055 | -1.20 | 0.242 | 1.78 | 0.028 | -0.32 | 0.245 |
| Solyc11g017440 | Snakin-2 | 17.6.3 | 304 | -0.03 | -0.09 | 2.52 | 0.046 | 1.02 | 0.886 | 2.46 | 0.042 | 0.11 | 0.696 |
| Solyc08g076060 | Serine/threonine kinase receptor | 30.2.17 | 277 | 0.025 | -0.12 | 3.56 | 0.012 | 2.52 | 0.001 | 1.41 | 0.297 | 0.86 | 0 |
| Solyc05g012650 | T7.1 protein | 35.2 | 421 | 0.025 | -0.01 | -1.02 | 0.960 | 1.29 | 0.005 | -1.31 | 0.099 | 0.58 | 0.023 |
| Solyc01g006890 | Genomic DNA chromosome 5 P1 clone MUK11 | 35.2 | 671 | -0.03 | 0.007 | -1.05 | 0.541 | -1.39 | 0.018 | 1.32 | 0.213 | -0.52 | 0.047 |

Supplementary Table S1. continued

| | | | | | | | | | | | | | |
|----------------|---|-------------|-----|-------|-------|-------|-------|-------|-------|-------|-------|-------|-------|
| Solyc05g050520 | NC domain-containing protein | 35.2 | 191 | 0.025 | 0.047 | -2.36 | 0.008 | 1.04 | 0.797 | -2.46 | 0.005 | -0.19 | 0.498 |
| Solyc10g044480 | Transmembrane 9 superfamily protein member 3 | 35.2 | 496 | 0.025 | -0.01 | 1.04 | 0.672 | 1.35 | 0.008 | -1.29 | 0.201 | 0.48 | 0.07 |
| Solyc03g114290 | UPF0497 membrane protein At2g36330 | 35.2 | 435 | 0.025 | -0.01 | 1.04 | 0.840 | 1.35 | 0.004 | -1.30 | 0.027 | 0.79 | 0 |
| Solyc07g049740 | Lipid-A-disaccharide synthase-like protein | 35.2 | 278 | 0.025 | 0.016 | -1.51 | 0.159 | 1.24 | 0.254 | -1.86 | 0.010 | 0.14 | 0.619 |
| Solyc03g098460 | Retinol dehydrogenase 12 | 33.99 | 729 | -0.03 | 0.007 | 1.11 | 0.522 | -1.30 | 0.023 | 1.45 | 0.046 | -0.23 | 0.41 |
| Solyc01g109650 | Receptor like kinase, RLK | 29.4.1.57 | 516 | 0.024 | 0.013 | -1.45 | 0.009 | 1.14 | 0.169 | -1.66 | 0.021 | 0.12 | 0.67 |
| Solyc02g069930 | Lipase-like protein | 11.9.2 | 194 | 0.024 | -0.03 | 1.51 | 0.038 | 1.63 | 0.000 | -1.08 | 0.486 | 0.90 | 0 |
| Solyc04g045580 | Os04g0386500 protein | 35.2 | 420 | 0.024 | 0.009 | -1.15 | 0.395 | 1.28 | 0.070 | -1.48 | 0.024 | 0.38 | 0.162 |
| Solyc10g047010 | Ulp1 protease family C-terminal catalytic domain containing protein | 35.2 | 5 | -0.02 | 0.015 | 1.01 | 0.932 | -1.44 | 0.004 | 1.46 | 0.005 | -0.68 | 0.005 |
| Solyc02g062500 | 2-oxoglutarate-dependent dioxygenase | 17.6.1 | 448 | -0.02 | 0.002 | -1.01 | 0.917 | -1.32 | 0.017 | 1.31 | 0.079 | -0.46 | 0.084 |
| Solyc06g082570 | Unknown Protein | 35.2 | 477 | -0.02 | 0.024 | -1.18 | 0.588 | -1.45 | 0.001 | 1.23 | 0.243 | -0.54 | 0.038 |
| Solyc12g057050 | Aquaporin | 34.19.2 | 49 | -0.02 | 0.008 | -1.12 | 0.417 | -1.45 | 0.018 | 1.29 | 0.279 | -0.56 | 0.03 |
| Solyc10g074470 | Bzip transcription factor-like | 27.3.35 | 588 | 0.024 | -0.02 | 1.13 | 0.246 | 1.36 | 0.005 | -1.21 | 0.262 | 0.66 | 0.007 |
| Solyc09g031650 | Zinc finger protein | 35.2 | 623 | 0.024 | 0.015 | -1.25 | 0.261 | 1.24 | 0.111 | -1.55 | 0.002 | 0.42 | 0.119 |
| Solyc08g075940 | DNA-directed RNA polymerase | 27.2 | 571 | -0.02 | 0.014 | 1.01 | 0.940 | -1.38 | 0.021 | 1.40 | 0.122 | -0.37 | 0.175 |
| Solyc05g009350 | Zinc finger CCCH domain-containing protein 65 | 27.3.99 | 538 | 0.024 | 0.014 | -1.26 | 0.097 | 1.17 | 0.125 | -1.48 | 0.025 | 0.19 | 0.498 |
| Solyc01g087850 | Subtilisin-like protease | 29.5.1 | 487 | 0.024 | -0.05 | 1.51 | 0.100 | 1.56 | 0.013 | -1.04 | 0.798 | 0.78 | 0.001 |
| Solyc06g083140 | Auxin-induced in root cultures protein 12 | 17.2.3 | 485 | 0.024 | -0.06 | 1.96 | 0.088 | 1.89 | 0.007 | 1.04 | 0.954 | 0.48 | 0.07 |
| Solyc09g005320 | E3 ubiquitin-protein ligase RNF34 | 29.5.11.4.2 | 398 | 0.024 | 0.005 | -1.17 | 0.148 | 1.25 | 0.038 | -1.46 | 0.049 | 0.48 | 0.07 |
| Solyc01g094940 | Receptor-like protein kinase | 29.4.1.57 | 607 | 0.024 | 0 | -1.21 | 0.476 | 1.27 | 0.008 | -1.54 | 0.065 | 0.15 | 0.594 |
| Solyc01g095510 | Mitochondrial carrier family | 34.9 | 666 | -0.02 | 0.084 | -2.38 | 0.088 | -1.74 | 0.013 | -1.37 | 0.315 | -0.43 | 0.11 |
| Solyc05g018510 | ABC transporter G family member 32 | 34.16 | 622 | 0.024 | -0.01 | -1.02 | 0.983 | 1.28 | 0.004 | -1.30 | 0.105 | 0.59 | 0.021 |
| Solyc04g009160 | Unknown Protein | 35.2 | 558 | 0.024 | 0.025 | -1.40 | 0.088 | 1.17 | 0.245 | -1.64 | 0.029 | 0.30 | 0.277 |
| Solyc02g094210 | Os02g0508100 protein | 35.2 | 294 | -0.02 | 0.001 | 1.01 | 1.000 | -1.32 | 0.022 | 1.33 | 0.142 | -0.49 | 0.064 |
| Solyc02g090000 | UPF0497 membrane protein At3g50810 | 35.2 | 267 | -0.02 | -0.02 | 1.31 | 0.086 | -1.22 | 0.084 | 1.60 | 0.016 | -0.24 | 0.389 |
| Solyc06g065490 | PsbP domain-containing protein 6, chloroplastic | 1.1.1.2 | 610 | 0.024 | -0.02 | 1.19 | 0.336 | 1.44 | 0.010 | -1.20 | 0.246 | 0.71 | 0.003 |
| Solyc11g007130 | Major facilitator superfamily MFS_1 | 35.2 | 635 | 0.024 | -0.01 | 1.05 | 0.686 | 1.31 | 0.012 | -1.25 | 0.181 | 0.57 | 0.027 |
| Solyc04g079560 | Lysine/histidine transporter | 34.3 | 424 | 0.024 | 0.017 | -1.36 | 0.038 | 1.18 | 0.060 | -1.60 | 0.001 | 0.16 | 0.569 |
| Solyc08g079050 | Unknown Protein | 35.2 | 147 | -0.02 | 0.008 | 1.01 | 0.867 | -1.33 | 0.031 | 1.35 | 0.188 | -0.47 | 0.077 |
| Solyc10g085140 | Undecaprenyl pyrophosphate synthase | 16.1.2 | 24 | -0.02 | -0.02 | 1.27 | 0.010 | -1.26 | 0.103 | 1.61 | 0.064 | -0.35 | 0.201 |
| Solyc09g065000 | Xylanase inhibitor | 29.5.4 | 269 | 0.024 | 0.016 | -1.37 | 0.035 | 1.22 | 0.035 | -1.67 | 0.003 | 0.25 | 0.369 |
| Solyc03g020020 | AT3G05680-like protein | 33.99 | 638 | 0.024 | 0.016 | -1.24 | 0.097 | 1.17 | 0.127 | -1.45 | 0.028 | 0.16 | 0.569 |
| Solyc12g010640 | Unknown Protein | 35.2 | 600 | -0.02 | -0 | 1.13 | 0.490 | -1.23 | 0.027 | 1.38 | 0.022 | -0.30 | 0.277 |
| Solyc06g008730 | 26S protease regulatory subunit 7 homolog A | 29.5.9 | 132 | -0.02 | 0.044 | -1.61 | 0.101 | -1.63 | 0.007 | 1.01 | 0.990 | -0.70 | 0.004 |
| Solyc09g005550 | Calcium dependent protein kinase 13 | 29.4 | 731 | -0.02 | 0.007 | -1.01 | 0.893 | -1.33 | 0.004 | 1.32 | 0.019 | -0.58 | 0.023 |
| Solyc01g081490 | RNA polymerase sigma factor | 27.2 | 338 | 0.023 | -0.02 | 1.28 | 0.217 | 1.39 | 0.015 | -1.09 | 0.571 | 0.81 | 0 |
| Solyc12g019700 | Unknown Protein | 35.2 | 703 | 0.023 | 0.011 | -1.32 | 0.031 | 1.16 | 0.149 | -1.53 | 0.055 | 0.20 | 0.475 |
| Solyc01g088440 | Ring H2 finger protein | 35.2 | 134 | -0.02 | -0.02 | 1.48 | 0.011 | -1.12 | 0.379 | 1.66 | 0.036 | -0.11 | 0.696 |
| Solyc09g010680 | Dof zinc finger protein | 27.3.8 | 454 | 0.023 | 0.014 | -1.32 | 0.003 | 1.18 | 0.069 | -1.56 | 0.020 | 0.24 | 0.389 |
| Solyc10g081630 | JmjC domain containing protein | 27.3.57 | 86 | 0.023 | -0.01 | 1.09 | 0.541 | 1.38 | 0.002 | -1.26 | 0.207 | 0.76 | 0.001 |
| Solyc04g079400 | Protein serine/threonine kinase | 29.4 | 584 | -0.02 | 0.029 | -1.20 | 0.339 | -1.48 | 0.006 | 1.23 | 0.152 | -0.58 | 0.023 |

Supplementary Table S1. continued

| | | | | | | | | | | | | | |
|----------------|---|-----------|-----|-------|-------|-------|-------|-------|-------|-------|-------|-------|-------|
| Solyc02g072140 | UNE1-like protein | 33.99 | 682 | 0.023 | 0.014 | -1.36 | 0.068 | 1.15 | 0.104 | -1.57 | 0.006 | 0.01 | 0.972 |
| Solyc06g065440 | Zinc finger family protein | 27.3.11 | 360 | 0.023 | -0.01 | -1.09 | 0.345 | 1.34 | 0.008 | -1.46 | 0.030 | 0.54 | 0.038 |
| Solyc01g009630 | Cleavage and polyadenylation specificity factor subunit 5 | 35.2 | 274 | 0.023 | 0.023 | -1.57 | 0.023 | 1.17 | 0.275 | -1.83 | 0.042 | 0.19 | 0.498 |
| Solyc03g032100 | Unknown Protein | 35.2 | 318 | 0.023 | 0.005 | -1.22 | 0.172 | 1.21 | 0.042 | -1.47 | 0.024 | 0.26 | 0.349 |
| Solyc04g005160 | 6-phosphogluconate dehydrogenase decarboxylating | 7.1.3 | 553 | -0.02 | -0.02 | 1.45 | 0.024 | -1.19 | 0.147 | 1.72 | 0.012 | -0.16 | 0.569 |
| Solyc10g006650 | Flavoprotein wrbA | 11.8 | 537 | -0.02 | -0.02 | 1.30 | 0.129 | -1.16 | 0.187 | 1.50 | 0.026 | -0.29 | 0.294 |
| Solyc12g096030 | Mitochondrial carrier-like protein | 34.9 | 514 | 0.023 | 0.005 | -1.20 | 0.075 | 1.22 | 0.017 | -1.46 | 0.014 | 0.27 | 0.33 |
| Solyc11g008970 | Pentatricopeptide repeat-containing protein | 27.3.25 | 99 | 0.023 | 0.016 | -1.25 | 0.089 | 1.17 | 0.116 | -1.46 | 0.038 | 0.14 | 0.619 |
| Solyc07g008780 | Unknown Protein | 35.2 | 162 | -0.02 | -0.01 | 1.31 | 0.128 | -1.22 | 0.074 | 1.59 | 0.011 | -0.49 | 0.064 |
| Solyc05g041780 | Unknown Protein | 35.2 | 77 | 0.023 | 0.062 | -2.71 | 0.053 | 1.08 | 0.763 | -2.94 | 0.024 | -0.01 | 0.972 |
| Solyc08g066790 | Phospholipase D | 11.9.3 | 484 | -0.02 | -0 | 1.22 | 0.036 | -1.31 | 0.002 | 1.59 | 0.003 | -0.48 | 0.07 |
| Solyc02g072260 | H2B histone-fold-like protein | 35.2 | 342 | -0.02 | -0.01 | 1.22 | 0.294 | -1.23 | 0.068 | 1.50 | 0.016 | -0.17 | 0.545 |
| Solyc04g015600 | Receptor like kinase, RLK | 30.2.11 | 88 | 0.023 | 0.027 | -1.55 | 0.047 | 1.12 | 0.359 | -1.73 | 0.005 | -0.02 | 0.944 |
| Solyc05g005190 | ADP-ribosylation factor | 29.3.4.99 | 733 | -0.02 | 0.003 | 1.07 | 0.466 | -1.26 | 0.029 | 1.36 | 0.099 | -0.51 | 0.052 |
| Solyc06g065340 | Unknown Protein | 35.2 | 551 | -0.02 | 0.015 | -1.14 | 0.442 | -1.34 | 0.004 | 1.17 | 0.294 | -0.58 | 0.023 |
| Solyc07g015980 | Lysine decarboxylase | 26.1.3 | 291 | 0.023 | 0.003 | -1.05 | 0.691 | 1.32 | 0.014 | -1.39 | 0.046 | 0.41 | 0.129 |
| Solyc03g095960 | Pentatricopeptide repeat-containing protein | 17.8.1 | 522 | 0.023 | 0.016 | -1.30 | 0.055 | 1.15 | 0.064 | -1.50 | 0.004 | 0.16 | 0.569 |
| Solyc12g055840 | Glucan endo-1 3-beta-glucosidase 7 | 26.4.1 | 734 | 0.023 | -0.01 | 1.02 | 0.810 | 1.30 | 0.006 | -1.28 | 0.104 | 0.60 | 0.018 |
| Solyc03g006410 | Plant-specific domain TIGR01615 family protein | 35.2 | 111 | 0.023 | -0.02 | 1.31 | 0.289 | 1.49 | 0.011 | -1.14 | 0.295 | 0.53 | 0.042 |
| Solyc01g100780 | Agenet domain-containing protein | 35.2 | 534 | 0.023 | 0.026 | -1.44 | 0.073 | 1.09 | 0.480 | -1.57 | 0.009 | 0.16 | 0.569 |
| Solyc03g080090 | NAC domain protein IPR003441 | 33.99 | 582 | -0.02 | -0.04 | 1.80 | 0.031 | -1.05 | 0.602 | 1.90 | 0.003 | -0.05 | 0.86 |
| Solyc07g043510 | Cysteine-type peptidase | 29.5.3 | 379 | -0.02 | -0.01 | 1.13 | 0.301 | -1.29 | 0.031 | 1.46 | 0.053 | -0.49 | 0.064 |
| Solyc09g056260 | tRNA pseudouridine synthase family protein | 29.1 | 336 | 0.023 | 0.02 | -1.37 | 0.074 | 1.14 | 0.227 | -1.56 | 0.006 | -0.04 | 0.887 |
| Solyc06g071900 | Pentatricopeptide repeat-containing protein | 27.3.67 | 302 | 0.023 | 0.013 | -1.40 | 0.079 | 1.18 | 0.102 | -1.65 | 0.000 | 0.14 | 0.619 |
| Solyc04g071680 | Receptor like kinase, RLK | 30.2.11 | 32 | -0.02 | 0.036 | -1.45 | 0.111 | -1.63 | 0.011 | 1.12 | 0.717 | -0.42 | 0.119 |
| Solyc03g096180 | Unknown Protein | 35.2 | 707 | 0.022 | -0 | -1.02 | 0.798 | 1.30 | 0.012 | -1.33 | 0.059 | 0.73 | 0.002 |
| Solyc02g062970 | Xaa-Pro aminopeptidase 2 | 29.5 | 633 | -0.02 | -0.01 | 1.32 | 0.124 | -1.14 | 0.069 | 1.51 | 0.014 | -0.15 | 0.594 |
| Solyc06g062460 | BHLH transcription factor-like | 27.3.6 | 253 | 0.022 | 0.035 | -1.70 | 0.028 | 1.10 | 0.458 | -1.86 | 0.043 | 0.03 | 0.915 |
| Solyc01g098700 | Branched-chain amino acid aminotransferase-like protein | 26.26.1 | 695 | 0.022 | 0 | -1.12 | 0.373 | 1.24 | 0.042 | -1.39 | 0.070 | 0.49 | 0.064 |
| Solyc02g085050 | Inorganic pyrophosphatase-like protein | 23.4.99 | 637 | -0.02 | -0.01 | 1.25 | 0.139 | -1.21 | 0.062 | 1.51 | 0.011 | -0.27 | 0.33 |
| Solyc01g110310 | GATA transcription factor 9 | 27.3.9 | 459 | 0.022 | -0.01 | 1.06 | 0.632 | 1.33 | 0.005 | -1.25 | 0.124 | 0.58 | 0.023 |
| Solyc02g084550 | Chromosome 10 contig 1 DNA sequence | 35.2 | 112 | -0.02 | 0.014 | -1.01 | 0.917 | -1.39 | 0.010 | 1.38 | 0.094 | -0.63 | 0.012 |
| Solyc02g070260 | Protein phosphatase 1 regulatory subunit 7 | 35.2 | 592 | 0.022 | 0.007 | -1.13 | 0.386 | 1.25 | 0.039 | -1.41 | 0.031 | 0.57 | 0.027 |
| Solyc04g074870 | Purine permease family protein | 34.10 | 521 | 0.022 | -0.01 | -1.18 | 0.410 | 1.30 | 0.015 | -1.53 | 0.052 | 0.29 | 0.294 |
| Solyc02g093310 | MAP-like protein kinase | 30.6 | 738 | -0.02 | 0.007 | 1.10 | 0.502 | -1.35 | 0.004 | 1.48 | 0.008 | -0.43 | 0.11 |
| Solyc02g088820 | Serine carboxypeptidase K10B2.2 | 29.5.5 | 18 | 0.022 | -0.07 | 2.08 | 0.030 | 1.86 | 0.006 | 1.12 | 0.754 | 0.53 | 0.042 |
| Solyc10g055350 | Unknown Protein | 35.2 | 747 | 0.022 | 0.013 | -1.21 | 0.234 | 1.16 | 0.102 | -1.41 | 0.016 | 0.28 | 0.312 |
| Solyc02g063020 | Major facilitator superfamily MFS_1 | 34.99 | 282 | -0.02 | 0.011 | 1.02 | 0.740 | -1.36 | 0.010 | 1.39 | 0.114 | -0.52 | 0.047 |
| Solyc09g082460 | Homocysteine s-methyltransferase | 13.1.3.4 | 62 | 0.022 | -0 | -1.23 | 0.275 | 1.40 | 0.013 | -1.72 | 0.028 | 0.34 | 0.215 |

Supplementary Table S1. continued

| | | | | | | | | | | | | | |
|----------------|--|-------------|-----|-------|-------|--------|-------|-------|-------|-------|-------|-------|-------|
| Solyc12g008520 | Calmodulin-binding family protein | 30.3 | 380 | 0.022 | 0.003 | -1.17 | 0.349 | 1.29 | 0.021 | -1.51 | 0.015 | 0.18 | 0.521 |
| Solyc08g079750 | 1-aminocyclopropane-1-carboxylate synthase | 17.5.1.1 | 367 | 0.022 | 0.016 | -1.32 | 0.043 | 1.20 | 0.024 | -1.59 | 0.001 | 0.30 | 0.277 |
| Solyc09g007750 | Receptor-like kinase | 29.4.1.57 | 533 | -0.02 | -0.02 | 1.60 | 0.089 | -1.16 | 0.287 | 1.85 | 0.011 | 0.06 | 0.832 |
| Solyc09g089580 | 1-aminocyclopropane-1-carboxylate oxidase-like protein | 17.5.1 | 524 | 0.022 | 0.008 | -1.26 | 0.145 | 1.20 | 0.045 | -1.52 | 0.065 | 0.17 | 0.545 |
| Solyc10g078700 | Squamosa promoter-binding protein | 27.3.28 | 743 | 0.022 | -0.01 | -1.01 | 0.914 | 1.34 | 0.011 | -1.36 | 0.019 | 0.23 | 0.41 |
| Solyc03g083120 | Unknown Protein | 35.2 | 321 | 0.022 | 0.073 | -2.65 | 0.012 | -1.16 | 0.496 | -2.29 | 0.014 | -0.18 | 0.521 |
| Solyc12g014020 | SOSS complex subunit B1 | 35.2 | 325 | 0.021 | 0.022 | -1.46 | 0.041 | 1.06 | 0.615 | -1.54 | 0.015 | -0.07 | 0.804 |
| Solyc09g063030 | CLIP-associating protein 1-like | 35.2 | 681 | 0.021 | 0.015 | -1.27 | 0.136 | 1.14 | 0.168 | -1.45 | 0.009 | 0.23 | 0.41 |
| Solyc09g083330 | Phosphatidate cytidyltransferase | 11.3 | 255 | -0.02 | 0.038 | -1.44 | 0.151 | -1.56 | 0.021 | 1.08 | 0.827 | -0.60 | 0.018 |
| Solyc07g049300 | Endoglucanase 1 | 10.6.1 | 556 | -0.02 | 0.001 | 1.10 | 0.485 | -1.24 | 0.017 | 1.37 | 0.037 | -0.35 | 0.201 |
| Solyc01g106800 | Amino acid permease 6 | 34.3 | 580 | -0.02 | -0.04 | 1.64 | 0.049 | -1.00 | 0.938 | 1.65 | 0.015 | 0.07 | 0.804 |
| Solyc12g049510 | Erect panical 2 | 33.99 | 456 | -0.02 | -0.03 | 1.74 | 0.012 | -1.07 | 0.412 | 1.86 | 0.002 | -0.15 | 0.594 |
| Solyc12g099650 | Photosystem II 5 kDa protein, chloroplastic | 35.2 | 670 | -0.02 | -0.03 | 1.52 | 0.083 | -1.04 | 0.663 | 1.58 | 0.008 | 0.04 | 0.887 |
| Solyc01g108580 | Gibberellin receptor GID1L2 | 24 | 680 | -0.02 | -0.01 | 1.19 | 0.307 | -1.15 | 0.096 | 1.38 | 0.014 | -0.27 | 0.33 |
| Solyc05g053880 | cDNA FL42396 fis clone ASTRO2001107 | 35.2 | 107 | 0.021 | 0.03 | -1.63 | 0.049 | 1.03 | 0.808 | -1.69 | 0.025 | -0.18 | 0.521 |
| Solyc00g144470 | Serine/threonine-protein phosphatase 7 long form homolog | 29.4 | 432 | 0.021 | 0.053 | -1.98 | 0.042 | 1.02 | 0.967 | -2.02 | 0.019 | -0.13 | 0.644 |
| Solyc04g077750 | Unknown Protein | 35.2 | 505 | 0.021 | -0.07 | 2.29 | 0.001 | 1.60 | 0.035 | 1.43 | 0.680 | 0.64 | 0.01 |
| Solyc09g090620 | CC-NBS-LRR class disease resistance protein | 35.2 | 174 | 0.021 | -0.03 | 1.44 | 0.175 | 1.69 | 0.006 | -1.18 | 0.516 | 0.70 | 0.004 |
| Solyc03g059190 | (+)-neomenthol dehydrogenase | 26.22 | 181 | 0.021 | -0.04 | 1.78 | 0.063 | 1.72 | 0.004 | 1.03 | 0.902 | 0.79 | 0 |
| Solyc11g012470 | Heterogeneous nuclear ribonucleoprotein A3 | 27.4 | 597 | 0.021 | -0.01 | -1.01 | 0.941 | 1.26 | 0.022 | -1.27 | 0.144 | 0.55 | 0.034 |
| Solyc03g025560 | Undecaprenyl pyrophosphate synthase | 16.1.5 | 481 | 0.021 | 0.014 | -1.29 | 0.056 | 1.12 | 0.196 | -1.44 | 0.025 | 0.30 | 0.277 |
| Solyc04g077290 | YEATS domain-containing protein | 27.3.51 | 617 | 0.021 | 0.005 | -1.11 | 0.390 | 1.19 | 0.027 | -1.32 | 0.066 | 0.39 | 0.151 |
| Solyc10g086470 | Chromosome 05 contig 1 DNA sequence | 35.2 | 244 | -0.02 | 0.024 | -1.43 | 0.241 | -1.59 | 0.013 | 1.11 | 0.633 | -0.51 | 0.052 |
| Solyc05g013530 | Octicosapeptide/Phox/Bem1p domain-containing protein | 29.4 | 509 | 0.021 | -0.03 | 1.29 | 0.113 | 1.54 | 0.000 | -1.19 | 0.100 | 0.69 | 0.004 |
| Solyc05g021370 | Unknown Protein | 35.2 | 146 | 0.021 | -0.1 | 3.47 | 0.150 | 2.85 | 0.027 | 1.22 | 0.460 | 0.27 | 0.33 |
| Solyc01g017860 | Unknown Protein | 35.2 | 170 | 0.02 | 0.01 | -1.49 | 0.024 | 1.21 | 0.073 | -1.80 | 0.008 | 0.13 | 0.644 |
| Solyc10g007950 | Alpha alpha-trehalose-phosphate synthase | 3.2.1 | 479 | 0.02 | 0.009 | -1.30 | 0.045 | 1.15 | 0.167 | -1.49 | 0.040 | 0.11 | 0.696 |
| Solyc03g112420 | Pentatricopeptide repeat-containing protein | 29.4 | 281 | 0.02 | -0 | 1.01 | 0.948 | 1.29 | 0.010 | -1.28 | 0.095 | 0.43 | 0.11 |
| Solyc01g104950 | Alpha-L-arabinofuranosidase/beta-D-xylosidase | 10.6.2 | 748 | 0.02 | -0.02 | 1.13 | 0.242 | 1.35 | 0.004 | -1.19 | 0.263 | 0.56 | 0.03 |
| Solyc00g036740 | Unknown Protein | 35.2 | 85 | -0.02 | -0.02 | 1.36 | 0.106 | -1.19 | 0.186 | 1.61 | 0.031 | -0.08 | 0.777 |
| Solyc02g093350 | Homology to unknown gene | 35.2 | 415 | -0.02 | 0.01 | 1.03 | 0.913 | -1.28 | 0.009 | 1.32 | 0.015 | -0.35 | 0.201 |
| Solyc02g083590 | Dehydroquinase synthase | 13.1.6.1.2 | 688 | -0.02 | -0.01 | 1.36 | 0.104 | -1.11 | 0.253 | 1.50 | 0.013 | 0.02 | 0.944 |
| Solyc12g056800 | Oxidoreductase family protein | 35.2 | 726 | -0.02 | 0.011 | -1.02 | 0.996 | -1.28 | 0.006 | 1.25 | 0.109 | -0.37 | 0.175 |
| Solyc09g061320 | Solute carrier family 35 member F4 | 35.2 | 692 | -0.02 | -0 | 1.10 | 0.452 | -1.31 | 0.021 | 1.44 | 0.054 | -0.38 | 0.162 |
| Solyc05g045670 | Glucose-6-phosphate/phosphate translocator 2 | 34.8 | 343 | 0.02 | 0.159 | -14.65 | 0.024 | -2.08 | 0.363 | -7.05 | 0.095 | -0.14 | 0.619 |
| Solyc01g088170 | Aldehyde oxidase | 17.1.1 | 696 | 0.02 | -0.01 | 1.20 | 0.412 | 1.36 | 0.015 | -1.14 | 0.165 | 0.77 | 0.001 |
| Solyc11g008620 | Phosphoglycolate phosphatase | 1.2.1 | 651 | -0.02 | -0.02 | 1.37 | 0.081 | -1.12 | 0.281 | 1.54 | 0.019 | -0.19 | 0.498 |
| Solyc06g065230 | N-acetyltransferase 5 | 27.3.70 | 387 | 0.02 | 0.004 | -1.13 | 0.301 | 1.24 | 0.037 | -1.40 | 0.056 | 0.32 | 0.245 |
| Solyc00g136260 | Ring H2 finger protein | 29.5.11.4.2 | 714 | 0.02 | -0.02 | 1.22 | 0.309 | 1.44 | 0.007 | -1.18 | 0.231 | 0.87 | 0 |

Supplementary Table S1. continued

| | | | | | | | | | | | | | |
|----------------|---|-----------------|-----|-------|-------|-------|-------|-------|-------|-------|-------|-------|-------|
| Solyc11g008680 | Fatty acid desaturase, type 2 | 11.1.15 | 185 | -0.02 | -0.03 | 1.48 | 0.080 | -1.15 | 0.248 | 1.71 | 0.014 | -0.24 | 0.389 |
| Solyc09g055700 | Myosin-like protein | 35.2 | 517 | 0.02 | 0.012 | -1.37 | 0.013 | 1.13 | 0.062 | -1.55 | 0.013 | 0.10 | 0.723 |
| Solyc05g015730 | MADS-box transcription factor 1 | 27.3.24 | 353 | 0.02 | 0.022 | -1.35 | 0.116 | 1.11 | 0.370 | -1.50 | 0.003 | 0.30 | 0.277 |
| Solyc00g133710 | Unknown Protein | 35.2 | 265 | -0.02 | -0.03 | 1.76 | 0.001 | -1.05 | 0.770 | 1.84 | 0.008 | -0.06 | 0.832 |
| Solyc06g033930 | Polyprotein | 35.2 | 37 | -0.02 | 0.061 | -1.85 | 0.110 | -1.71 | 0.029 | -1.08 | 0.674 | -0.47 | 0.077 |
| Solyc01g091540 | Growth-regulating factor 12 | 27.3.50 | 450 | -0.02 | 0.027 | -1.29 | 0.281 | -1.46 | 0.022 | 1.13 | 0.518 | -0.66 | 0.007 |
| Solyc07g025400 | Unknown Protein | 35.2 | 444 | 0.02 | -0.01 | 1.18 | 0.310 | 1.36 | 0.016 | -1.15 | 0.349 | 0.77 | 0.001 |
| Solyc08g081900 | Translation initiation factor IF-2 | 29.2.3 | 519 | 0.019 | 0.024 | -1.44 | 0.010 | 1.07 | 0.384 | -1.54 | 0.015 | -0.02 | 0.944 |
| Solyc03g031430 | Urease accessory protein UreF | 12.4 | 263 | -0.02 | 0.02 | -1.29 | 0.206 | -1.45 | 0.018 | 1.12 | 0.596 | -0.45 | 0.092 |
| Solyc03g114020 | Genomic DNA chromosome 5 P1 clone MQB2 | 35.2 | 653 | 0.019 | -0.01 | -1.02 | 0.800 | 1.27 | 0.013 | -1.30 | 0.037 | 0.57 | 0.027 |
| Solyc09g074360 | RNA binding protein | 27.4 | 603 | 0.019 | 0.013 | -1.31 | 0.074 | 1.12 | 0.072 | -1.46 | 0.013 | 0.09 | 0.75 |
| Solyc11g020720 | MRNA clone RAFL21-57-I05 | 35.2 | 235 | 0.019 | -0.01 | -1.04 | 0.697 | 1.32 | 0.012 | -1.37 | 0.024 | 0.61 | 0.016 |
| Solyc06g071920 | Glyceraldehyde-3-phosphate dehydrogenase | 4.1.8 | 698 | -0.02 | -0.01 | 1.12 | 0.474 | -1.25 | 0.029 | 1.41 | 0.054 | -0.41 | 0.129 |
| Solyc04g078290 | Cytochrome P450 | 26.10 | 159 | -0.02 | -0.02 | 1.39 | 0.040 | -1.15 | 0.071 | 1.60 | 0.008 | -0.23 | 0.41 |
| Solyc08g015730 | F-box family protein | 29.5.11.4.3.2 | 35 | 0.019 | 0.048 | -2.62 | 0.018 | 1.03 | 0.666 | -2.70 | 0.032 | -0.08 | 0.777 |
| Solyc08g005540 | Amino acid permease-like protein | 34.3 | 319 | 0.019 | 0.021 | -1.46 | 0.033 | 1.11 | 0.305 | -1.63 | 0.007 | 0.06 | 0.832 |
| Solyc01g010650 | UDP-galactose transporter 3 | 34.11 | 540 | -0.02 | 0.001 | 1.14 | 0.267 | -1.18 | 0.025 | 1.34 | 0.061 | -0.25 | 0.369 |
| Solyc03g051810 | Homogentisate phytyltransferase | 16.1.3 | 557 | 0.018 | -0.02 | 1.16 | 0.311 | 1.38 | 0.001 | -1.19 | 0.103 | 0.52 | 0.047 |
| Solyc00g041210 | Tetratricopeptide TPR_2 repeat protein | 35.2 | 135 | -0.02 | -0.02 | 1.51 | 0.007 | -1.07 | 0.619 | 1.62 | 0.030 | -0.06 | 0.832 |
| Solyc04g080720 | Transferase family protein | 16.2 | 326 | 0.018 | 0.079 | -2.62 | 0.026 | -1.12 | 0.567 | -2.35 | 0.012 | -0.28 | 0.312 |
| Solyc07g018180 | Receptor like kinase, RLK | 30.2.11 | 121 | 0.018 | 0.047 | -2.09 | 0.033 | -1.04 | 0.669 | -2.01 | 0.005 | -0.29 | 0.294 |
| Solyc02g092810 | RNA-binding protein MEX3C | 35.2 | 74 | -0.02 | 0.017 | -1.07 | 0.708 | -1.30 | 0.009 | 1.21 | 0.174 | -0.64 | 0.01 |
| Solyc01g080010 | Xylanase inhibitor | 29.5.4 | 129 | 0.018 | -0.06 | 2.31 | 0.004 | 1.62 | 0.008 | 1.43 | 0.182 | 0.45 | 0.092 |
| Solyc11g006540 | FAD-dependent pyridine nucleotide-disulphide oxidoreductase | 35.2 | 175 | -0.02 | 0.005 | 1.06 | 0.769 | -1.25 | 0.033 | 1.33 | 0.042 | -0.61 | 0.016 |
| Solyc12g056350 | Unknown Protein | 35.2 | 446 | 0.018 | 0.03 | -1.68 | 0.027 | 1.04 | 0.799 | -1.74 | 0.013 | -0.01 | 0.972 |
| Solyc00g007060 | Serine/threonine kinase-like protein ABC1063 | 29.4.1.57 | 392 | -0.02 | -0 | 1.11 | 0.483 | -1.21 | 0.048 | 1.34 | 0.030 | -0.51 | 0.052 |
| Solyc07g065860 | Receptor like kinase, RLK | 30.2.11 | 268 | 0.018 | -0.05 | 1.79 | 0.065 | 1.66 | 0.011 | 1.08 | 0.819 | 0.71 | 0.003 |
| Solyc02g080900 | Genomic DNA chromosome 5 TAC clone K6A12 | 35.2 | 589 | -0.02 | -0.02 | 1.46 | 0.041 | -1.17 | 0.116 | 1.70 | 0.007 | -0.06 | 0.832 |
| Solyc02g068090 | 30S ribosomal protein S21, chloroplastic | 29.2.1.1.3.1.21 | 376 | 0.018 | -0.03 | 1.25 | 0.110 | 1.45 | 0.002 | -1.16 | 0.280 | 0.75 | 0.001 |
| Solyc01g081640 | Legume lectin beta domain | 35.2 | 402 | 0.018 | 0.013 | -1.28 | 0.103 | 1.20 | 0.081 | -1.54 | 0.014 | 0.36 | 0.187 |
| Solyc06g050340 | Unknown Protein | 35.2 | 315 | 0.018 | 0.136 | -6.22 | 0.004 | -2.39 | 0.084 | -2.61 | 0.089 | -0.30 | 0.277 |
| Solyc01g110550 | Ribosome-binding factor A | 27.1 | 352 | 0.018 | 0.012 | -1.28 | 0.024 | 1.14 | 0.151 | -1.47 | 0.033 | 0.25 | 0.369 |
| Solyc07g025250 | Pentatricopeptide repeat-containing protein | 17.8.1 | 354 | 0.018 | 0.016 | -1.36 | 0.023 | 1.08 | 0.247 | -1.46 | 0.016 | 0.05 | 0.86 |
| Solyc08g078950 | Nitrate transporter | 34.13 | 276 | 0.018 | -0 | -1.05 | 0.660 | 1.26 | 0.026 | -1.33 | 0.046 | 0.31 | 0.261 |
| Solyc03g120850 | chaperonin | 29.6 | 709 | 0.018 | -0.03 | 1.38 | 0.115 | 1.33 | 0.008 | 1.04 | 0.662 | 0.44 | 0.101 |
| Solyc05g042040 | UBX domain-containing protein | 29.5 | 410 | 0.017 | 0.004 | -1.16 | 0.146 | 1.18 | 0.046 | -1.37 | 0.052 | 0.22 | 0.431 |
| Solyc06g007250 | Leucine-rich repeat family protein | 20.1 | 636 | 0.017 | 0.006 | -1.17 | 0.090 | 1.19 | 0.047 | -1.39 | 0.039 | 0.39 | 0.151 |
| Solyc07g043160 | UDP-glucosyltransferase | 26.2 | 259 | 0.017 | -0.02 | 1.26 | 0.090 | 1.34 | 0.012 | -1.07 | 0.644 | 0.63 | 0.012 |
| Solyc01g006690 | Unknown Protein | 35.2 | 306 | 0.017 | 0.002 | -1.12 | 0.471 | 1.27 | 0.016 | -1.43 | 0.096 | 0.40 | 0.14 |
| Solyc01g108300 | Myb family transcription factor | 27.3.20 | 539 | 0.017 | -0.06 | 1.92 | 0.015 | 1.59 | 0.000 | 1.21 | 0.287 | 0.77 | 0.001 |
| Solyc03g120190 | Plant-specific domain TIGR01568 family protein | 35.2 | 23 | -0.02 | -0.01 | 1.33 | 0.127 | -1.09 | 0.272 | 1.45 | 0.009 | -0.10 | 0.723 |

Supplementary Table S1. continued

| | | | | | | | | | | | | | |
|----------------|--|---------------|-----|-------|-------|--------|-------|-------|-------|-------|-------|-------|-------|
| Solyc11g021360 | Unknown Protein | 35.2 | 737 | 0.017 | 0.035 | -1.66 | 0.043 | 1.05 | 0.811 | -1.74 | 0.010 | 0.15 | 0.594 |
| Solyc05g054680 | Pto-like, Serine/threonine kinase protein, resistance protein | 29.4.1.57 | 223 | 0.017 | 0.01 | -1.28 | 0.065 | 1.11 | 0.232 | -1.43 | 0.016 | 0.26 | 0.349 |
| Solyc02g062950 | G-box binding factor | 27.3.35 | 668 | 0.017 | 0.007 | -1.17 | 0.283 | 1.20 | 0.074 | -1.40 | 0.011 | 0.39 | 0.151 |
| Solyc02g088430 | ATP-dependent DNA helicase RecQ | 28.99 | 110 | 0.017 | 0.037 | -1.95 | 0.010 | 1.00 | 0.991 | -1.95 | 0.008 | -0.26 | 0.349 |
| Solyc02g089060 | Hydrolase alpha/beta fold family protein | 26.8 | 208 | -0.02 | 0.05 | -1.69 | 0.165 | -1.47 | 0.008 | -1.15 | 0.772 | -0.51 | 0.052 |
| Solyc01g107170 | Zinc finger protein | 27.3.11 | 196 | -0.02 | -0.02 | 1.28 | 0.010 | -1.14 | 0.201 | 1.46 | 0.049 | -0.18 | 0.521 |
| Solyc12g098850 | Soluble diacylglycerol acyltransferase | 35.2 | 341 | 0.017 | 0.07 | -3.16 | 0.019 | -1.10 | 0.824 | -2.88 | 0.033 | -0.23 | 0.41 |
| Solyc10g008450 | F-box family protein | 29.5.11.4.3.2 | 279 | 0.017 | 0.012 | -1.26 | 0.038 | 1.08 | 0.318 | -1.36 | 0.038 | 0.08 | 0.777 |
| Solyc06g009290 | Lipid A export ATP-binding/permease protein msbA | 34.16 | 57 | -0.02 | -0.06 | 2.78 | 0.023 | 1.22 | 0.456 | 2.28 | 0.003 | 0.26 | 0.349 |
| Solyc11g012540 | F-box family protein | 29.5.11.4.3.2 | 213 | 0.017 | 0.038 | -1.65 | 0.022 | -1.02 | 0.917 | -1.62 | 0.032 | -0.08 | 0.777 |
| Solyc01g079310 | Unknown Protein | 35.2 | 395 | -0.02 | -0.02 | 1.43 | 0.039 | -1.16 | 0.100 | 1.66 | 0.002 | -0.23 | 0.41 |
| Solyc02g083520 | BZIP transcription factor | 35.2 | 6 | 0.017 | -0 | -1.05 | 0.767 | 1.29 | 0.009 | -1.36 | 0.087 | 0.53 | 0.042 |
| Solyc12g049320 | GRAS family transcription factor | 27.3.21 | 271 | -0.02 | 0.077 | -2.01 | 0.030 | -1.86 | 0.034 | -1.08 | 0.676 | -0.50 | 0.058 |
| Solyc11g066620 | Aspartyl protease family protein | 29.5.4 | 629 | -0.02 | 0.026 | -1.29 | 0.042 | -1.36 | 0.012 | 1.06 | 0.814 | -0.55 | 0.034 |
| Solyc05g051970 | cDNA clone J033025P19 full insert sequence | 35.2 | 240 | -0.02 | 0.035 | -1.47 | 0.037 | -1.46 | 0.018 | -1.01 | 0.909 | -0.60 | 0.018 |
| Solyc11g064950 | BZIP transcription factor | 27.3.35 | 433 | -0.02 | 0.033 | -1.44 | 0.082 | -1.48 | 0.009 | 1.03 | 0.890 | -0.60 | 0.018 |
| Solyc02g068990 | Unknown Protein | 35.2 | 283 | 0.016 | 0.01 | -1.26 | 0.013 | 1.17 | 0.030 | -1.48 | 0.017 | 0.18 | 0.521 |
| Solyc07g008030 | Glycosyl transferase family 17 protein | 26.8 | 404 | -0.02 | 0.018 | -1.22 | 0.098 | -1.31 | 0.011 | 1.08 | 0.656 | -0.55 | 0.034 |
| Solyc12g077660 | Set protein | 35.2 | 486 | 0.016 | -0.09 | 4.61 | 0.005 | 1.74 | 0.087 | 2.65 | 0.202 | 0.66 | 0.007 |
| Solyc09g007850 | RNA-binding protein | 27.4 | 742 | 0.016 | -0.02 | 1.25 | 0.150 | 1.31 | 0.009 | -1.05 | 0.666 | 0.66 | 0.007 |
| Solyc00g055950 | Response regulator receiver Transcriptional regulatory protein | 35.2 | 66 | -0.02 | 0.03 | -1.59 | 0.028 | -1.36 | 0.056 | -1.17 | 0.395 | -0.49 | 0.064 |
| Solyc01g022740 | Kelch-like protein 21 | 29.5.11.4.3.2 | 251 | 0.016 | 0.019 | -1.40 | 0.055 | 1.07 | 0.513 | -1.49 | 0.031 | -0.17 | 0.545 |
| Solyc08g007300 | Cyclin-D-binding Myb-like transcription factor 1 | 27.3.25 | 228 | 0.016 | 0.023 | -1.47 | 0.013 | 1.01 | 0.851 | -1.49 | 0.024 | -0.22 | 0.431 |
| Solyc05g005180 | Naphthoate synthase | 18.5.2.5 | 520 | 0.016 | -0.05 | 1.70 | 0.040 | 1.50 | 0.001 | 1.13 | 0.350 | 0.74 | 0.002 |
| Solyc06g050330 | Unknown Protein | 35.2 | 500 | -0.02 | 0.213 | -11.51 | 0.007 | -4.24 | 0.015 | -2.72 | 0.072 | -0.36 | 0.187 |
| Solyc04g007700 | Unknown Protein | 35.2 | 570 | -0.02 | 0.014 | -1.09 | 0.318 | -1.27 | 0.004 | 1.16 | 0.154 | -0.68 | 0.005 |
| Solyc10g074980 | Vacuolar sorting receptor | 29.3.4.3 | 711 | -0.02 | -0.02 | 1.40 | 0.049 | -1.07 | 0.434 | 1.50 | 0.012 | 0.06 | 0.832 |
| Solyc02g078590 | Alpha-1 4-galactosyltransferase | 26.2 | 464 | 0.016 | -0.03 | 1.23 | 0.079 | 1.32 | 0.010 | -1.08 | 0.554 | 0.54 | 0.038 |
| Solyc02g091910 | EPIDERMAL PATTERNING FACTOR-like protein 2 | 35.2 | 41 | 0.016 | 0.047 | -2.16 | 0.001 | -1.15 | 0.230 | -1.88 | 0.004 | -0.22 | 0.431 |
| Solyc02g093790 | CXE carboxylesterase | 24 | 327 | 0.016 | -0.01 | 1.11 | 0.276 | 1.31 | 0.009 | -1.18 | 0.253 | 0.60 | 0.018 |
| Solyc00g034000 | Permease of the major facilitator superfamily | 35.2 | 183 | -0.02 | 0.046 | -1.65 | 0.050 | -1.50 | 0.015 | -1.10 | 0.603 | -0.49 | 0.064 |
| Solyc07g024000 | Dehydrogenase/ reductase 3 | 26.22 | 467 | 0.015 | 0.034 | -1.57 | 0.039 | 1.05 | 0.698 | -1.65 | 0.017 | -0.09 | 0.75 |
| Solyc02g064600 | Unknown Protein | 35.2 | 357 | 0.015 | 0.016 | -1.29 | 0.016 | 1.09 | 0.267 | -1.40 | 0.044 | 0.21 | 0.453 |
| Solyc01g109930 | Inositol monophosphatase family protein | 3.4.5 | 465 | -0.02 | -0.02 | 1.44 | 0.031 | -1.08 | 0.345 | 1.56 | 0.009 | 0.03 | 0.915 |
| Solyc03g006590 | Unknown Protein | 35.2 | 647 | -0.02 | 0.027 | -1.35 | 0.118 | -1.42 | 0.011 | 1.05 | 0.802 | -0.71 | 0.003 |
| Solyc05g053960 | Amino acid transporter | 35.2 | 124 | -0.02 | 0.104 | -3.74 | 0.009 | -2.35 | 0.043 | -1.59 | 0.290 | -0.45 | 0.092 |
| Solyc06g076790 | Unknown Protein | 35.2 | 573 | -0.02 | -0.04 | 1.75 | 0.040 | 1.06 | 0.737 | 1.65 | 0.024 | 0.29 | 0.294 |
| Solyc03g005060 | Os12g0236050 protein | 28.1 | 478 | -0.02 | 0.018 | -1.18 | 0.152 | -1.29 | 0.020 | 1.10 | 0.582 | -0.69 | 0.004 |
| Solyc11g012410 | Inositol monophosphatase 3 | 3.4.5 | 528 | -0.02 | -0.02 | 1.46 | 0.041 | -1.06 | 0.578 | 1.55 | 0.023 | -0.18 | 0.521 |

Supplementary Table S1. continued

| | | | | | | | | | | | | | |
|----------------|--|-------------|-----|-------|-------|-------|-------|-------|-------|-------|-------|-------|-------|
| Solyc09g063070 | Senescence-associated protein-like | 33.99 | 101 | 0.015 | 0.016 | -1.36 | 0.044 | 1.13 | 0.212 | -1.54 | 0.011 | 0.11 | 0.696 |
| Solyc08g077950 | Unknown Protein | 35.2 | 292 | 0.015 | -0 | -1.18 | 0.175 | 1.22 | 0.035 | -1.44 | 0.028 | 0.32 | 0.245 |
| Solyc04g009550 | FGFR1 oncogene partner | 31.1 | 167 | -0.01 | 0.025 | -1.24 | 0.267 | -1.35 | 0.018 | 1.09 | 0.520 | -0.71 | 0.003 |
| Solyc03g082890 | Pentapeptide repeat protein | 35.2 | 362 | 0.014 | -0.02 | 1.16 | 0.291 | 1.29 | 0.018 | -1.11 | 0.417 | 0.64 | 0.01 |
| Solyc05g050840 | Unknown Protein | 35.2 | 331 | 0.014 | 0.031 | -1.63 | 0.019 | -1.08 | 0.388 | -1.51 | 0.027 | -0.32 | 0.245 |
| Solyc06g034290 | Glycerol-3-phosphate transporter | 34.98 | 483 | 0.014 | 0.026 | -1.56 | 0.024 | 1.01 | 0.892 | -1.58 | 0.028 | -0.12 | 0.67 |
| Solyc03g005670 | Cc-nbs-lrr, resistance protein | 20.1 | 29 | -0.01 | 0.015 | -1.11 | 0.431 | -1.34 | 0.008 | 1.21 | 0.173 | -0.51 | 0.052 |
| Solyc10g054870 | Triosephosphate isomerase | 1.3.5 | 156 | -0.01 | 0.058 | -2.18 | 0.024 | -1.84 | 0.040 | -1.18 | 0.483 | -0.51 | 0.052 |
| Solyc03g110920 | Receptor expression-enhancing protein 5 | 17.1.3 | 246 | -0.01 | 0.021 | -1.30 | 0.007 | -1.31 | 0.007 | 1.01 | 0.957 | -0.63 | 0.012 |
| Solyc01g079150 | AE family transporter anion exchange | 34.18 | 675 | -0.01 | 0.019 | -1.27 | 0.215 | -1.32 | 0.015 | 1.04 | 0.732 | -0.47 | 0.077 |
| Solyc08g013770 | F-box family protein | 35.2 | 280 | 0.013 | 0.148 | -6.64 | 0.000 | -3.85 | 0.060 | -1.73 | 0.247 | -0.40 | 0.14 |
| Solyc03g026020 | Heat stress transcription factor | 20.2.1 | 418 | 0.013 | 0.025 | -1.56 | 0.029 | 1.08 | 0.321 | -1.68 | 0.011 | -0.03 | 0.915 |
| Solyc02g093270 | Caffeoyl-CoA O-methyltransferase | 16.2.1.6 | 90 | -0.01 | -0.05 | 1.98 | 0.032 | 1.23 | 0.235 | 1.61 | 0.042 | 0.23 | 0.41 |
| Solyc06g050170 | Potassium transporter | 34.15 | 684 | 0.013 | 0.011 | -1.28 | 0.052 | 1.12 | 0.092 | -1.44 | 0.028 | 0.16 | 0.569 |
| Solyc08g005800 | Pectinacetyltransferase like protein | 10.8.2 | 730 | 0.013 | -0.05 | 1.87 | 0.003 | 1.42 | 0.009 | 1.32 | 0.255 | 0.66 | 0.007 |
| Solyc01g091770 | Ring H2 finger protein | 29.5.11.4.2 | 28 | 0.013 | -0.02 | 1.09 | 0.467 | 1.29 | 0.016 | -1.19 | 0.229 | 0.65 | 0.009 |
| Solyc10g039280 | Dual specificity protein phosphatase family protein | 35.2 | 482 | -0.01 | -0.03 | 1.59 | 0.003 | 1.00 | 0.944 | 1.58 | 0.006 | 0.20 | 0.475 |
| Solyc10g018850 | Dienelactone hydrolase family protein | 26.1 | 494 | 0.013 | 0.025 | -1.41 | 0.075 | 1.03 | 0.809 | -1.46 | 0.014 | -0.05 | 0.86 |
| Solyc09g089490 | Proteinase inhibitor I | 35.2 | 20 | 0.013 | 0.044 | -2.39 | 0.111 | 1.07 | 0.647 | -2.56 | 0.045 | -0.08 | 0.777 |
| Solyc09g007370 | Ribonuclease P protein subunit p29 | 27.1.19 | 22 | 0.013 | -0.04 | 1.68 | 0.087 | 1.49 | 0.026 | 1.13 | 0.570 | 0.62 | 0.014 |
| Solyc07g042540 | Unknown Protein | 35.2 | 168 | 0.012 | 0.045 | -2.18 | 0.001 | -1.21 | 0.340 | -1.81 | 0.039 | -0.34 | 0.215 |
| Solyc11g020590 | Peptide chain release factor-like protein | 29.2.5 | 359 | 0.012 | 0.018 | -1.49 | 0.031 | 1.08 | 0.460 | -1.61 | 0.047 | -0.06 | 0.832 |
| Solyc06g005290 | UDP-galactose transporter 5 | 34.1.1 | 451 | 0.012 | 0.018 | -1.36 | 0.009 | 1.06 | 0.447 | -1.44 | 0.061 | -0.06 | 0.832 |
| Solyc06g007720 | Unknown Protein | 35.2 | 25 | 0.012 | 0.032 | -1.58 | 0.007 | -1.05 | 0.530 | -1.51 | 0.002 | -0.24 | 0.389 |
| Solyc01g066880 | Copper chaperone | 15.2 | 65 | 0.012 | -0.01 | 1.03 | 0.863 | 1.25 | 0.020 | -1.21 | 0.073 | 0.71 | 0.003 |
| Solyc08g041800 | Unknown Protein | 35.2 | 382 | 0.012 | 0.028 | -1.52 | 0.007 | -1.05 | 0.733 | -1.45 | 0.043 | -0.15 | 0.594 |
| Solyc10g055800 | Chitinase | 20.1 | 206 | 0.012 | -0.1 | 3.08 | 0.100 | 2.54 | 0.022 | 1.21 | 0.724 | 0.73 | 0.002 |
| Solyc09g055710 | Unknown Protein | 35.2 | 461 | 0.012 | 0.036 | -1.70 | 0.002 | -1.08 | 0.542 | -1.57 | 0.022 | -0.11 | 0.696 |
| Solyc07g008430 | Unknown Protein | 35.2 | 717 | 0.011 | 0.015 | -1.25 | 0.026 | 1.09 | 0.209 | -1.37 | 0.040 | 0.05 | 0.86 |
| Solyc01g109430 | PPPDE peptidase domain-containing protein 1 | 17.5.2 | 457 | -0.01 | 0.027 | -1.40 | 0.124 | -1.38 | 0.013 | -1.02 | 0.815 | -0.62 | 0.014 |
| Solyc02g093950 | Ankyrin repeat family protein | 31.1 | 344 | 0.011 | 0.033 | -1.64 | 0.040 | -1.05 | 0.527 | -1.56 | 0.006 | -0.40 | 0.14 |
| Solyc10g086580 | Ribulose-1 5-bisphosphate carboxylase/oxygenase activase 1 | 1.3.13 | 627 | -0.01 | -0.07 | 2.39 | 0.048 | 1.37 | 0.183 | 1.74 | 0.010 | 0.41 | 0.129 |
| Solyc05g047610 | DHHC zinc finger domain containing protein expressed | 27.3.99 | 68 | -0.01 | -0.06 | 2.23 | 0.009 | 1.18 | 0.305 | 1.90 | 0.010 | 0.35 | 0.201 |
| Solyc05g024260 | RAG1-activating protein 1 homolog | 33.99 | 388 | 0.011 | 0.054 | -2.05 | 0.007 | -1.08 | 0.784 | -1.90 | 0.036 | -0.23 | 0.41 |
| Solyc06g062400 | Chloroplast unusual positioning 1A | 31.1 | 48 | 0.011 | 0.022 | -1.59 | 0.059 | -1.01 | 0.800 | -1.56 | 0.019 | -0.16 | 0.569 |
| Solyc06g053980 | Chlorophyllase 2 | 19.99 | 119 | -0.01 | -0.04 | 1.69 | 0.015 | -1.03 | 0.985 | 1.73 | 0.046 | 0.03 | 0.915 |
| Solyc04g081510 | Os01g0873900 protein | 35.2 | 599 | -0.01 | 0.018 | -1.08 | 0.493 | -1.29 | 0.020 | 1.19 | 0.253 | -0.44 | 0.101 |
| Solyc02g088150 | Pentatricopeptide repeat-containing protein | 17.8.1 | 50 | 0.01 | 0.053 | -2.17 | 0.014 | -1.21 | 0.325 | -1.80 | 0.066 | -0.30 | 0.277 |
| Solyc06g069780 | E3 ubiquitin-protein ligase MARCH3 | 29.5.11.4.2 | 572 | -0.01 | -0.02 | 1.42 | 0.065 | -1.03 | 0.633 | 1.47 | 0.005 | -0.15 | 0.594 |

Supplementary Table S1. continued

| | | | | | | | | | | | | | |
|----------------|---|---------------|-----|-------|-------|-------|-------|-------|-------|-------|-------|-------|-------|
| Solyc06g005050 | F-box/FBD/LRR-repeat protein At1g13570 | 29.5.11.4.3.2 | 662 | 0.01 | 0.026 | -1.46 | 0.005 | -1.05 | 0.684 | -1.39 | 0.072 | -0.12 | 0.67 |
| Solyc03g117960 | Tyrosyl-DNA phosphodiesterase family protein | 27.3.48 | 298 | -0.01 | 0.045 | -1.66 | 0.011 | -1.40 | 0.011 | -1.19 | 0.357 | -0.60 | 0.018 |
| Solyc06g007760 | Ycf54 protein | 35.2 | 575 | -0.01 | -0.04 | 1.61 | 0.042 | 1.12 | 0.382 | 1.44 | 0.033 | 0.21 | 0.453 |
| Solyc03g121970 | Unknown Protein | 35.2 | 544 | -0.01 | 0.026 | -1.39 | 0.047 | -1.28 | 0.002 | -1.09 | 0.545 | -0.66 | 0.007 |
| Solyc09g025270 | U-box domain-containing protein 3 | 29.5.11.4.2 | 355 | 0.01 | 0.017 | -1.37 | 0.031 | 1.03 | 0.703 | -1.41 | 0.031 | -0.08 | 0.777 |
| Solyc00g272810 | N-acetyltransferase | 26.24 | 27 | 0.01 | -0.05 | 1.88 | 0.143 | 1.69 | 0.023 | 1.12 | 0.191 | 0.61 | 0.016 |
| Solyc02g084290 | Unknown Protein | 35.2 | 460 | 0.01 | 0.036 | -1.82 | 0.012 | -1.12 | 0.365 | -1.63 | 0.020 | -0.29 | 0.294 |
| Solyc01g080900 | Cytochrome P450 | 26.10 | 17 | -0.01 | -0.03 | 1.77 | 0.014 | 1.13 | 0.320 | 1.56 | 0.065 | 0.45 | 0.092 |
| Solyc10g055810 | Endochitinase | 20.1 | 586 | -0.01 | -0.17 | 6.59 | 0.024 | 1.84 | 0.149 | 3.58 | 0.150 | 0.53 | 0.042 |
| Solyc08g075990 | Os02g0129300 protein | 35.2 | 226 | 0.009 | 0.019 | -1.47 | 0.012 | -1.01 | 0.947 | -1.45 | 0.025 | -0.26 | 0.349 |
| Solyc05g007670 | Ectonucleoside triphosphate diphosphohydrolase 1 | 23.2 | 462 | -0.01 | -0.02 | 1.37 | 0.026 | -1.05 | 0.564 | 1.44 | 0.035 | -0.04 | 0.887 |
| Solyc11g007690 | Pyruvate kinase | 11.1.30 | 476 | 0.009 | -0.01 | 1.09 | 0.583 | 1.28 | 0.012 | -1.18 | 0.184 | 0.48 | 0.07 |
| Solyc11g067270 | Acyltransferase-like protein | 16.2 | 243 | 0.008 | -0.12 | 4.07 | 0.048 | 2.25 | 0.047 | 1.81 | 0.259 | 0.29 | 0.294 |
| Solyc05g015500 | Zinc finger Ran-binding domain-containing protein 2 | 27.3.99 | 639 | 0.008 | 0.039 | -1.65 | 0.016 | -1.08 | 0.440 | -1.53 | 0.013 | -0.29 | 0.294 |
| Solyc09g091920 | Glucan endo-1 3-beta-glucosidase 4 | 26.4 | 79 | -0.01 | -0.02 | 1.49 | 0.039 | 1.00 | 0.992 | 1.49 | 0.028 | -0.01 | 0.972 |
| Solyc04g064740 | Os06g0207500 protein | 10.8.1 | 285 | -0.01 | -0.12 | 5.40 | 0.009 | 1.37 | 0.252 | 3.96 | 0.116 | 0.21 | 0.453 |
| Solyc03g121250 | 3'5' exonuclease domain-containing protein-like | 28.99 | 386 | -0.01 | 0.034 | -1.60 | 0.028 | -1.31 | 0.025 | -1.22 | 0.191 | -0.66 | 0.007 |
| Solyc12g005880 | Beta-1 3-galactosyltransferase 6 | 29.7 | 139 | 0.008 | 0.053 | -1.86 | 0.021 | -1.19 | 0.256 | -1.56 | 0.068 | -0.25 | 0.369 |
| Solyc03g119540 | CONSTANS-like zinc finger protein | 27.3.7 | 229 | 0.008 | -0.09 | 3.52 | 0.006 | 1.61 | 0.061 | 2.19 | 0.084 | 0.43 | 0.11 |
| Solyc04g072410 | Trafficking protein particle complex subunit 6B | 35.2 | 620 | -0.01 | -0.02 | 1.42 | 0.042 | 1.02 | 0.871 | 1.39 | 0.008 | -0.01 | 0.972 |
| Solyc11g066520 | Serine carboxypeptidase family protein expressed | 29.5.5 | 39 | -0.01 | -0.04 | 1.90 | 0.004 | 1.11 | 0.249 | 1.70 | 0.013 | 0.18 | 0.521 |
| Solyc05g007650 | Unknown protein | 35.2 | 91 | 0.007 | 0.076 | -3.60 | 0.022 | -1.32 | 0.215 | -2.72 | 0.054 | -0.22 | 0.431 |
| Solyc08g059700 | Genomic DNA chromosome 3 P1 clone MUJ8 | 35.2 | 393 | 0.007 | 0.127 | -4.38 | 0.013 | -1.63 | 0.027 | -2.70 | 0.001 | -0.37 | 0.175 |
| Solyc02g065040 | Unknown Protein | 35.2 | 179 | -0.01 | 0.08 | -2.78 | 0.016 | -1.50 | 0.027 | -1.85 | 0.131 | -0.37 | 0.175 |
| Solyc05g052470 | Ferritin | 15.2 | 299 | 0.007 | -0.04 | 1.80 | 0.020 | 1.30 | 0.067 | 1.38 | 0.162 | 0.46 | 0.084 |
| Solyc08g016500 | Potassium channel | 34.15 | 10 | 0.007 | 0.057 | -2.51 | 0.048 | -1.08 | 0.649 | -2.32 | 0.043 | -0.11 | 0.696 |
| Solyc11g066750 | AP-2 complex subunit alpha-1 | 31.4 | 659 | -0.01 | 0.033 | -1.57 | 0.064 | -1.26 | 0.022 | -1.25 | 0.222 | -0.58 | 0.023 |
| Solyc09g082390 | Pentatricopeptide repeat-containing protein | 33.99 | 216 | 0.006 | 0.027 | -1.50 | 0.027 | -1.10 | 0.117 | -1.36 | 0.010 | -0.31 | 0.261 |
| Solyc02g069450 | Photosystem I reaction center subunit III | 1.1.2.2 | 272 | 0.006 | -0.05 | 1.87 | 0.102 | 1.58 | 0.030 | 1.18 | 0.274 | 0.75 | 0.001 |
| Solyc02g083690 | Senescence-associated protein 12 | 33.99 | 56 | 0.006 | 0.045 | -2.00 | 0.020 | -1.27 | 0.175 | -1.58 | 0.062 | -0.41 | 0.129 |
| Solyc02g086160 | D-xylose transporter | 34.2 | 541 | 0.006 | -0.05 | 1.82 | 0.007 | 1.26 | 0.102 | 1.44 | 0.172 | 0.43 | 0.11 |
| Solyc03g115270 | Expansin | 10.7 | 122 | -0.01 | 0.03 | -1.45 | 0.016 | -1.35 | 0.025 | -1.07 | 0.625 | -0.54 | 0.038 |
| Solyc01g099260 | Chaperone protein dnaJ | 35.2 | 80 | -0.01 | -0.05 | 1.80 | 0.038 | 1.25 | 0.136 | 1.44 | 0.044 | 0.43 | 0.11 |
| Solyc02g088210 | Xenotropic and polytropic retrovirus receptor | 20.2 | 231 | -0.01 | 0.057 | -1.92 | 0.010 | -1.48 | 0.010 | -1.30 | 0.131 | -0.62 | 0.014 |
| Solyc00g050130 | UDP-glucose glucosyltransferase | 26.2 | 333 | 0.005 | 0.033 | -1.53 | 0.019 | -1.15 | 0.159 | -1.33 | 0.052 | -0.54 | 0.038 |
| Solyc06g083680 | Photosystem I reaction center subunit IV A | 1.1.2.2 | 721 | 0.005 | -0.04 | 1.49 | 0.077 | 1.24 | 0.037 | 1.21 | 0.216 | 0.34 | 0.215 |
| Solyc02g022930 | 3-hydroxyisobutyrate dehydrogenase-like protein | 7.1.3 | 103 | -0.01 | 0.04 | -1.80 | 0.013 | -1.31 | 0.088 | -1.38 | 0.114 | -0.50 | 0.058 |
| Solyc08g078300 | Homeobox-leucine zipper protein | 27.3.22 | 469 | -0.01 | 0.055 | -2.02 | 0.021 | -1.36 | 0.038 | -1.48 | 0.052 | -0.60 | 0.018 |

Supplementary Table S1. continued

| | | | | | | | | | | | | | |
|----------------|--|-----------------|-----|-------|-------|-------|-------|-------|-------|-------|-------|-------|-------|
| Solyc06g048590 | Transmembrane protein | 35.2 | 328 | -0 | -0.05 | 2.13 | 0.015 | 1.25 | 0.223 | 1.71 | 0.117 | 0.35 | 0.201 |
| Solyc08g005600 | Unknown Protein | 35.2 | 340 | 0.004 | -0.06 | 2.22 | 0.000 | 1.36 | 0.015 | 1.63 | 0.035 | 0.58 | 0.023 |
| Solyc05g007300 | Receptor expression-enhancing protein 5 | 17.1.1.3 | 198 | 0.004 | 0.054 | -2.74 | 0.003 | -1.23 | 0.297 | -2.23 | 0.014 | -0.31 | 0.261 |
| Solyc01g105100 | Endoplasmic reticulum-Golgi intermediate compartment protein 3 | 21.1 | 356 | 0.004 | -0.02 | 1.44 | 0.019 | 1.15 | 0.124 | 1.25 | 0.180 | 0.35 | 0.201 |
| Solyc12g005410 | Bile acid sodium symporter family protein | 34.1.4 | 324 | -0 | 0.046 | -1.81 | 0.038 | -1.29 | 0.049 | -1.40 | 0.033 | -0.32 | 0.245 |
| Solyc03g095810 | Os03g0291800 protein | 31.1 | 114 | -0 | 0.054 | -2.73 | 0.037 | -1.29 | 0.184 | -2.12 | 0.090 | -0.21 | 0.453 |
| Solyc04g071080 | Unknown Protein | 35.2 | 739 | 0.004 | 0.037 | -1.79 | 0.011 | -1.22 | 0.103 | -1.47 | 0.040 | -0.30 | 0.277 |
| Solyc03g082510 | Auxin-responsive family protein | 17.2.3 | 257 | 0.003 | 0.024 | -1.37 | 0.046 | -1.13 | 0.131 | -1.22 | 0.103 | -0.48 | 0.07 |
| Solyc06g084240 | Ent-copalyl diphosphate synthase | 16.1.5 | 33 | 0.002 | 0.06 | -2.31 | 0.004 | -1.37 | 0.128 | -1.68 | 0.085 | -0.36 | 0.187 |
| Solyc04g040000 | Unknown Protein | 35.2 | 164 | -0 | 0.031 | -1.47 | 0.022 | -1.34 | 0.024 | -1.10 | 0.572 | -0.51 | 0.052 |
| Solyc00g007030 | Glutathione S-transferase | 26.9 | 7 | 0.002 | -0.04 | 1.67 | 0.056 | 1.35 | 0.042 | 1.24 | 0.208 | 0.59 | 0.021 |
| Solyc11g065820 | Mate efflux family protein | 34.99 | 19 | 0.002 | 0.065 | -2.64 | 0.014 | -1.38 | 0.183 | -1.92 | 0.140 | -0.29 | 0.294 |
| Solyc05g005210 | Baculoviral IAP repeat-containing 2 | 29.5.11.4.2 | 145 | -0 | 0.027 | -1.55 | 0.037 | -1.16 | 0.089 | -1.33 | 0.132 | -0.29 | 0.294 |
| Solyc05g010560 | Unknown Protein | 35.2 | 220 | 0.001 | 0.04 | -1.63 | 0.026 | -1.15 | 0.247 | -1.42 | 0.064 | -0.31 | 0.261 |
| Solyc04g054310 | Alanine-glyoxylate aminotransferase | 13.1.1.3.11 | 498 | -0 | -0.06 | 2.02 | 0.024 | 1.24 | 0.079 | 1.63 | 0.061 | 0.41 | 0.129 |
| Solyc06g005560 | Expansin-1 | 10.7 | 545 | -0 | -0.04 | 1.79 | 0.022 | 1.25 | 0.088 | 1.43 | 0.032 | 0.50 | 0.058 |
| Solyc12g009200 | Chlorophyll a-b binding protein, chloroplastic | 1.1.1.1 | 76 | -0 | -0.04 | 1.67 | 0.035 | 1.28 | 0.057 | 1.30 | 0.085 | 0.59 | 0.021 |
| Solyc09g092230 | Unknown Protein | 35.2 | 75 | 0.001 | 0.028 | -1.54 | 0.028 | -1.23 | 0.009 | -1.25 | 0.084 | -0.54 | 0.038 |
| Solyc01g057910 | MYB transcription factor | 27.3.25 | 105 | 0.001 | 0.029 | -1.51 | 0.010 | -1.18 | 0.097 | -1.28 | 0.071 | -0.48 | 0.07 |
| Solyc06g082750 | 50S ribosomal protein L17 | 29.2.1.1.1.2.17 | 642 | 0 | -0.03 | 1.52 | 0.016 | 1.14 | 0.045 | 1.33 | 0.045 | 0.51 | 0.052 |
| Solyc03g078190 | Unknown Protein | 35.2 | 51 | 0 | 0.054 | -3.53 | 0.002 | -1.62 | 0.229 | -2.18 | 0.107 | -0.36 | 0.187 |
| Solyc10g045100 | Phosphoglycerate mutase | 4.1.12 | 104 | 0 | 0.068 | -3.04 | 0.002 | -1.43 | 0.069 | -2.12 | 0.015 | -0.49 | 0.064 |
| Solyc12g099790 | Calcium-dependent protein kinase 17 | 29.4 | 4 | 0 | 0.067 | -2.48 | 0.001 | -1.51 | 0.027 | -1.65 | 0.056 | -0.56 | 0.03 |
| Solyc05g049970 | Mitogen-activated protein kinase 4 | 29.4 | 434 | 0 | 0.039 | -1.91 | 0.009 | -1.22 | 0.149 | -1.57 | 0.039 | -0.28 | 0.312 |
| Solyc01g090330 | Unknown Protein | 35.2 | 131 | 0 | 0.089 | -3.90 | 0.004 | -1.53 | 0.015 | -2.54 | 0.017 | -0.34 | 0.215 |

Supplementary Table S2. Auxin-related cis-acting regulatory elements

The 1500bp 5'-upstream region of the tomato genes *SIARF9*, *SIIAA2* and *SIIAA14* were analysed by PlantCARE (Lescot et al., 2002) and PLACE (Higo et al., 1999). The position of the elements from the translation start site (TSS) is indicated.

| promoter | element | sequence | +/- strand | position from TSS |
|----------------|---------------|----------|------------|-------------------|
| <i>SIARF9</i> | AuxRE | TGTCNC | + | -1385 |
| | AuxRE | TGTCTN | - | -773 |
| | NTBBF1ARROLB | ACTTTA | + | -1108 |
| | NTBBF1ARROLB | ACTTTA | + | -180 |
| | NTBBF1ARROLB | ACTTTA | + | -173 |
| <i>SIIAA2</i> | AuxRE | TGTCNC | + | -527 |
| | AuxRE | TGTCTN | + | -846 |
| | AuxRE | TGTCTN | + | -552 |
| | AuxRE | TGTCTN | - | -513 |
| | CATATGGMSAUR | CATATG | + | -819 |
| | CATATGGMSAUR | CATATG | + | -218 |
| | NTBBF1ARROLB | ACTTTA | + | -1054 |
| | NTBBF1ARROLB | ACTTTA | + | -763 |
| | NTBBF1ARROLB | ACTTTA | - | -1034 |
| | NTBBF1ARROLB | ACTTTA | - | -1009 |
| | NTBBF1ARROLB | ACTTTA | - | -963 |
| | ASF1MOTIFCAMV | TGACG | + | -1000 |
| | AuxRR-core | GGTCCAT | + | -682 |
| | TGA-element | AACGAC | + | -1066 |
| <i>SIIAA14</i> | AuxRE | TGTCNC | - | -675 |
| | AuxRE | TGTCTN | - | -366 |
| | NTBBF1ARROLB | ACTTTA | + | -1087 |

Supplementary Table S3. SIARF9 expression during tomato fruit set

| Stage | Relative expression ^{a,b} |
|----------|------------------------------------|
| Anthesis | -2.300 (A) |
| 3-4 mm | 0.808 (C) |
| 5-6 mm | -0.380 (BC) |
| 7-8 mm | -0.697 (B) |
| 13-14 mm | -1.560 (AB) |

^a, 2log transformed relative expression data as presented in figures 3A and 3B were used for statistical analysis; ^b, Capital characters between brackets indicate homogenous categories (Tukey) with differences at $P < 0.05$.

Supplementary Table S4. Leading edge subsets from the GSEA comparing the transcriptomes of the *SIARF9*-OE and *SIARF9*-RNAi lines

List of genes that contributed to the enrichment score of the four gene sets (17.3.1, brassinosteroid synthesis and degradation; 17.3.1.2, brassinosteroid synthesis and degradation (sterols); 22.1, polyamine synthesis; 31.5, cell death). The FDR-value for each subset is indicated in parentheses. For each gene, the fold change in expression and correlation to *SIARF9* transcript levels are shown.

| MapMan Bin (FDR) | ID | ITAG 2.3 Hit description | OE vs RNAi | | OE vs WT | | RNAi vs WT | | Pearson correlation to <i>SIARF9</i> | |
|---------------------|----------------|--|-------------|---------|-------------|---------|-------------|---------|---|---------|
| | | | Fold change | P-value | Fold change | P-value | Fold change | P-value | r | P-value |
| 17.3.1 (0.204) | | | | | | | | | | |
| 17.3.1.2 (0.221) | | | | | | | | | | |
| 22.1 (0.160) | | | | | | | | | | |
| 31.5 (0.232) | | | | | | | | | | |
| | solyc06g082980 | 3-beta-hydroxysteroid-Delta8 Delta7-isomerase | -1.10 | 0.073 | 1.00 | 0.946 | 1.11 | 0.244 | -0.35 | 0.202 |
| | solyc05g008680 | 24-sterol C-methyltransferase | -1.08 | 0.464 | 1.10 | 0.849 | 1.19 | 0.305 | -0.45 | 0.092 |
| | solyc04g077440 | Squalene monooxygenase | -1.05 | 0.226 | 1.04 | 0.610 | 1.10 | 0.346 | -0.05 | 0.856 |
| | solyc09g009040 | Delta14-sterol reductase | -1.05 | 0.600 | -1.05 | 0.702 | 1.01 | 0.979 | 0.14 | 0.628 |
| | solyc00g085070 | Squalene monooxygenase | -1.05 | 0.394 | 1.08 | 0.588 | 1.13 | 0.064 | -0.07 | 0.794 |
| | solyc11g006300 | 3-oxo-5-alpha-steroid 4-dehydrogenase family protein | -1.61 | 0.228 | -1.97 | 0.090 | -1.22 | 0.671 | -0.27 | 0.325 |
| | solyc10g086500 | 3-oxo-5-alpha-steroid 4-dehydrogenase family protein expressed | -1.31 | 0.014 | 1.14 | 0.501 | 1.49 | 0.022 | -0.35 | 0.205 |
| | solyc06g074090 | Sterol reductase | -1.19 | 0.010 | -1.07 | 0.647 | 1.11 | 0.334 | -0.44 | 0.098 |
| | solyc02g030170 | FAD linked oxidase domain protein | -1.16 | 0.160 | 1.01 | 0.979 | 1.18 | 0.191 | -0.35 | 0.207 |
| | solyc02g069490 | FAD linked oxidase domain protein | -1.21 | 0.024 | 1.02 | 0.861 | 1.24 | 0.082 | -0.58 | 0.023 |
| | solyc02g063240 | Sterol C-5 desaturase | -1.16 | 0.224 | 1.09 | 0.709 | 1.27 | 0.188 | -0.47 | 0.076 |
| | solyc02g086180 | Sterol C-5 desaturase | -1.19 | 0.032 | -1.01 | 0.981 | 1.18 | 0.193 | -0.45 | 0.092 |
| | solyc10g080150 | 24-sterol C-methyltransferase | -1.25 | 0.232 | -1.07 | 0.690 | 1.17 | 0.564 | -0.13 | 0.644 |
| | solyc02g077780 | Necrotic spotted lesions 1 (Fragment) | -1.18 | 0.302 | 1.08 | 0.638 | 1.27 | 0.332 | -0.39 | 0.156 |
| | solyc09g018030 | Necrotic spotted lesions 1 (Fragment) | -1.18 | 0.140 | -1.53 | 0.055 | -1.30 | 0.088 | -0.35 | 0.206 |
| | solyc01g005220 | Necrotic spotted lesions 1 (Fragment) | -1.53 | 0.161 | 1.40 | 0.166 | 2.14 | 0.126 | -0.37 | 0.180 |
| | solyc06g068850 | Genomic DNA chromosome 5 TAC clone K22G18 | -1.15 | 0.163 | -1.22 | 0.266 | -1.06 | 0.518 | -0.41 | 0.125 |

Supplementary Table S4. continued

| | | | | | | | | | | | | | |
|--|--|--|--|----------------|--|-------|-------|-------|-------|-------|-------|-------|-------|
| | | | | solyc02g094130 | Genomic DNA chromosome 5 P1 clone MJC20 | -1.16 | 0.174 | 1.07 | 0.679 | 1.24 | 0.198 | -0.51 | 0.051 |
| | | | | solyc01g103490 | Necrotic spotted lesions 1 (Fragment) | -1.13 | 0.190 | 1.02 | 0.937 | 1.15 | 0.341 | -0.34 | 0.221 |
| | | | | solyc10g076340 | Kelch-like protein | -1.27 | 0.290 | -1.24 | 0.412 | 1.02 | 0.968 | -0.34 | 0.220 |
| | | | | solyc04g048950 | Necrotic spotted lesions 1 (Fragment) | -1.16 | 0.088 | -1.03 | 0.784 | 1.13 | 0.164 | -0.37 | 0.179 |
| | | | | solyc02g071780 | Necrotic spotted lesions 1 (Fragment) | -1.48 | 0.070 | 1.06 | 0.896 | 1.57 | 0.194 | -0.65 | 0.009 |
| | | | | solyc10g085710 | Necrotic spotted lesions 1 (Fragment) | -1.16 | 0.122 | 1.05 | 0.719 | 1.21 | 0.179 | -0.40 | 0.137 |
| | | | | solyc09g098070 | Necrotic spotted lesions 1 (Fragment) | -1.15 | 0.230 | -1.08 | 0.317 | 1.06 | 0.800 | -0.43 | 0.111 |
| | | | | solyc10g054440 | Arginine decarboxylase | -1.23 | 0.244 | 1.12 | 0.575 | 1.37 | 0.237 | -0.18 | 0.532 |
| | | | | solyc02g089610 | S-adenosylmethionine decarboxylase proenzyme | -1.32 | 0.078 | -1.35 | 0.503 | -1.03 | 0.808 | -0.34 | 0.221 |
| | | | | solyc01g110440 | Arginine decarboxylase | -1.23 | 0.232 | 1.08 | 0.617 | 1.34 | 0.278 | -0.17 | 0.539 |
| | | | | solyc05g005710 | Spermidine synthase | -1.18 | 0.036 | -1.02 | 0.911 | 1.16 | 0.200 | -0.33 | 0.234 |
| | | | | solyc01g080380 | S-adenosylmethionine decarboxylase proenzyme | -1.17 | 0.107 | 1.11 | 0.324 | 1.29 | 0.122 | -0.32 | 0.252 |
| | | | | solyc03g007240 | Spermidine synthase 1 | -1.18 | 0.128 | -1.10 | 0.738 | 1.07 | 0.579 | -0.16 | 0.567 |
| | | | | solyc06g054460 | S-adenosylmethionine decarboxylase proenzyme | -1.28 | 0.125 | 1.13 | 0.370 | 1.44 | 0.170 | -0.32 | 0.246 |