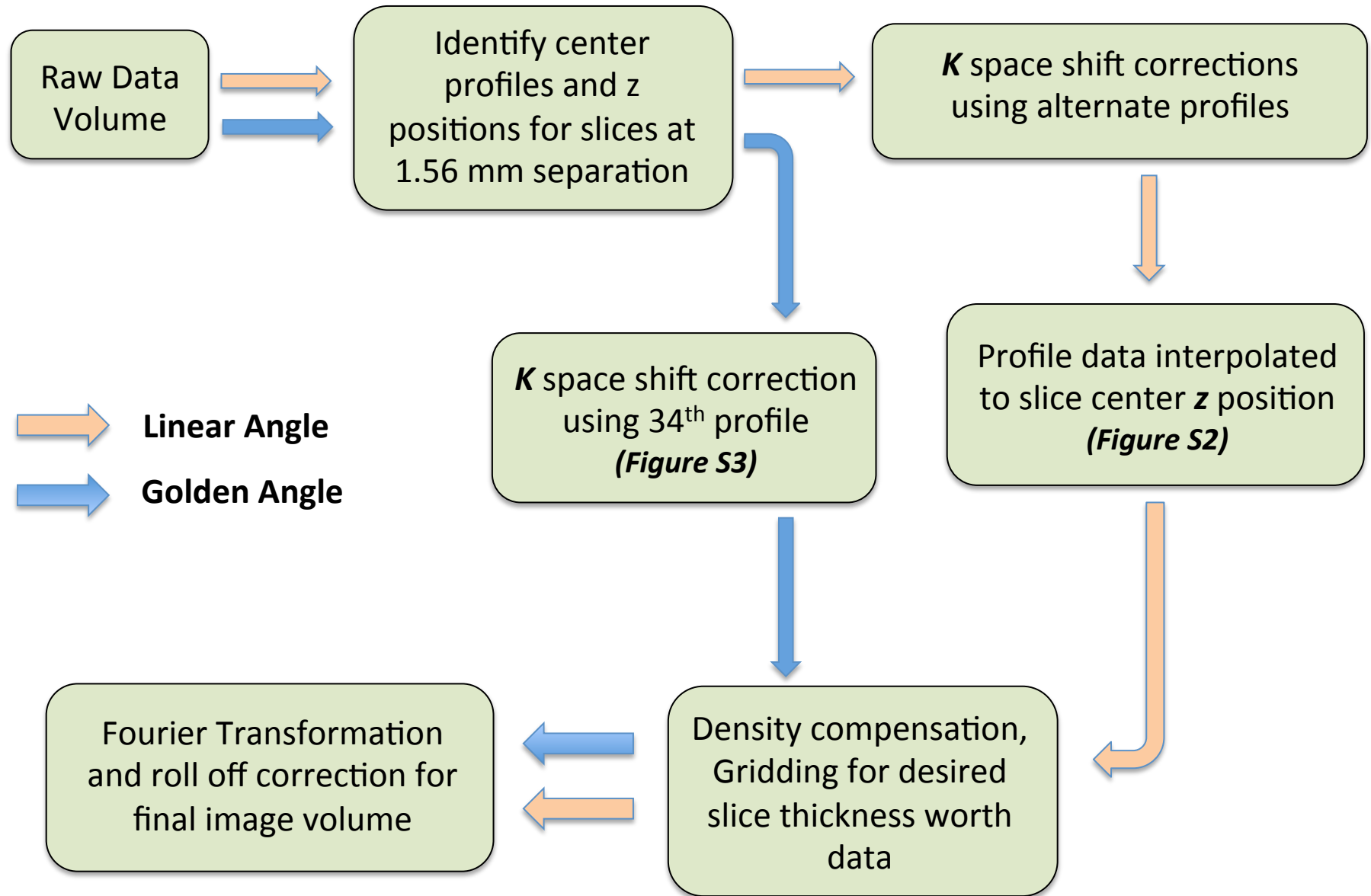
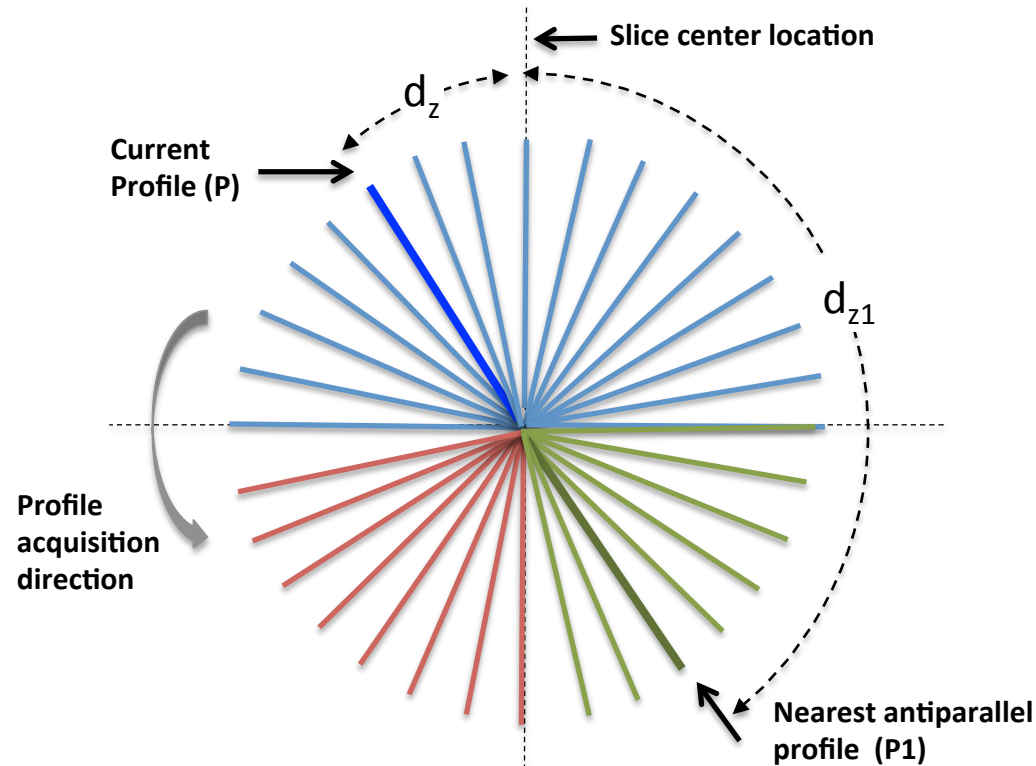


SUPPORTING FIGURE S1 : RECONSTRUCTION FLOW FOR LINEAR AND GOLDEN ANGLE CMT MRI



SUPPORTING FIGURE S2 : INTERPOLATION FOR LINEAR ANGLE CMT MRI



Blue spokes : N profiles around current slice center position

Green spokes : Last $N/2$ profiles of preceding slice

Red spokes : First $N/2$ profiles of next slice

d_z = Z distance between current profile and slice center

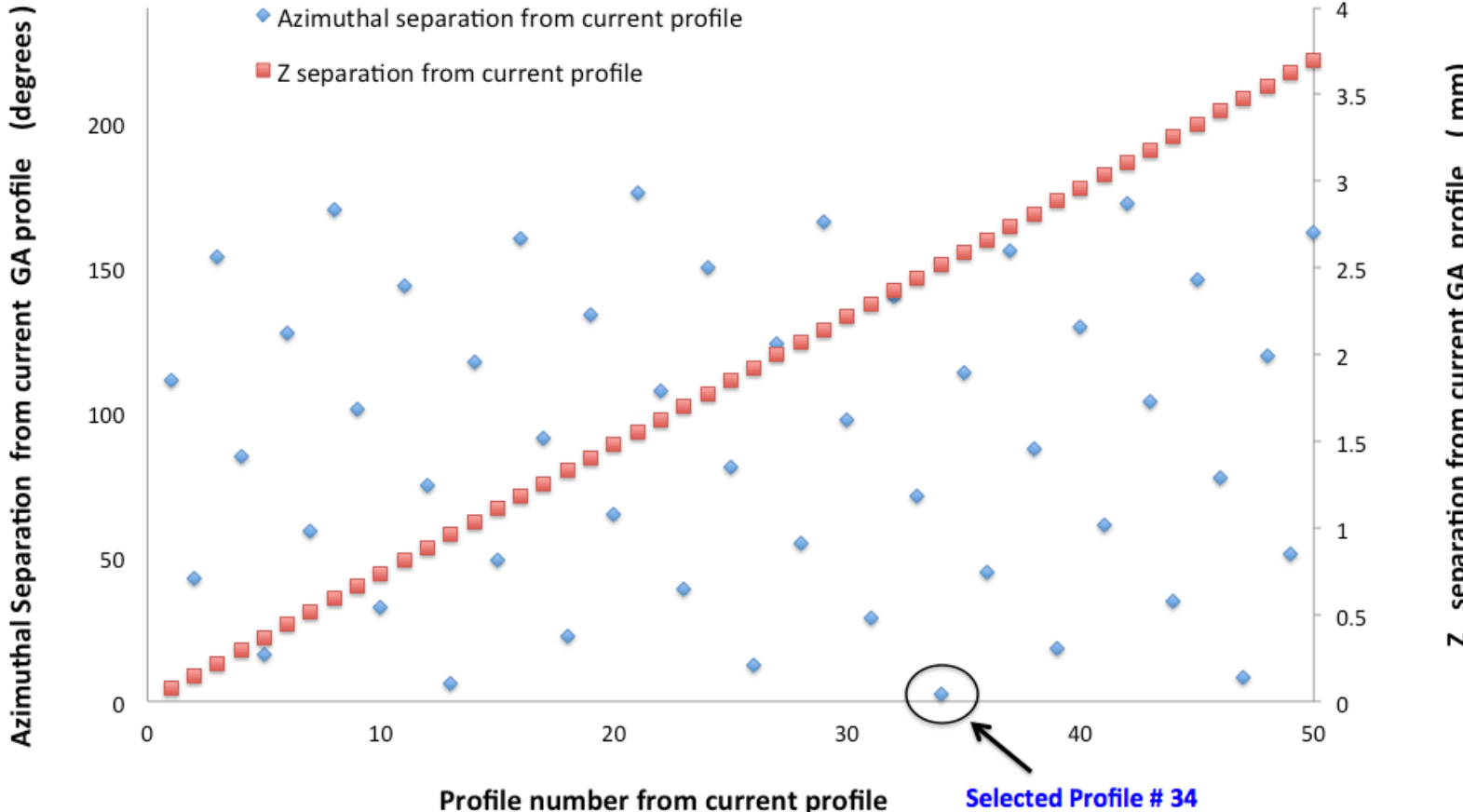
d_{z1} = Z distance between antiparallel profile and slice center

Interpolated Profile at slice center = $(d_{z1} * P + d_z * P1) / (d_{z1} + d_z)$

Note : Only half spokes are shown for clarity.

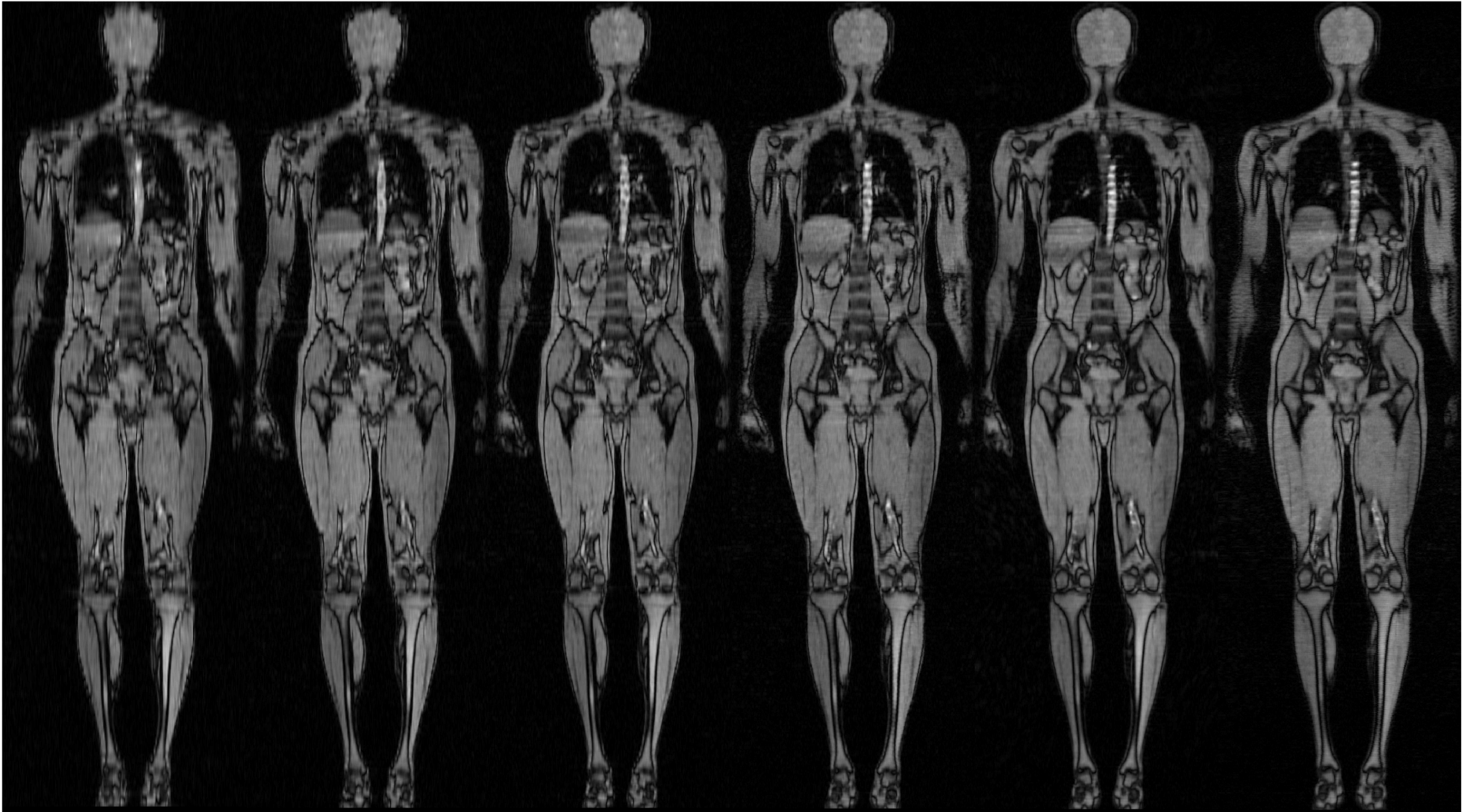
SUPPORTING FIGURE S3 : ANTI-PARALLEL PROFILE SELECTION FOR K SPACE SHIFT CORRECTION IN GOLDEN ANGLE CMT MRI

Golden Angle profile plot illustrating antiparallel profile selection



SUPPORTING FIGURE S4 : LA CORONAL REFORMATS

LINEAR ANGLE CORONAL REFORMATS LEFT - RIGHT : 18.9 mm (256 pps) , 15 mm (203 pps) , 12 mm (162 pps) , 9 mm (122 pps) , 6 mm (81 pps) , 5 mm (68 pps)



pps: profiles per slice

SUPPORTING FIGURE S5 : GA CORONAL REFORMATS

GOLDEN ANGLE CORONAL REFORMATS LEFT - RIGHT : 18.9 mm (256 pps) , 15 mm (203 pps) , 12 mm (162 pps) , 9 mm (122 pps) , 6 mm (81 pps) , 5 mm (68 pps)

