

Figure S1. Viability stain of seven day old cultures of *C. gattii* VGIIa, VGIIb and *C. neoformans* used for the isolation of secreted proteins. There is no evidence of cell death or lysis in the untreated cultures. Scale bar = 20 μ m.

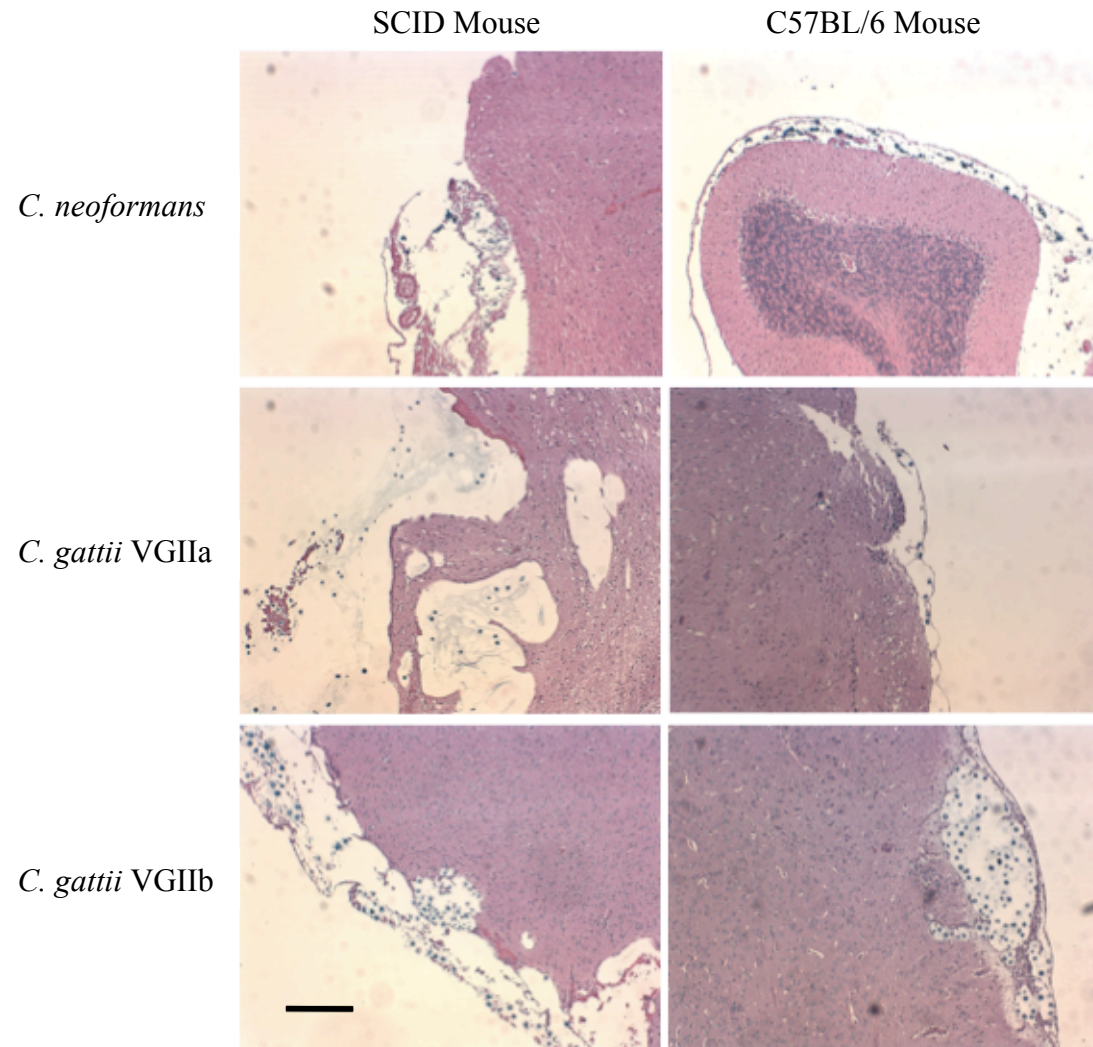


Figure S2. Representative H&E sections showing cryptococcal cell burden in intracranially infected SCID and C57BL/6 mouse brains. Alcian Blue counter-staining shows blue *Cryptococcus* cells, which are confined to the meninges. There is a considerably higher fungal burden in brains infected with *C. neoformans* and *C. gattii* VGIIb than in those infected with *C. gattii* VGIIa . Scale bars = 150 μ m.