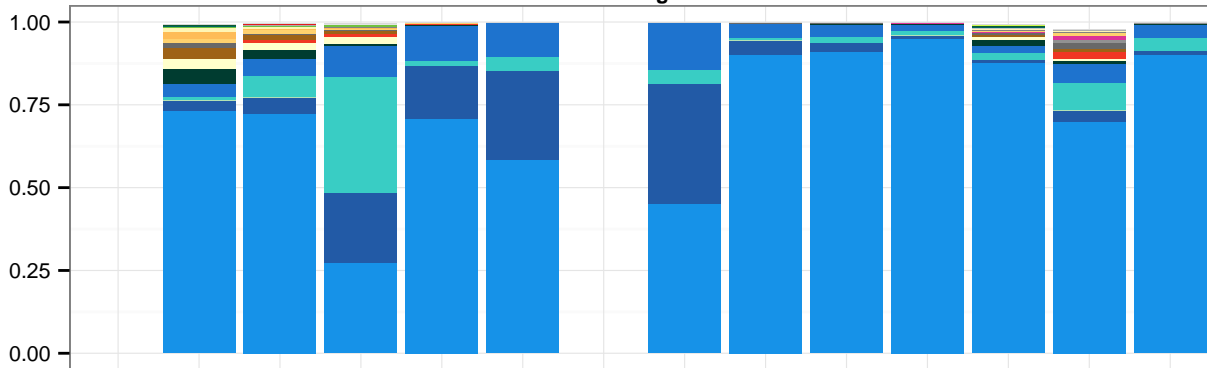
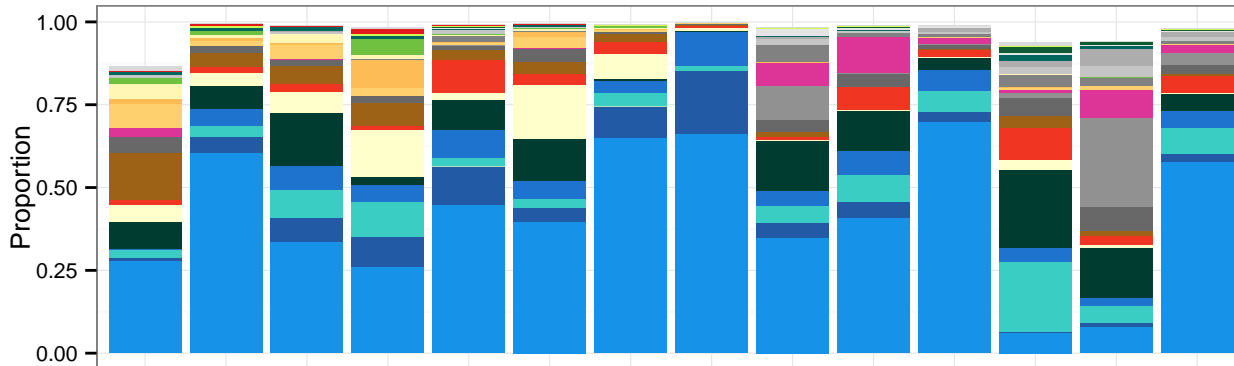


Subject 101: Black, non-Hispanic, 10.7 y/o at enrollment

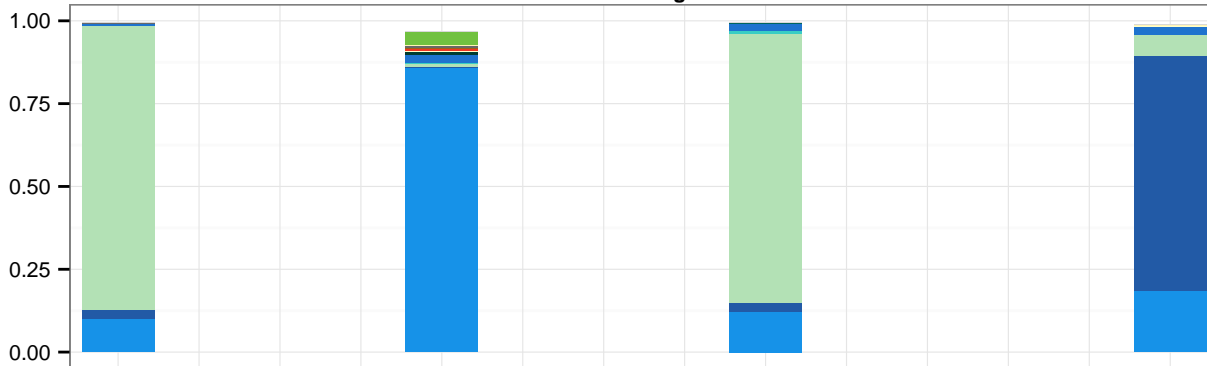
Girl Vagina



Girl Vulva

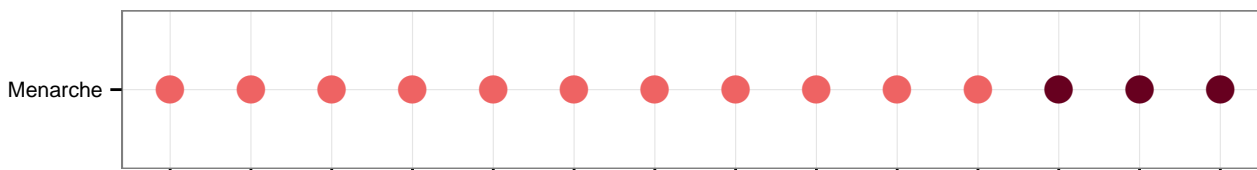


Mother Vagina



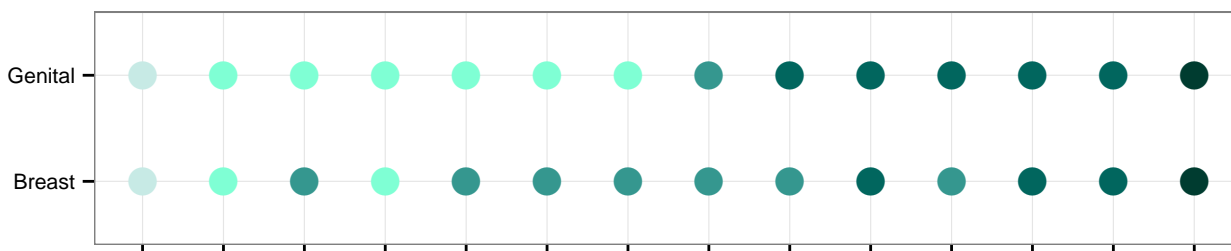
Taxon

- Lactobacillus_iners
- Lactobacillus_jensenii
- Lactobacillus_crispatus
- Lactobacillus_gasseri
- Lactobacillus_Other
- Prevotella
- Anaerococcus
- Finegoldia
- Peptoniphilus
- Other_Bacteria
- Jonquetella
- Bifidobacterium
- Clostridiales
- Clostridiales_Incertae_Sedis_XI
- Megaspheara
- Anaerospheara
- Corynebacterium
- Dialister
- Fusobacterium
- Porphyromonas
- Atopobium
- Segniliparus
- Actinomycetales
- Gallicola
- Campylobacter



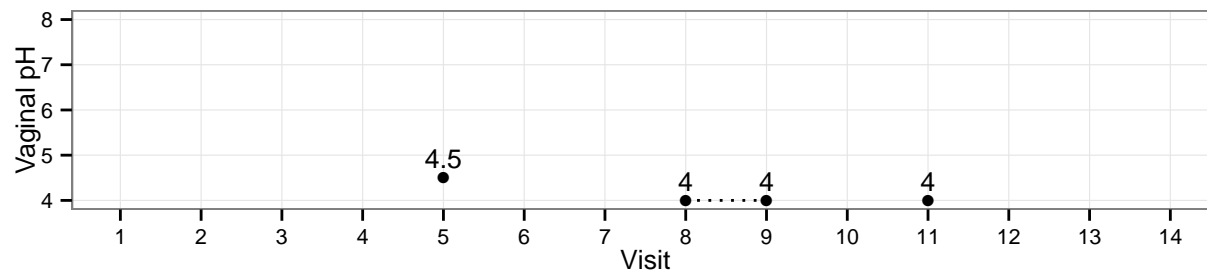
Menarche status

- Pre
- Post



Tanner stage

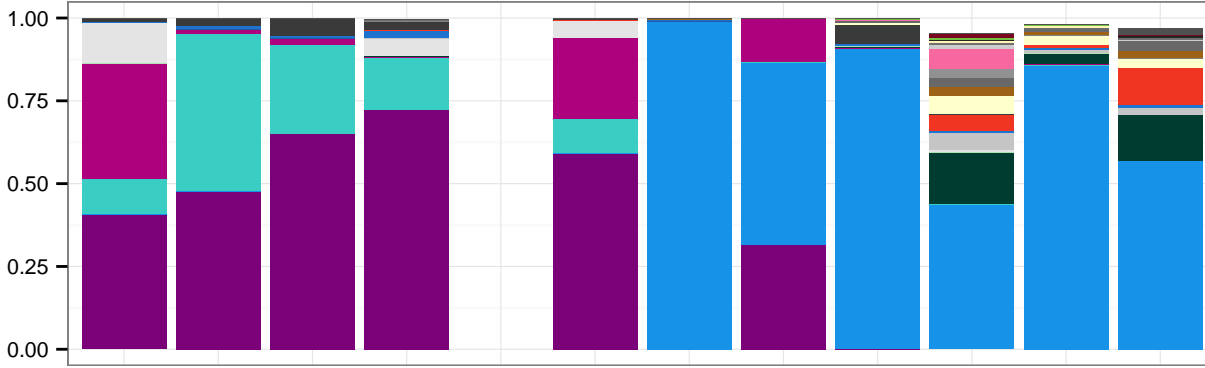
- 1
- 2
- 3
- 4
- 5



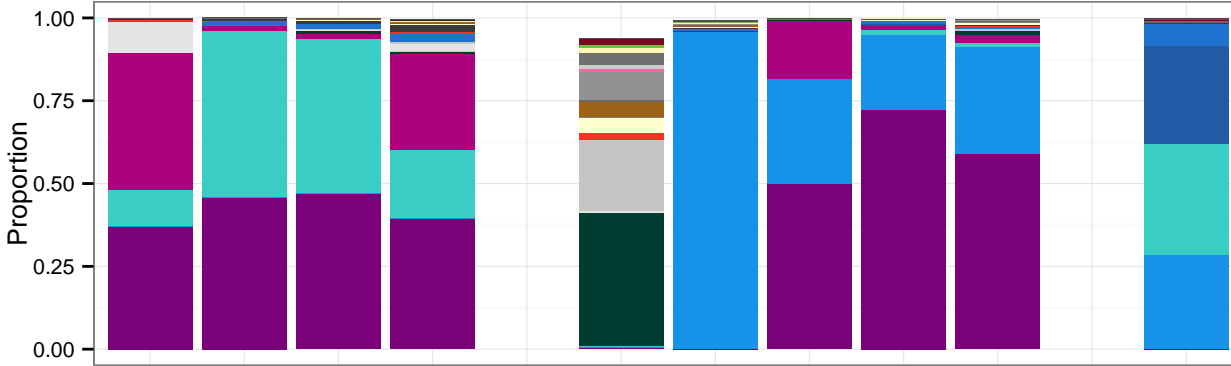
Visit

Subject 102: Caucasian, non-Hispanic, 10.8 y/o at enrollment

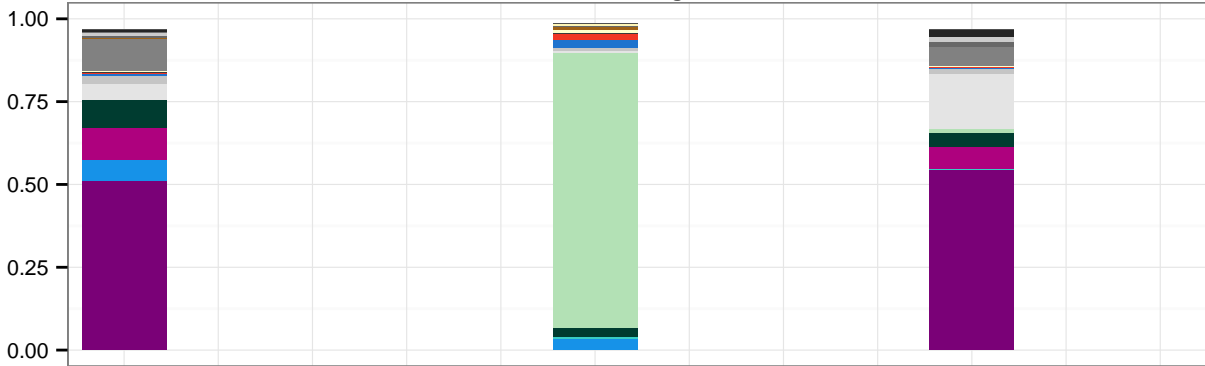
Girl Vagina



Girl Vulva

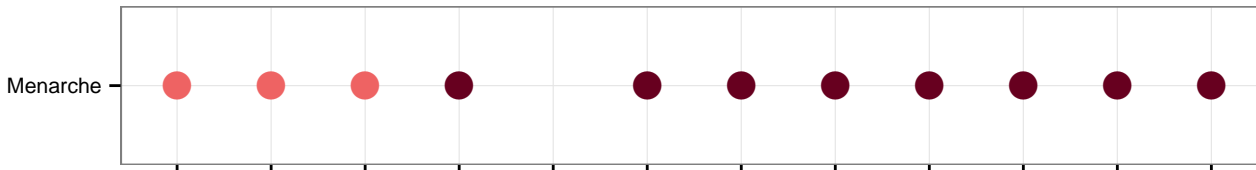


Mother Vagina



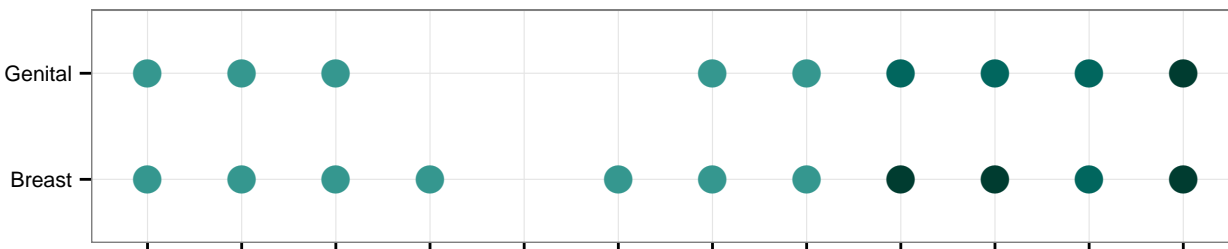
Taxon

- Gardnerella_vaginalis
- Lactobacillus_iners
- Lactobacillus_gasseri
- Gardnerella_Other
- Prevotella
- Lactobacillus_crispatus
- Atopobium
- Dialister
- Lactobacillus_jensenii
- Lactobacillus_Other
- Finegoldia
- Ureaplasma
- Anaerococcus
- Megasphaera
- Peptoniphilus
- Other_Bacteria
- Jonquetella
- Alloscardovia
- Coriobacteriaceae
- Olsenella
- Anaerosphaera
- Veillonellaceae
- Corynebacterium
- Moryella
- Staphylococcus



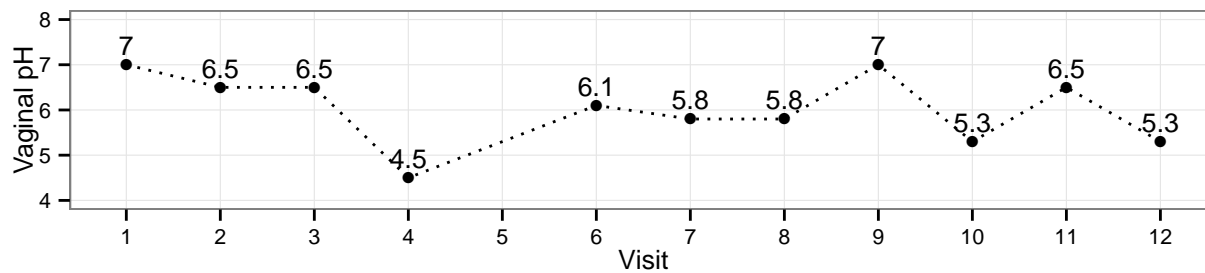
Menarche status

- Pre
- Post



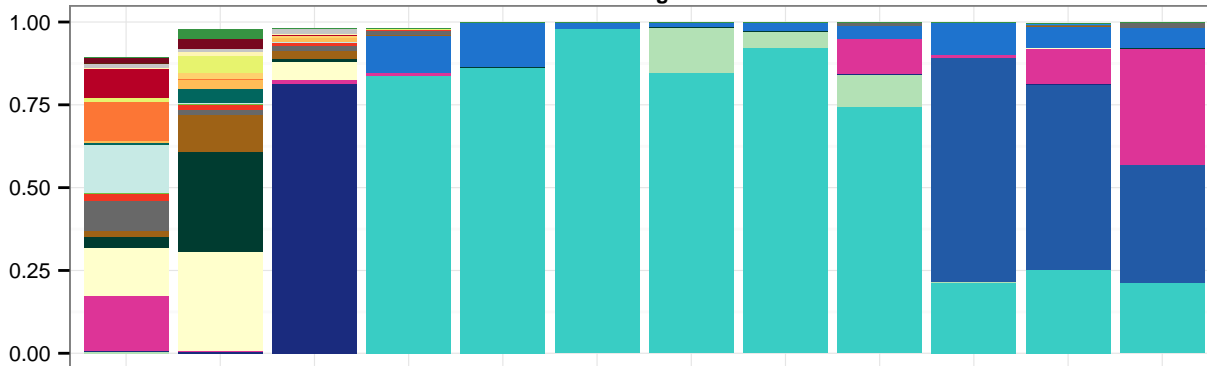
Tanner stage

- 1
- 2
- 3
- 4
- 5

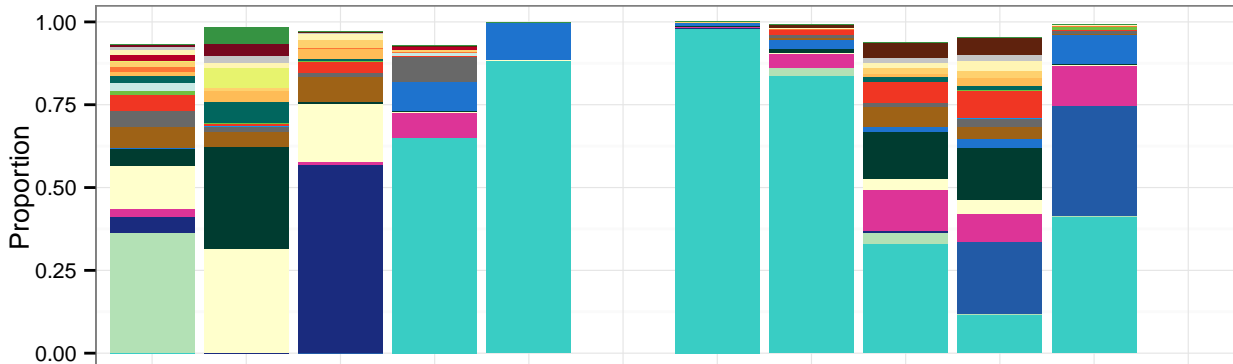


Subject 103: Black, non-Hispanic, 10.7 y/o at enrollment

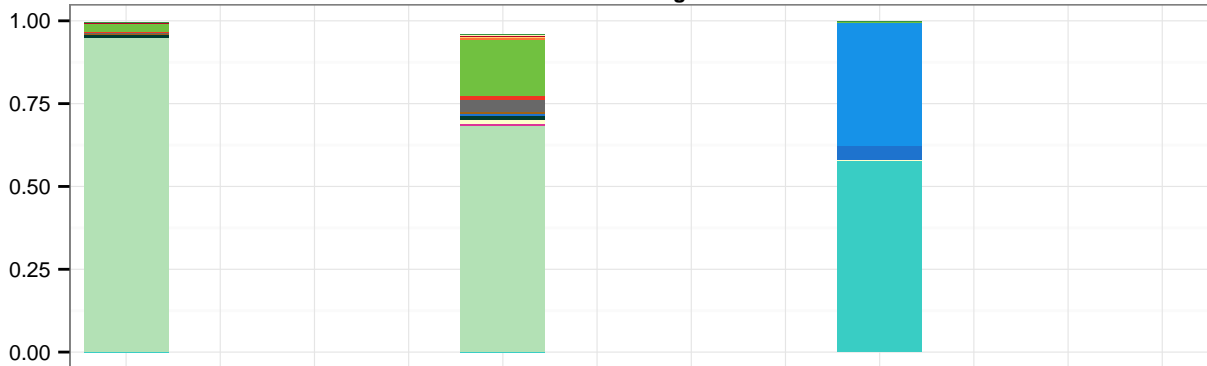
Girl Vagina



Girl Vulva



Mother Vagina



Taxon

- Lactobacillus_gasseri
- Lactobacillus_crispatus
- Lactobacillus_jensenii
- Streptococcus_anginosus
- Bifidobacterium
- Anaerococcus
- Prevotella
- Lactobacillus_Other
- Peptoniphilus
- Other_Bacteria
- Lactobacillus_iners
- Finegoldia
- Corynebacterium
- Bacteroides
- Porphyromonas
- Clostridiales_Incertae_Sedis_XI
- Faecalibacterium
- Clostridiales
- Actinomyces
- Lachnospiraceae_incertae_sedis
- Anaerosphaera
- Dialister
- Murdochiella
- Moryella
- Mobiluncus

Menarche

Menarche status

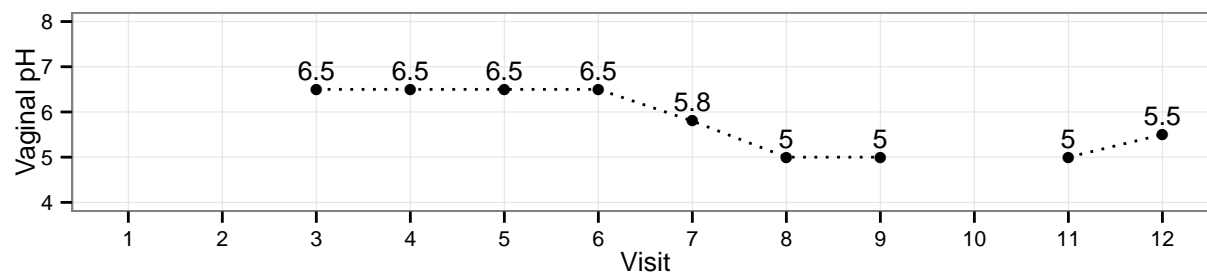
- Pre
- Post

Genital

Tanner stage

- 1
- 2
- 3
- 4
- 5

Breast

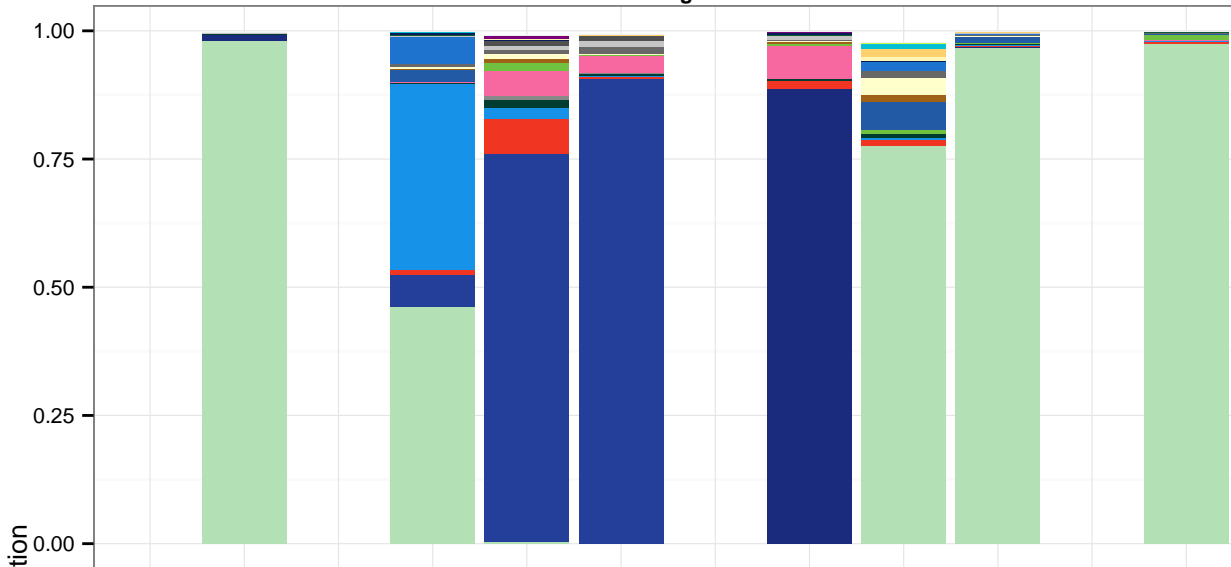


Vaginal pH

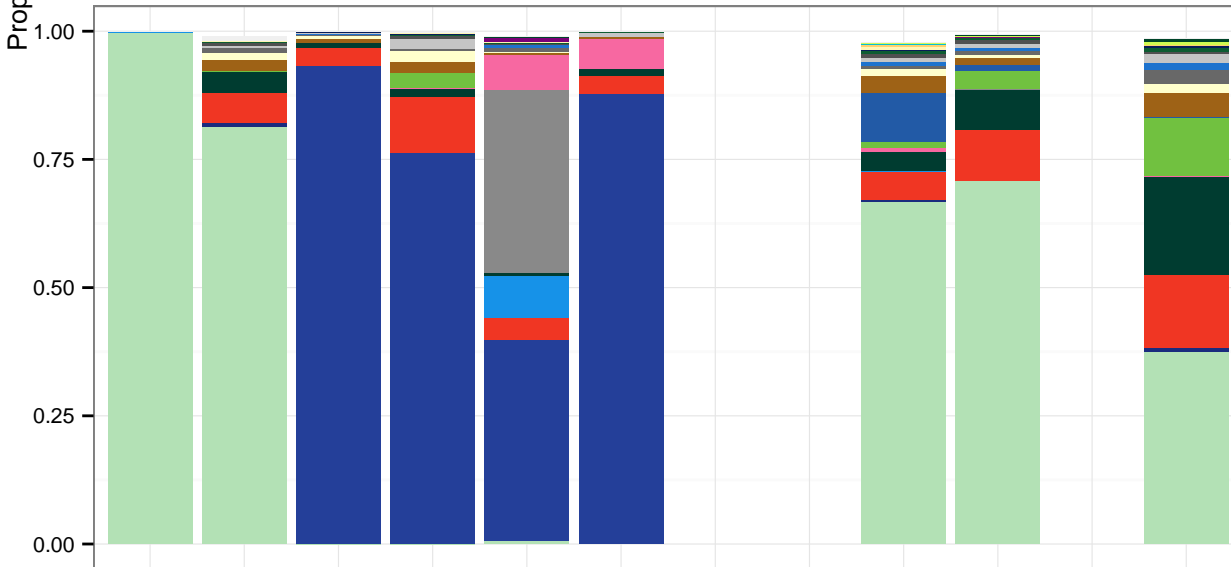
Visit

Subject 104: Caucasian, non-Hispanic, 10.5 y/o at enrollment

Girl Vagina



Girl Vulva



Taxon

- Lactobacillus_crispatus
- Streptococcus_agalactiae
- Streptococcus_anginosus
- Finegoldia
- Lactobacillus_iners
- Prevotella
- Klebsiella
- Alloscardovia
- Corynebacterium
- Lactobacillus_jensenii
- Peptoniphilus
- Anaerococcus
- Other_Bacteria
- Lactobacillus_Other
- Dialister
- Staphylococcus
- Segniliparus
- Streptococcus_Other
- Anaerosphaera
- Clostridiales
- Lactobacillus_gigeriorum
- Gardnerella_vaginalis
- Actinomycetales
- Varibaculum
- Acidovorax

Menarche

Menarche status

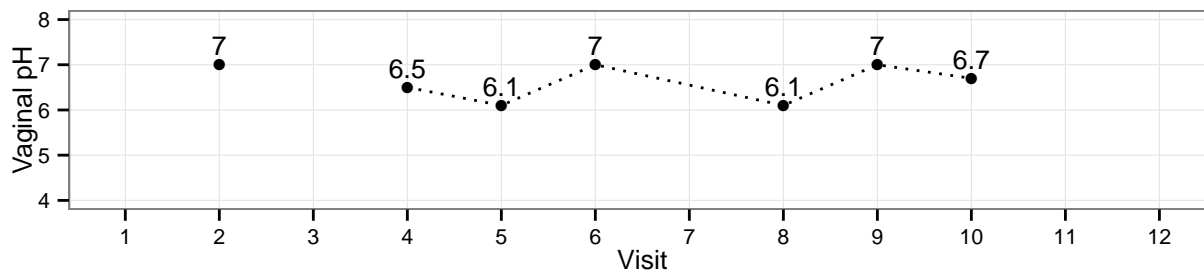
- Pre
- Post

Genital

Breast

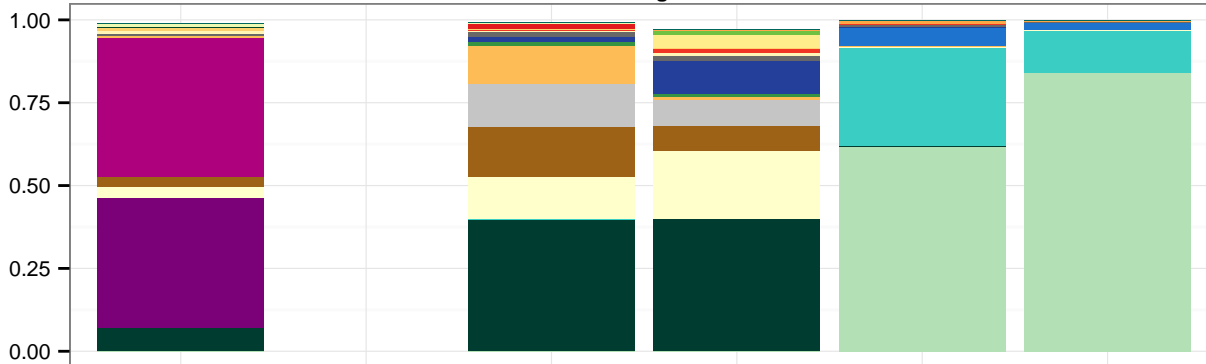
Tanner stage

- 1
- 2
- 3
- 4
- 5

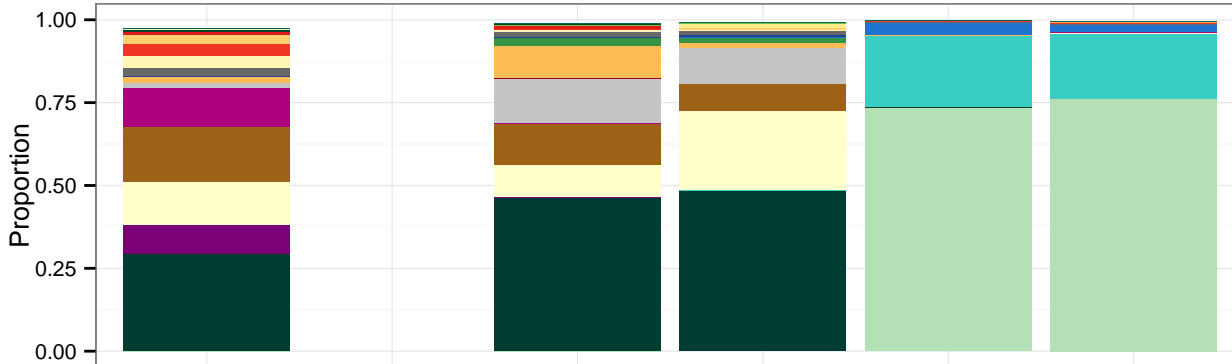


Subject 105: Caucasian, Hispanic, 10.2 y/o at enrollment

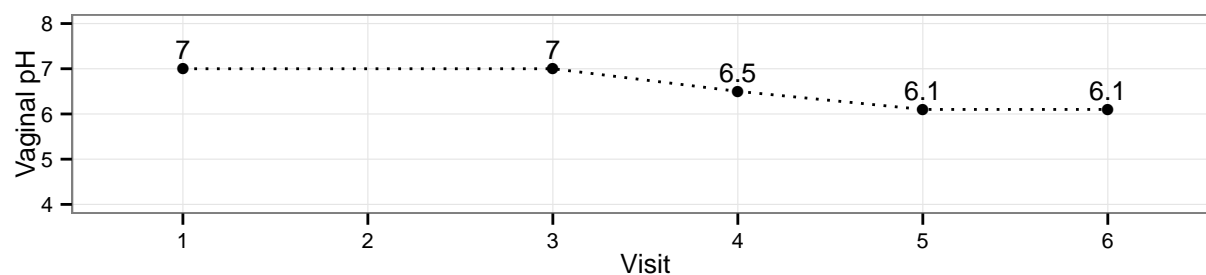
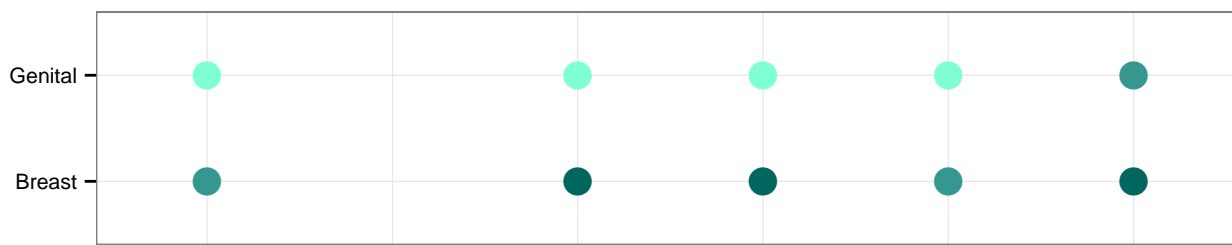
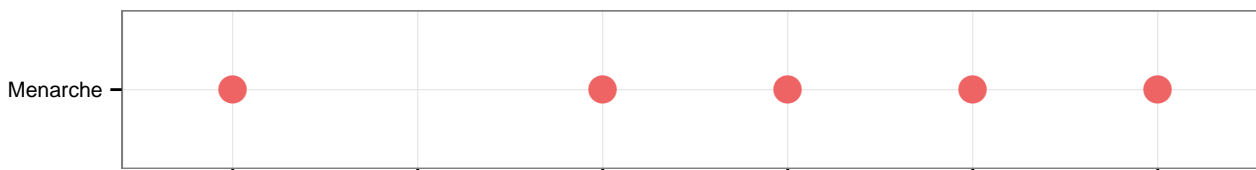
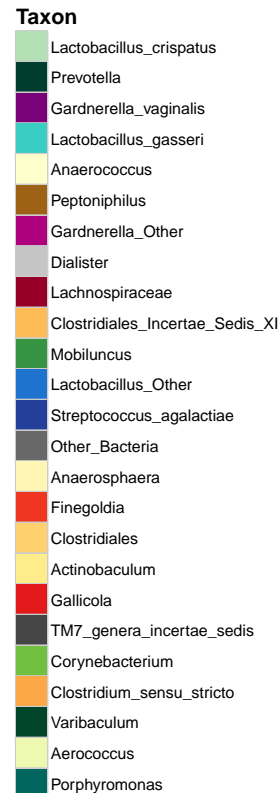
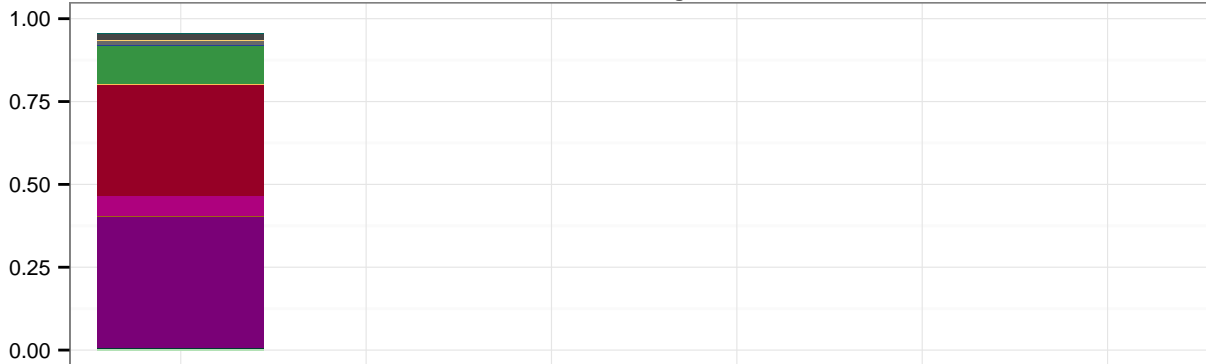
Girl Vagina



Girl Vulva

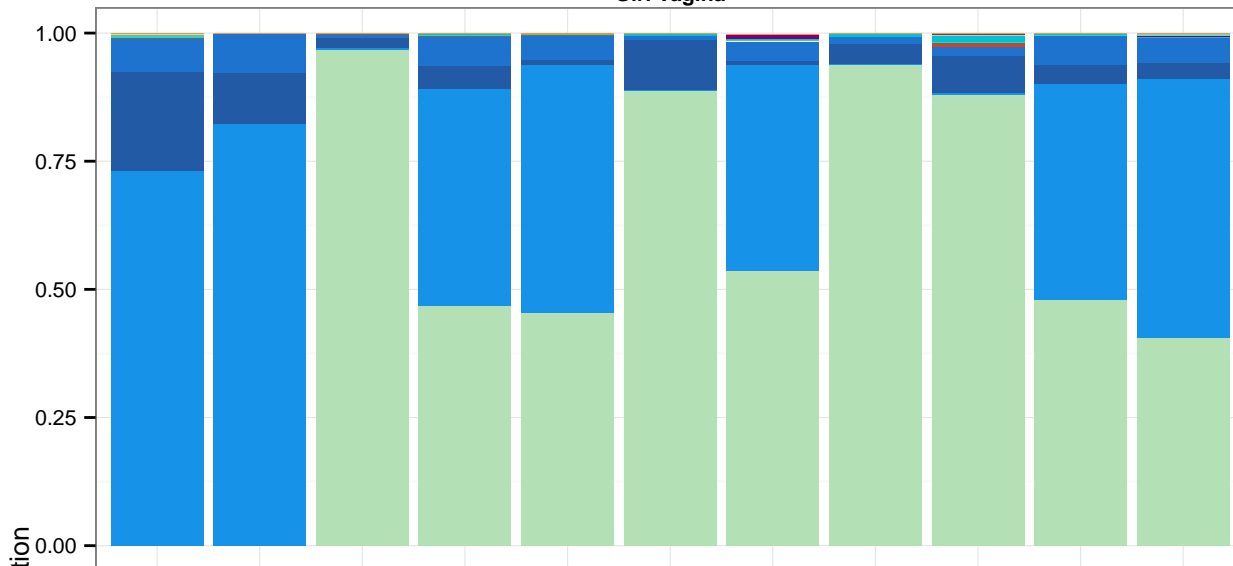


Mother Vagina

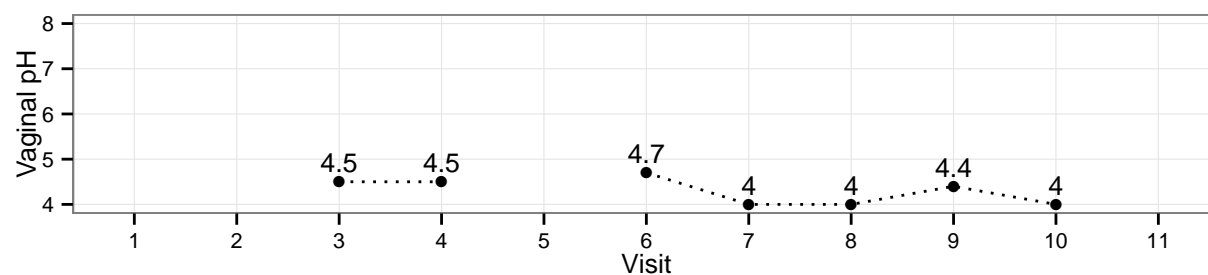
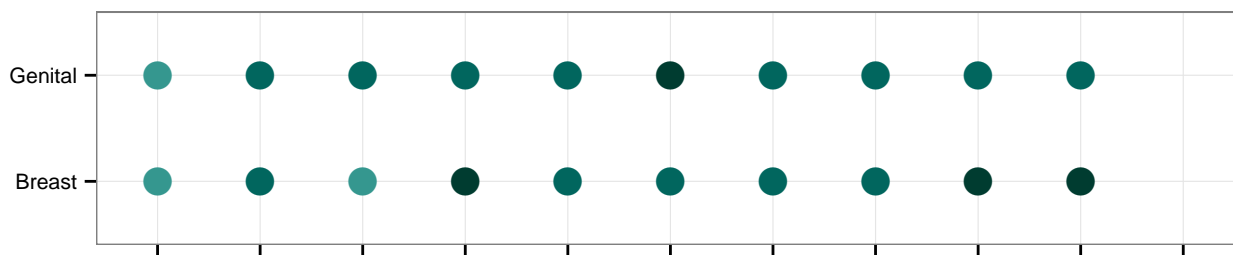
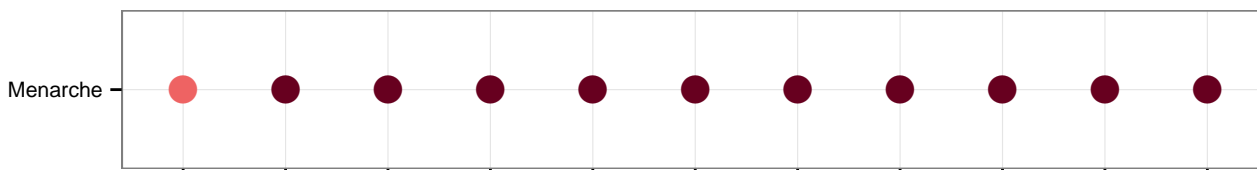
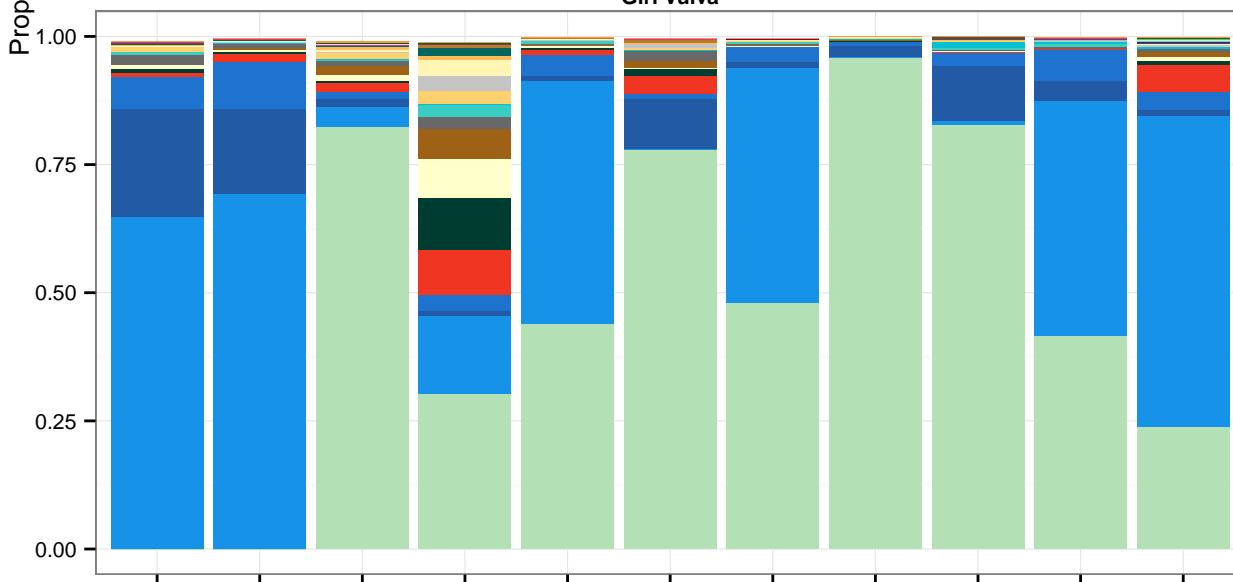


Subject 106: Black, non-Hispanic, 12.3 y/o at enrollment

Girl Vagina



Girl Vulva

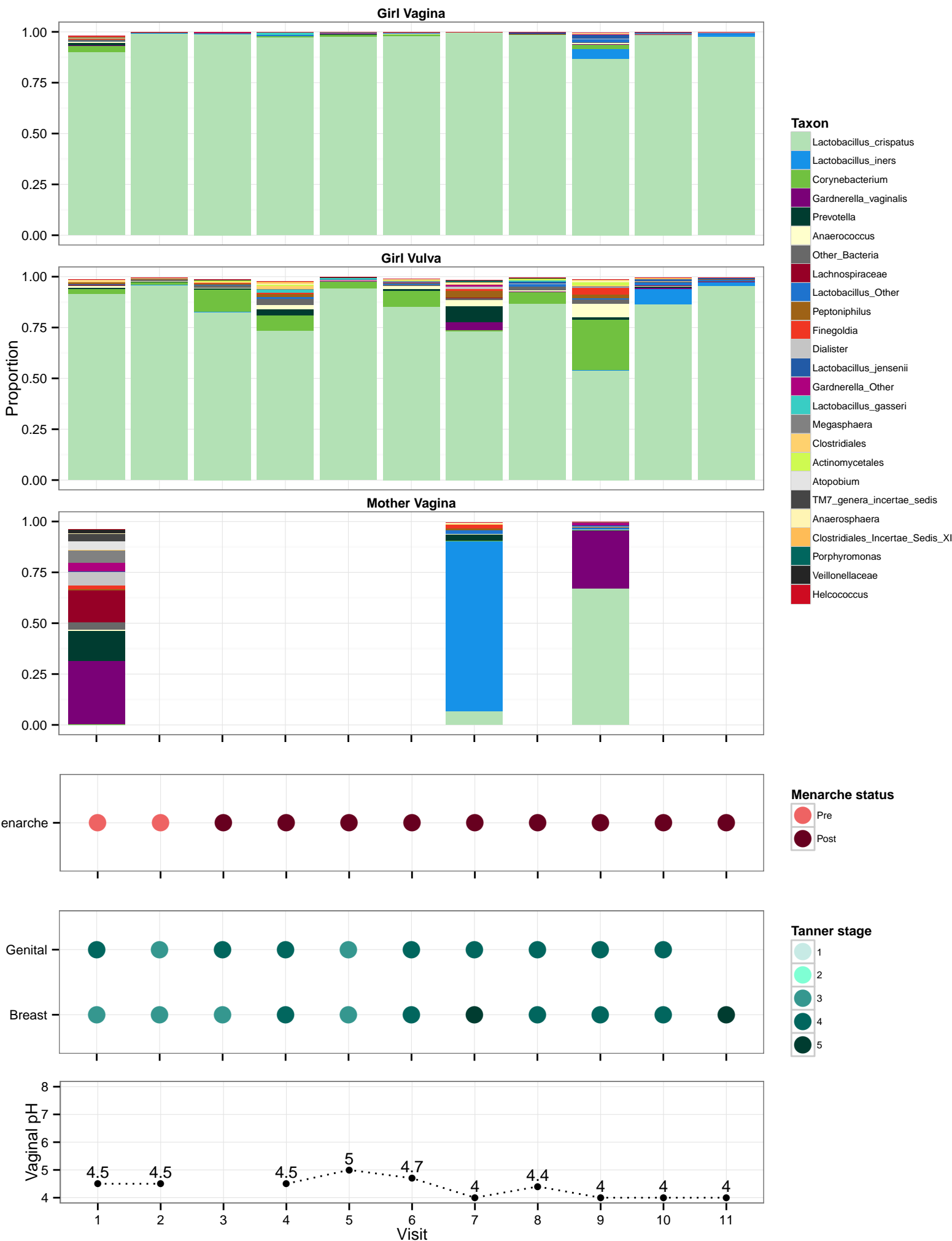


- Taxon**
- Lactobacillus_crispatus
 - Lactobacillus_iners
 - Lactobacillus_jensenii
 - Lactobacillus_Other
 - Finexgoldia
 - Prevotella
 - Anaerococcus
 - Peptoniphilus
 - Other_Bacteria
 - Lactobacillus_gasseri
 - Lactobacillus_gigeriorum
 - Clostridiales
 - Dialister
 - Anaerosphaera
 - Clostridiales_Incertae_Sedis_XI
 - Porphyromonas
 - Peptostreptococcus
 - Gardnerella_vaginalis
 - Lactobacillus_coleohominis
 - Staphylococcus
 - Bifidobacterium
 - Bacteroides
 - Corynebacterium
 - Segniliparus
 - Clostridium_XI

- Menarche status**
- Pre
 - Post

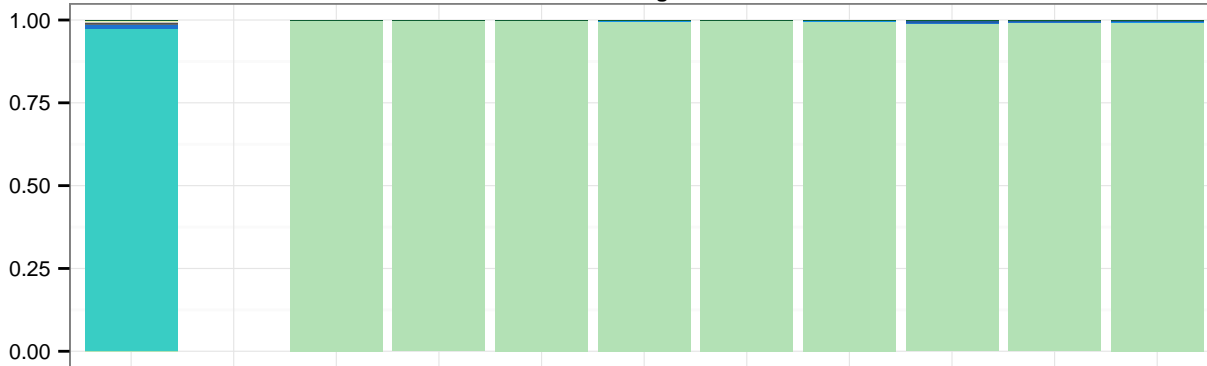
- Tanner stage**
- 1
 - 2
 - 3
 - 4
 - 5

Subject 107: Black, non-Hispanic, 12.4 y/o at enrollment

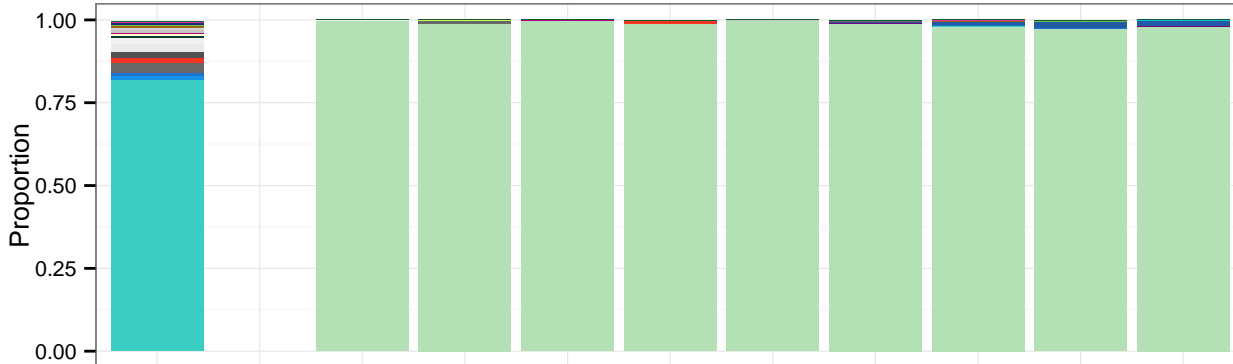


Subject 108: Black, non-Hispanic, 11.5 y/o at enrollment

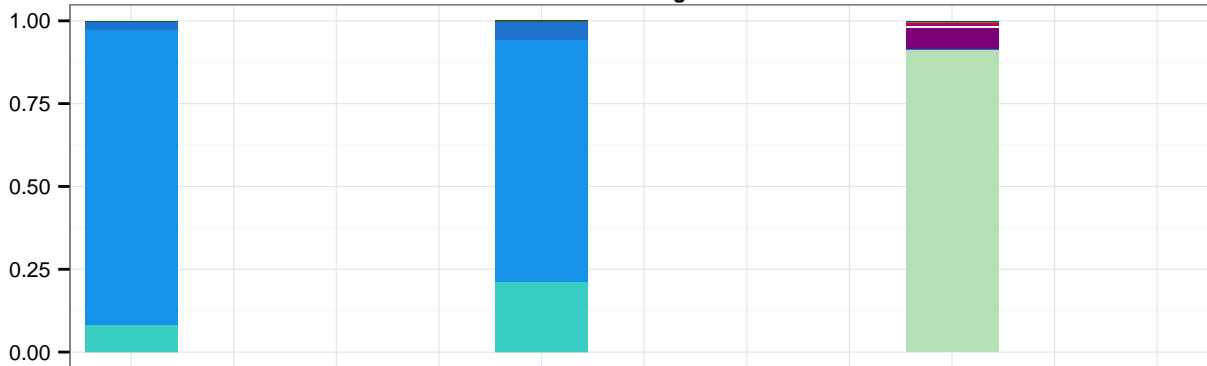
Girl Vagina



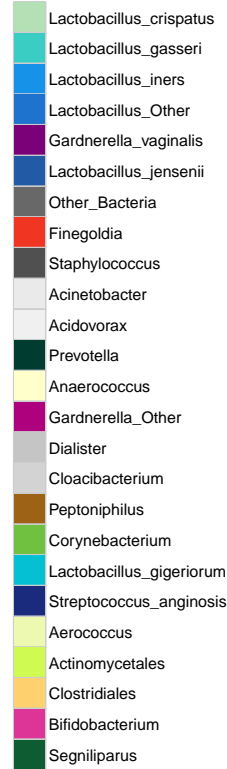
Girl Vulva



Mother Vagina



Taxon



Menarche

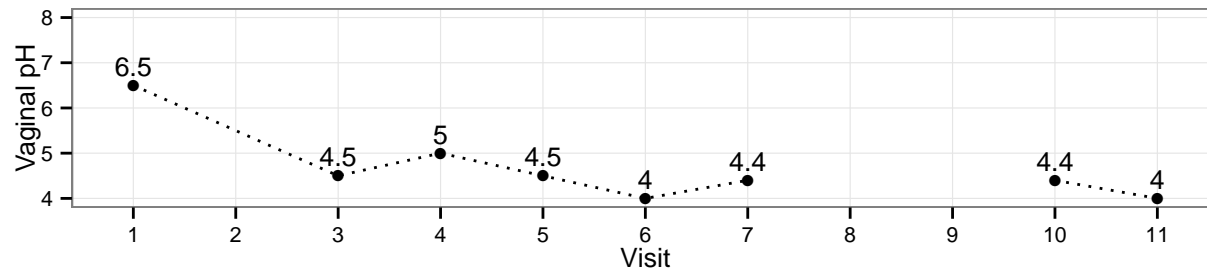
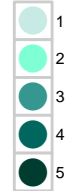
Menarche status



Genital

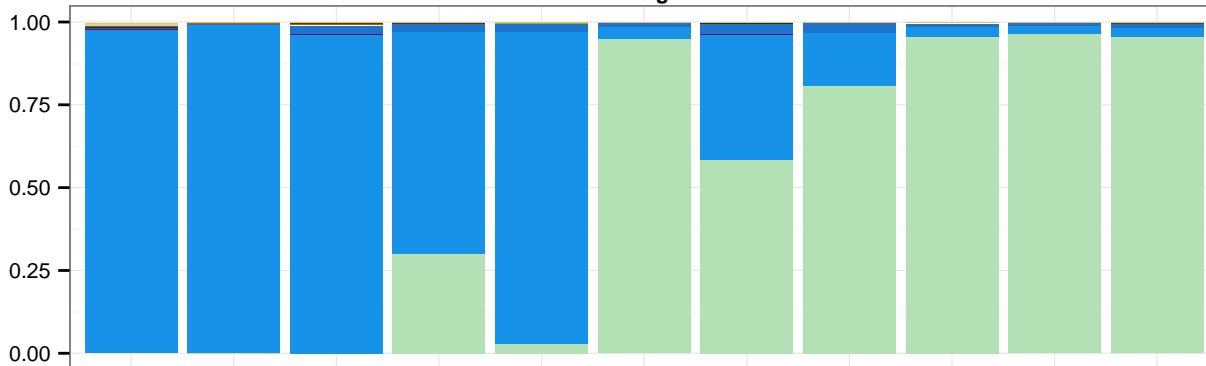
Breast

Tanner stage

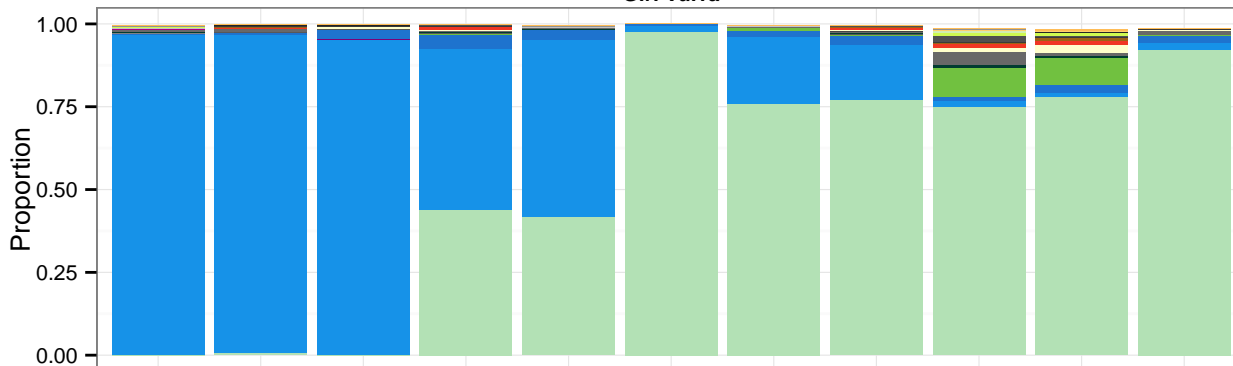


Subject 109: Black, non-Hispanic, 10.6 y/o at enrollment

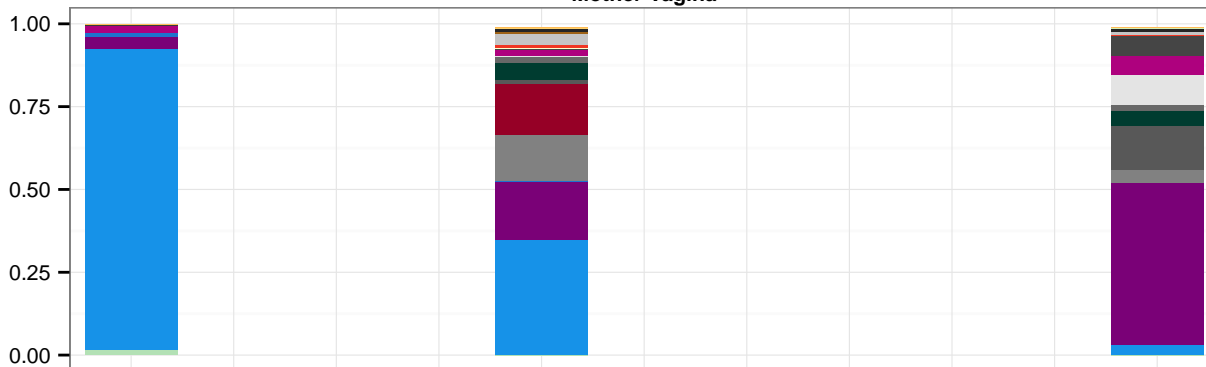
Girl Vagina



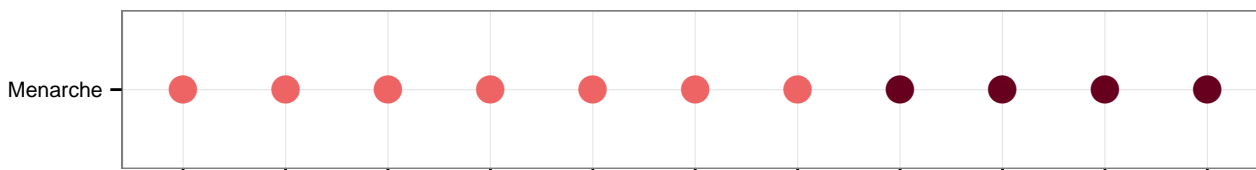
Girl Vulva



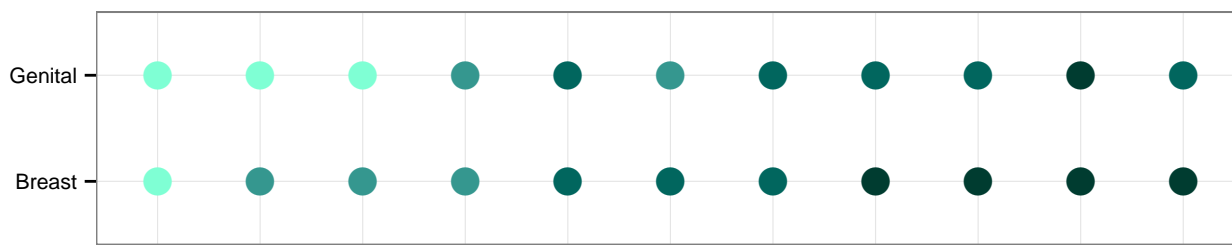
Mother Vagina



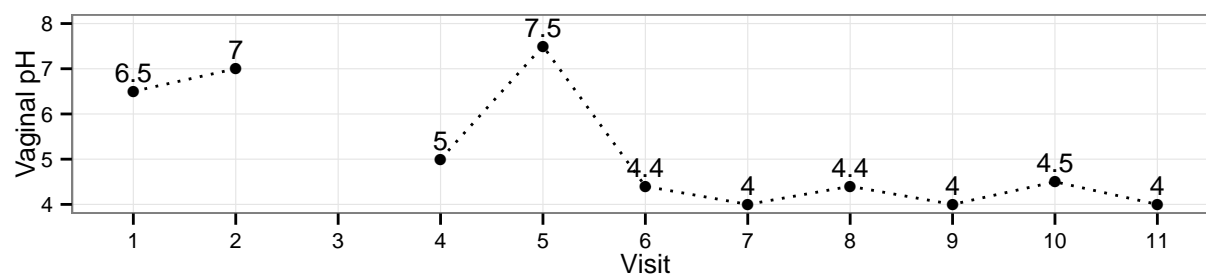
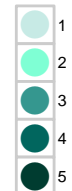
Taxon



Menarche status

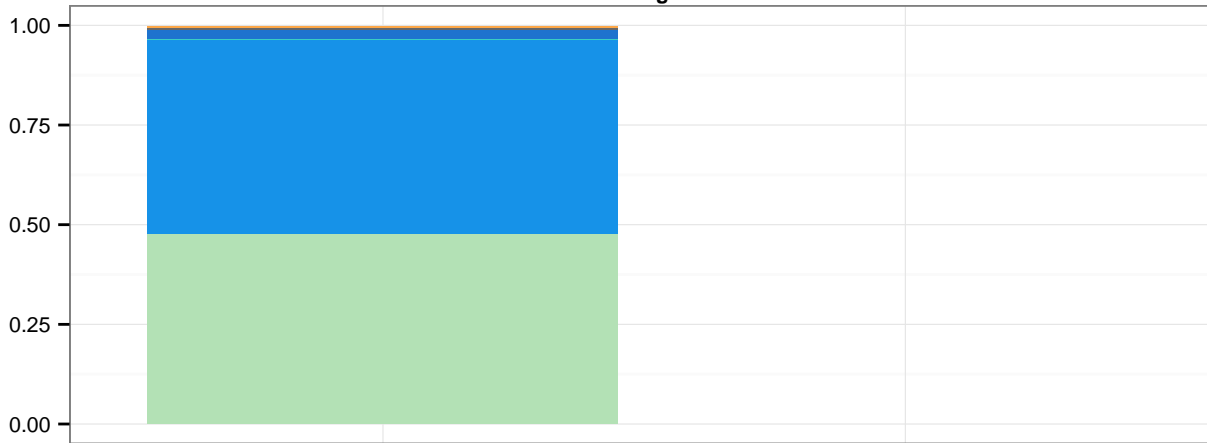


Tanner stage

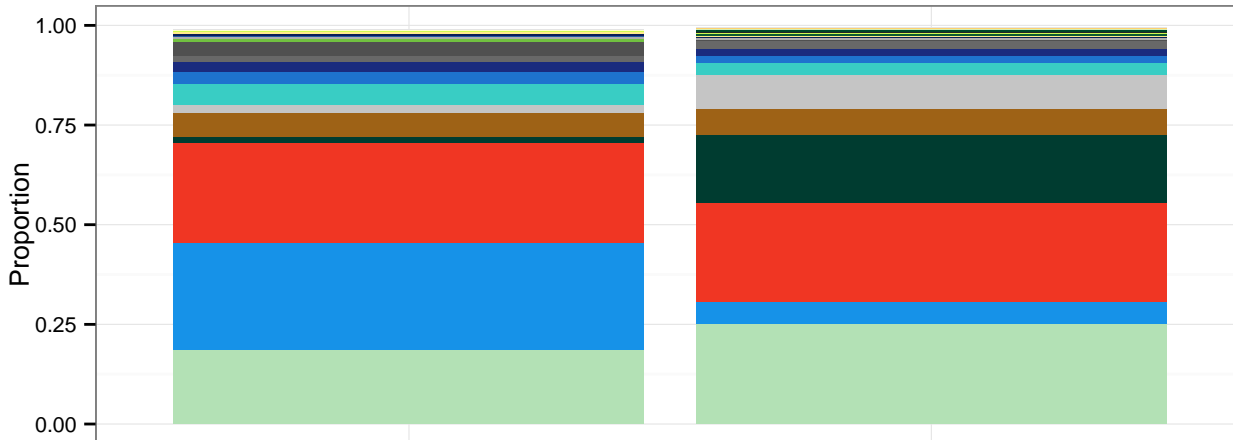


Subject 110: Black, non-Hispanic, 10.1 y/o at enrollment

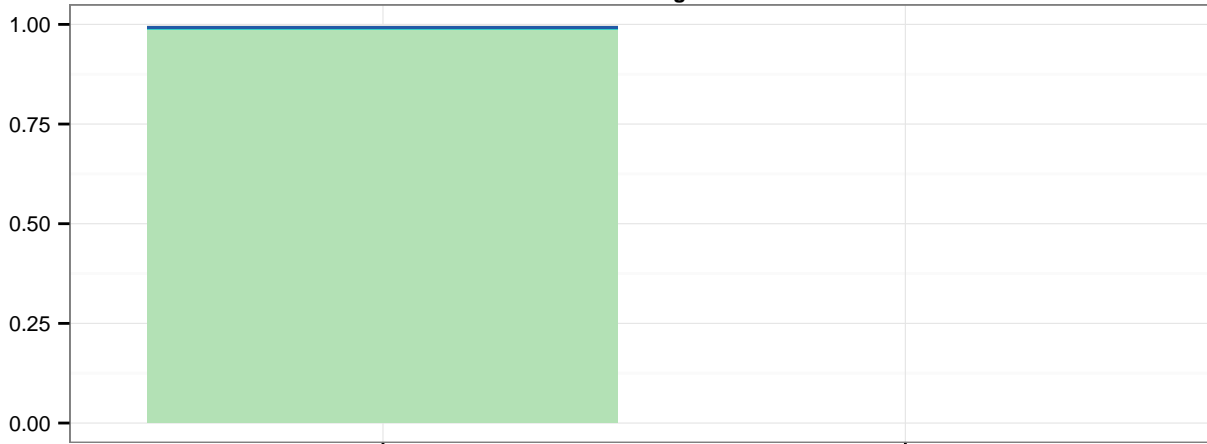
Girl Vagina



Girl Vulva



Mother Vagina



Taxon

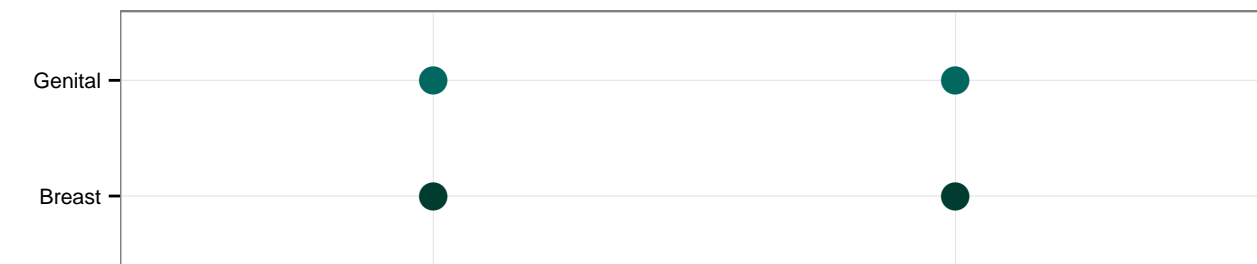
- Lactobacillus_crispatus
- Lactobacillus_iners
- Finegoldia
- Prevotella
- Peptoniphilus
- Dialister
- Lactobacillus_gasseri
- Lactobacillus_Other
- Streptococcus_anginosus
- Other_Bacteria
- Staphylococcus
- Corynebacterium
- Fusobacterium
- Lactobacillus_jensenii
- Streptococcus_Other
- Clostridium_sensu_stricto
- Actinobaculum
- Segniliparus
- Actinomycetales
- Veillonellaceae
- Varibaculum
- Anaerococcus
- Facklamia
- Clostridiales
- Atopobium

Menarche status

- Pre
- Post

Tanner stage

- 1
- 2
- 3
- 4
- 5

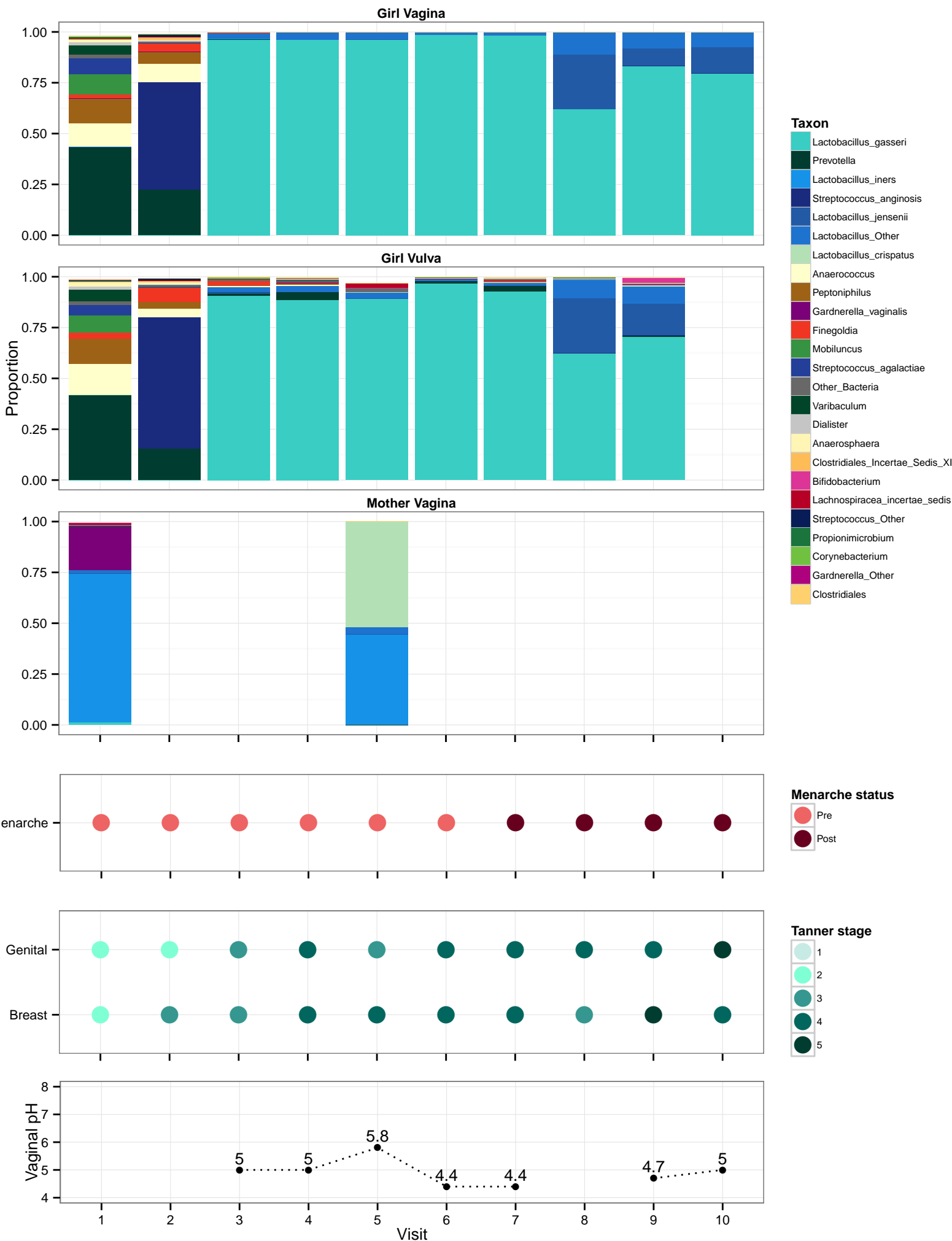


1

2

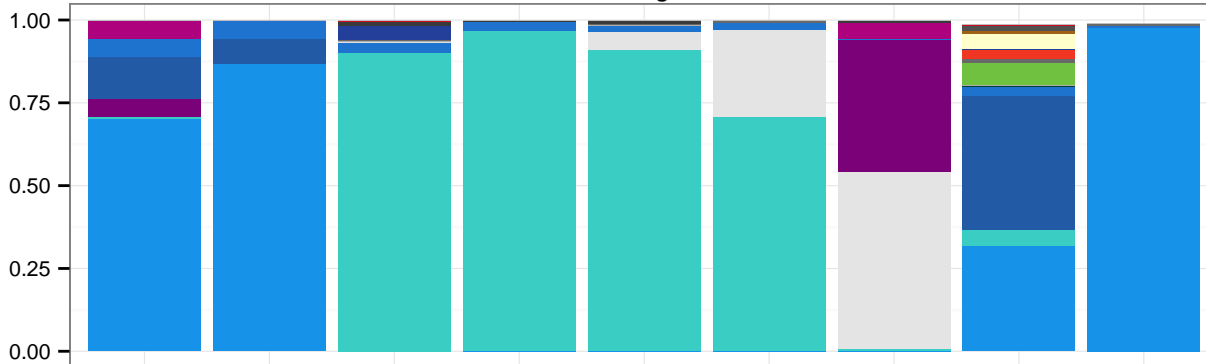
Visit

Subject 111: Black, non-Hispanic, 10.4 y/o at enrollment

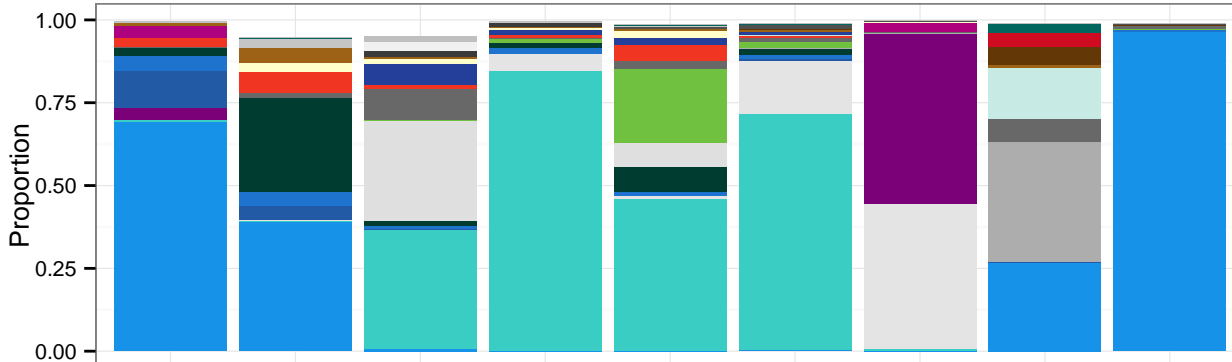


Subject 112: Black, non-Hispanic, 10.1 y/o at enrollment

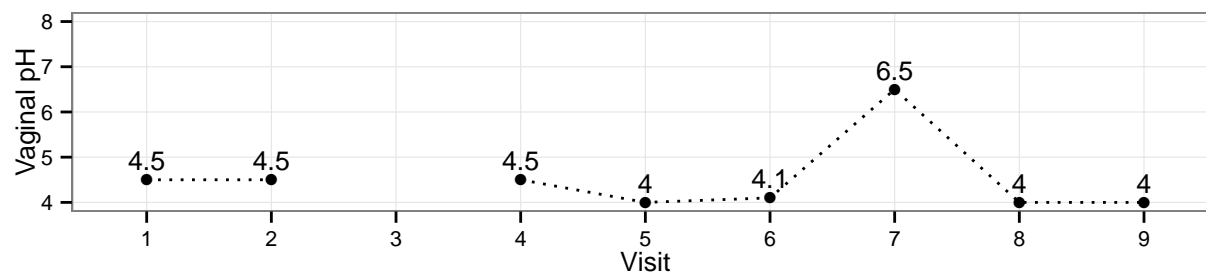
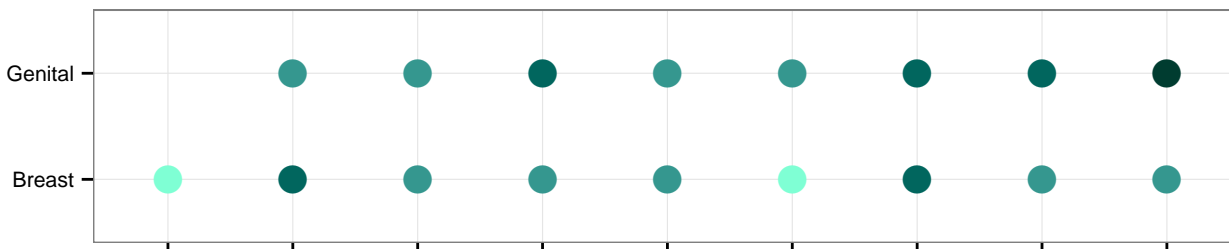
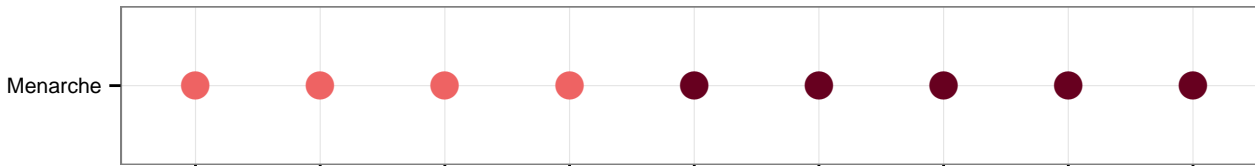
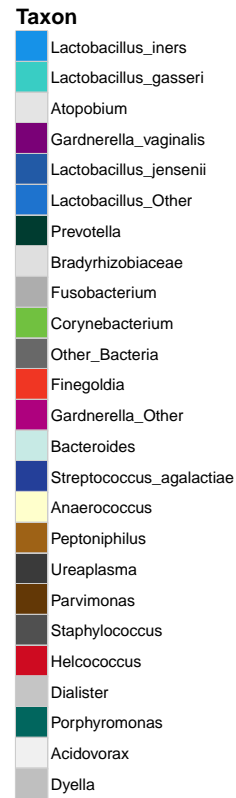
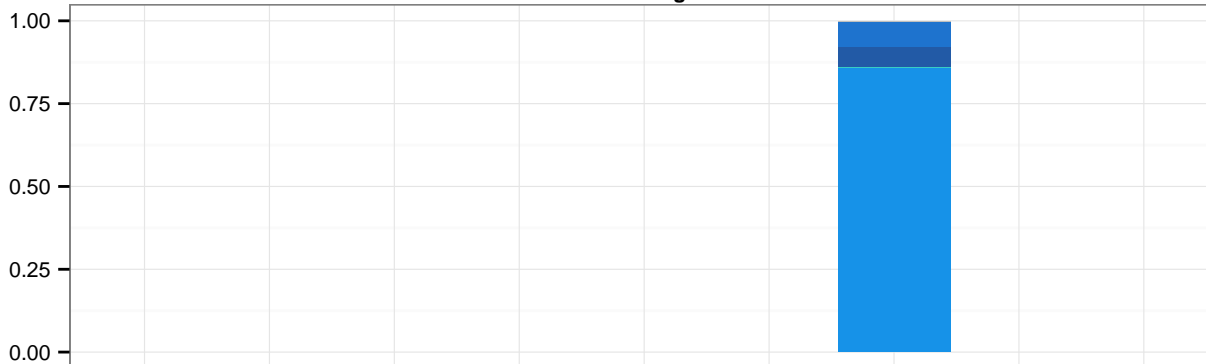
Girl Vagina



Girl Vulva

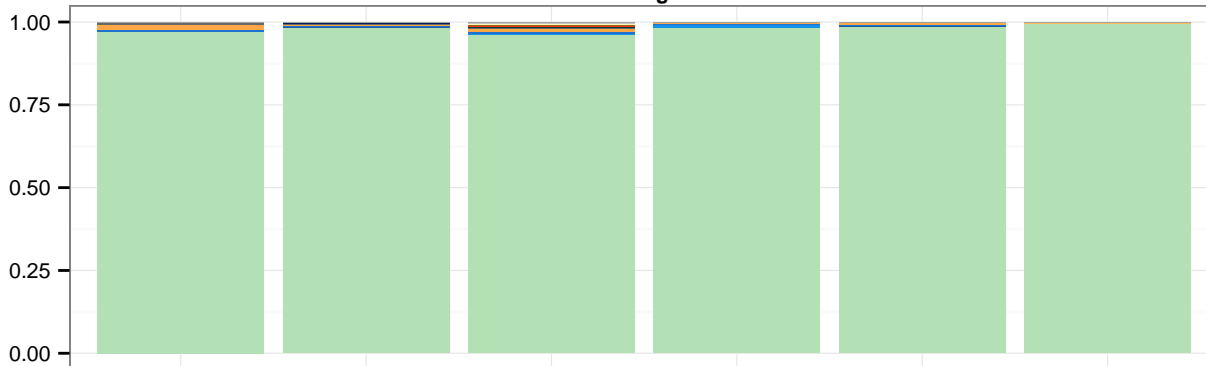


Mother Vagina

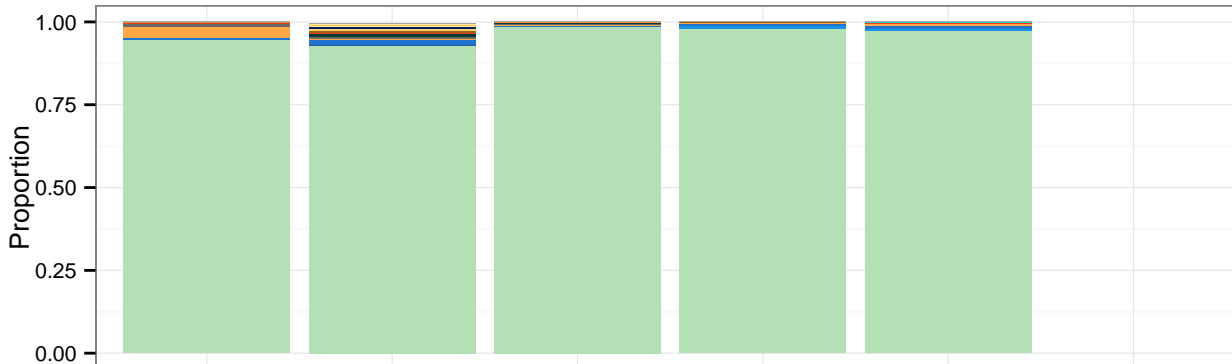


Subject 113: Black, non-Hispanic, 11.6 y/o at enrollment

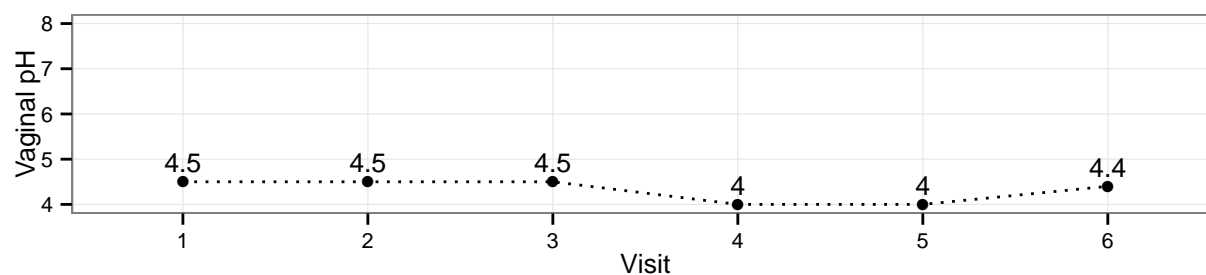
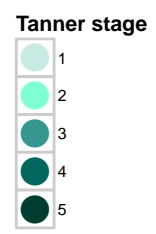
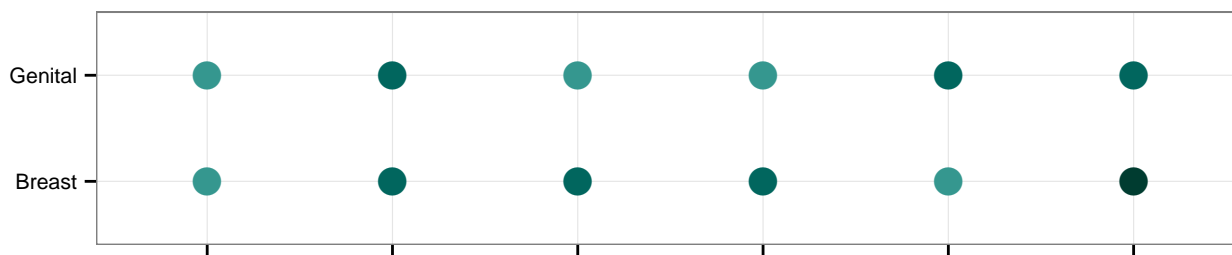
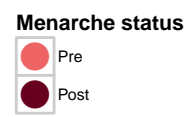
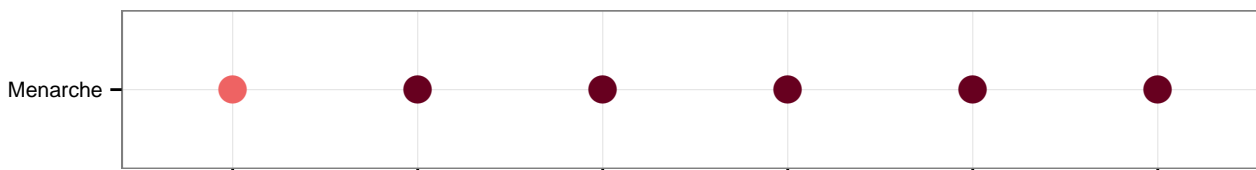
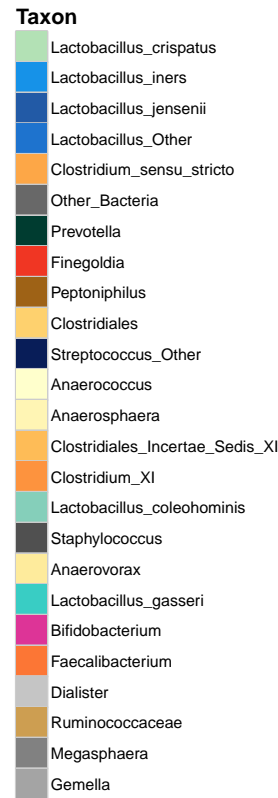
Girl Vagina



Girl Vulva

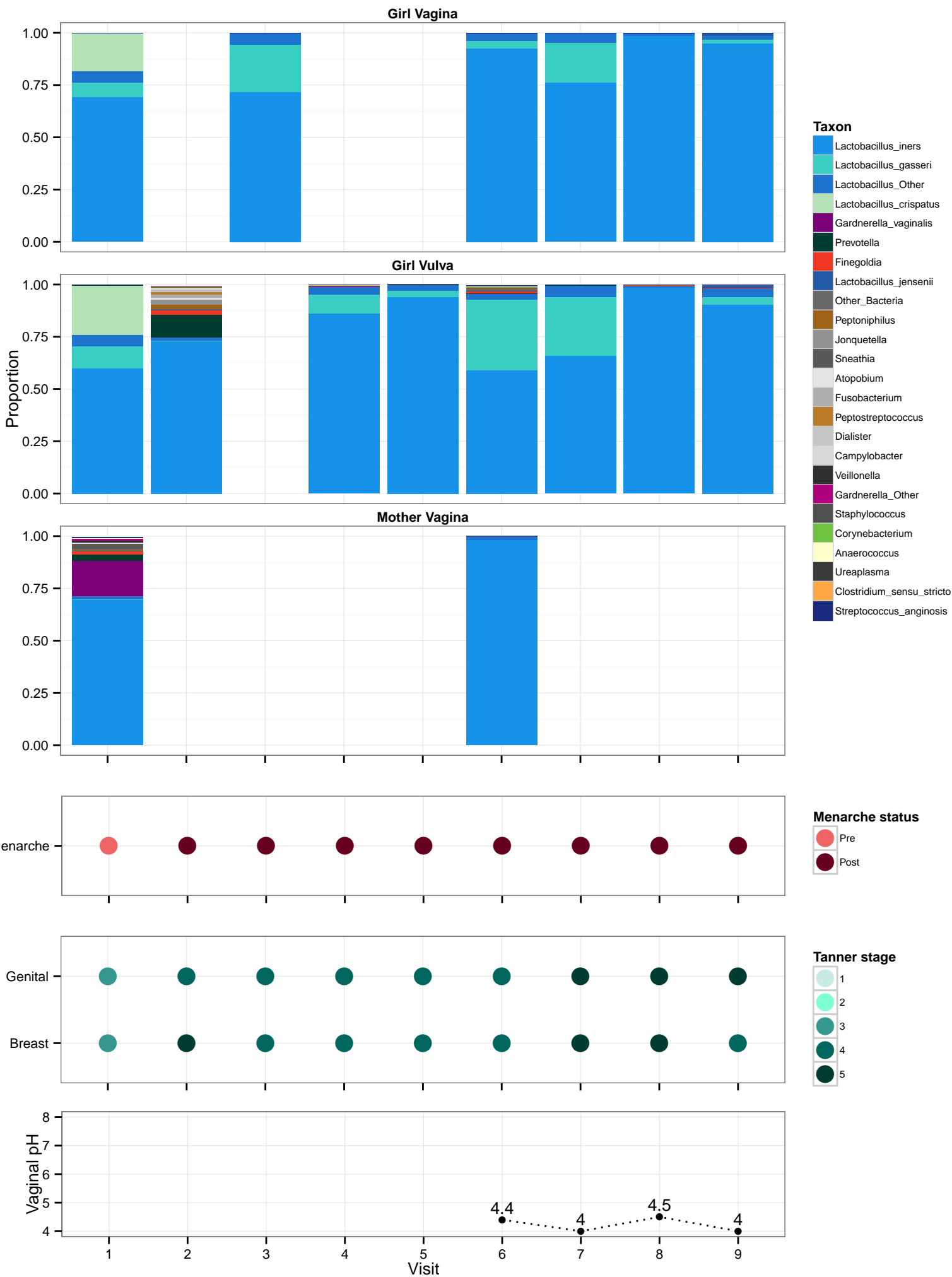


Mother Vagina



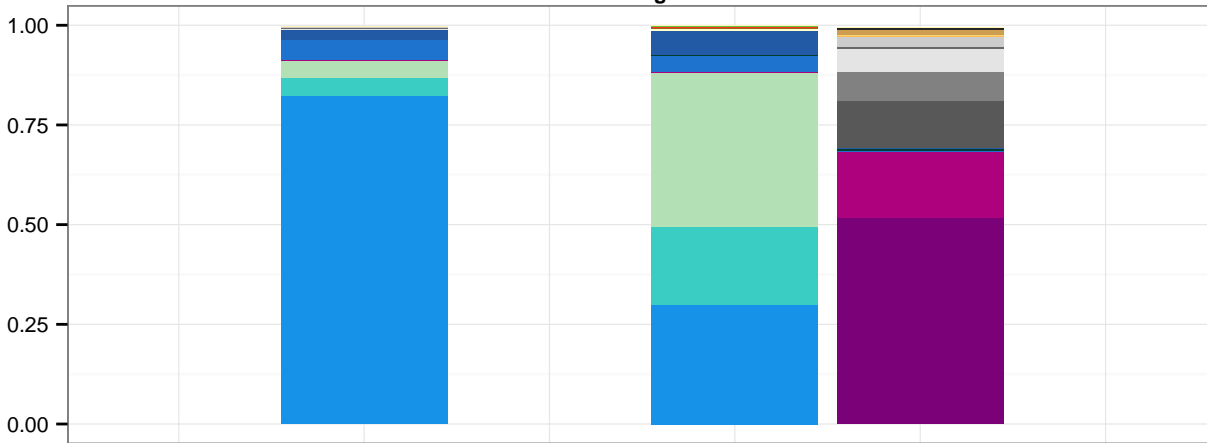
Visit

Subject 114: Black, non-Hispanic, 11 y/o at enrollment

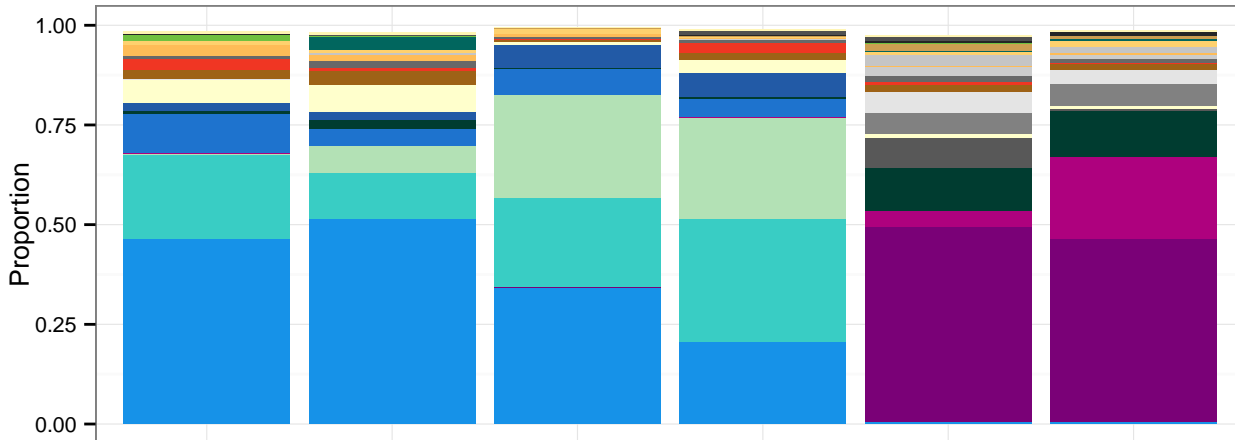


Subject 115: Caucasian, non-Hispanic, 11 y/o at enrollment

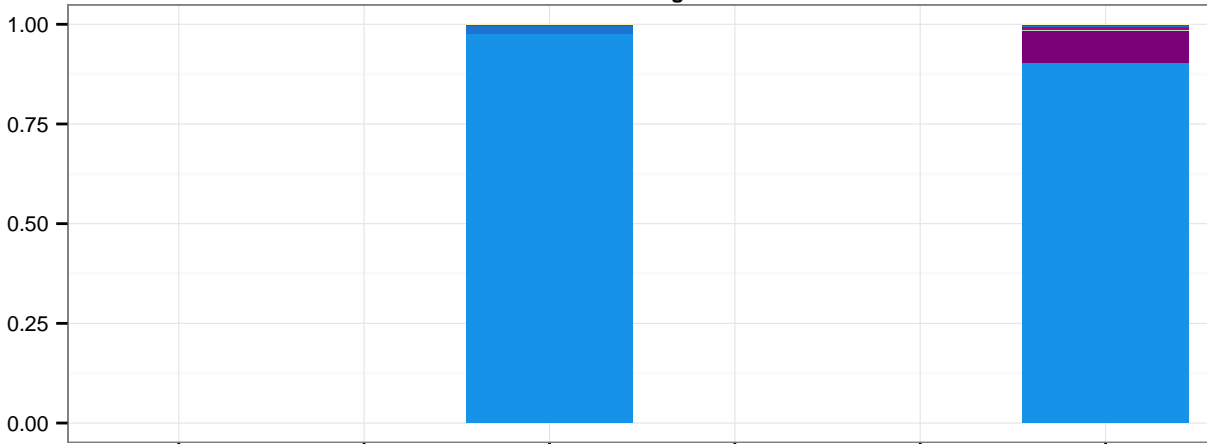
Girl Vagina



Girl Vulva



Mother Vagina



Menarche

Menarche status



Genital

Tanner stage

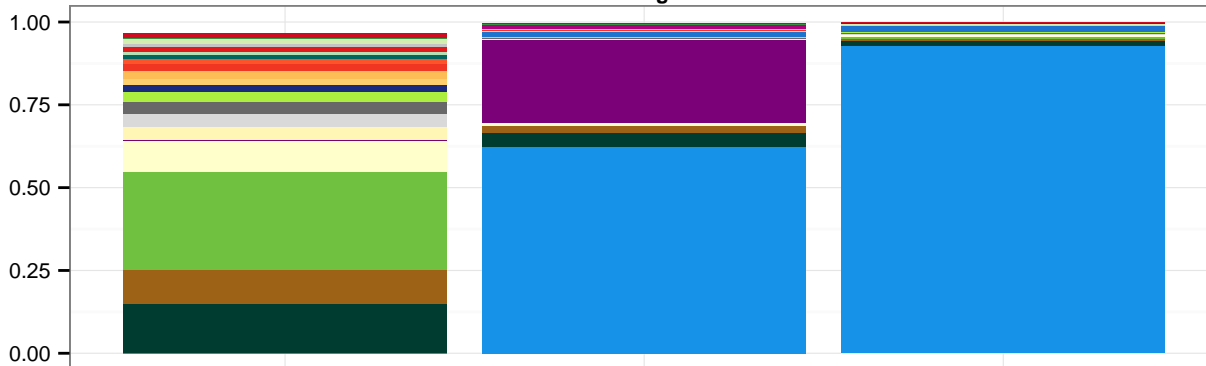


Breast

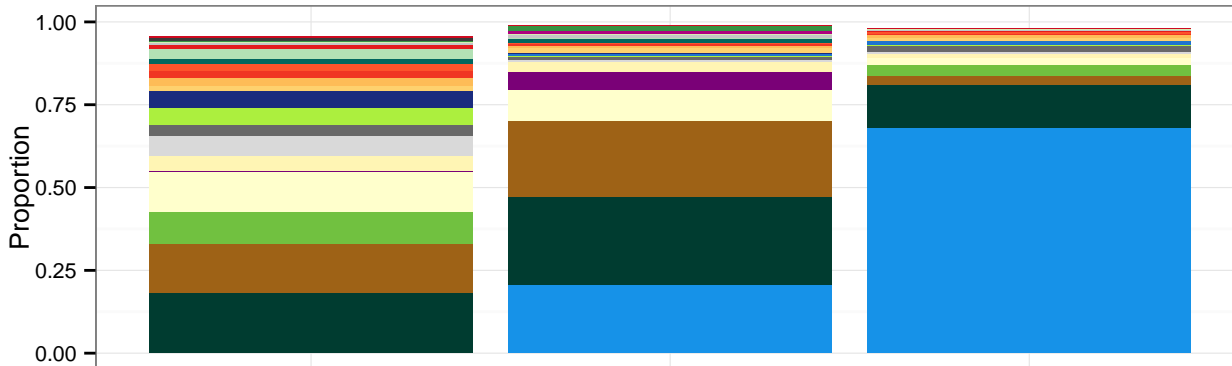
1 2 3 4 5 6 Visit

Subject 116: Black, non-Hispanic, 11.2 y/o at enrollment

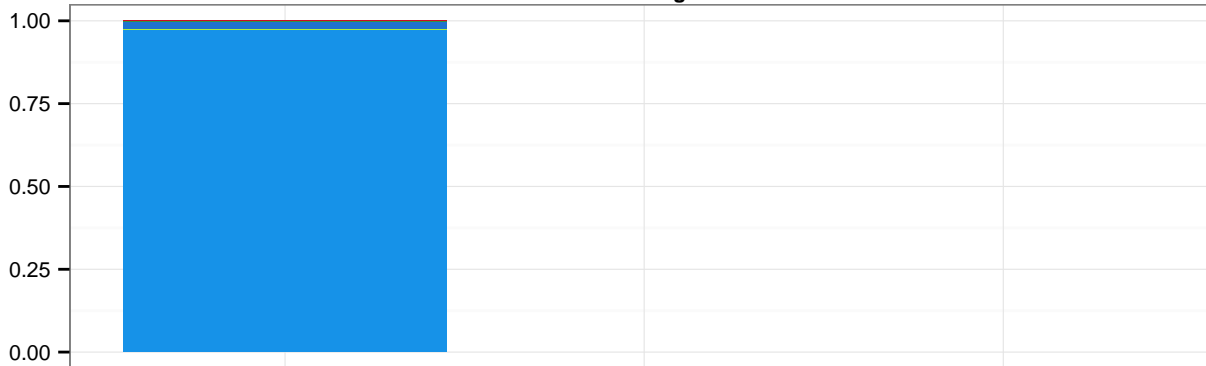
Girl Vagina



Girl Vulva



Mother Vagina



Taxon

- Lactobacillus_iners
- Prevootella
- Peptoniphilus
- Corynebacterium
- Anaerococcus
- Gardnerella_vaginalis
- Anaerosphaera
- Campylobacter
- Other_Bacteria
- Arcanobacterium
- Lactobacillus_Other
- Streptococcus_anginosis
- Clostridiales
- Clostridiales_Incertae_Sedis_XI
- Finegoldia
- Fastidiosipila
- Porphyromonas
- Lactobacillus_crispatus
- Gallicola
- Dialister
- Facklamia
- Gardnerella_Other
- Mobiluncus
- Ureaplasma
- Helcococcus

Menarche

Menarche status

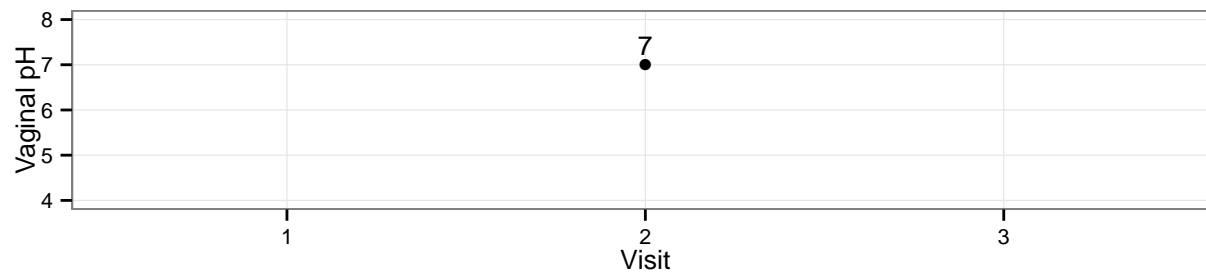
- Pre
- Post

Genital

Tanner stage

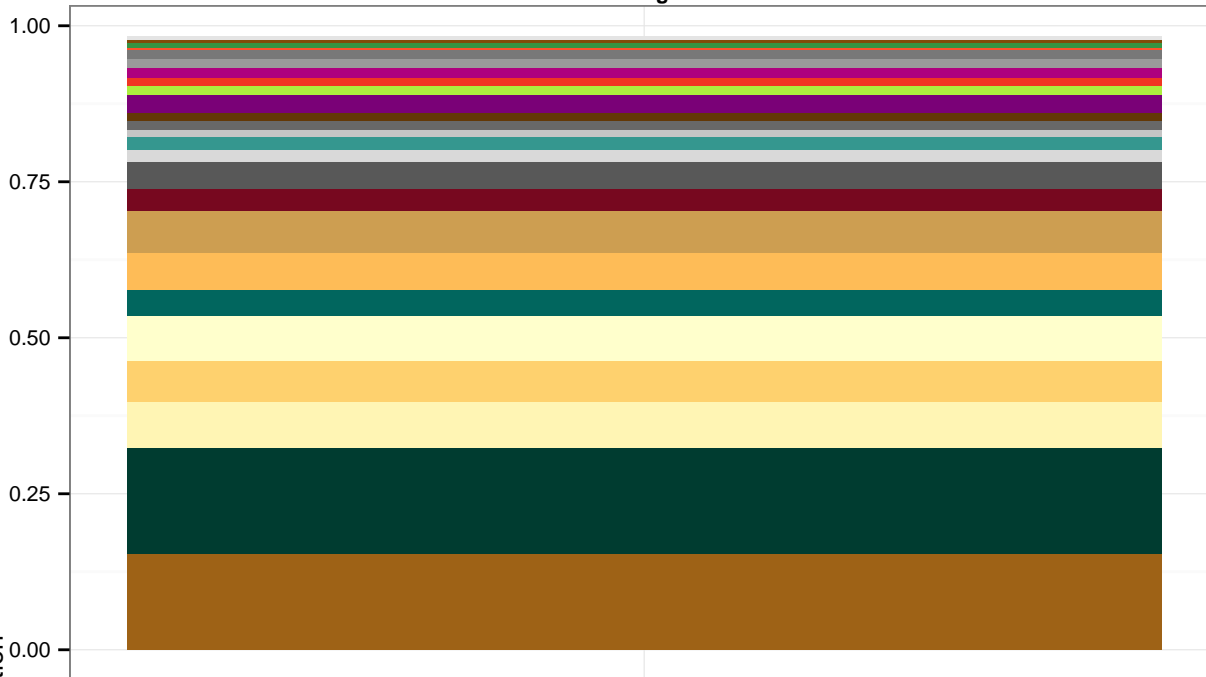
- 1
- 2
- 3
- 4
- 5

Breast



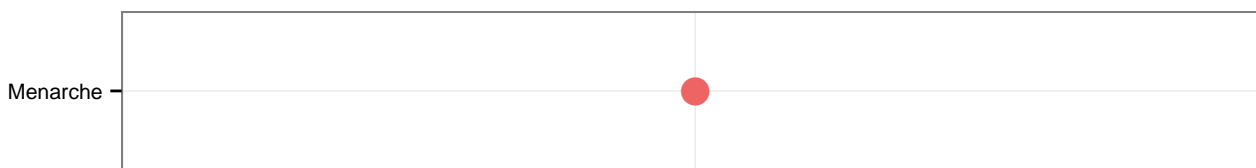
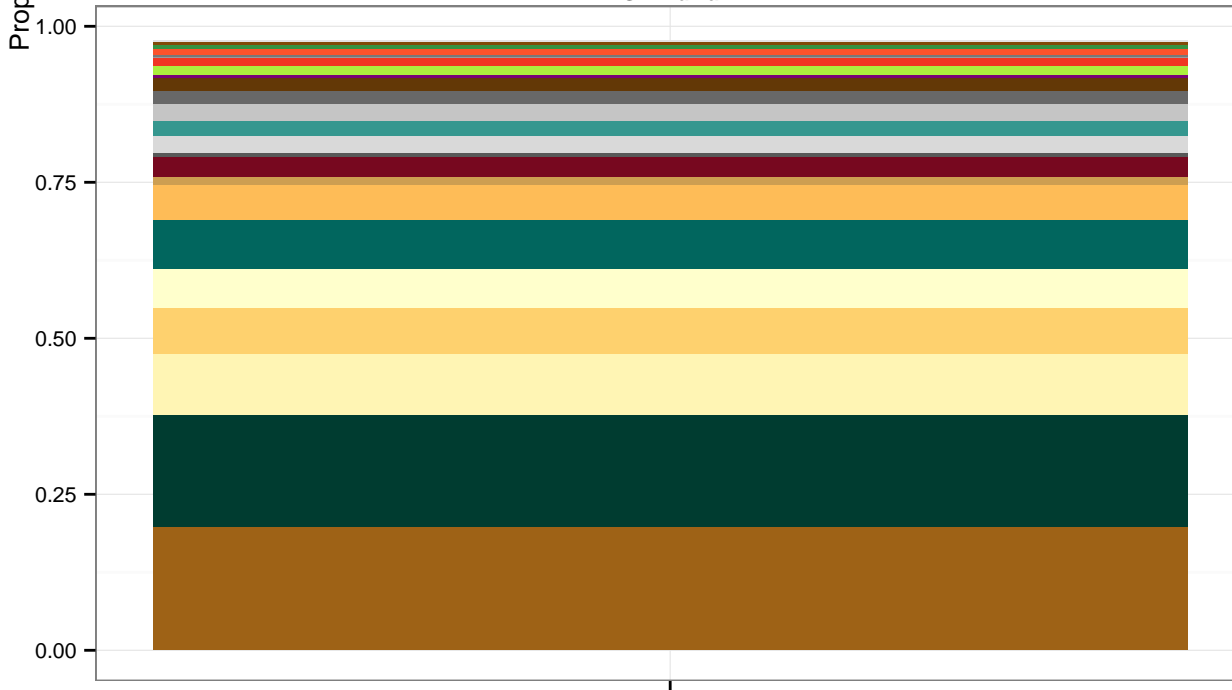
Subject 118: Caucasian, non-Hispanic, 11.3 y/o at enrollment

Girl Vagina

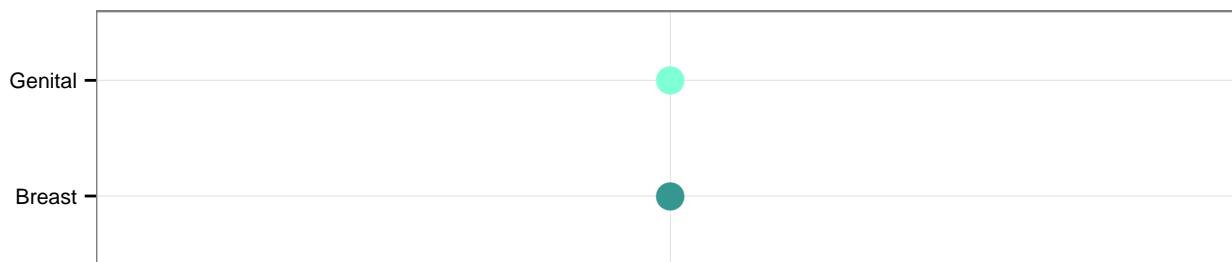


- Taxon**
- Peptoniphilus
 - Prevotella
 - Anaerospaera
 - Clostridiales
 - Anaerococcus
 - Porphyromonas
 - Clostridiales_Incertae_Sedis_XI
 - Ruminococcaceae
 - Moryella
 - Sneathia
 - Campylobacter
 - Porphyromonadaceae
 - Dialister
 - Other_Bacteria
 - Parvimonas
 - Gardnerella_vaginalis
 - Arcanobacterium
 - Finegoldia
 - Gardnerella_Other
 - Gordonibacter
 - Mycoplasma
 - Fastidiosipila
 - Mobiluncus
 - Peptococcus
 - Atopobium

Girl Vulva



- Menarche status**
- Pre
 - Post

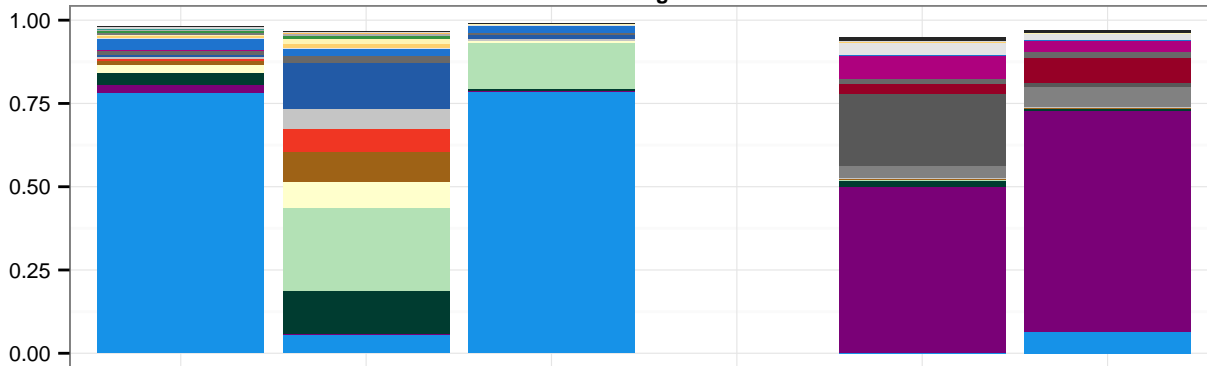


- Tanner stage**
- 1
 - 2
 - 3
 - 4
 - 5

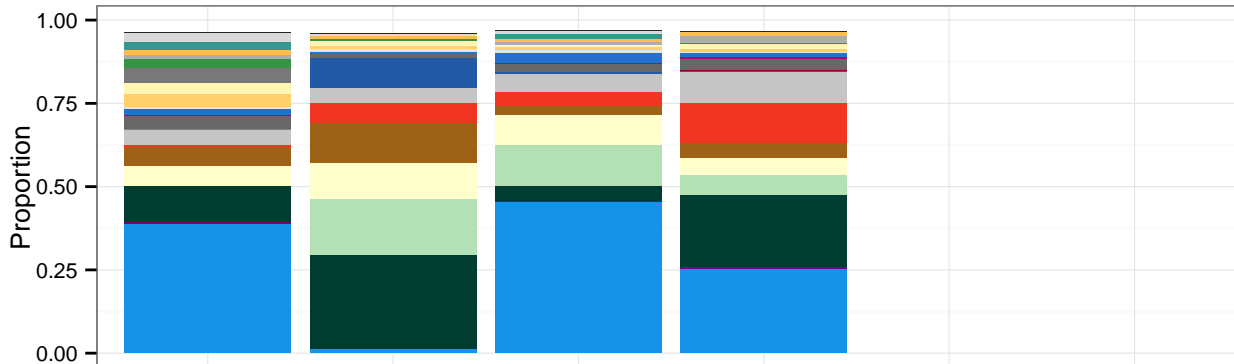
1 Visit

Subject 120: Black, non-Hispanic, 12 y/o at enrollment

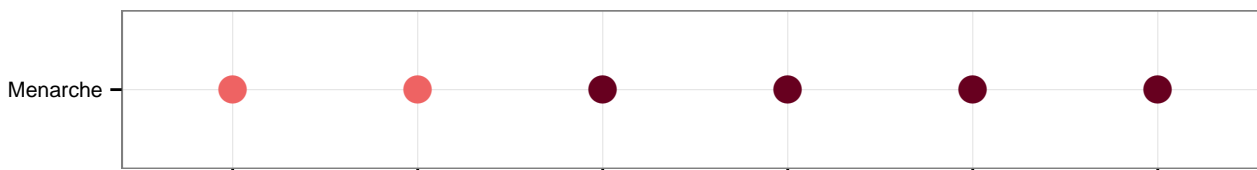
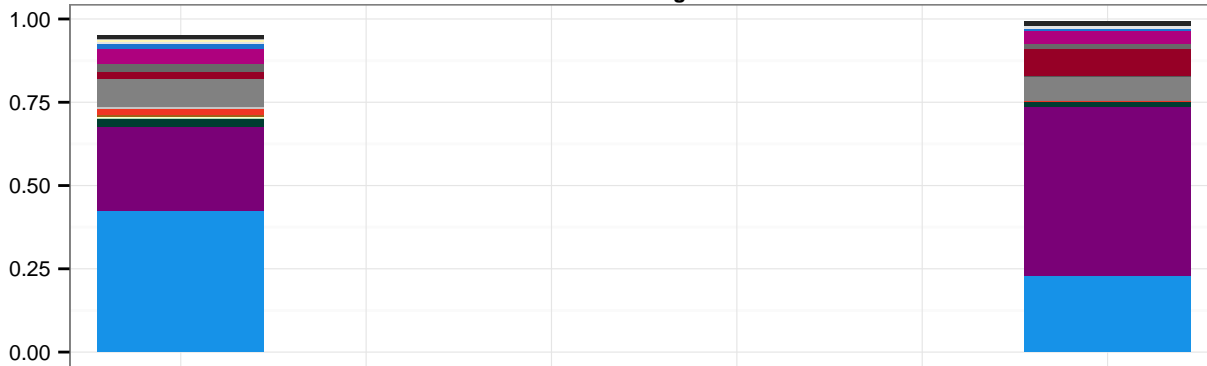
Girl Vagina



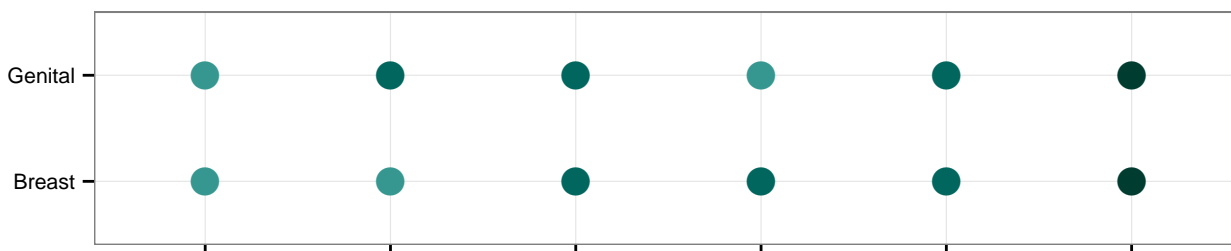
Girl Vulva



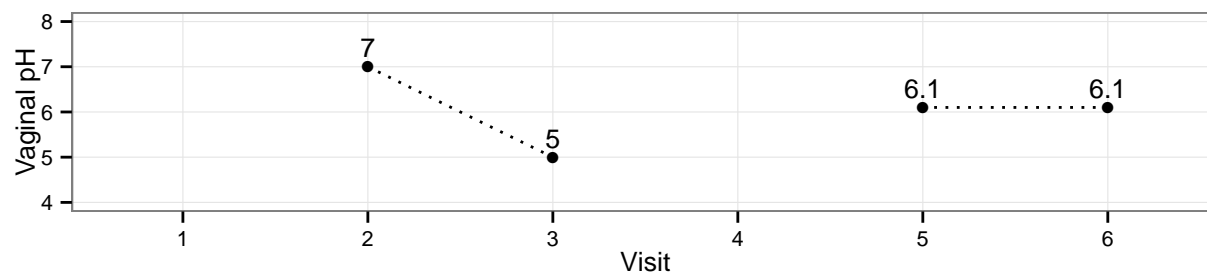
Mother Vagina



Menarche status



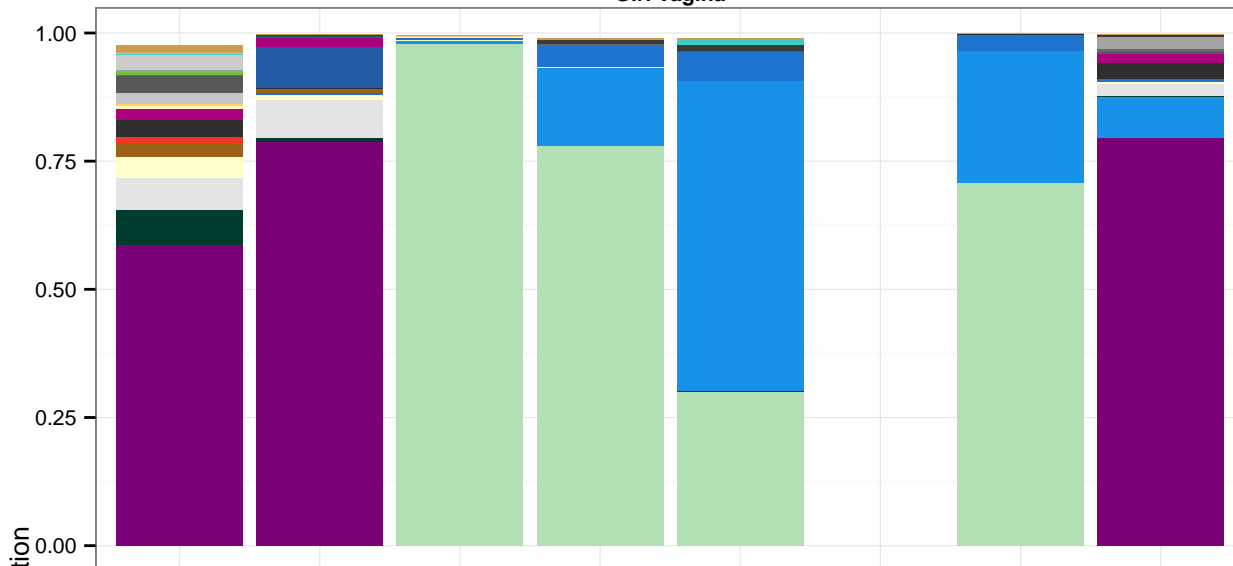
Tanner stage



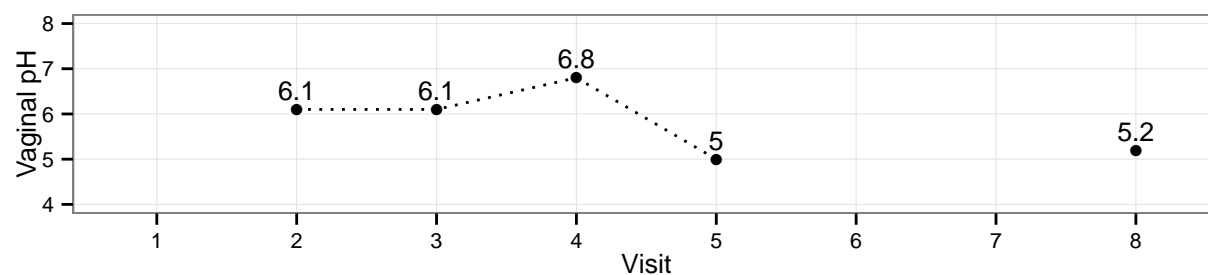
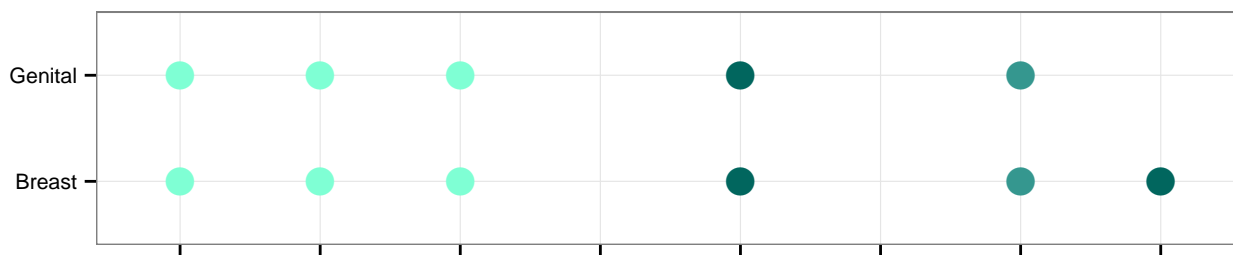
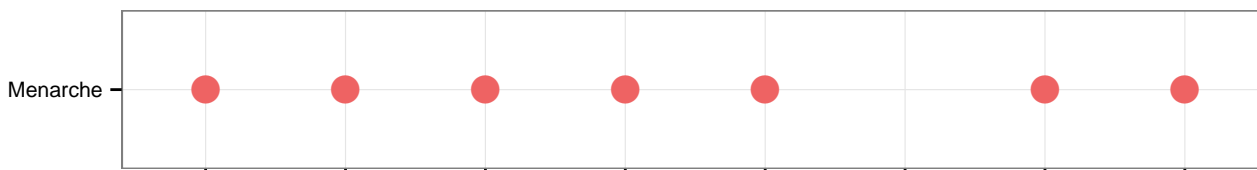
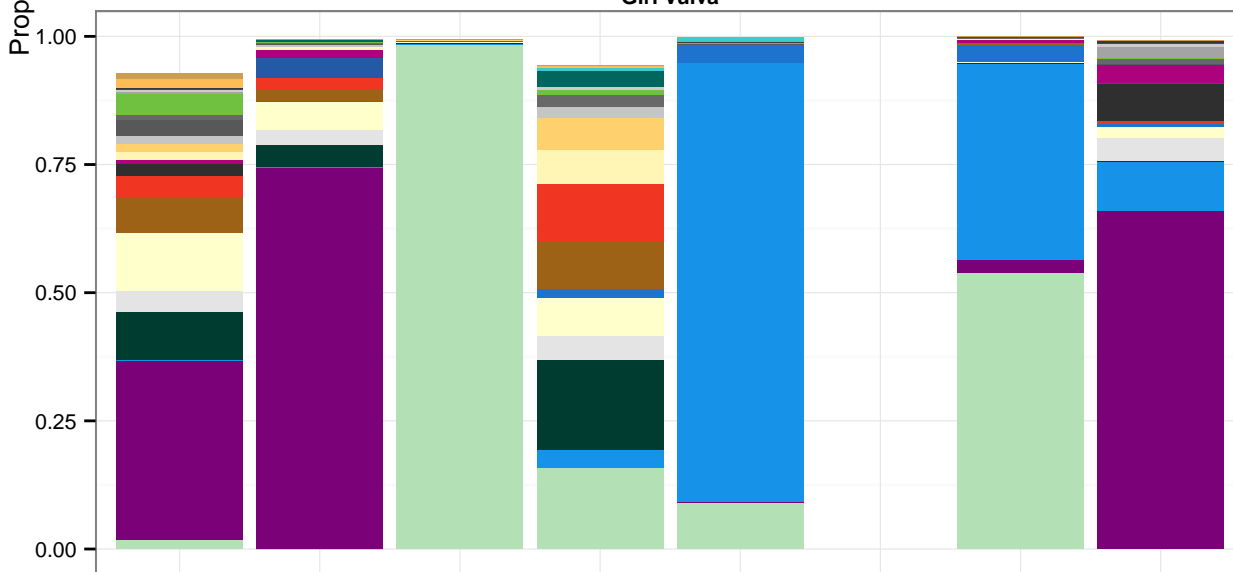
Visit

Subject 121: Black, non-Hispanic, 10.1 y/o at enrollment

Girl Vagina



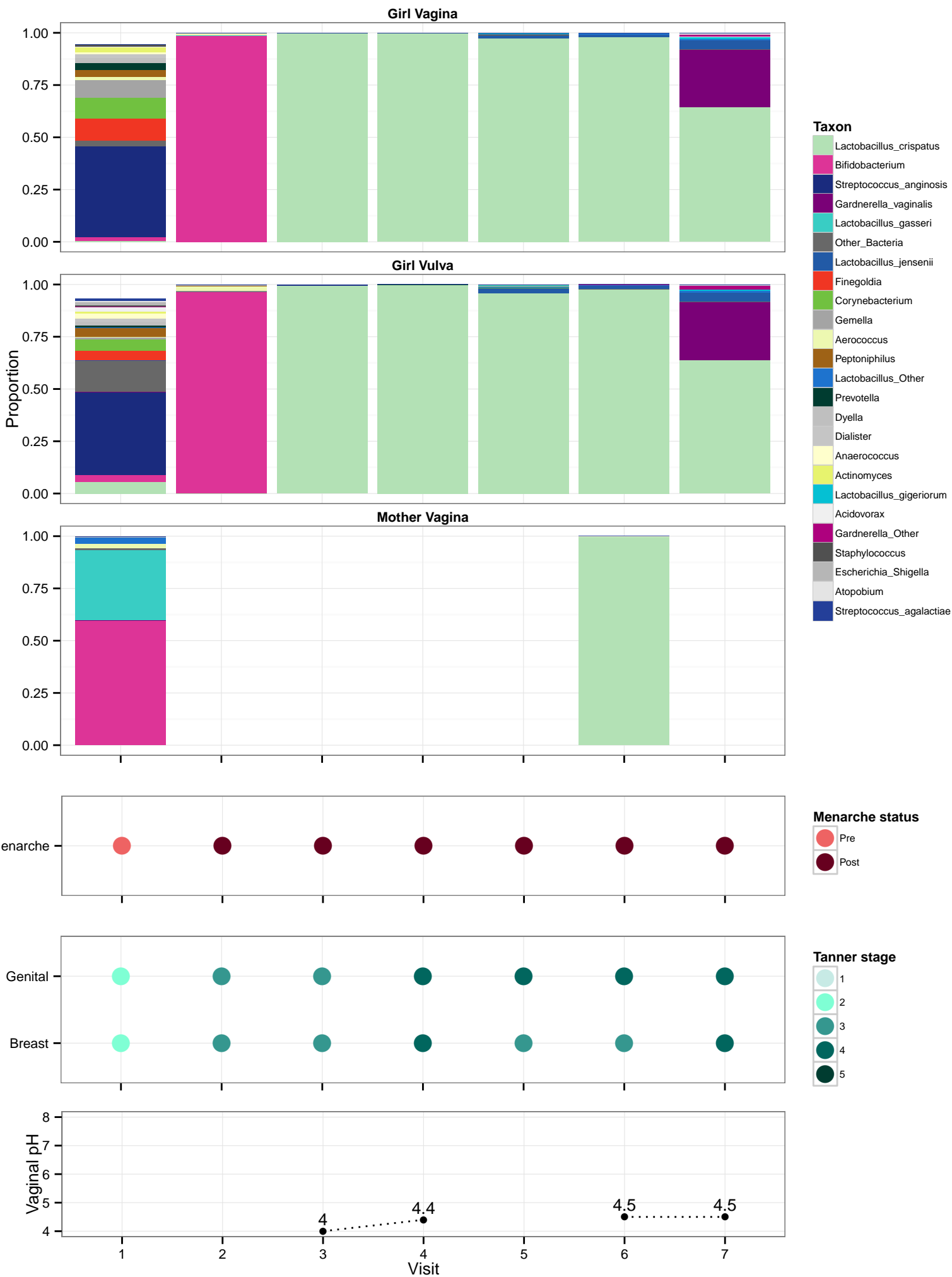
Girl Vulva



Subject 123: Black, non-Hispanic, 10.1 y/o at enrollment

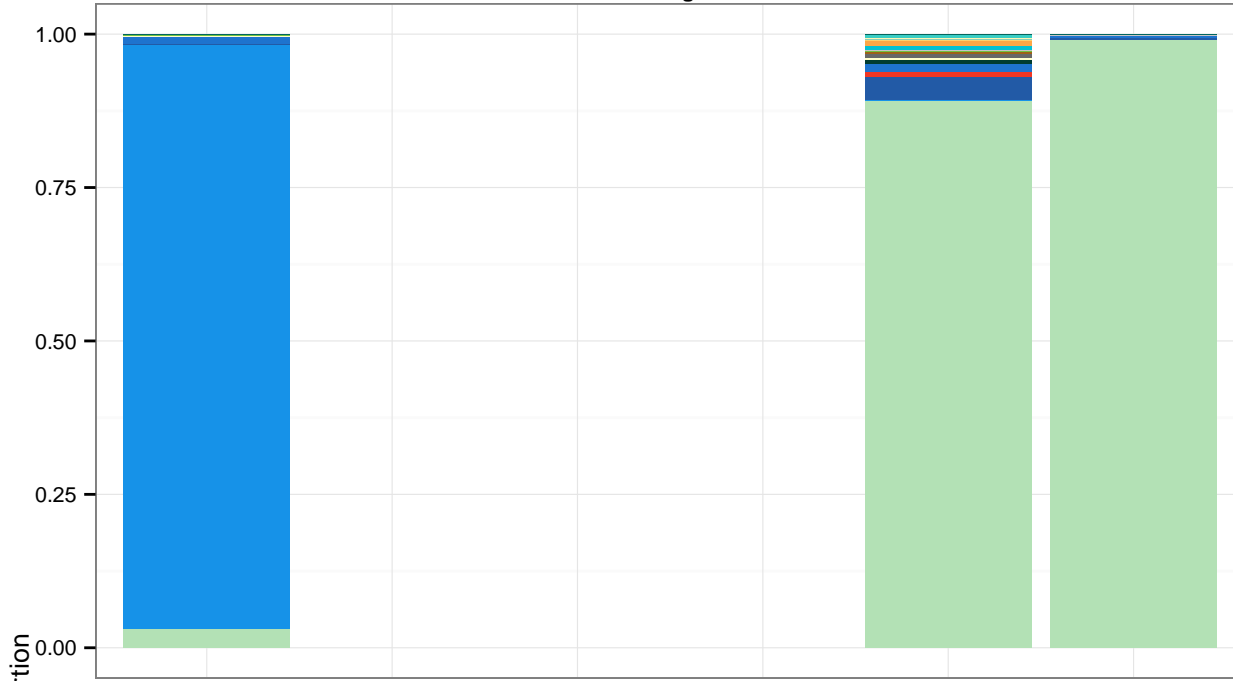


Subject 124: Black, non-Hispanic, 10.1 y/o at enrollment

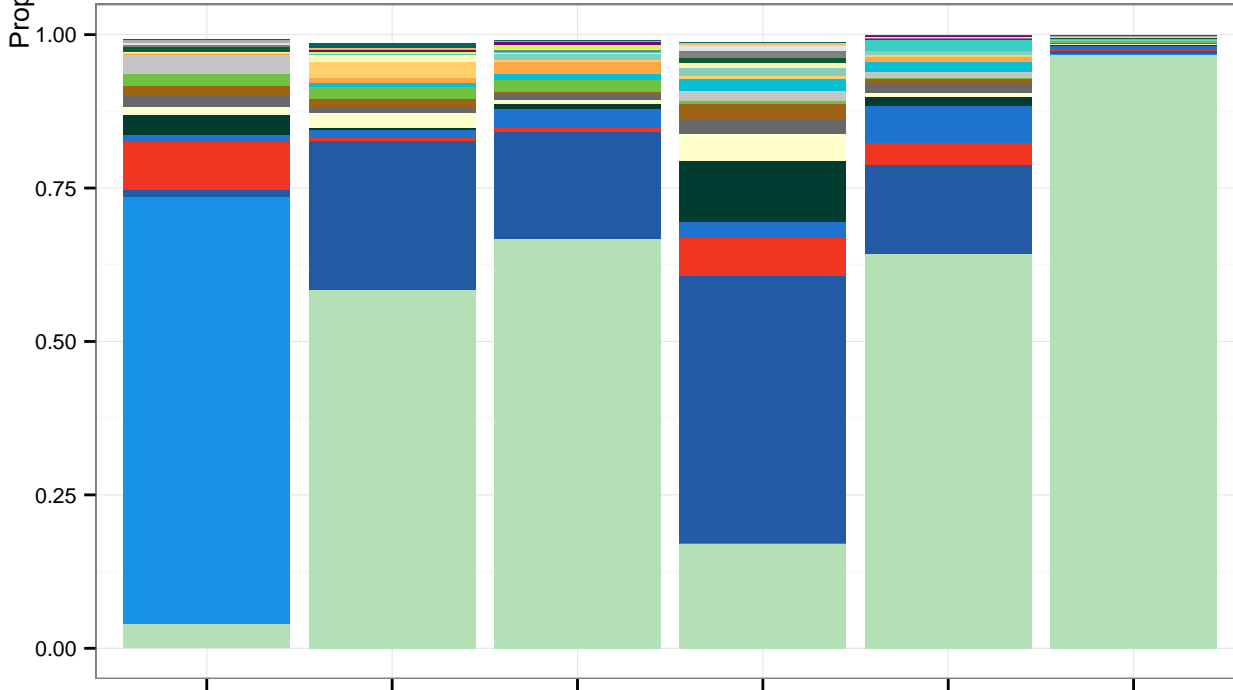


Subject 125: Caucasian, non-Hispanic, 10.9 y/o at enrollment

Girl Vagina

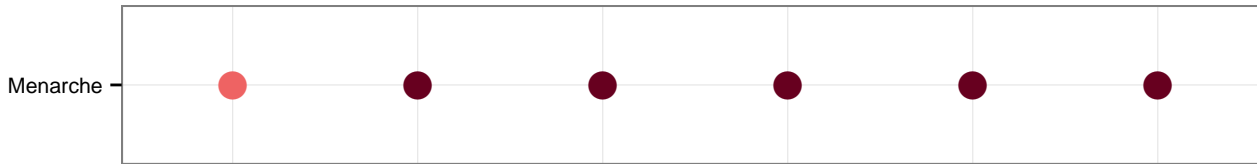


Girl Vulva



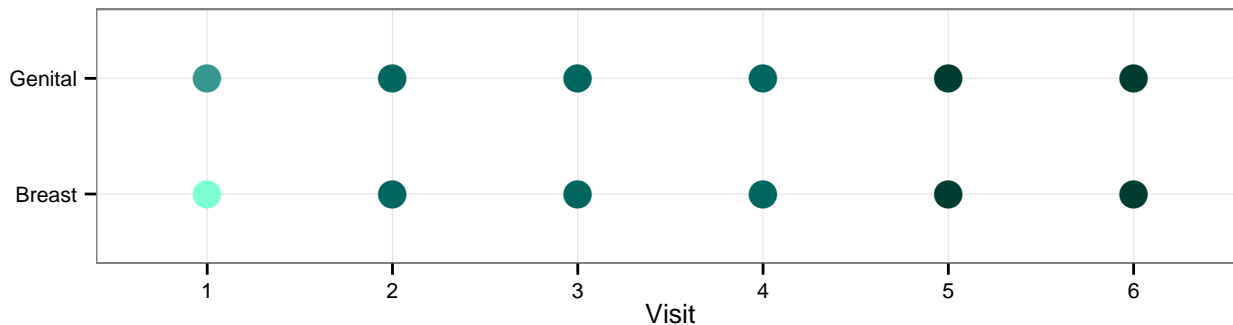
Taxon

- Lactobacillus_crispatus
- Lactobacillus_iners
- Lactobacillus_jensenii
- Finegoldia
- Lactobacillus_Other
- Prevotella
- Anaerococcus
- Other_Bacteria
- Peptoniphilus
- Corynebacterium
- Dialister
- Lactobacillus_gigeriorum
- Clostridium_sensu_stricto
- Clostridiales
- Lactobacillus_coleohominis
- Anaerospaera
- Lactobacillus_gasseri
- Segniliparus
- Megaspasphaera
- Atopobium
- Actinomycetales
- Gardnerella_vaginalis
- Fusobacterium
- Clostridiales_Incertae_Sedis_XI
- Porphyromonas



Menarche status

- Pre
- Post



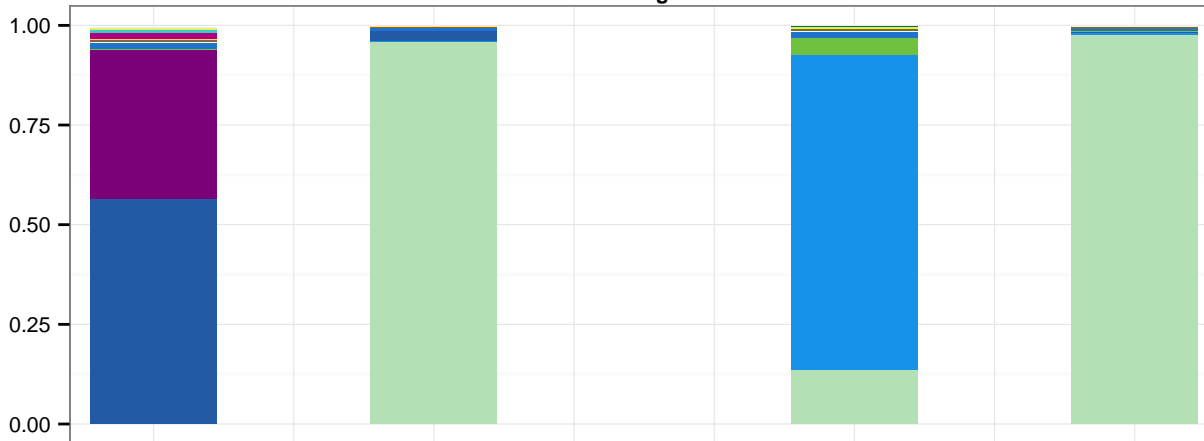
Tanner stage

- 1
- 2
- 3
- 4
- 5

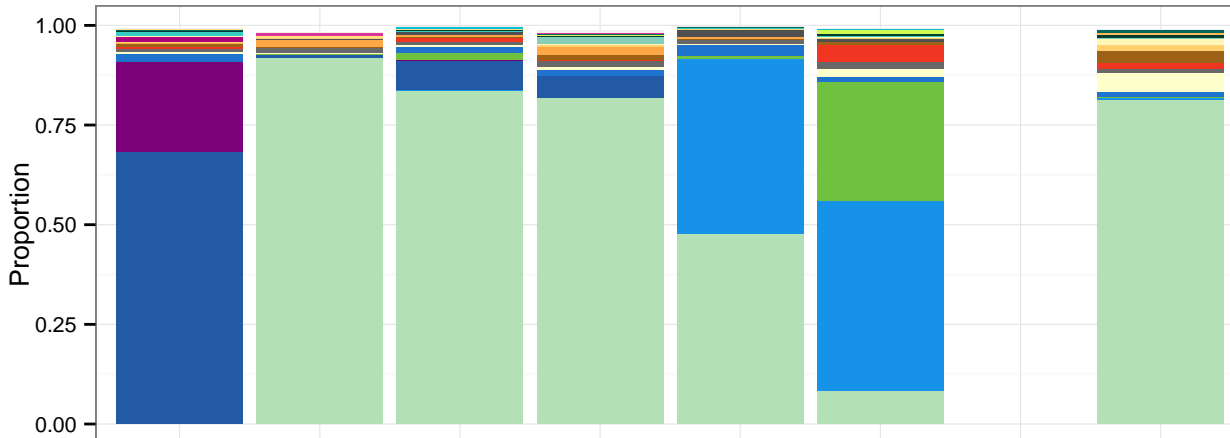
Visit

Subject 126: Caucasian, non-Hispanic, 10.6 y/o at enrollment

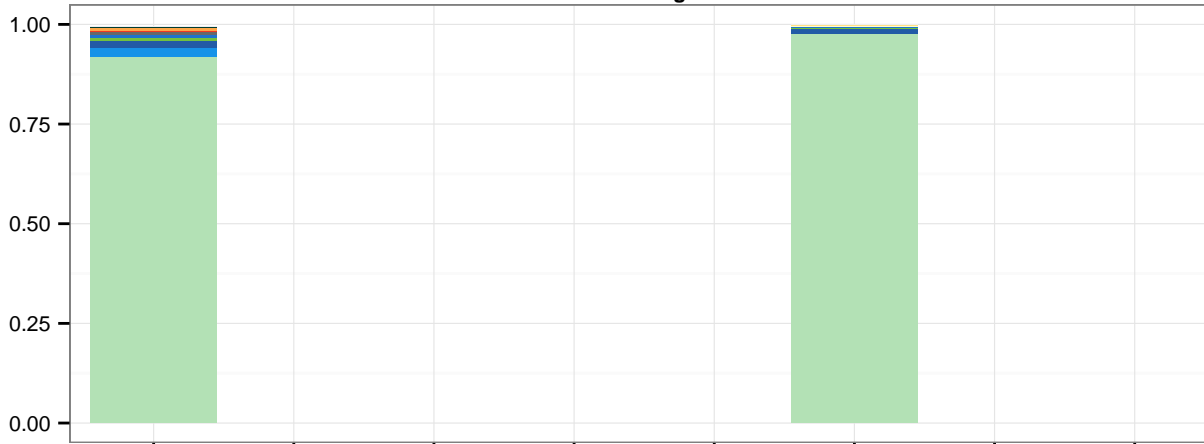
Girl Vagina



Girl Vulva



Mother Vagina



Taxon

- Lactobacillus_crispatus
- Lactobacillus_iners
- Lactobacillus_jensenii
- Gardnerella_vaginalis
- Corynebacterium
- Lactobacillus_Other
- Anaerococcus
- Other_Bacteria
- Finnegoldia
- Peptoniphilus
- Clostridium_sensu_stricto
- Staphylococcus
- Clostridiales
- Gardnerella_Other
- Anaerosphaera
- Lactobacillus_coleohominis
- Lactobacillus_gasseri
- Prevotella
- Actinomycetales
- Clostridiales_Incertae_Sedis_XI
- Porphyromonas
- Blautia
- Lactobacillus_gigeriorum
- Bifidobacterium
- Acidovorax

Menarche

Menarche status

- Pre
- Post

Genital

Breast

Tanner stage

- 1
- 2
- 3
- 4
- 5

1

2

3

4

5

6

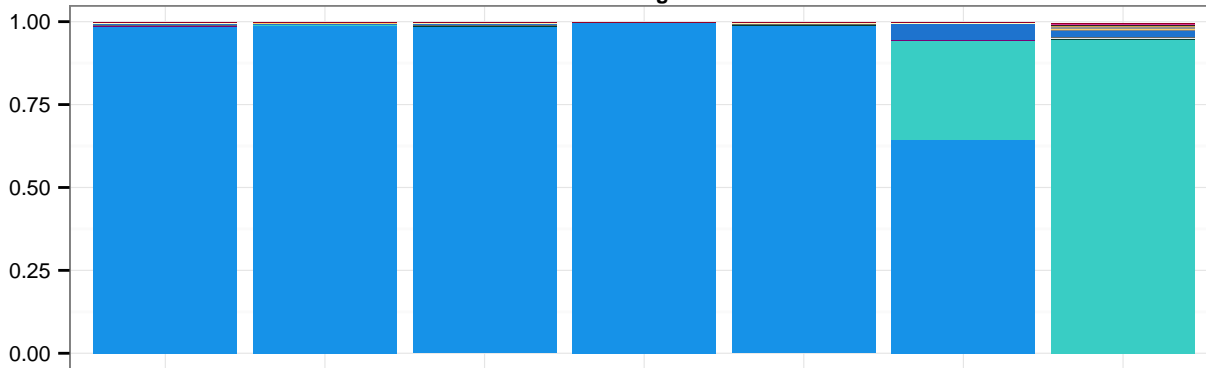
7

8

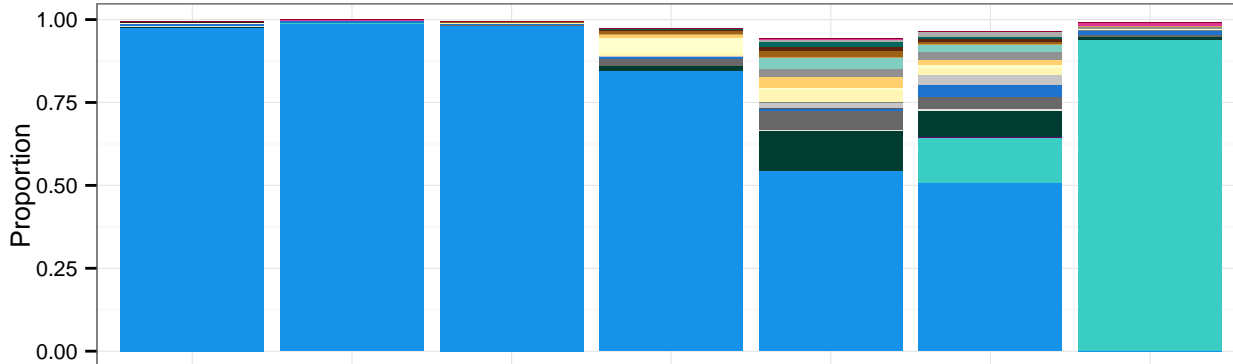
Visit

Subject 127: Native American, non-Hispanic, 12.1 y/o at enrollment

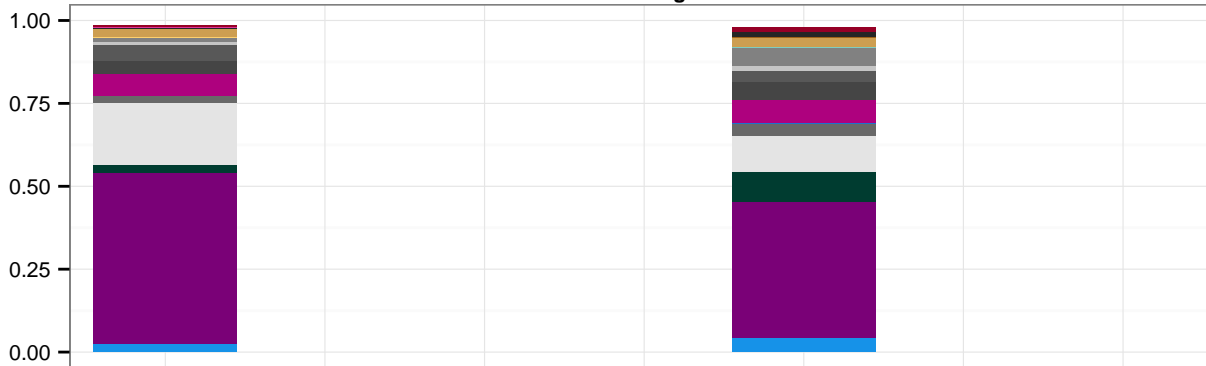
Girl Vagina



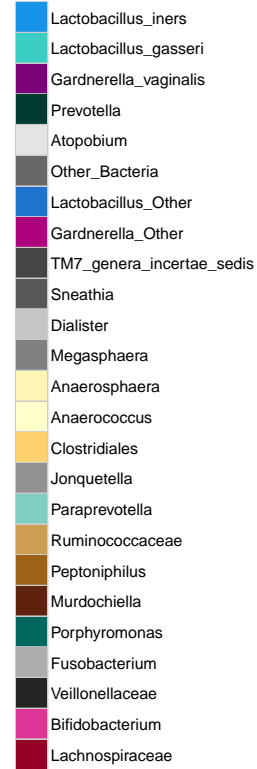
Girl Vulva



Mother Vagina



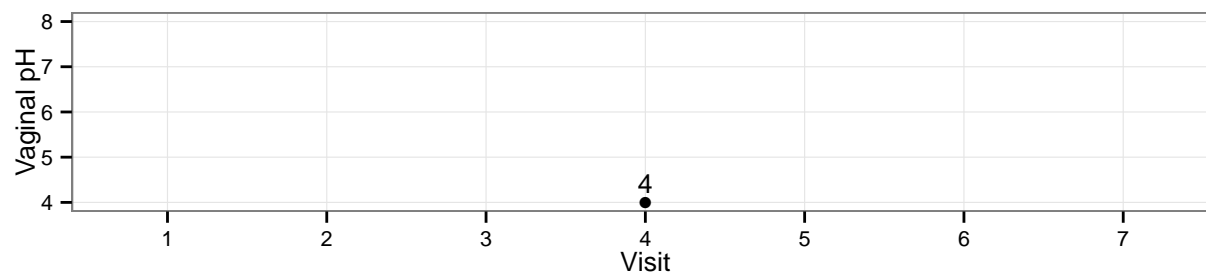
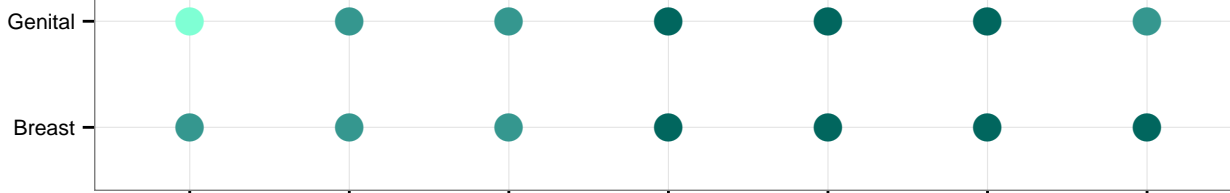
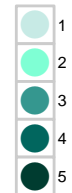
Taxon



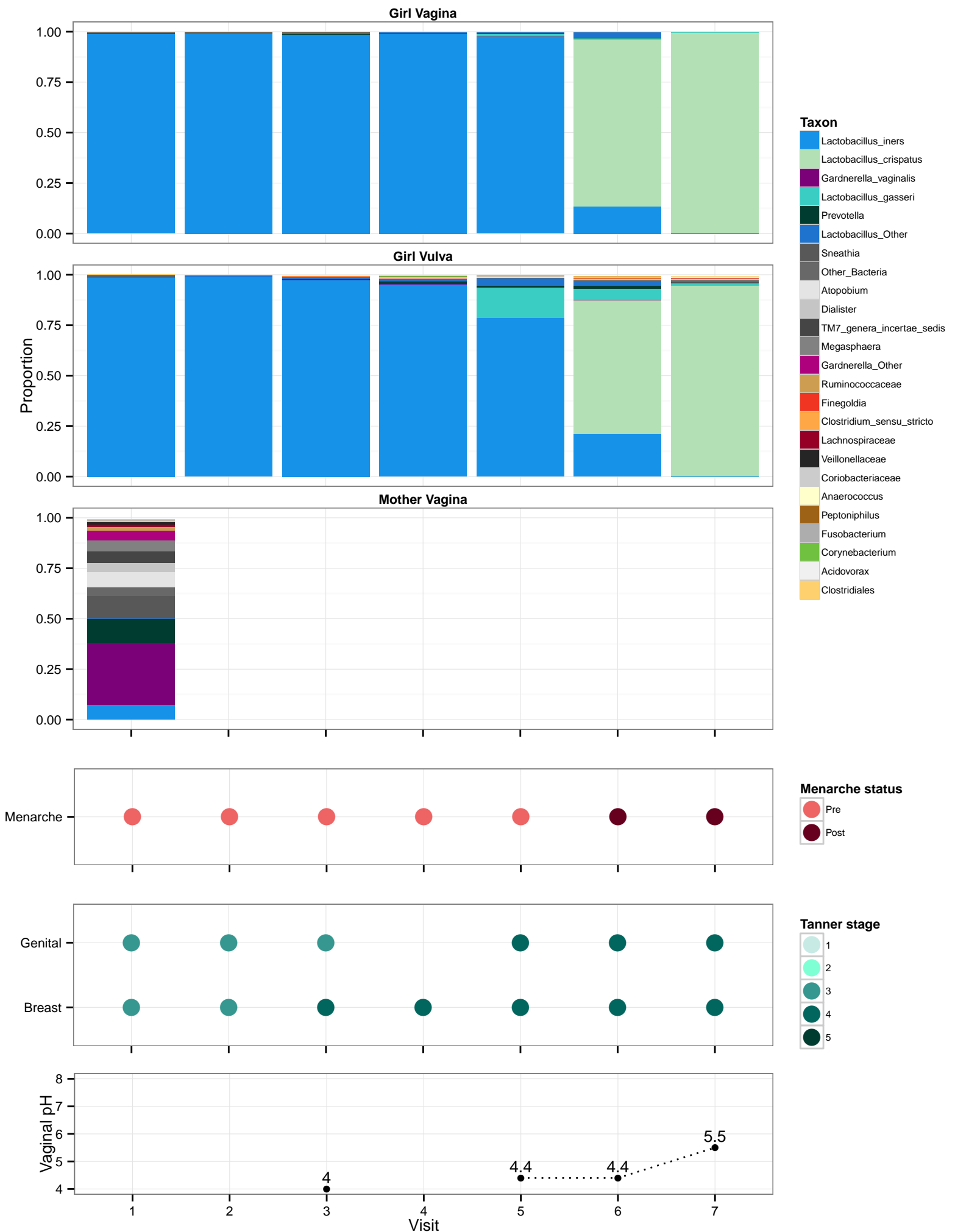
Menarche status



Tanner stage

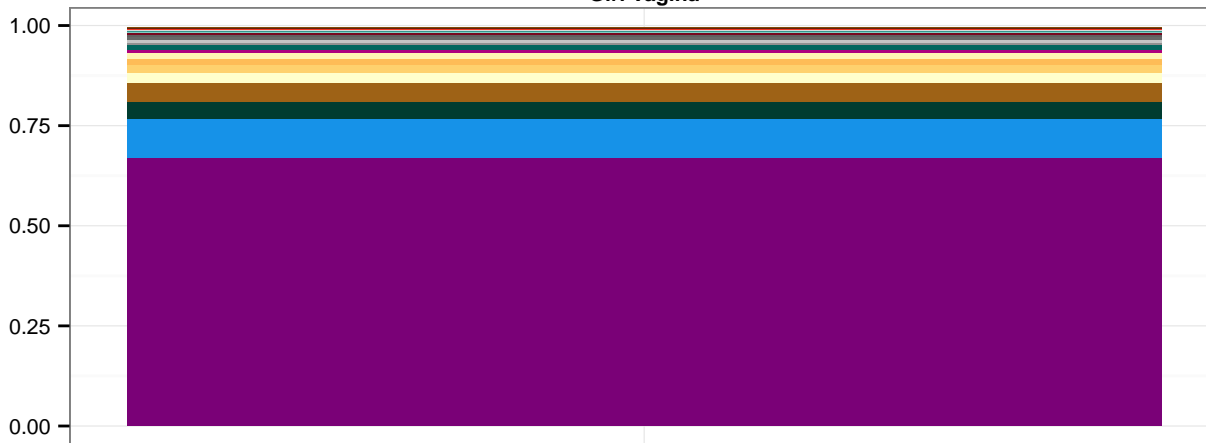


Subject 128: Native American, non-Hispanic, 11 y/o at enrollment



Subject 129: Caucasian, non-Hispanic, 10.6 y/o at enrollment

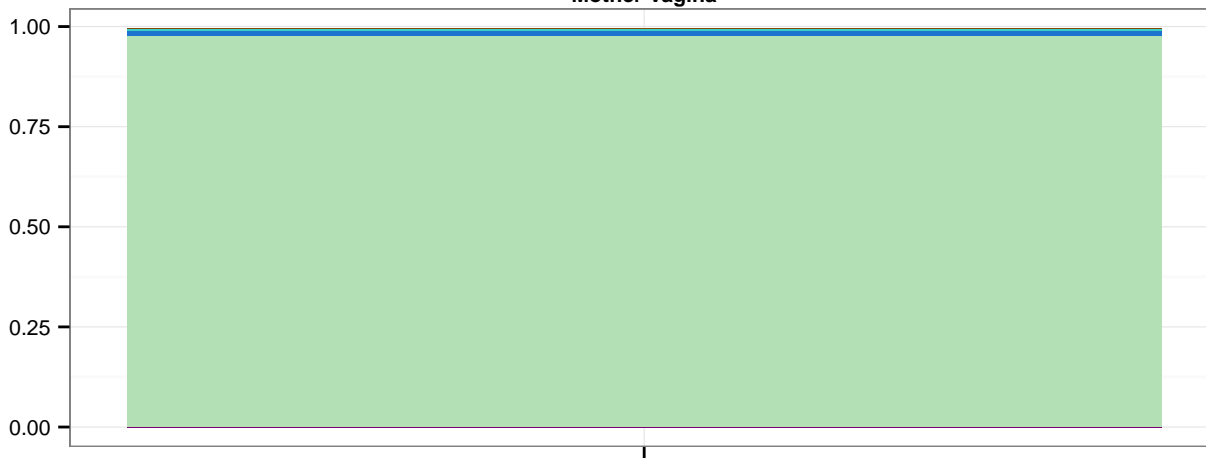
Girl Vagina



Girl Vulva



Mother Vagina



Taxon

- Gardnerella_vaginalis
- Lactobacillus_crispatus
- Lactobacillus_iners
- Prevotella
- Peptoniphilus
- Anaerococcus
- Clostridiales
- Clostridiales_Incertae_Sedis_XI
- Anaerosphaera
- Gardnerella_Other
- Porphyromonas
- Jonquetella
- Dialister
- Lactobacillus_Other
- Other_Bacteria
- Pyramidobacter
- Moryella
- Paraprevotella
- Porphyromonadaceae
- Campylobacter
- Lactobacillus_gasseri
- Fingoldia
- Segniliparus
- Murdochiella
- Peptococcus

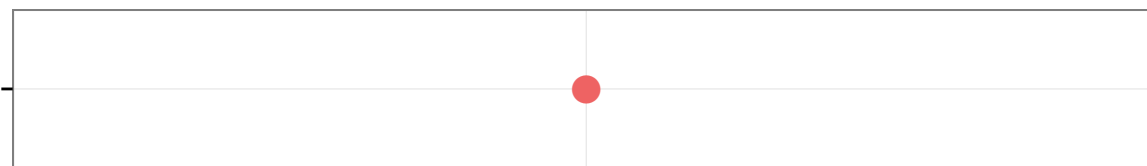
Menarche status

- Pre
- Post

Tanner stage

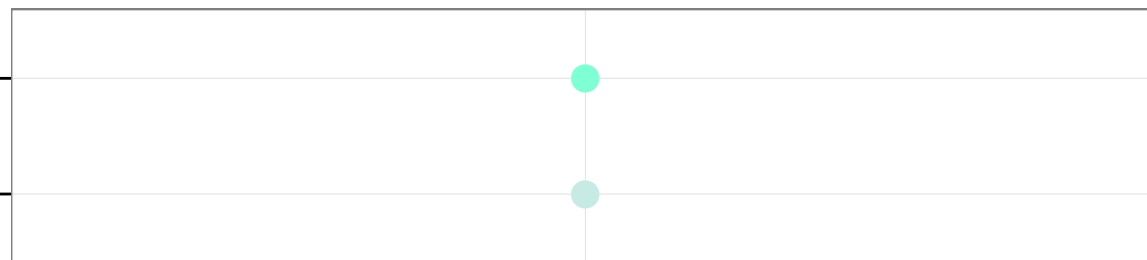
- 1
- 2
- 3
- 4
- 5

Menarche



Genital

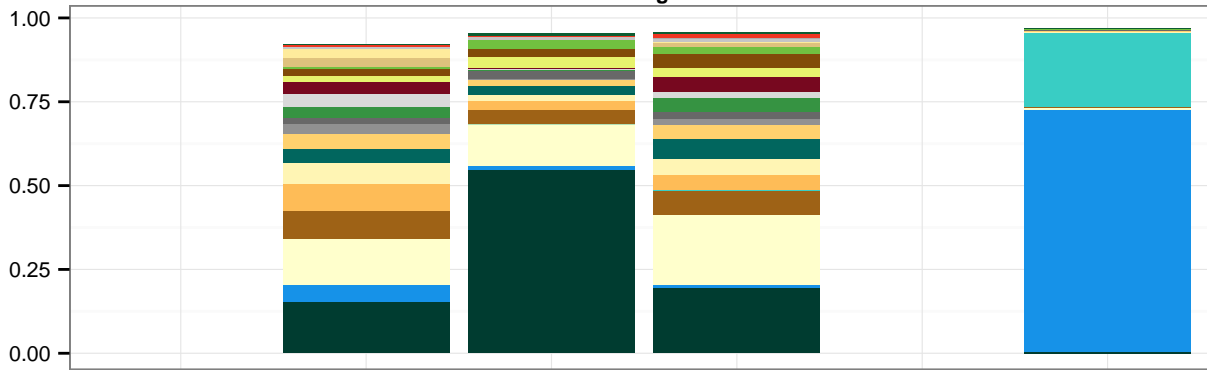
Breast



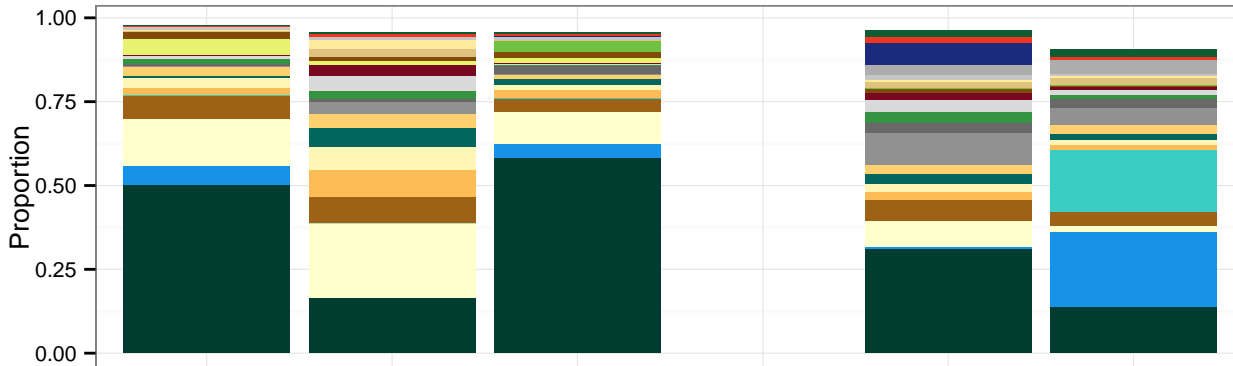
1
Visit

Subject 132: Black, non-Hispanic, 10.2 y/o at enrollment

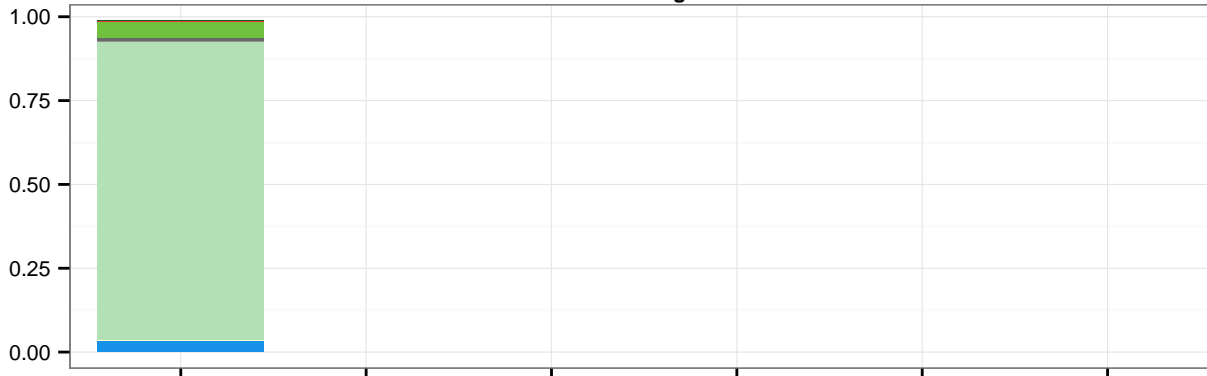
Girl Vagina



Girl Vulva



Mother Vagina



Taxon

- Prevotella
- Lactobacillus_iners
- Anaerococcus
- Lactobacillus_crispatus
- Peptoniphilus
- Lactobacillus_gasseri
- Clostridiales_Incertae_Sedis_XI
- Anaerosphaera
- Porphyromonas
- Clostridiales
- Jonquetella
- Other_Bacteria
- Mobiluncus
- Campylobacter
- Moryella
- Actinomyces
- Peptococcus
- Corynebacterium
- Saccharofermentans
- Anaerovorax
- Dialister
- Fusobacterium
- Streptococcus_anginosus
- Finegoldia
- Segniliparus

Menarche

Menarche status

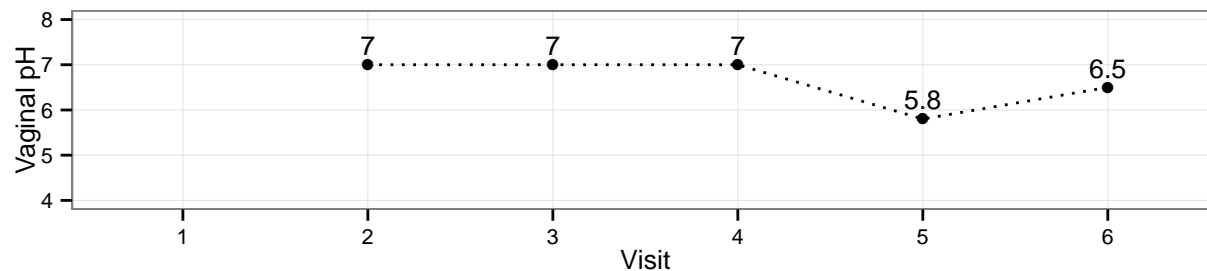
- Pre
- Post

Genital

Tanner stage

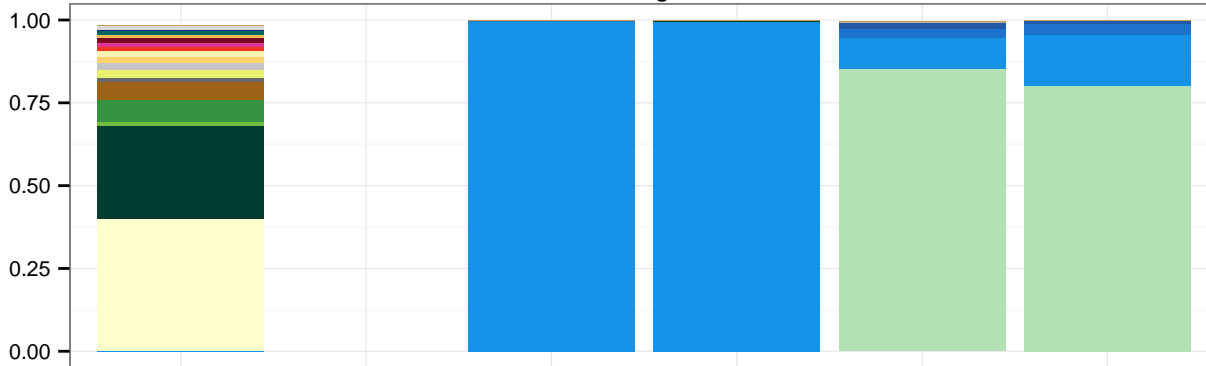
- 1
- 2
- 3
- 4
- 5

Breast

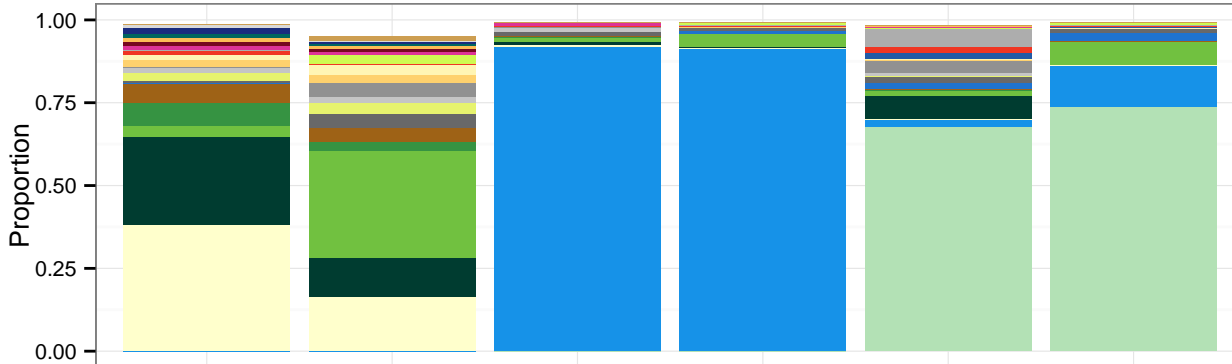


Subject 133: Black, non-Hispanic, 11.6 y/o at enrollment

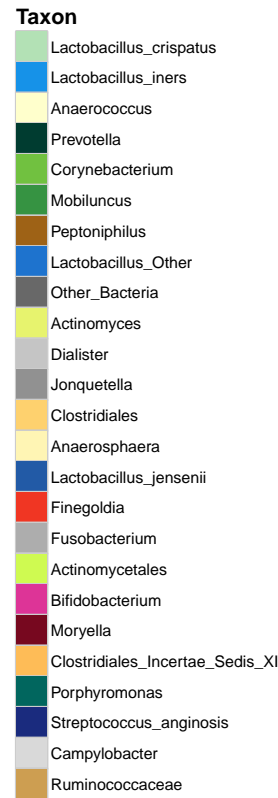
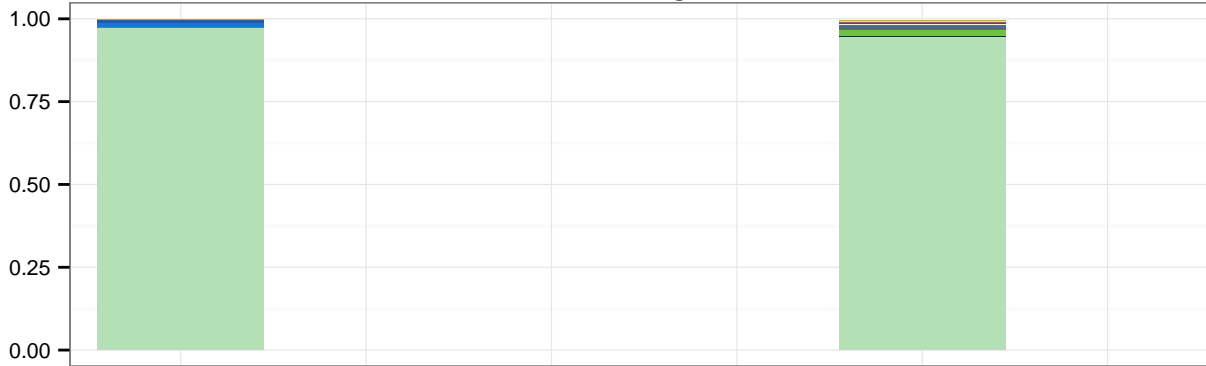
Girl Vagina



Girl Vulva



Mother Vagina



Menarche

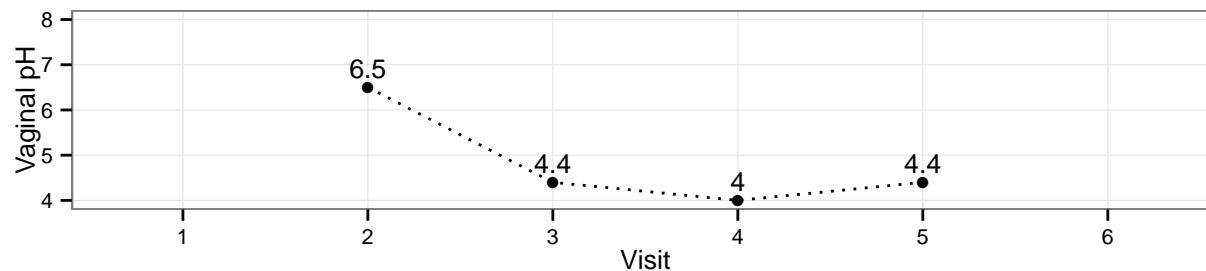
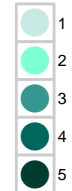
Menarche status



Genital

Breast

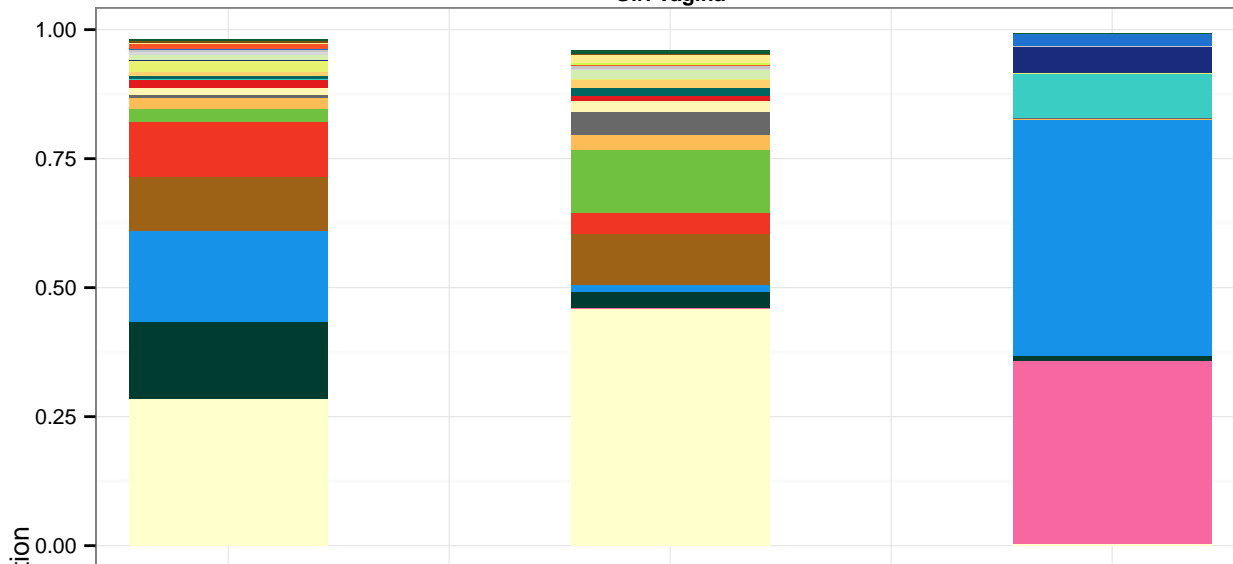
Tanner stage



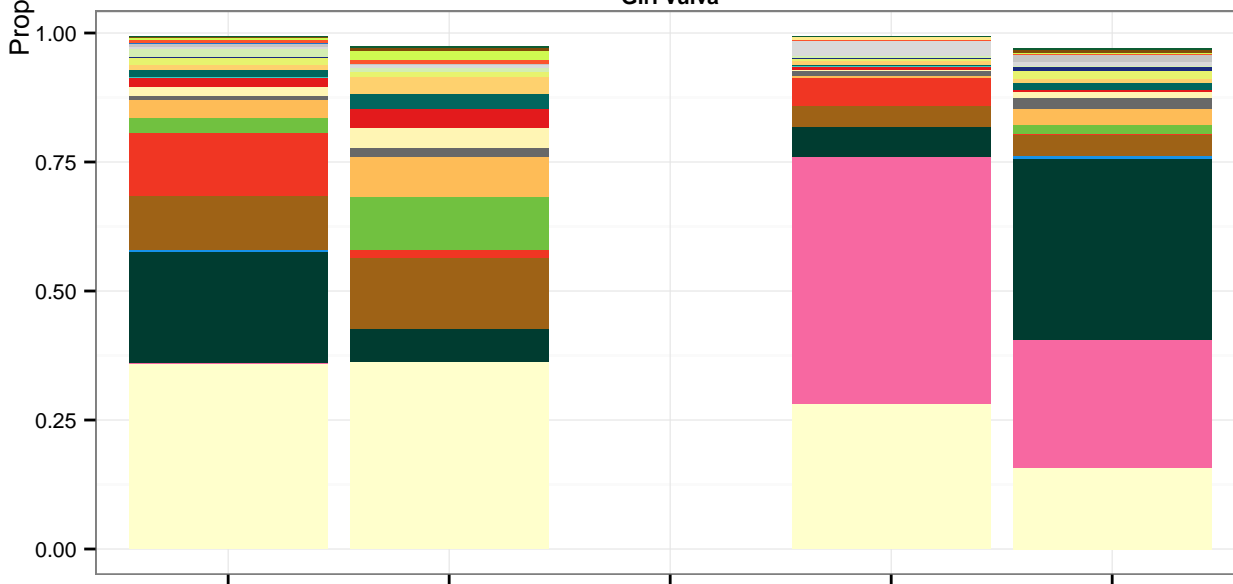
Visit

Subject 134: Black, non-Hispanic, 10.8 y/o at enrollment

Girl Vagina



Girl Vulva



Taxon

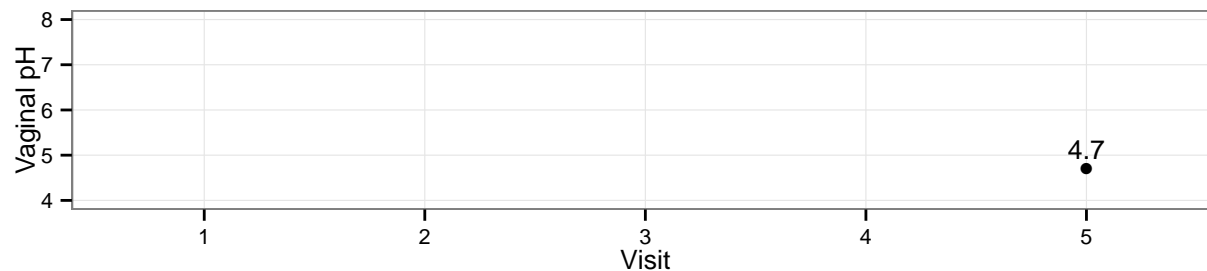
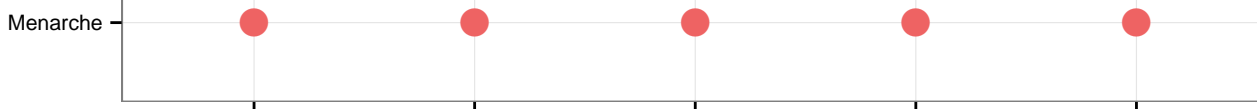
- Anaerococcus
- Alloscardovia
- Prevotella
- Lactobacillus_iners
- Peptoniphilus
- Finegoldia
- Corynebacterium
- Clostridiales_Incertae_Sedis_XI
- Other_Bacteria
- Anaerospaera
- Gallicola
- Lactobacillus_gasseri
- Porphyromonas
- Clostridiales
- Actinomyces
- Streptococcus_anginosus
- Facklamia
- Campylobacter
- Dialister
- Lactobacillus_Other
- Fastidiosipila
- Actinomycetales
- Actinobaculum
- Peptococcus
- Segniliparus

Menarche status

- Pre
- Post

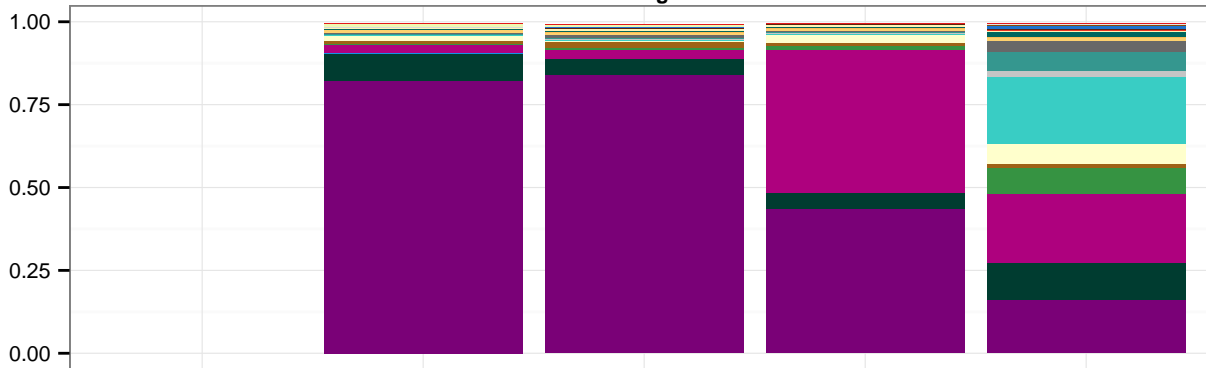
Tanner stage

- 1
- 2
- 3
- 4
- 5

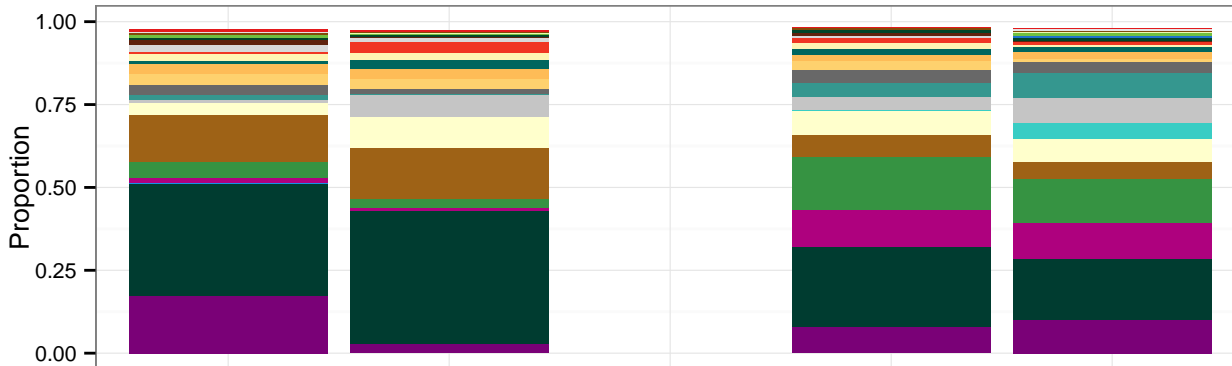


Subject 135: Black, non-Hispanic, 11.1 y/o at enrollment

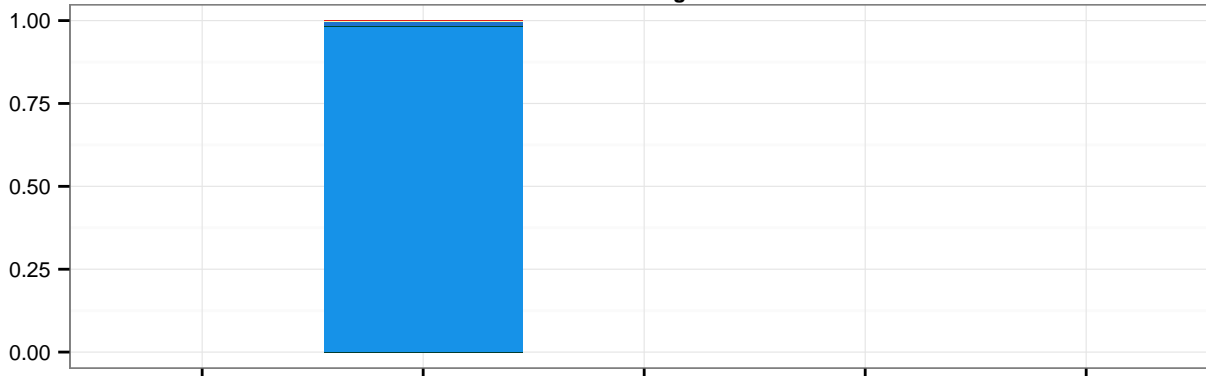
Girl Vagina



Girl Vulva



Mother Vagina



- Taxon**
- Gardnerella_vaginalis
 - Prevotella
 - Lactobacillus_iners
 - Gardnerella_Other
 - Mobiluncus
 - Peptoniphilus
 - Anaerococcus
 - Lactobacillus_gasseri
 - Dialister
 - Porphyromonadaceae
 - Other_Bacteria
 - Clostridiales
 - Clostridiales_Incertae_Sedis_XI
 - Porphyromonas
 - Anaerosphaera
 - Finegoldia
 - Campylobacter
 - Murdochella
 - Varibaculum
 - Lactobacillus_Other
 - Corynebacterium
 - Aerococcus
 - Peptococcus
 - Atopobium
 - Gallicola

Menarche

Menarche status

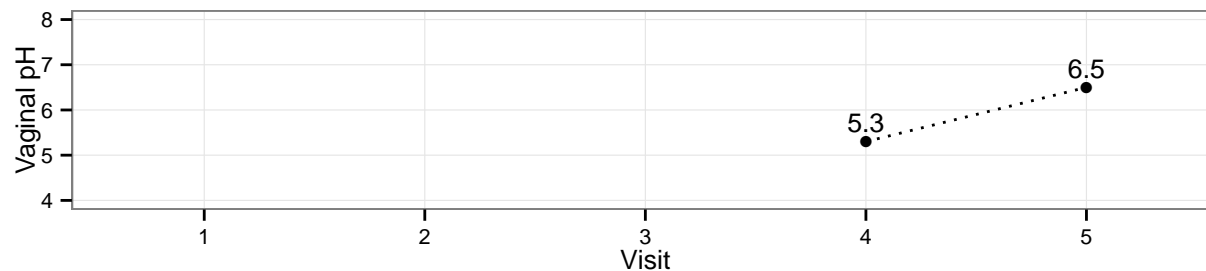
- Pre
- Post

Genital

Breast

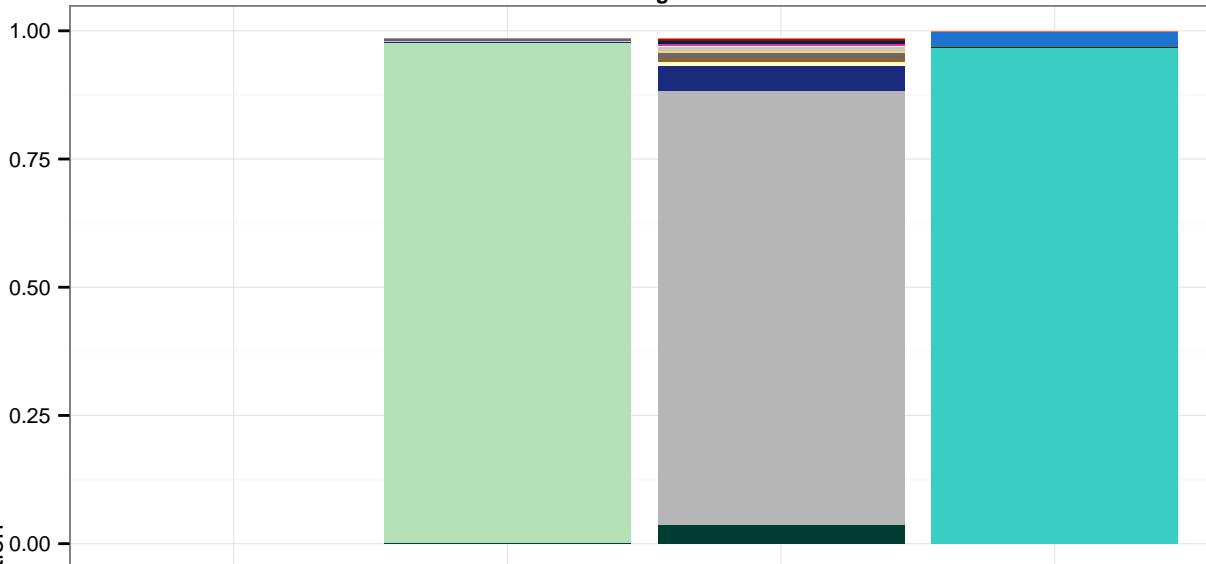
Tanner stage

- 1
- 2
- 3
- 4
- 5

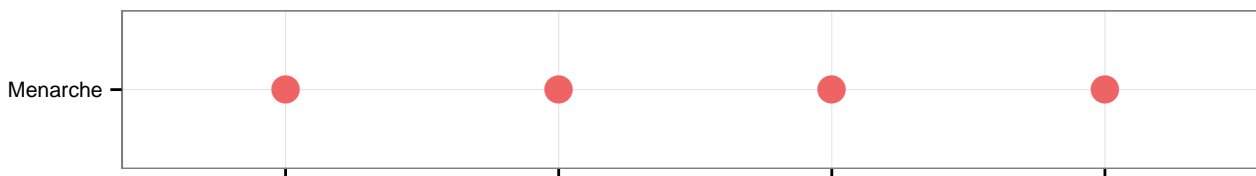
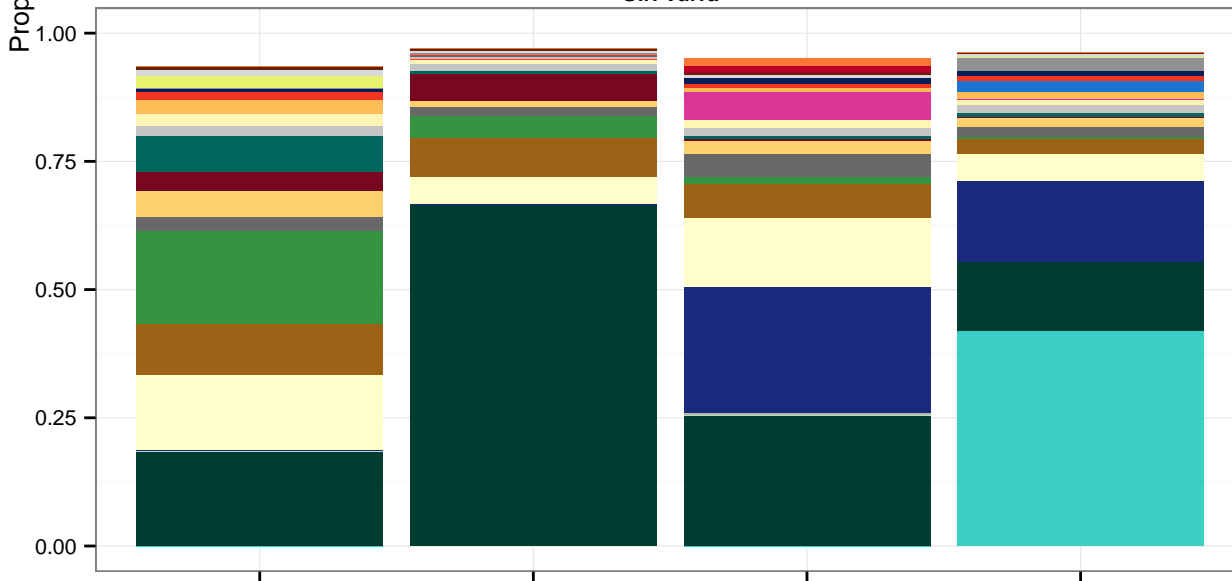


Subject 136: Black, non-Hispanic, 10.6 y/o at enrollment

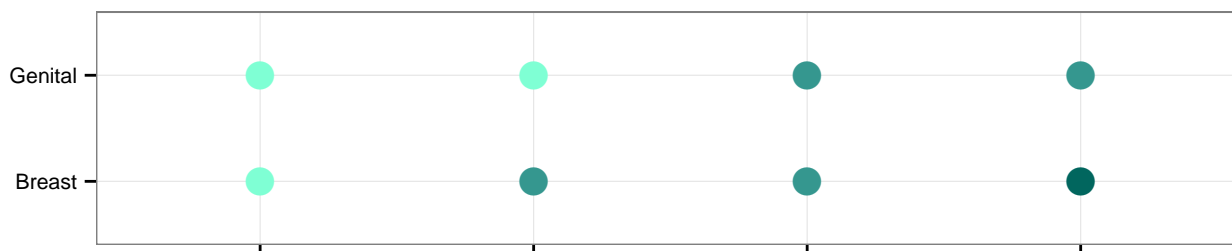
Girl Vagina



Girl Vulva



Menarche status



Tanner stage

