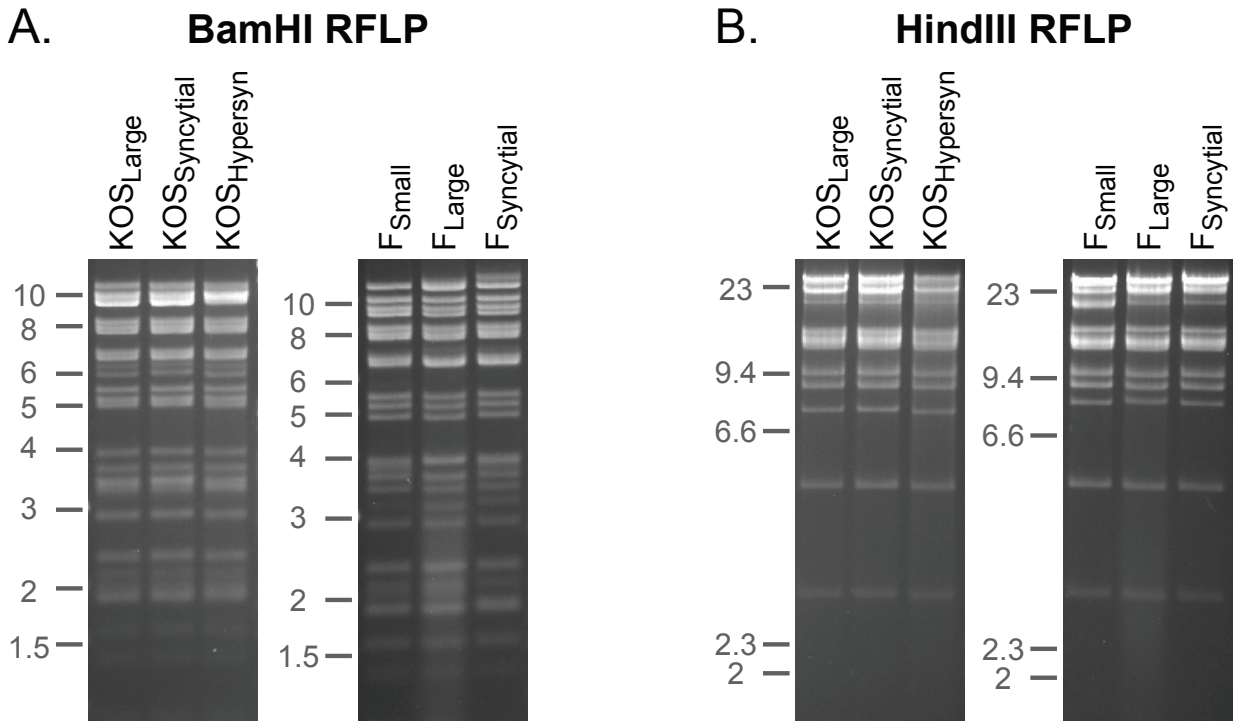


Supplemental Figure S2. RFLP analysis of HSV-1 KOS and F sub-clones confirms draft genomes but obscures syncytial differences.



Supplemental Figure S2. RFLP analysis of HSV-1 KOS and F sub-clones confirms draft genomes but obscures syncytial differences. Restriction fragment length polymorphism analysis (RFLP) revealed no major differences in digest patterns, for sub-clones of a given strain. (A) BamHI and (B) HindIII RFLPs were analyzed for sub-clones of HSV-1 KOS and F described in Figure 1. Marker lanes (size in kb) are shown to the left of each gel.