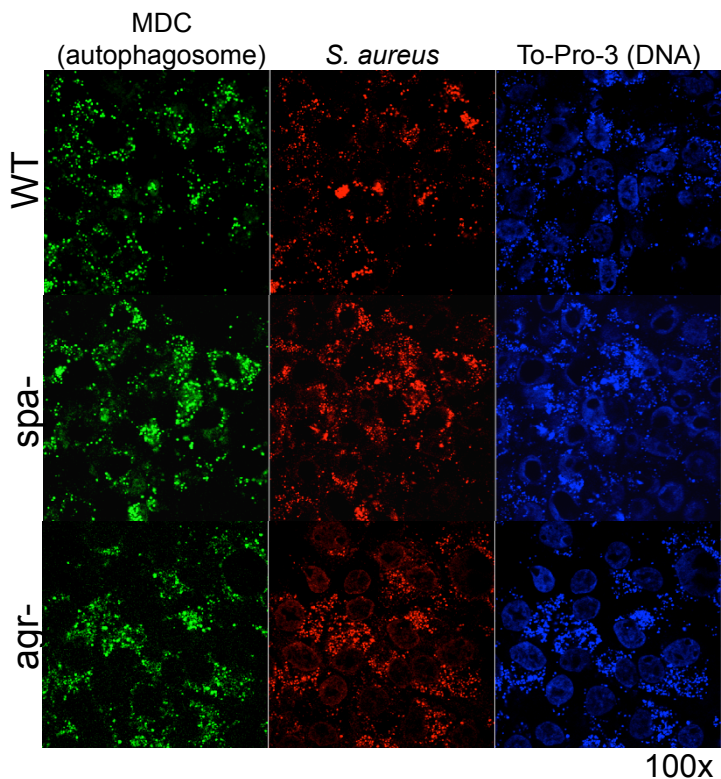


Supplemental Figure 2



Supplemental Figure 2. Visualization of USA300 and mutants with anti-*S.aureus* Ab. A comparison of the anti- *S. aureus* staining achieved in HaCats exposed to WT, *spa* null or *agr* null mutant USA300; staining for MDC (green), *S. aureus* (red) or topo-3 (DNA) – blue, demonstrating roughly equivalent detection of *S. aureus* mutants that have very different amounts of surface protein A expression.