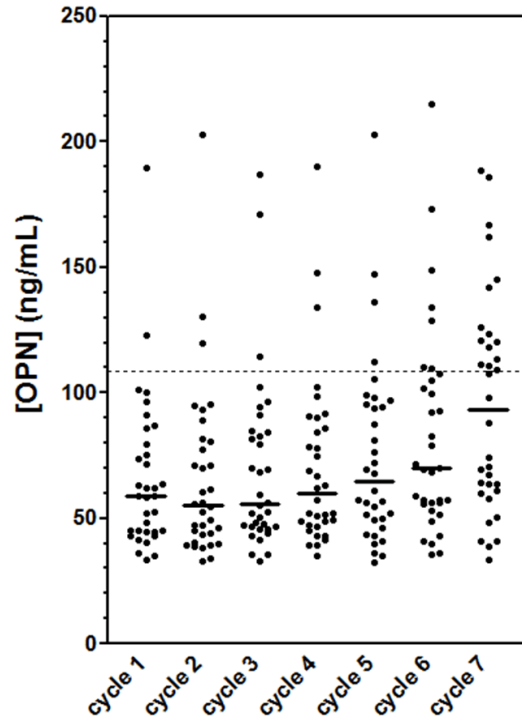
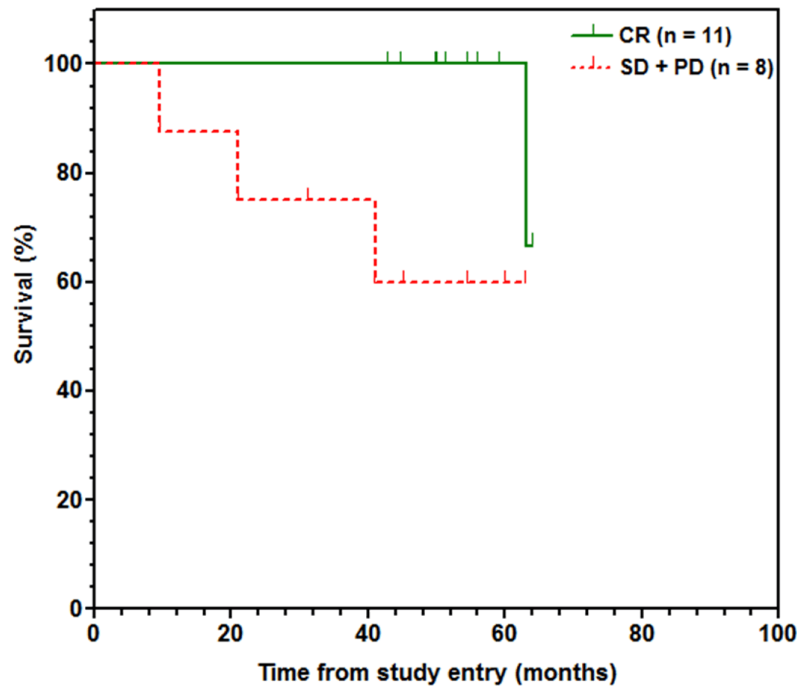


Osteopontin as a biomarker in locally advanced breast cancer



Supplemental Figure 1. OPN levels across 7 cycles of neoadjuvant treatment. Each point represents the average OPN concentration measured for 1 patient or healthy woman; lines mark the median values. Dashed lines indicate upper limit of OPN in a group of 90 healthy women (108.6 ng/ml) (from [26]).



Supplemental Figure 2. Association of response to neoadjuvant chemotherapy with LABC patient survival. Kaplan-Meier survival curves were constructed after dividing the patients into two groups according to response to therapy: complete responders (CR, 11 patients) vs non-responders (SD or PD, 8 patients). Hazard Ratio = 5.7; 95% confidence interval 0.8-50.7; $P = 0.083$.