

Synthetic Complete Growth Media (-/+) Indicated Nutrient/Drug

A

Number of Tetrads Dissected	YEPD	-URA	-TRP	-LEU	+ G418	-URA + G418	-URA -TRP	-URA -TRP + G418
91	197	131	88	99	44	44	51	0 (22)

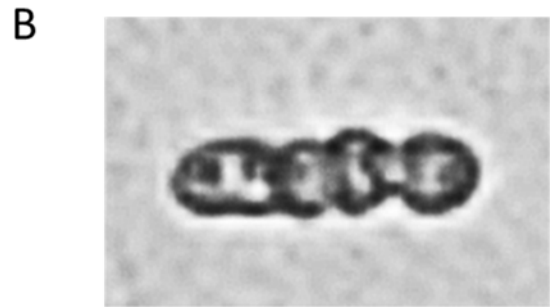


Figure S4 Tetrad analysis of PS1-hp mutants and the terminal MCM phenotype of *mcm4 mcm5* PS1-hp double mutant spores. A. CRY119 was mated to RSY1345 to form diploids, which were then sporulated. Tetrads were dissected and spores that were $-Ura^+ G418R$, which contain both the *mcm5::KanMX4* and *mcm5-HAT K658A::URA3* mutations, were tested for the presence of the *mcm4-HA K658A::TRP1* allele. As *mcm5* and *mcm4* are unlinked, we expected to find 50% (22/44) Trp^+ colonies that carry the *mcm4* PS1-hp mutation. With *mcm5-HA K658A::URA3*, no Trp^+ colonies were found ($n=44$, $p<0.005$). B. The terminal phenotype of the double *mcm4 mcm5* PS1-hp mutant is two large budded cells (magnification=400X).