

Supplemental Figure Legends.

Supplemental Figure 1: I κ B α over-expression does not induce expression of cRel dependent expression of NF κ B target genes

(A) Relative I κ B α , IL6, IL1 β and IL12 β mRNA expression in RAW 264.7 macrophages following transfection with I κ B α expression plasmid. Values are means \pm SEM. n=9. (B) Relative LPS-induced (1 μ g/ml, 5 hrs), IL6, IL1 β , and IL12 β mRNA expression in RAW 264.7 macrophages (cont) and following transfection with I κ B β expression plasmid (I κ B β +). Values are means \pm SEM. n=3. *, p<0.05 vs. untransfected LPS exposed.

Supplemental Figure 2: I κ B β over-expression induces expression of cRel but not p65

(A) Relative cRel and p65 mRNA expression in RAW 264.7 macrophages following transfection with I κ B β expression plasmid. Values are means \pm SEM. n=9. *, p<0.05 vs. untransfected controls. (B) Representative Western blot showing whole cell lysate levels of I κ B β , c-Rel and p65 proteins in control RAW 264.7 (C) and in RAW 264.7 transfected with I κ B β expression plasmid (I κ B β +). Calnexin shown as loading control. Densitometric evaluation of protein expression normalized to control is provided.

Supplemental Figure 3: Unadjusted data presented in Figure 3E and 4C.

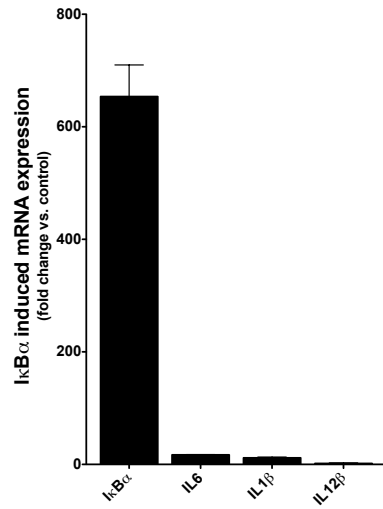
(A) Data presented in Figure 3E: Relative mRNA expression of target genes in RAW 264.7 macrophages following transfection with FLAG-tagged I κ B β expression plasmid (I κ B β +) or FLAG-tagged I κ B β expression plasmid and cRel siRNA (I κ B β +cRel-). Values are means+SEM. n=3. *, p<0.05 vs. untransfected control; †, p<0.05 vs. I κ B β expression plasmid alone. (B) Data presented in Figure 4C: Fold-increase of gene expression of MnSOD, TNF α , I κ B α , A20, RANTES, CXCL1, IP-10, IL1 β , IL6 and IL12 β following exposure to LPS (1 μ g/ml, 5 hrs), or LPS after transfection with I κ B β siRNA. Values are means \pm SEM. n=3/time point. *, p<0.05 vs. unexposed control; †, p<0.05 vs. LPS-exposed.

Supplemental Figure 4: Expression of NF κ B signaling pathway proteins is not different between AKBI and WT MEF

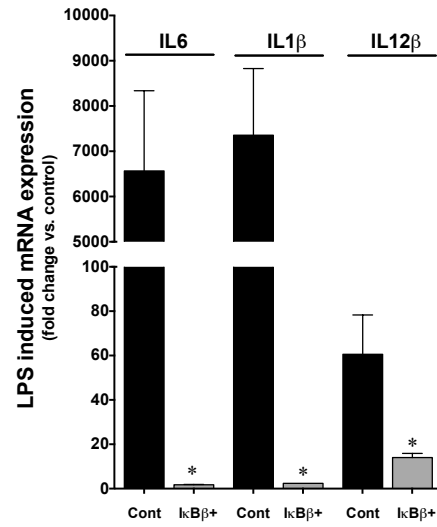
(A) Representative Western blot showing WT and AKBI lysate control levels of IKK α , IKK β , IKK ϵ , I κ B β , I κ B α , p65, p50, and c-Rel proteins with calnexin as loading control. Densitometric evaluation of protein expression normalized to WT is provided. (B) Relative IKK α , IKK β , IKK ϵ , I κ B β , I κ B α , p50, c-Rel, TLR4 and MyD88 mRNA levels. Values are means \pm SEM. n=8. *, p<0.05 vs. WT.

Supplemental Figure 1

A.

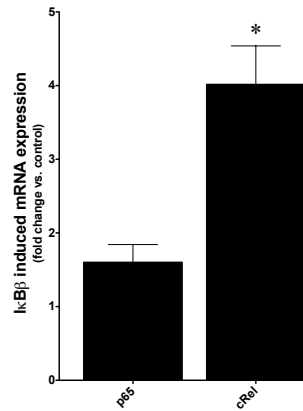


B.

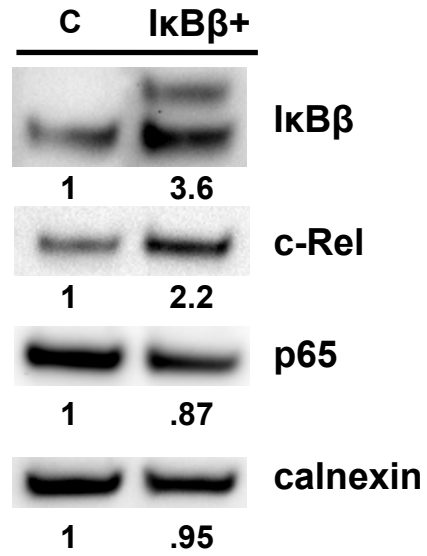


Supplemental Figure 2

A.

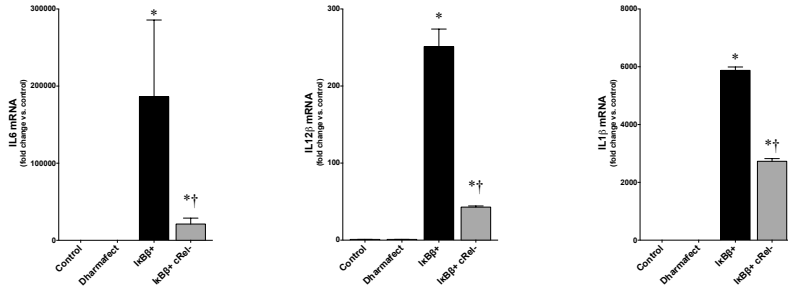


B.

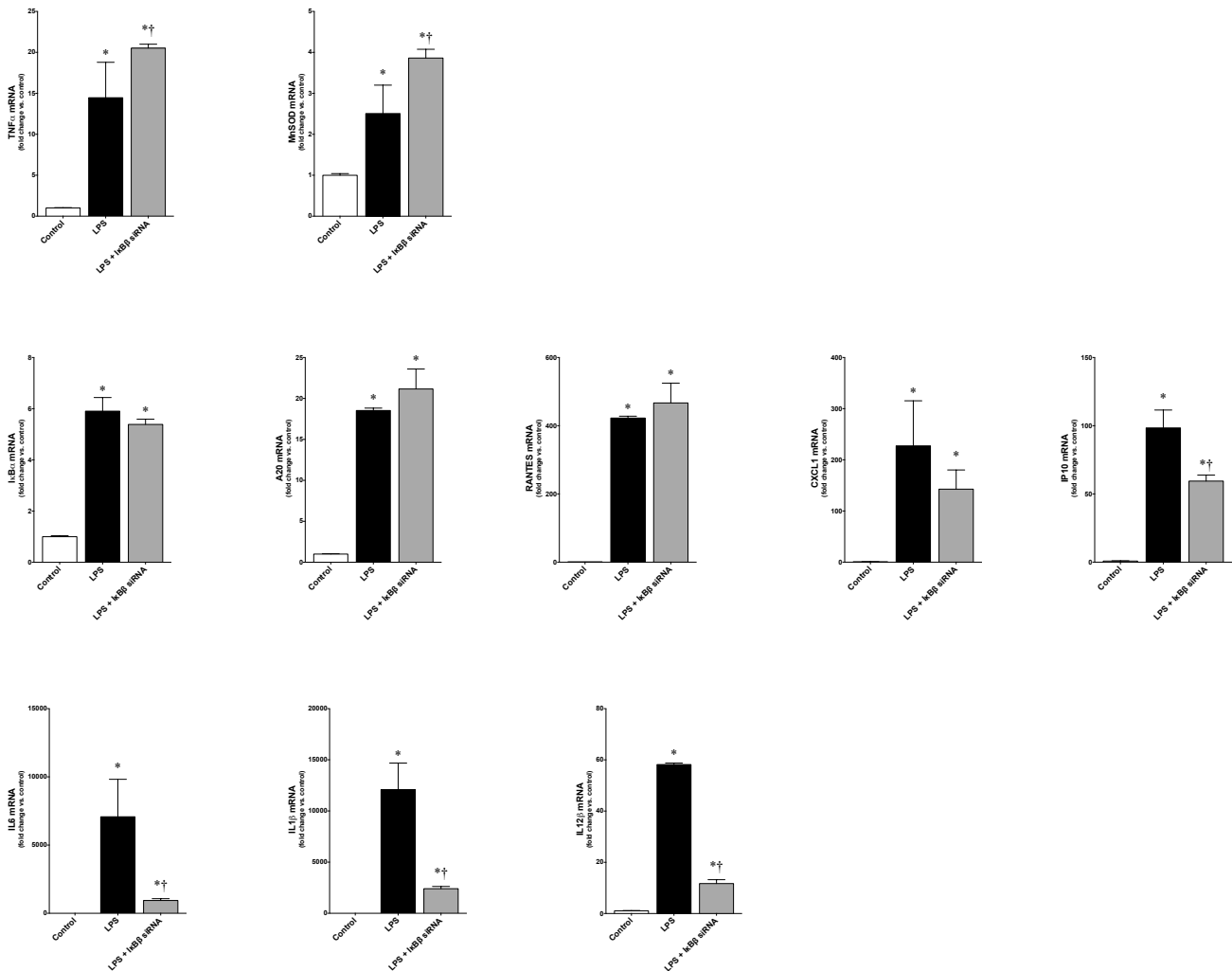


Supplemental Figure 3

A.

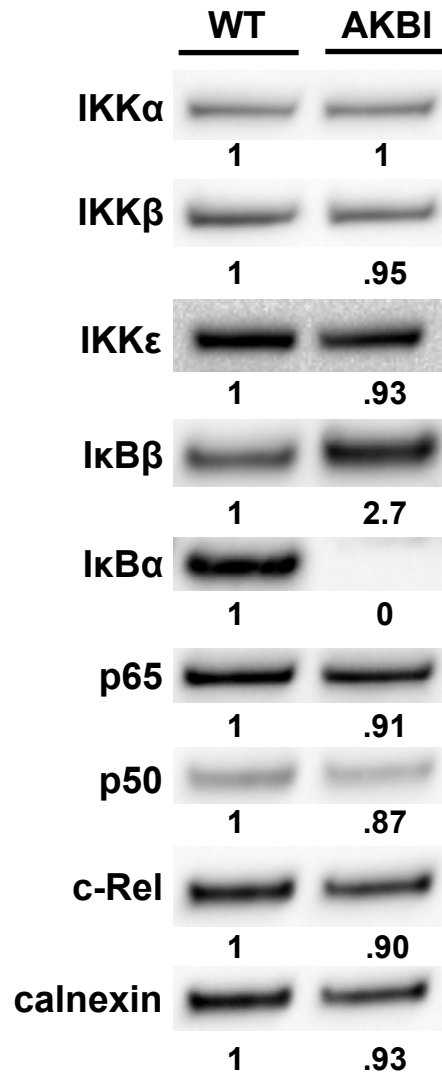


B.



Supplemental Figure 4

A.



B.

