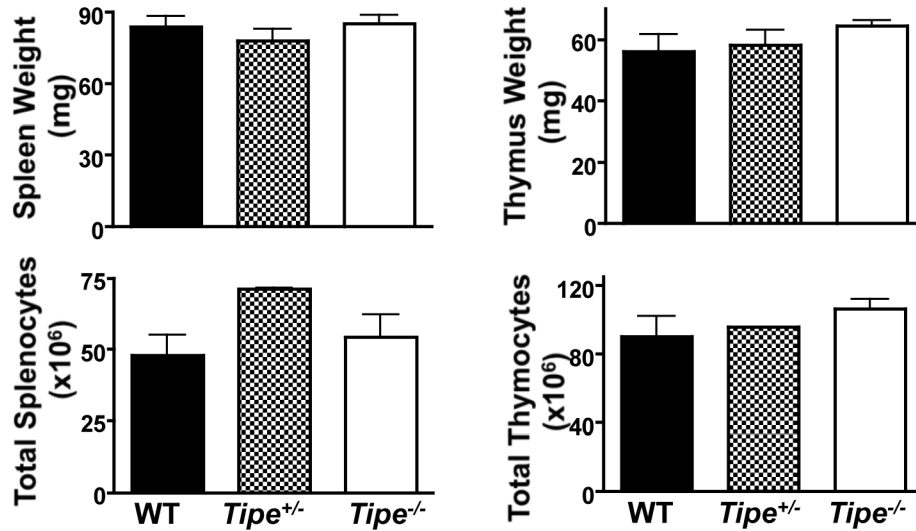
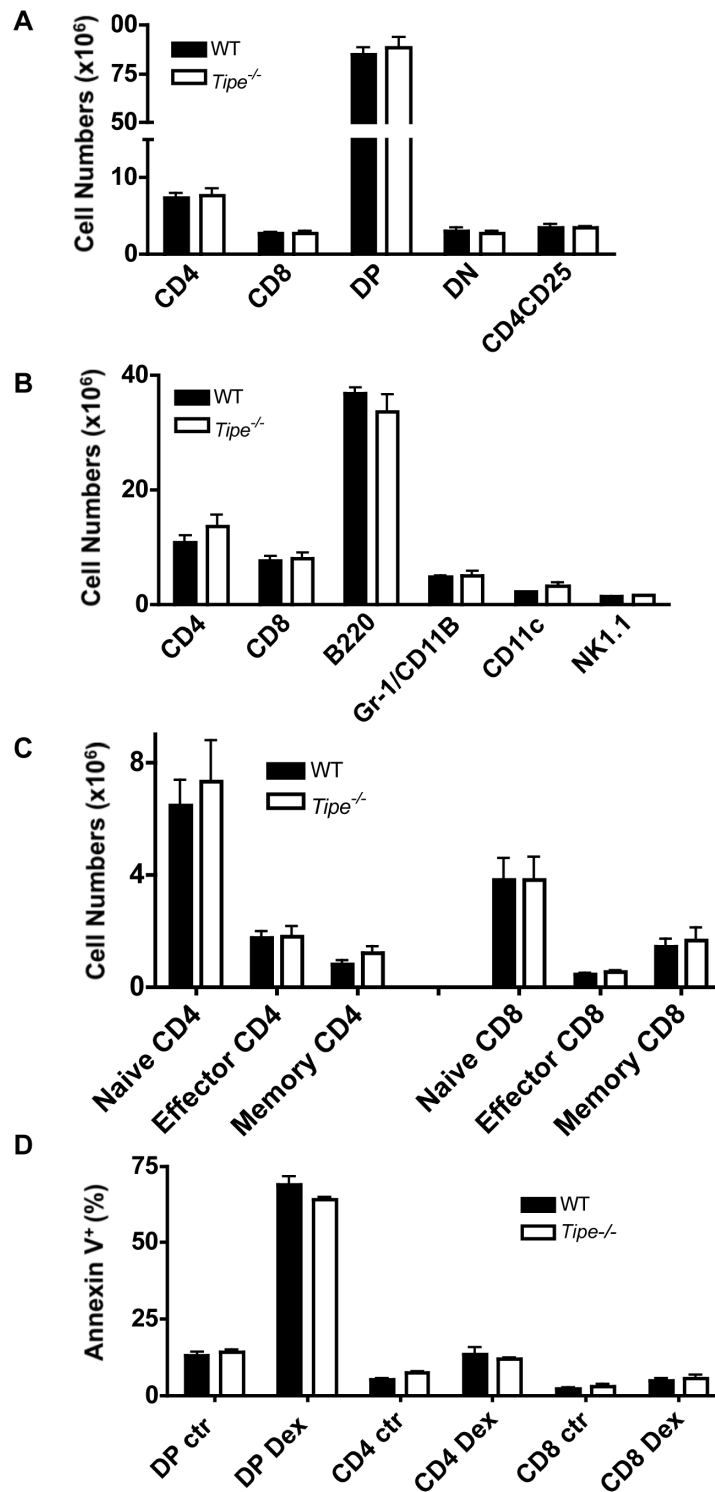


Supplemental Figures

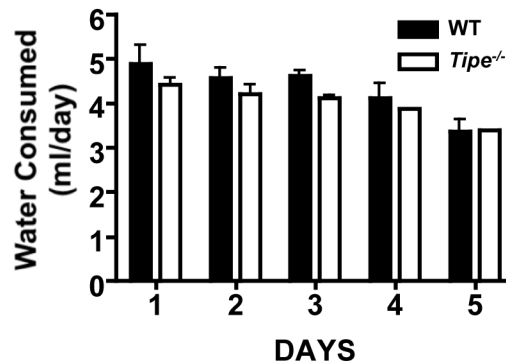


Supplemental Figure 1. Normal weight and cell numbers in the spleen and thymus of *Tipe*^{-/-} mice. Eight-weeks-old mice (n=4) of the indicated genotypes were sacrificed, and their spleen weight (A) and thymus weight (B) determined. Single cell suspensions were then prepared and total cell numbers determined (C and D). Data shown are representative of at least three experiments.



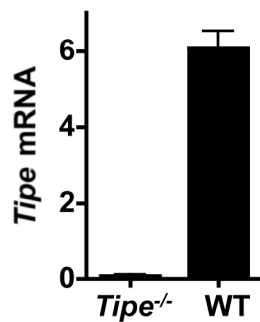
Supplemental Figure 2. Comparable immune cell compositions and death in WT and *Tipe*^{-/-} mice. Eight-weeks-old WT and *Tipe*^{-/-} mice (n=4) were sacrificed. (A) Numbers of the indicated

T cell populations per thymus. DP (double positive), CD4⁺CD8⁺; DN (double negative), CD4⁻CD8⁻. (B) Numbers of the indicated cell populations per spleen. (C) Numbers of naïve and memory T cell populations per spleen. (D) Percentages of annexin V positive thymocytes treated with or without dexamethasone (Dex) in culture for four hours. ctr, control (not treated with Dex). Data shown are representative of three experiments.



Supplemental Figure 3. No difference in water consumption between WT and *Tipe*^{-/-} mice.

Daily water consumption was determined for WT and *Tipe*^{-/-} mice (n=4) for five days. Data shown are representative of three experiments.



Supplemental Figure 4. Wild-type colon epithelial cells express *Tipe* mRNA. Epithelial cells

were isolated from WT and *Tipe* knockout colons, and their RNAs were isolated and purified as

described in Methods. The expression of Tipe mRNA was detected by real-time PCR. Data shown are representative of two experiments.