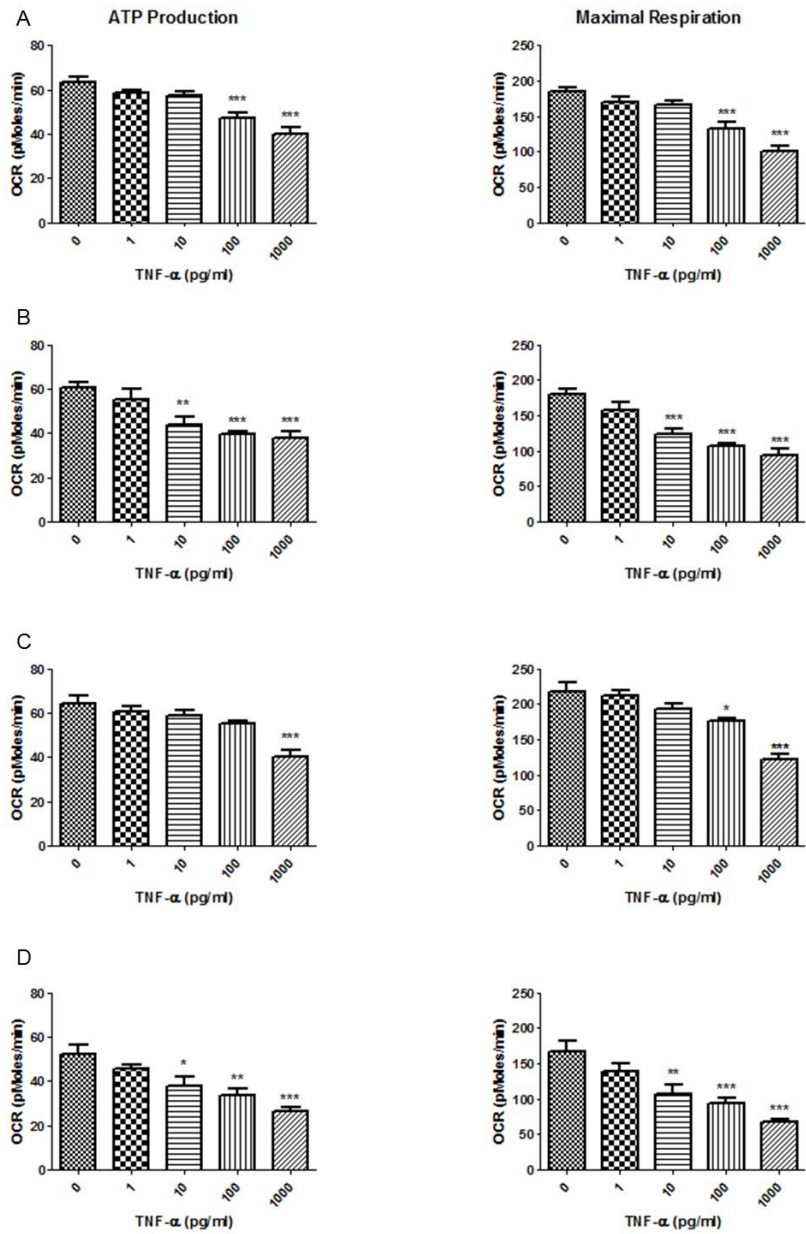
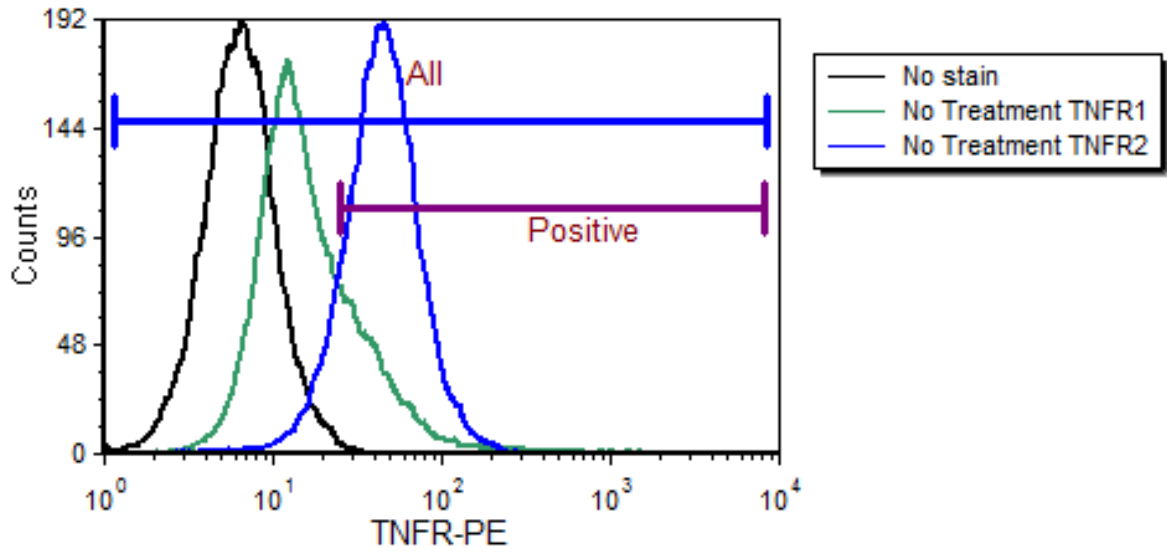


Rapid mitochondrial dysfunction mediates TNF-alpha induced neurotoxicity

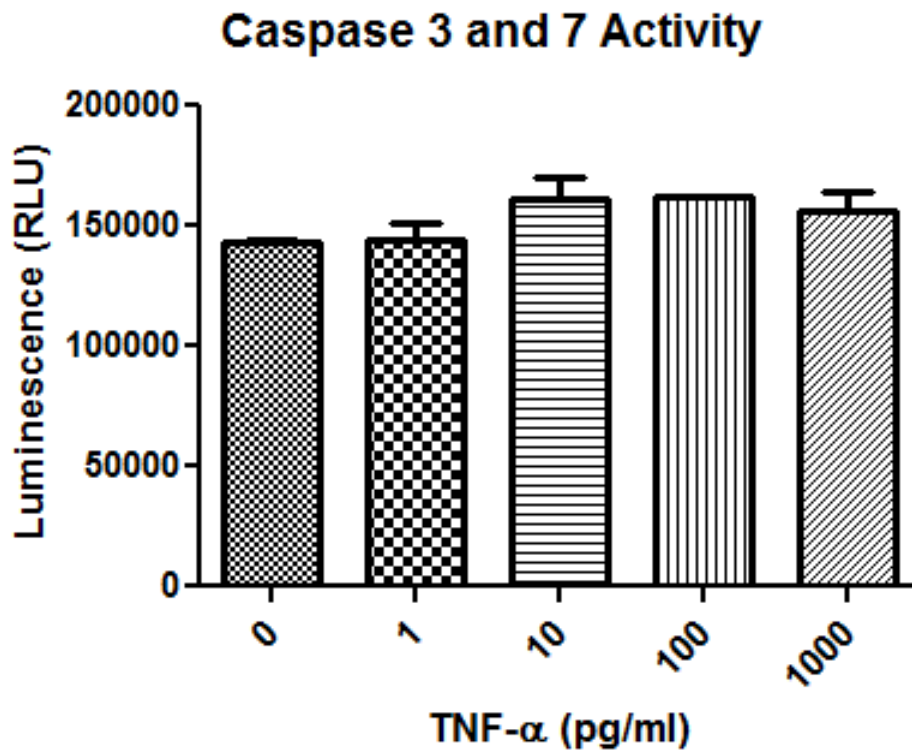
Danielle N. Doll, Stephanie L. Rellick, Taura L. Barr, Xuefang Ren, James W. Simpkins



Supplemental Figure 1: Effects of TNF- α on ATP production and maximal respiration. (A) Exposure to TNF- α for 1.5 hours. (B) Exposure to TNF- α for 3 hours. (C) Exposure to TNF- α for 6 hours. (D) Exposure to TNF- α for 12 hours. Analysis of variance and Dunnett post-hoc tests were used to assess significance. * $p < 0.05$; ** $p < 0.01$; *** $p < 0.001$. Depicted are mean + SEM for $n = 6$ /group.



Supplemental Figure 2: Flow cytometry analysis of HT-22 cell expression of TNF-R1 and TNF-R2.



Supplemental Figure 3: Effects of 1.5 hours of exposure to TNF- α on caspase 3/7 activity.

Analysis of variance did not show a significant difference among the groups. Depicted are mean + SEM for n = 6/group. When SEM is not depicted, it is too small for representation.