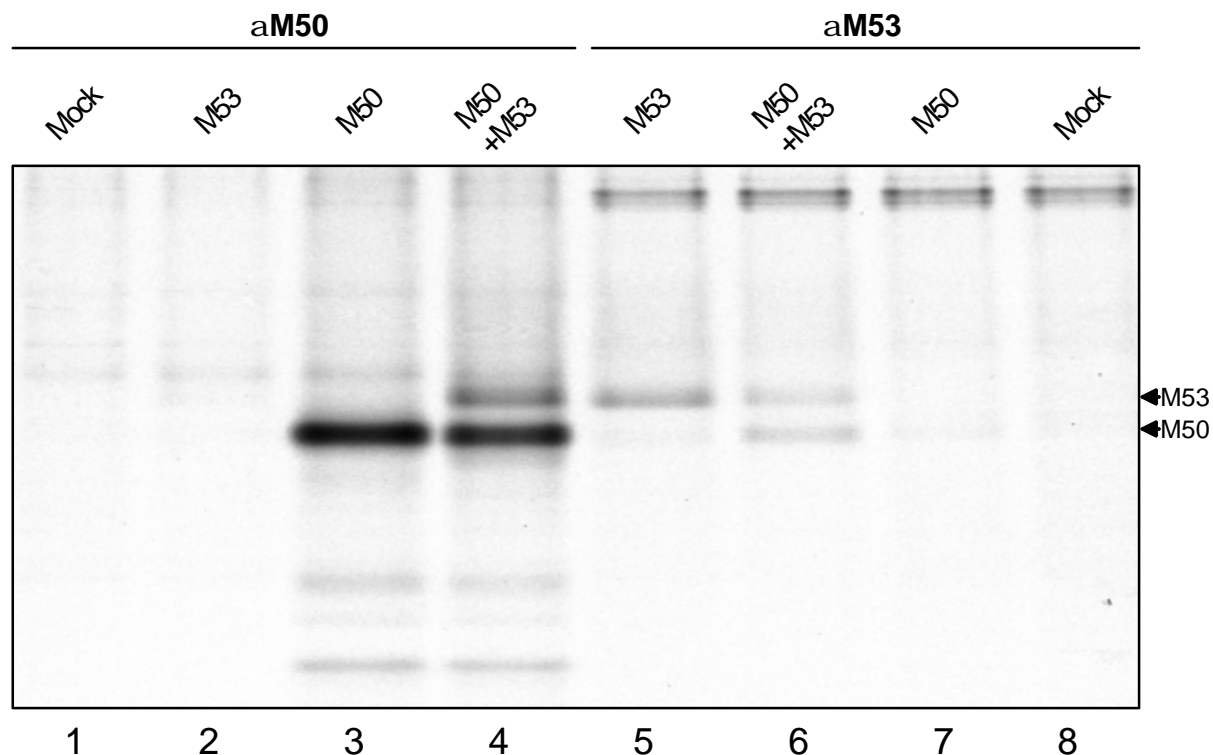


Supplementary Figure 1

Co-immunoprecipitation of wt M50/p35 and M53/p38.

293 cells were mock transfected (lanes 1,8) or transfected with pOriR6K-zeo-*ie*-M53 alone (lanes 2,5), pOriR6K-zeo-*ie*-M50 alone (lanes 3,7) or co-transfected with pOriR6K-zeo-*ie*-M50 and pOriR6K-zeo-*ie*-M53 (lanes 4,6). IPs were carried out using either polyclonal anti-M50 rabbit serum and protein A sepharose (lane 1-4) or polyclonal anti-M53 rat serum and protein G sepharose (lanes 5-8). Samples were separated by SDS-PAGE and visualized by autoradiography.



Supplementary Figure 2

Immunoprecipitation of M50/p35 with the specific antiserum.

After pull-down with protein A sepharose, lysates shown in Figure 5C were incubated with a specific antiserum directed against M50/p35 and precipitated with protein A sepharose. Samples were separated by SDS-PAGE.

