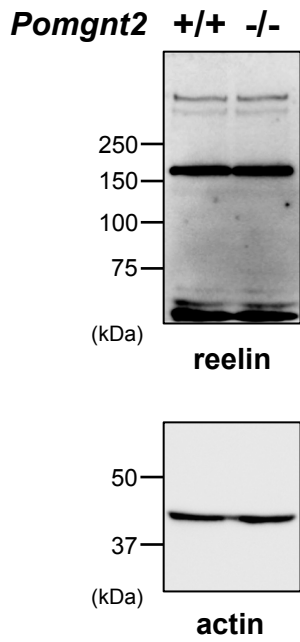
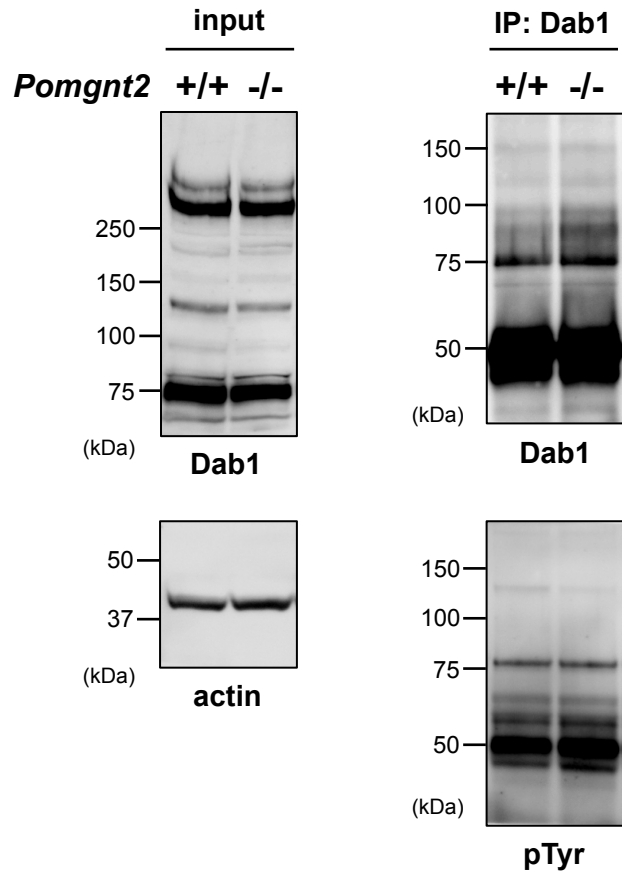


Supplementary Information

Ectopic clustering of Cajal–Retzius and subplate cells is an initial pathological feature in *Pomgnt2*-knockout mice, a model of dystroglycanopathy

Naoki Nakagawa¹, Hirokazu Yagi², Koichi Kato^{2,3}, Hiromu Takematsu¹, and Shogo Oka¹

¹Department of Biological Chemistry, Human Health Sciences, Graduate School of Medicine, Kyoto University, 53 Kawahara-cho, Shogoin, Sakyo-ku, Kyoto 606-8507, Japan; ²Graduate School of Pharmaceutical Sciences, Nagoya City University, 3-1 Tanabe-dori, Mizuho-ku, Nagoya 467-8603, Japan; ³Okazaki Institute for Integrative Bioscience and Institute for Molecular Science, National Institutes of Natural Sciences, 5-1 Higashiyama Myodaiji, Okazaki 444-8787, Japan.

a**b****Fig. S1 | Full-length blots.**

The regions of interest are highlighted in main Figs: (a) Fig. 7a; (b) Fig. 7b.