

Fig S1a. Ten-year relative survival of patients followed-up in 2002-2006 using period analysis, based on data from selected six prefectural population-based cancer registries in Japan. (Men, 15-99 years old)

CNS: Central Nervous System

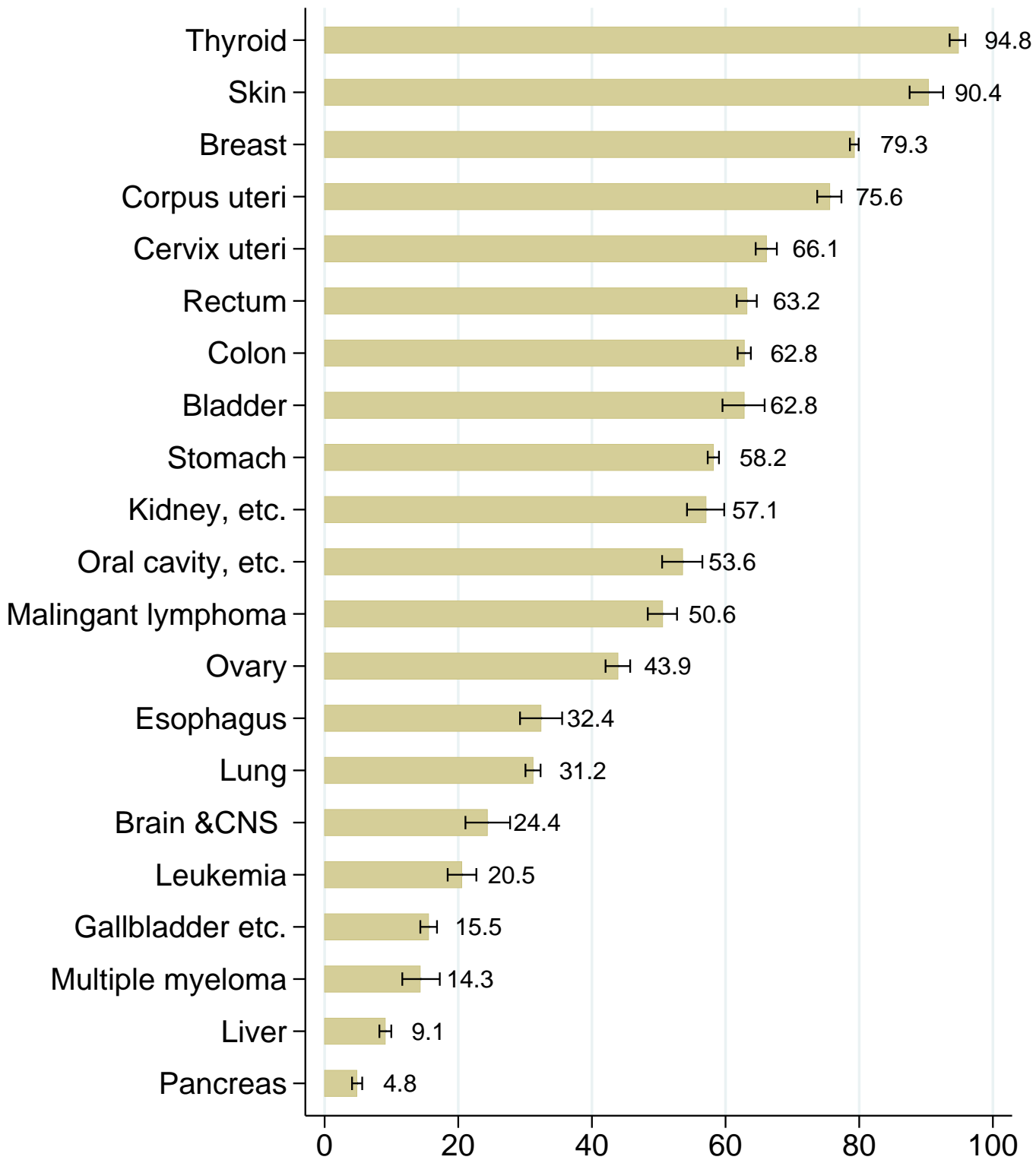


Fig S1b. Ten-year relative survival of patients followed-up in 2002-2006 using period analysis, based on data from selected six prefectural population-based cancer registries in Japan. (Women, 15-99 years old)

CNS: Central Nervous System

## Childhood Cancer (0-14 yrs old)

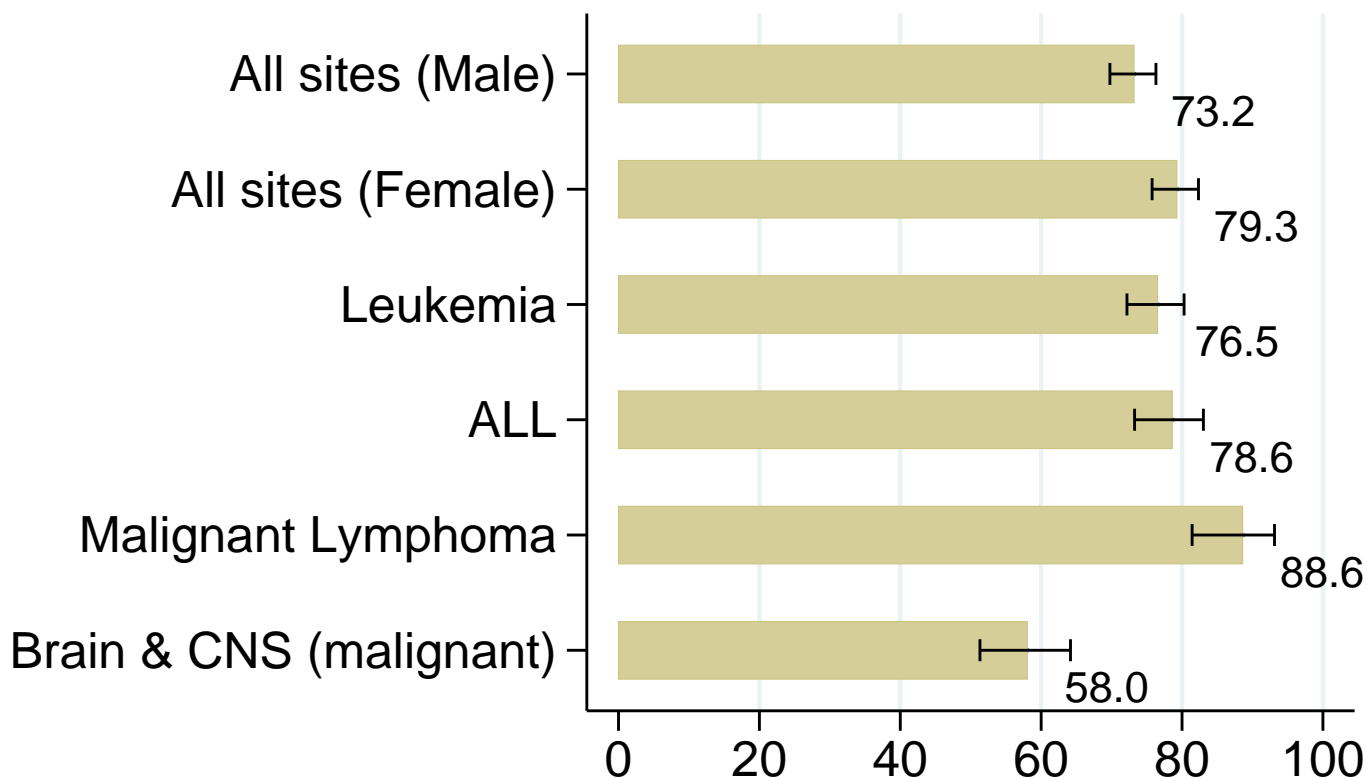


Fig S1c. Ten-year relative survival of childhood cancer patients followed-up in 2002-2006 using period analysis, based on data from selected six prefectural population-based cancer registries in Japan. (Both sexes, 0-14 years old)

ALL: Acute Lymphoblastic Leukemia  
CNS: Central Nervous System

## AYA Cancer (15-29 yrs old)

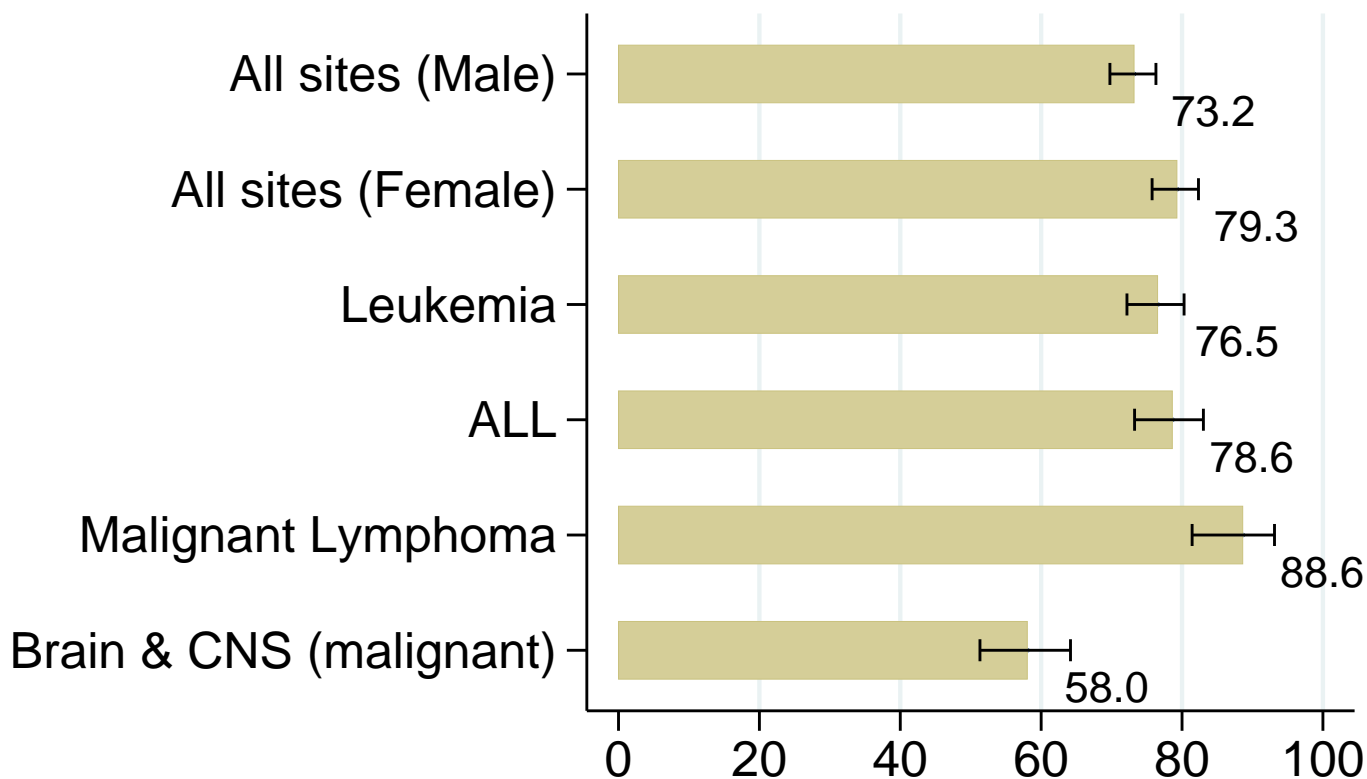


Fig S1d. Ten-year relative survival of cancer patients of adolescent and young adults followed-up in 2002-2006 using period analysis, based on data from selected six prefectural population-based cancer registries in Japan.

(Both sexes, 15-29 years old)

AYA: Adolescent and Young Adult  
ALL: Acute Lymphoblastic Leukemia  
CNS: Central Nervous System