

R. Kitagawa<sup>1</sup>, H. Kitagawa<sup>1</sup>, N. Izutani<sup>1</sup>,  
N. Hirose<sup>1,2</sup>, M. Hayashi<sup>1</sup>, and S. Imazato<sup>2\*</sup>

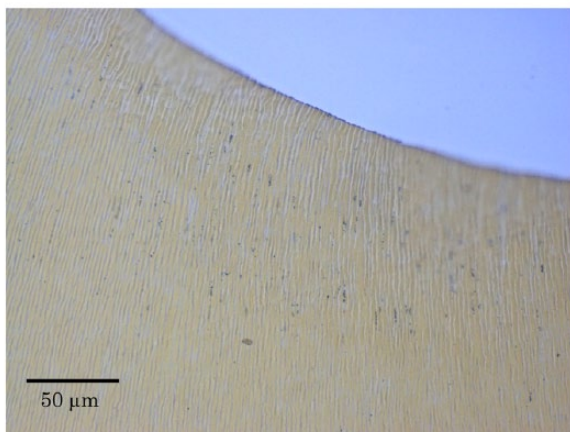
<sup>1</sup>Department of Restorative Dentistry and Endodontology, Osaka University Graduate School of Dentistry, Osaka, Japan; and <sup>2</sup>Department of Biomaterials Science, Osaka University Graduate School of Dentistry, Osaka, Japan; \*corresponding author, imazato@dent.osaka-u.ac.jp

*J Dent Res* DOI: 10.1177/0022034514549808

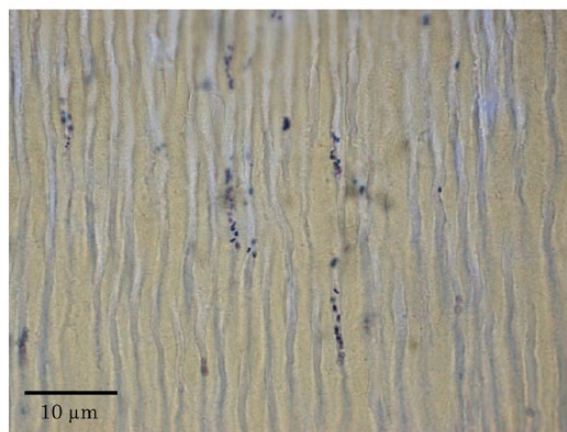
# Development of an Antibacterial Root Canal Filling System Containing MDPB

## APPENDIX

A



B



**Appendix Figure.** Microscopic images of a section obtained from *Enterococcus faecalis*-infected root canal model after Brown and Brenn staining. A thin section of the infected root model, 6 μm thick, was prepared, demineralized, fixed, and paraffin embedded. Bacterial penetration into the dentinal tubules was confirmed by Brown and Brenn staining. (A) Lower magnification, (B) higher magnification. Bacterial penetration into the dentinal tubules, reaching up to approximately 300 μm from the surface, can be seen.