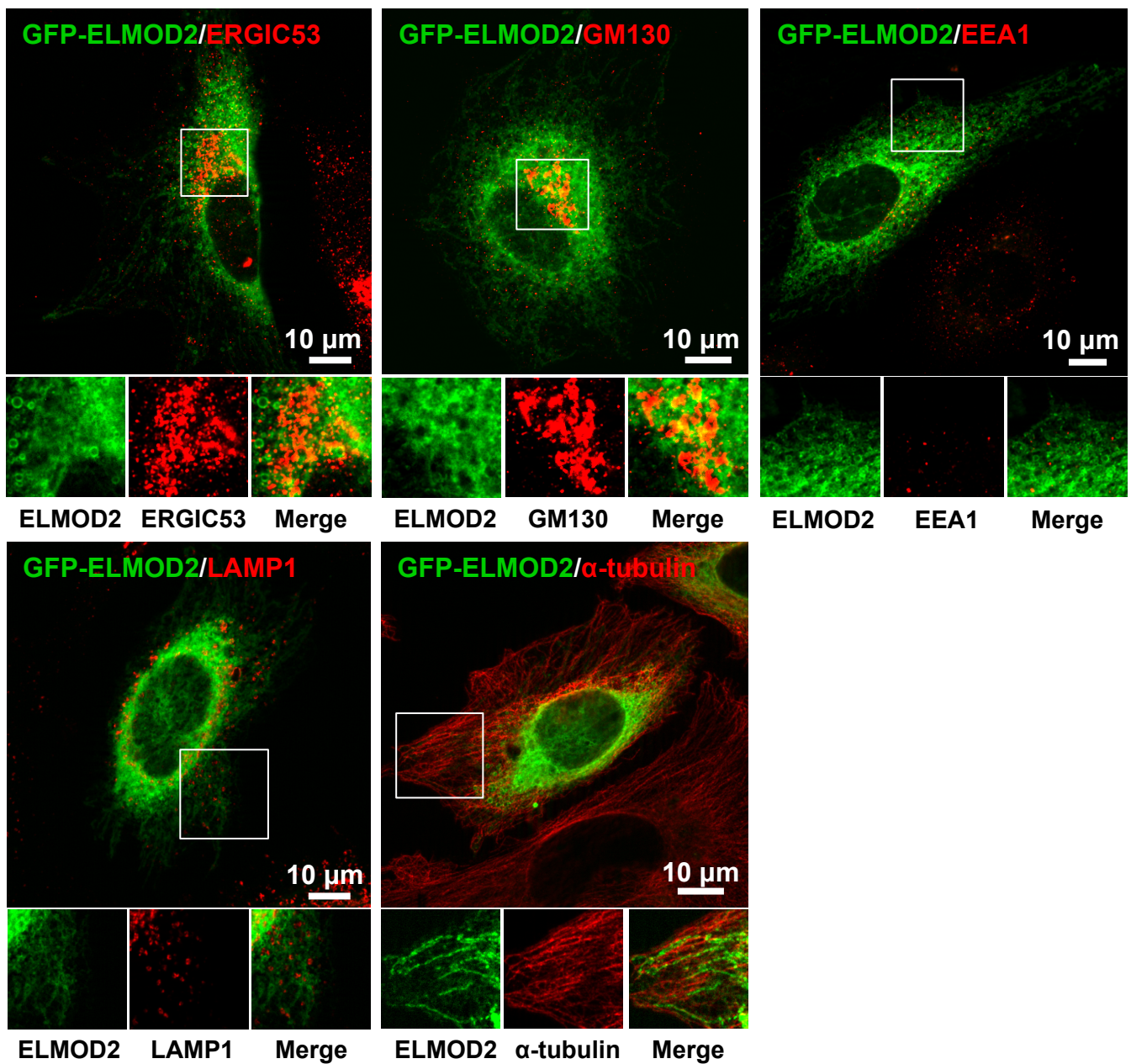


Supplemental Materials

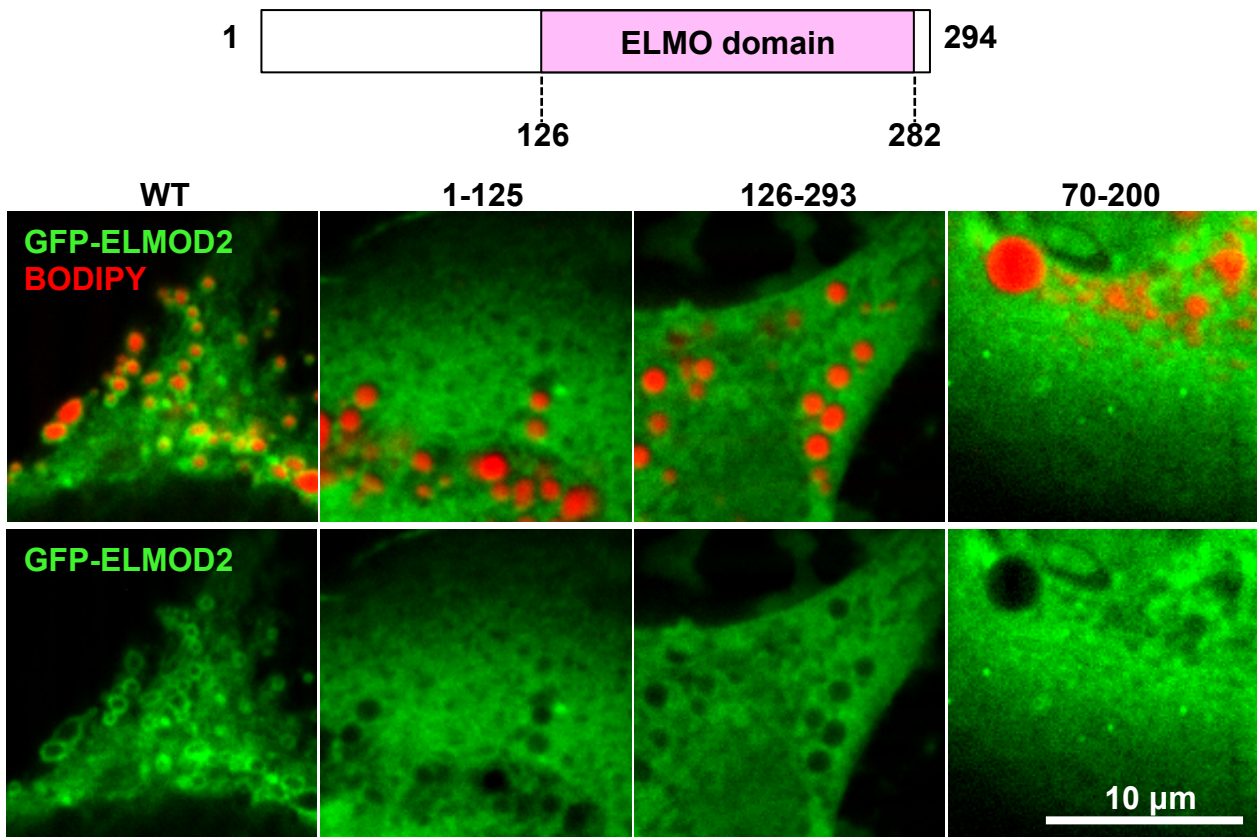
Molecular Biology of the Cell

Suzuki et al.



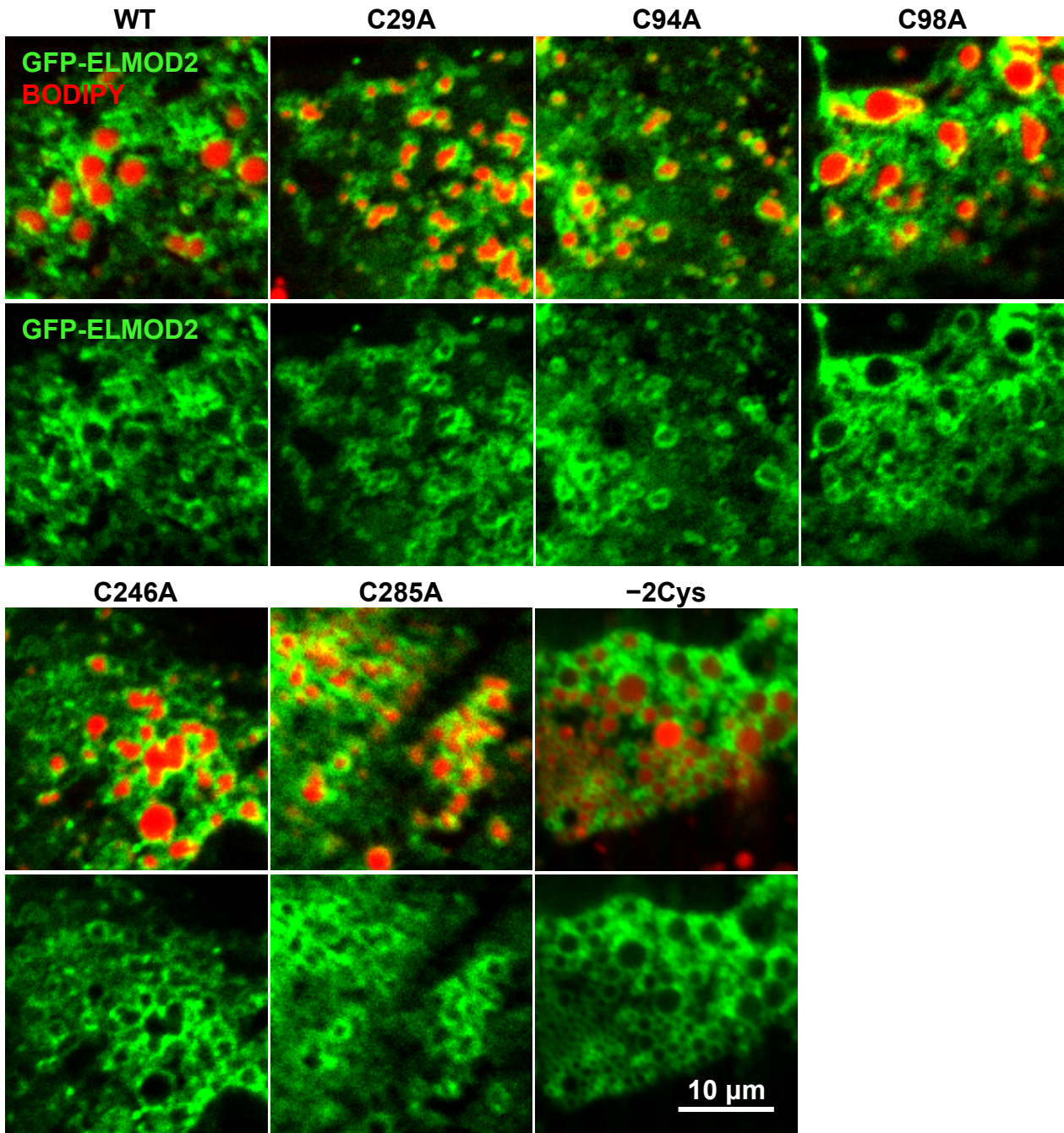
Supplementary Fig.S1

HeLa cells expressing GFP-ELMOD2 (green) were treated with 0.4 mM OA for 3 hr and immunolabeled for ERGIC58 (ERGIC), GM130 (Golgi), EEA1 (early endosome), LAMP1 (late endosome/lysosome), and tubulin (microtubules) (red). None of the markers showed colocalization with GFP-ELMOD2.



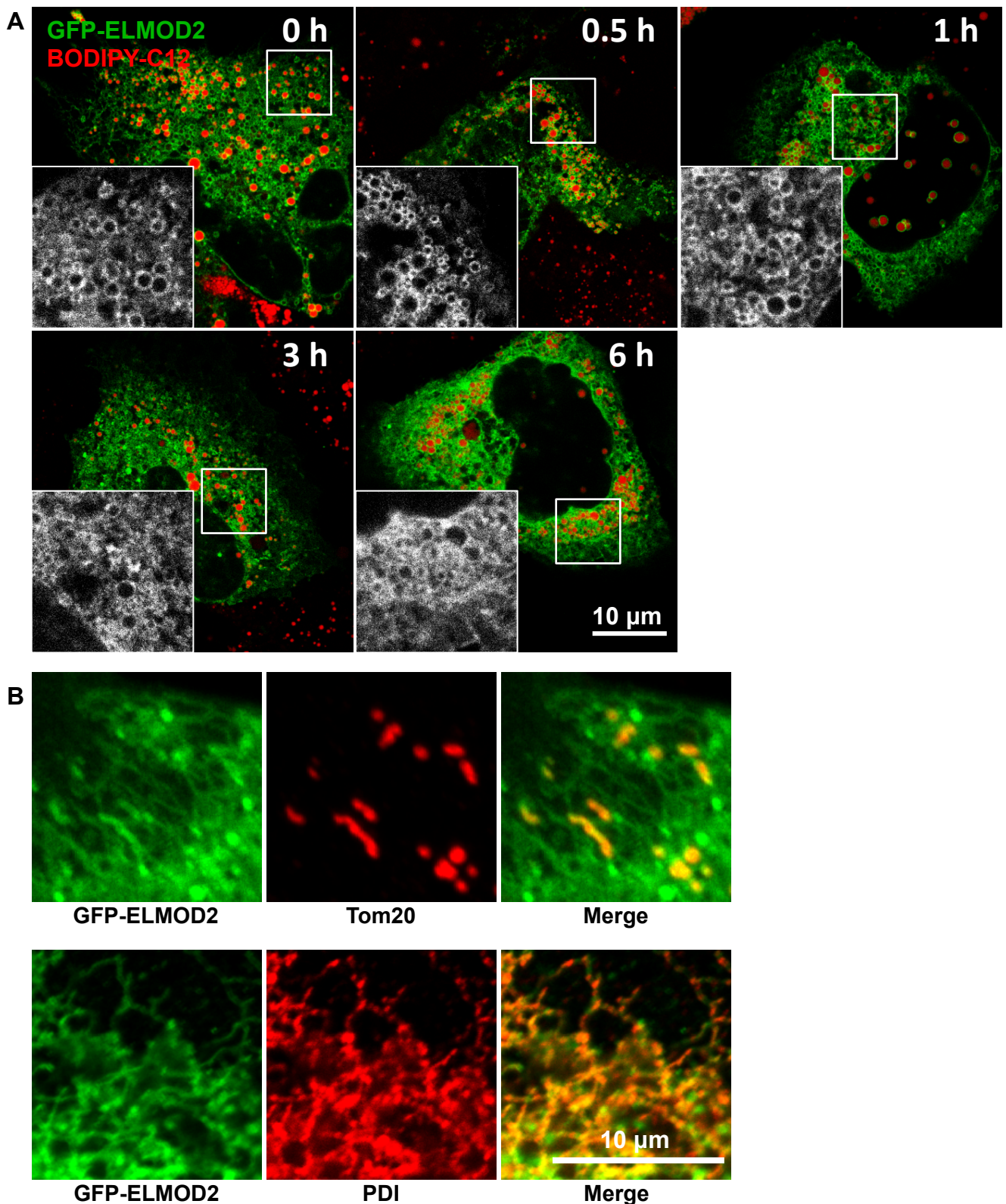
Supplementary Fig.S2

GFP-tagged ELMOD2 mutants, deleted either in the C-terminal ELMO domain (ELMOD2 [1-125]), in the N-terminal non-ELMO portion (ELMOD2 [126-293]), or in the middle portion (ELMOD2 [70-300]), were distributed diffusely throughout the cytoplasm without any concentration in LDs (red). HeLa cells were treated with 0.4 mM OA for 12 hr. LDs were stained with BODIPY558/568-C₁₂.



Supplementary Fig.S3

Replacement of one or two (C94 and C98: -2Cys) cysteine residues with alanine did not abolish the accumulation of ELMOD2 in LDs. Endogenous ELMOD2 in Huh7 cells was first knocked down and then transfected with siRNA-resistant cDNAs of GFP-tagged ELMOD2 mutants (green). LDs were stained with BODIPY558/568-C₁₂ (red).



Supplementary Fig.S4

- A. Huh7 cells expressing GFP-ELMOD2 (WT) (green) were incubated with 100 μ M 2-bromopalmitate for 0, 0.5, 1, 3, or 6 hr. LDs of these cells were stained with BODIPY558/568- C_{12} (red). After 6 hr of treatment, GFP-ELMOD2 (WT) was apparently dissociated from LDs.
- B. Huh7 cells expressing GFP-ELMOD2 (WT) (green) were incubated with 100 μ M 2-bromopalmitate for 12 hr. The cells were labeled for Tom20 (mitochondria) and PDI (ER) (red). Even after 12 hr of treatment, GFP-ELMOD2 (WT) localized in both mitochondria and the ER.