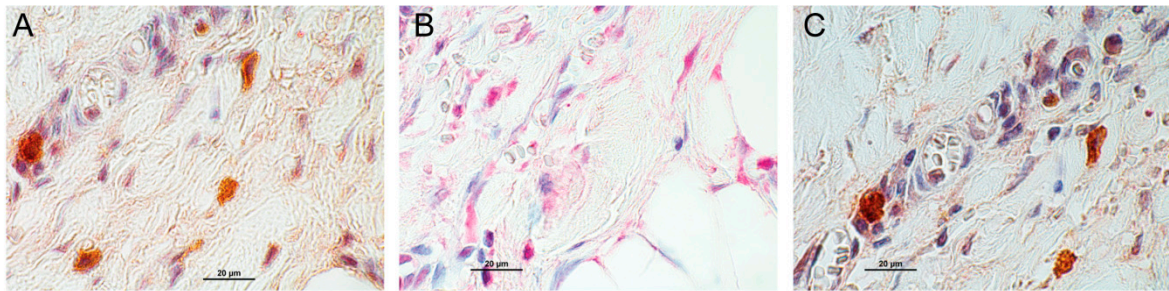
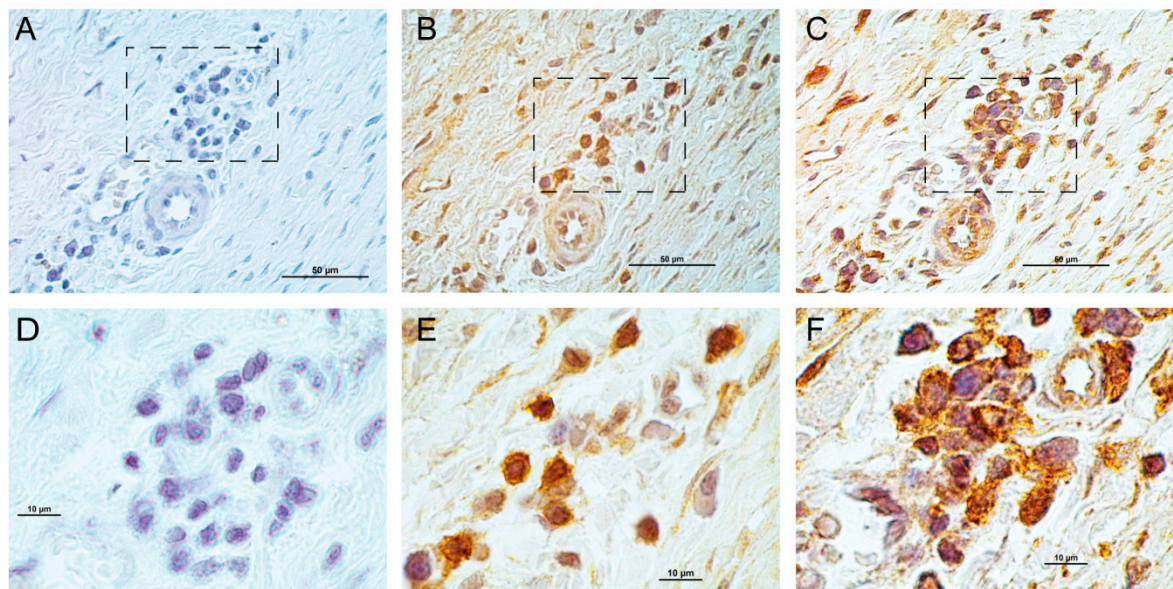


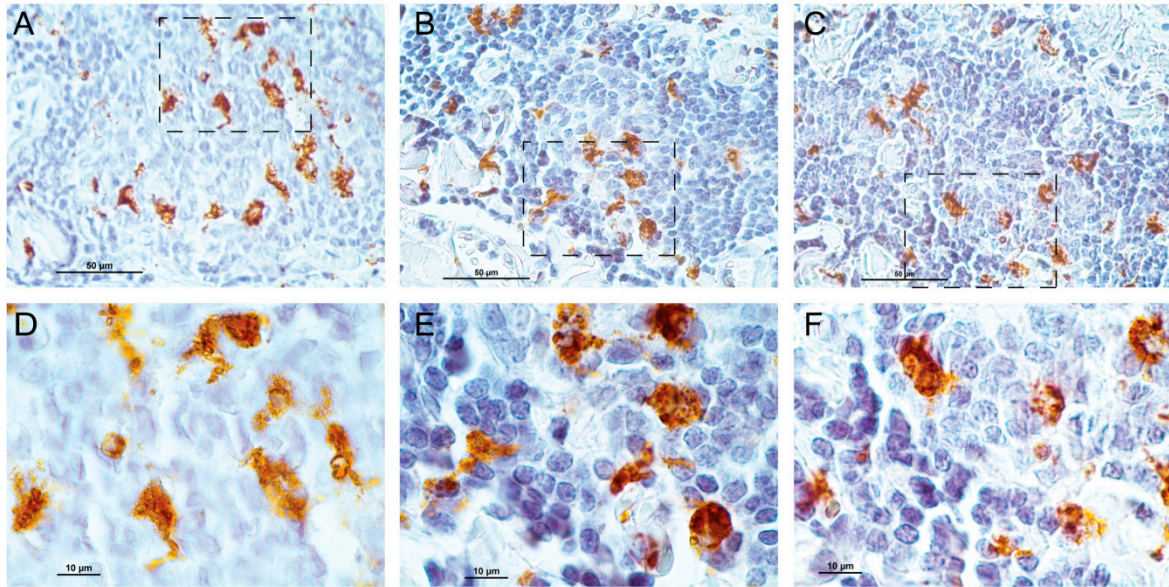
## Supplementary Information



**Figure S1.** Co-expression of GRZ and HCST in AAA tissue. Single staining of GRZ (A); and HCST (B); as well as double staining (C) of GRZ and HCST are shown in the same tissue sample (WSU052) using serial sections. Macrophages show simultaneous staining for GRZ (brown) and HCST (red). Scale bar = 20  $\mu\text{m}$ .



**Figure S2.** Single staining of aortic AAA tissue with an antibody against CD8 (A,D); and double staining for CD8-TYROBP (B,E); and CD8-PLCG2 (C,F). The single staining with anti-CD8 shows red staining in the cytoplasm of several lymphocytes, which can be seen better if the image D is viewed at 400%. The double staining images for CD8 (brown) and TYROBP (red) in images B and E, as well as for CD8 (red) and PLCG2 (brown) in images C and F demonstrate that CD8 positive lymphocytes express TYROBP and PLCG2. Lower magnification images are on the top row (A–C) and higher magnification images of the areas boxed with dashed lines are shown in the lower row (D–F). The images were taken from the same tissue sample (WSU075) using serial sections. The slides were counterstained with hematoxylin, and nuclei stain blue-purple color. Lymphocytes show intense blue staining, since they have little cytoplasm. Scale bar = 50  $\mu\text{m}$  in the upper row and 10  $\mu\text{m}$  in the lower row.



**Figure S3.** Single staining of aortic AAA tissue with an antibody against CD68 (**A,D**); and double staining for CD68-TYROBP (**B,E**); and CD68-PTK2B (**C,F**). Intense brown staining is seen in monocytes/macrophages (**A,D**). The double staining for CD68 (brown) and TYROBP (red) in the images **B** and **E**, and CD68 (brown) and anti-PLCG2 (red) in images (**C**) and (**F**) shows that monocytes/macrophages express TYROBP and PLCG2. Lower magnification images are on the top row (**A–C**) and higher magnification images of the areas boxed with dashed lines are shown in the lower row (**D–F**). The images were taken from the same tissue sample (WSU052) using serial sections. The slides were counterstained with hematoxylin, and nuclei stain blue-purple color. Lymphocytes show intense blue staining, since they have little cytoplasm. Scale bar = 50  $\mu\text{m}$  in the upper row and 10  $\mu\text{m}$  in the lower row.