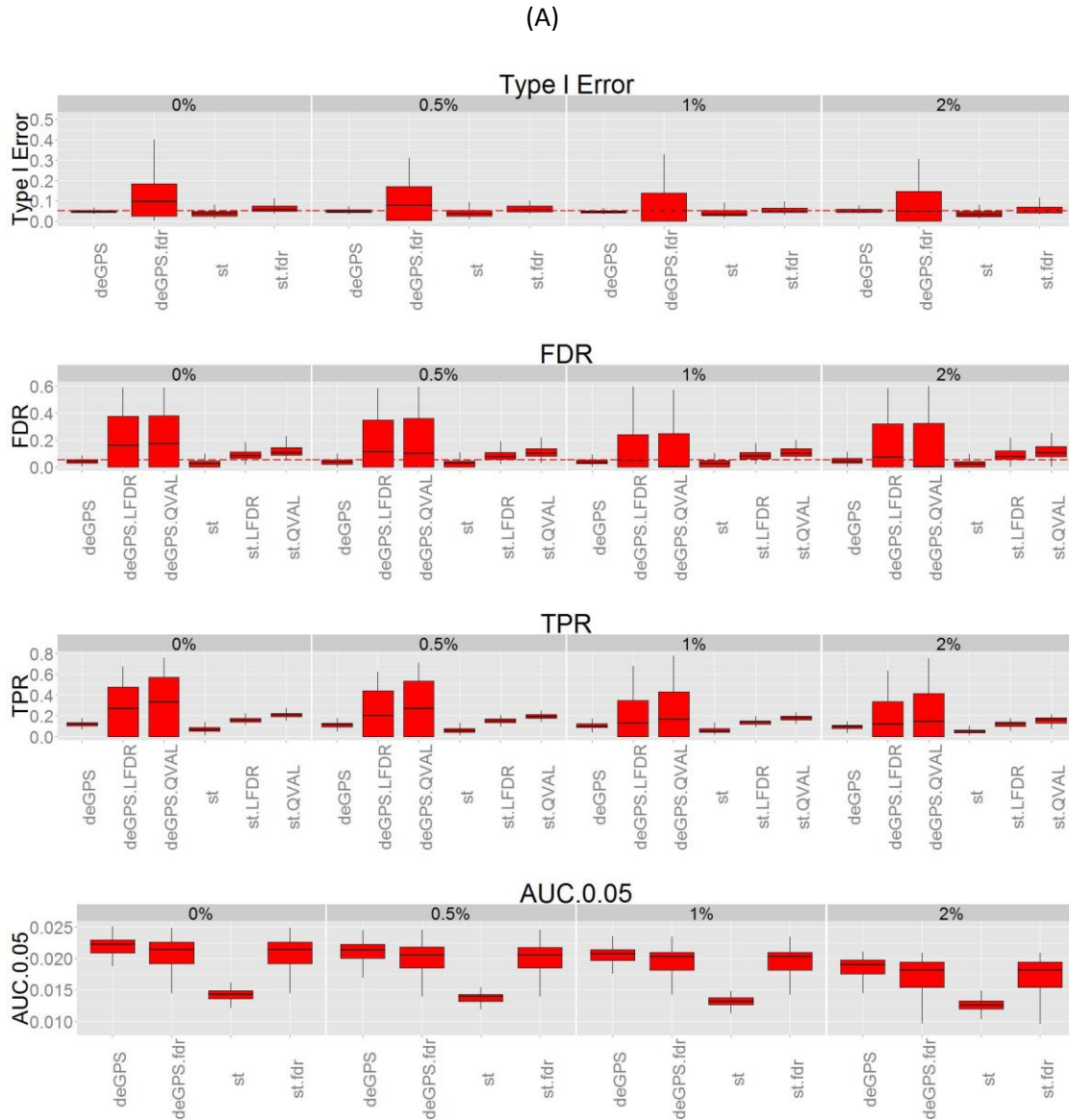


Figure S6-Effects of different FDR adjustment methods and T-statistics on the performance on deGPS. Sample sizes were set as (A) 5 and (B) 8 subjects per group. The default FDR adjustment of deGPS is BH method; two additional FDR adjustments QVAL and LFDR were evaluated. The default statistic of deGPS is ordinary T-statistic in permutations; regularized T-statistic (st) was evaluated.



(B)

