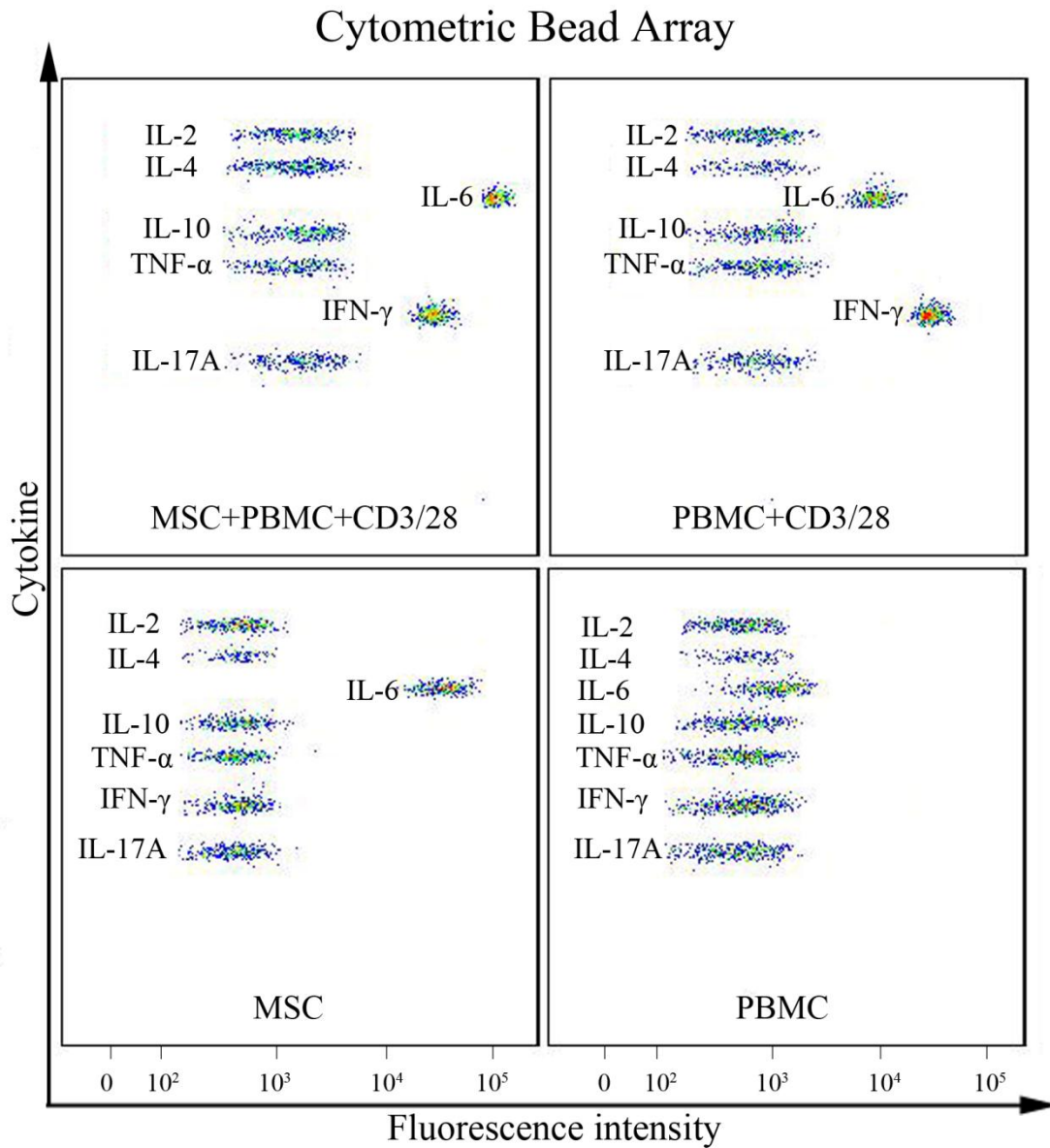


Supplementary Figure and Legend



SUPPLYMENTARY FIGURE 1. Cytokine secretion measured by CBA under different circumstances.

MSCs secreted only IL-6 but not other cytokines. In the co-culture of MSCs and PBMCs, the production of IL-6 and IFN- γ was significantly high, especially IL-6. These seven bands stood for seven different cytokines within the CBA detecting spectrum. The fluorescence intensities were positively related to cytokine concentrations.