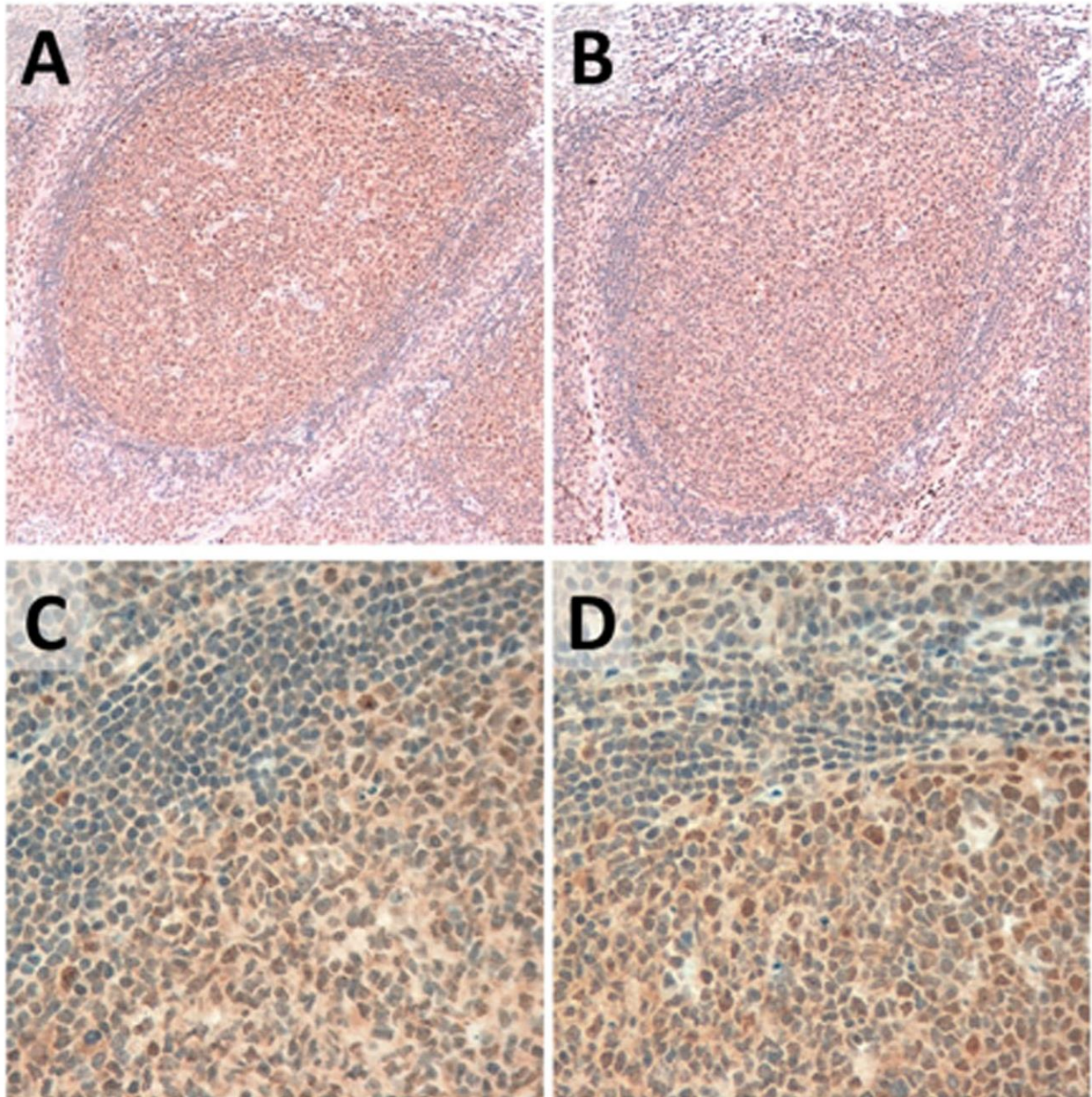


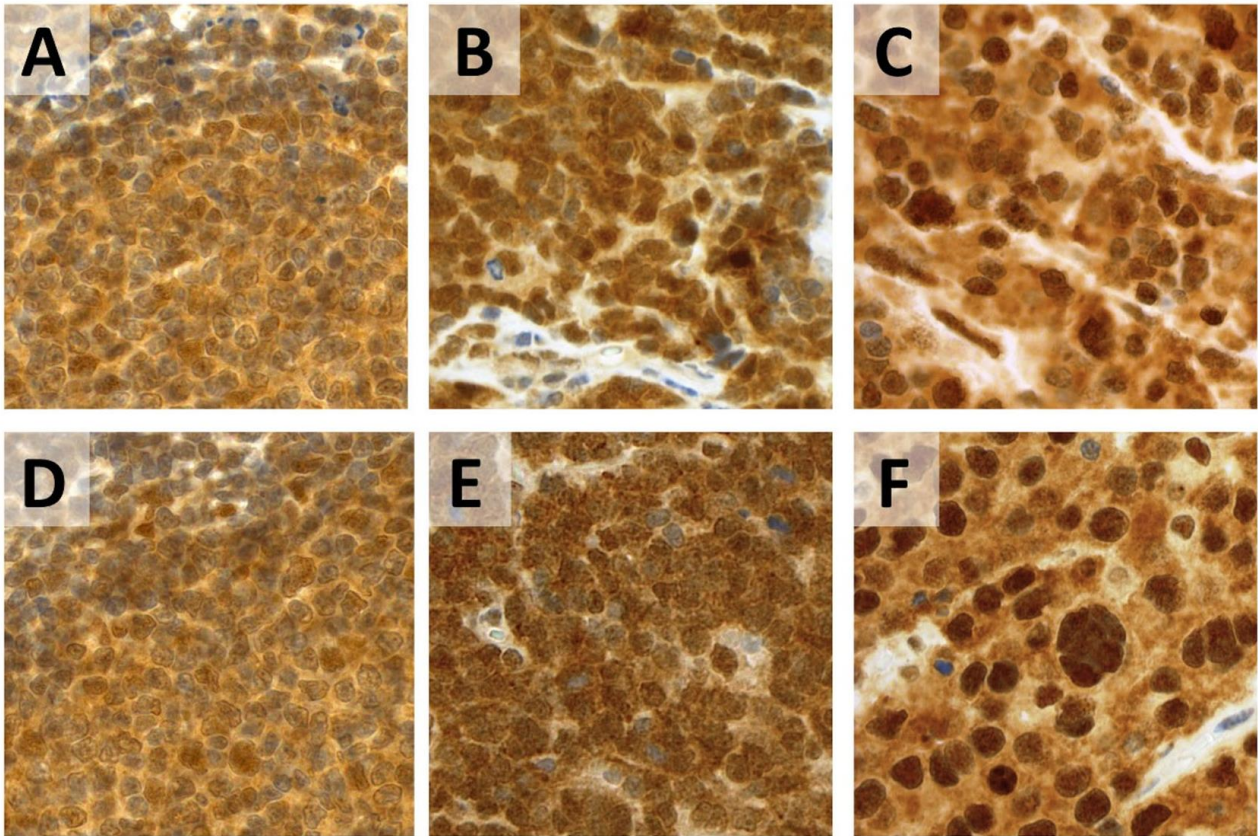
**Protein kinase CK2 is widely expressed in follicular, Burkitt and Diffuse Large B-cell Lymphomas and propels malignant B-cell growth**

**SUPPLEMENTARY MATERIAL**



**Supplemental Figure 1: CK2 $\alpha$  and CK2 $\beta$  Immunohistochemical expression in non-neoplastic lymphoid tissue.** CK2 $\alpha$  (A,C) and CK2 $\beta$  (B,D) expression in normal tonsil showing positivity of centrocytes and centroblasts of reactive germinal centers. Mantle zone B-cells are consistently negative for both markers (Immunoperoxidase stain; original magnification, x5 and x20).





**Supplemental Figure 2: Nuclear and Cytoplasmic expression of CK2 $\alpha$  and CK2 $\beta$  in Follicular, Burkitt and Diffuse Large B-Cell Lymphoma. (A-C)** Representative examples of CK2 $\alpha$  score 3+ immunostain in Follicular Lymphoma (A), Burkitt Lymphoma (B) and Diffuse Large B-cell Lymphoma (C);. in all cases, cytoplasmic and nuclear expression is observed. **(D-F)** CK2 $\beta$  immunostain in Follicular Lymphoma (D), Burkitt Lymphoma (E) and Diffuse Large B-cell Lymphoma (F) showed similar results with nuclear and cytoplasmic protein expression (Immunoperoxidase stain; original magnification, x40).