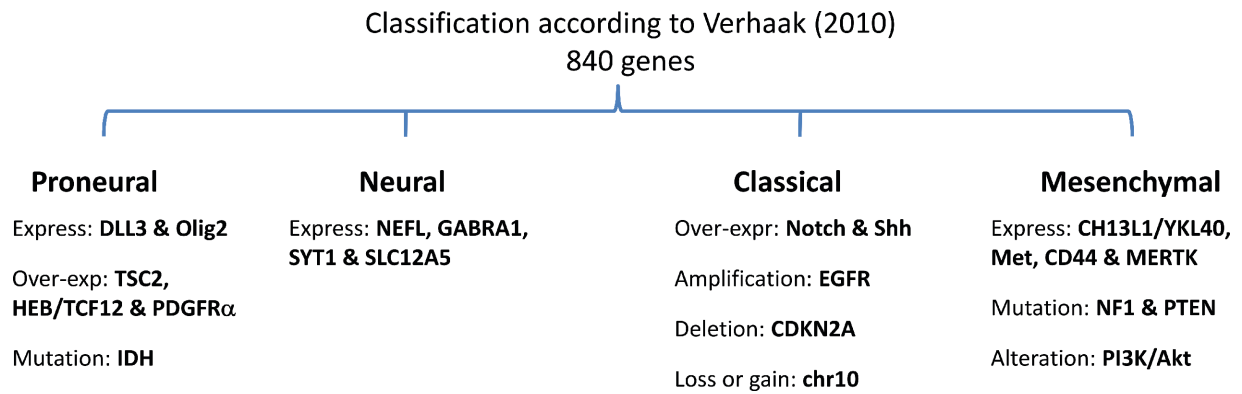
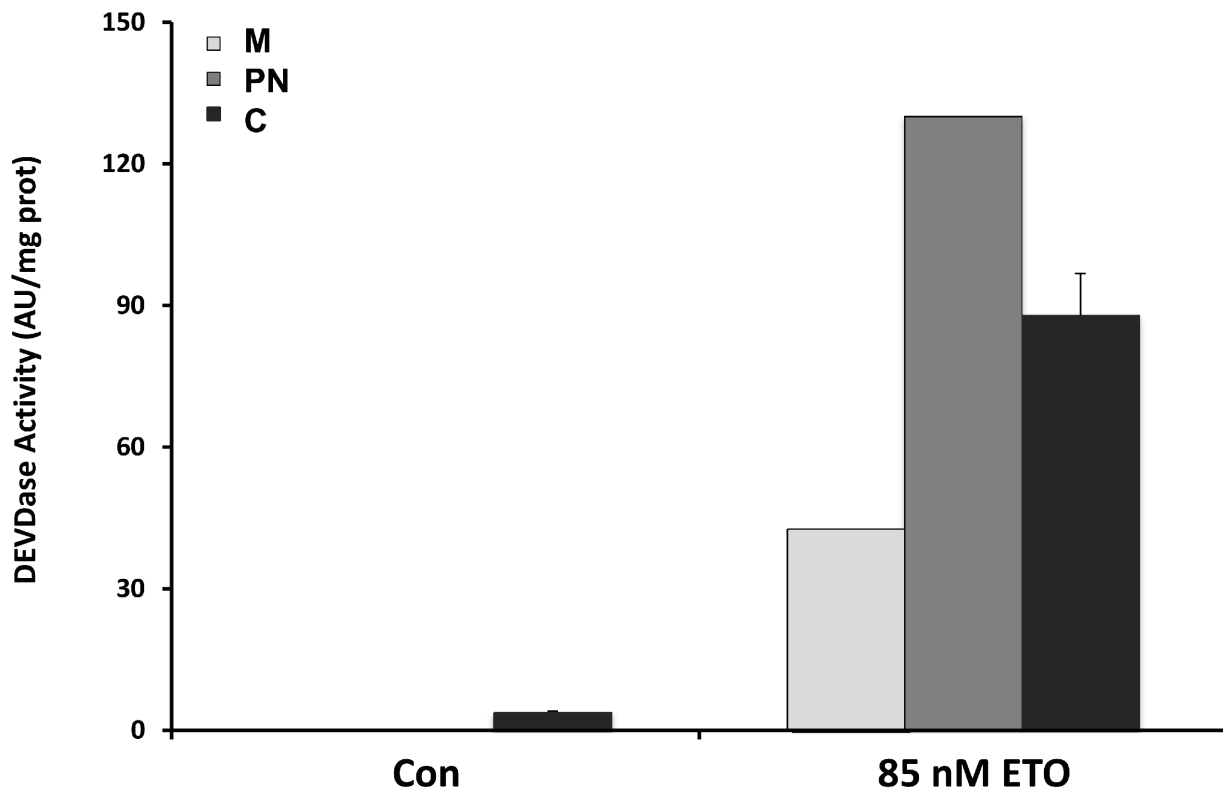


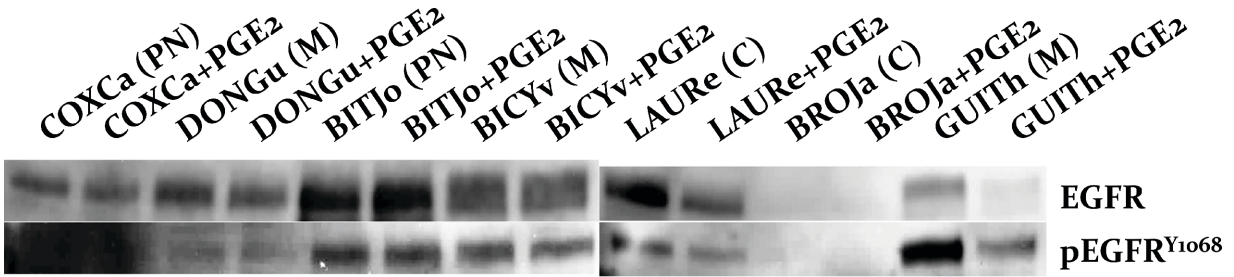
SUPPLEMENTARY FIGURES



Supplementary Figure S1: Some specific molecular characterization of the different primary cultures according to Verhaak et al (ref 16).



Supplementary Figure S2: Caspase dependent apoptosis can be induced in the GBM primary cultures by Etoposide (85 nM). Mesenchymal, proneural and classical primary cultures ( $n = 3$ ) were treated with Etoposide (ETO) for 48 hrs before caspase 3 assays.



72 h PGE<sub>2</sub> treatment

**Supplementary Figure S3: Effect of PGE<sub>2</sub> on EGFR expression and phosphorylation after 72 hrs exposure.** Immunoblot with antiEGFR and anti PhosphoEGFR antibodies were performed as described in the “materials and methods” section.