

Table E1: Disease parameters in subjects with idiopathic intracranial hypertension at time of diagnosis, time of electrophysiological testing and repeat intracranial pressure measurement

ID	diagnosis			PhNR testing day			follow up*
	ICP (cm H ₂ O)	Papilledema grade	SAP-MD (dB)	Interval (days since diagnosis)	Papilledema grade	SAP-MD (dB)	ICP (cm H ₂ O)
1	36	1	-7.31	46	1	-7.31	39
2	34	1	-4.41	3	1	-4.41	29
3	46	4	-4.32	82	1	-2.63	22
4	25	atrophy	-28.42	18	atrophy	-25.97	
5	35	atrophy	-25.58	52	atrophy	-25.58	
6	29	1	-2.62	231	0	-2.47	
7	35	3	-10.44	11	3	-10.3	
8	45	4	-7.54	24	4	-3.99	
9	NA	NA	NA	NA	2	-0.89	25
10	48	3	-29.37	32	2	-26.55	

ICP = intracranial pressure, measured as opening pressure during lumbar puncture, SAP-MD = standard automated perimetry mean deviation, PhNR = photopic negative response, NA = not available in subject who had electrophysiological testing prior to diagnostic lumbar puncture
 * indicates ICP measurements performed in some subjects following PHNR testing day

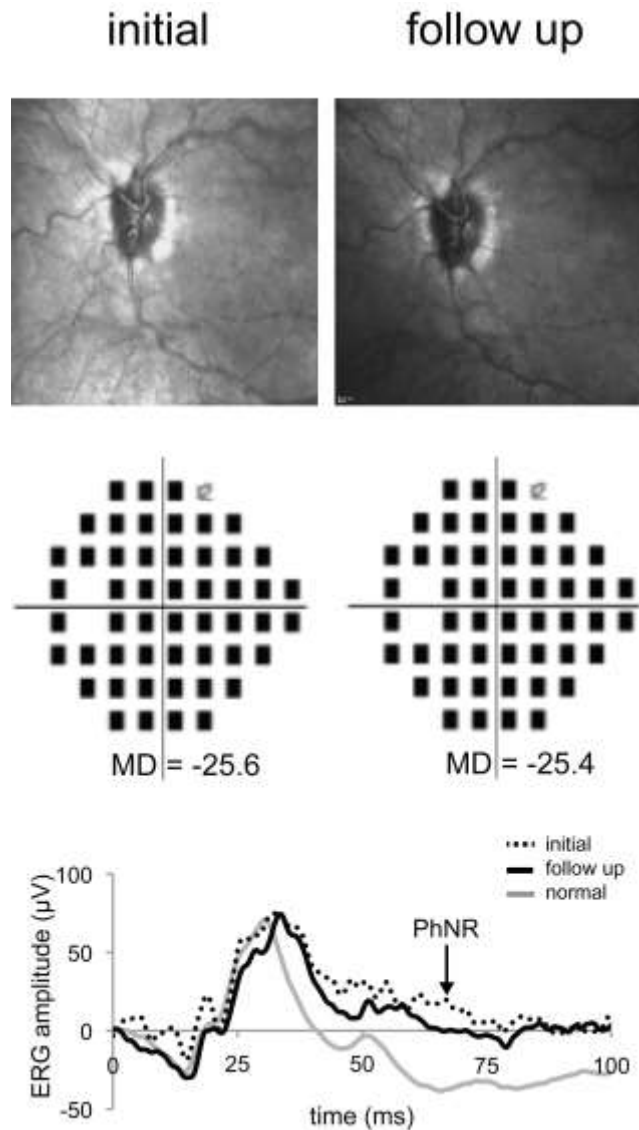


Fig. E1: Comparison of Initial and follow up observations for subject 5.

The top row shows initial (left) and follow up (right) optic disc appearance as documented using scanning laser ophthalmoscopy (Spectralis, Heidelberg Engineering, Germany). The middle row shows initial (left) and follow up (right), standard automated perimetry total deviation plots and mean deviation values (Humphrey SITA 24-2). The bottom graph shows the photopic single flash ERG responses. The arrow shows the time at which the photopic negative response amplitudes were calculated.