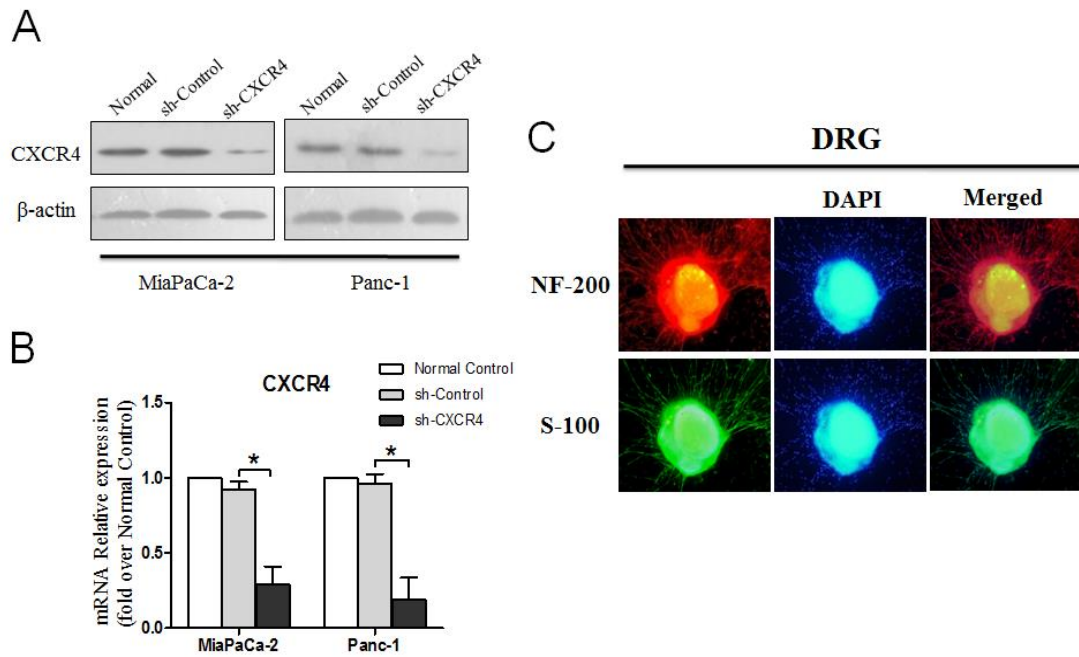


Stromal-derived factor-1 α /CXCL12-CXCR4 chemotactic pathway promotes perineural invasion in pancreatic cancer

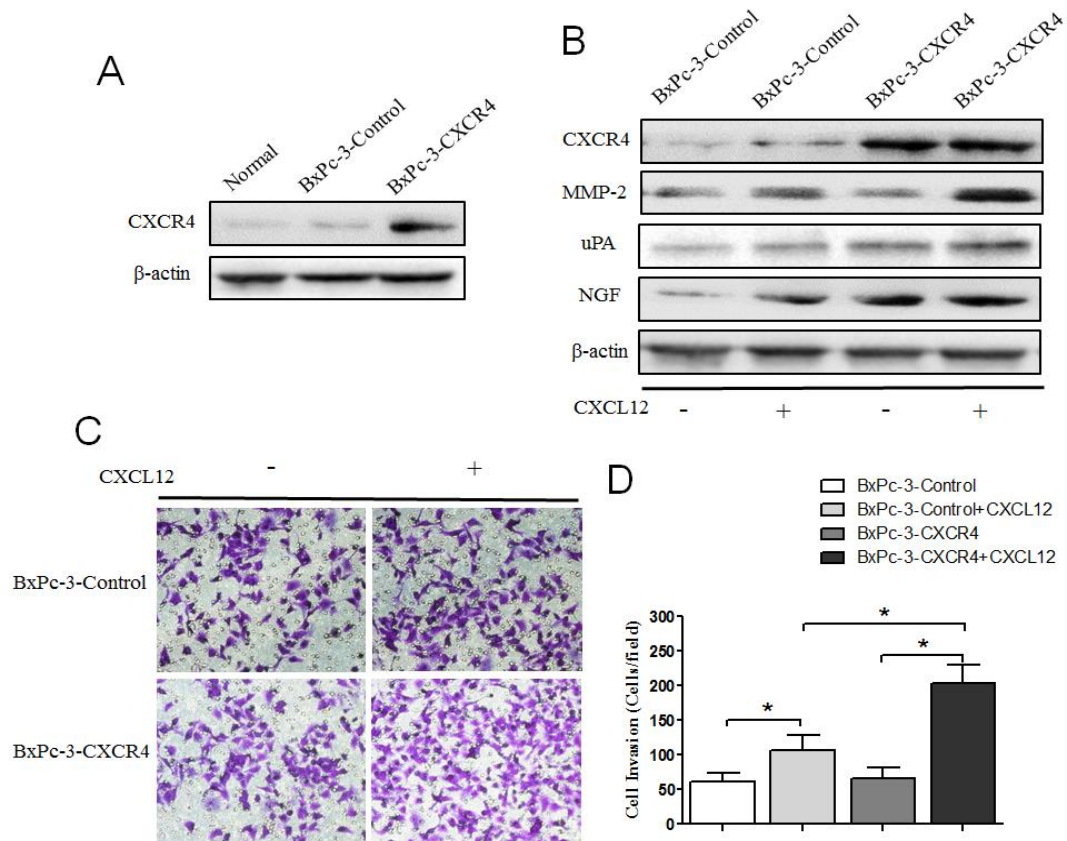
Supplementary Material

Table S1: PCR Primer Sequences

Genes	Primer Sequence
Human	
β -actin	P1: 5'- AGCGAGCATCCCCCAAAGTT -3' P2: 5'- GGGCACGAAGGCTCATCATT -3'
CXCL12	P1: 5'- GTGGTCGTGCTGGTCCTC -3' P2: 5'- CACACTTGTCTGTTGTTGTTCTTC -3'
CXCR4	P1: 5'- TCTGTGACCGCTTCTACC -3' P2: 5'- AGGATGAGGATGACTGTGG -3'
NGF	P1: 5'- GTCATCATCCCATCCCATCTTCC -3' P2: 5'- CACTGTTGTTAATGTTACCTCTCC -3'
uPA	P1: 5'- TAAGAGCTGGTGTCTGATTG -3' P2: 5'- TTGGATGAACTAGGCTAAAA -3'
MMP-2	P1: 5'- GATGATGCCTTTGCTCGTGC -3' P2: 5'- CAAAGGGGTATCCATCGCCA -3'
Rat	
β -actin	P1: 5'- TCAGGTCATCACTATCGGCAAT -3' P2: 5'- AAAGAAAGGGTGTAACCGC -3'
CXCL12	P1: 5'- ATGTCGCCAGAGCCAACG -3' P2: 5'- TCCACTTTAATTTTCGGGTCAATGC -3'
CXCR4	P1: 5'- CCGTGGCTGACCTCCTTTG -3' P2: 5'- TGGTGGCGTGGACAATGGC -3'



Supplementary Fig. 1: The establishment of PCa cells with stable CXCR4-silencing. After transfection with control shRNA or CXCR4 shRNA, the expression level of the CXCR4 protein (A) and mRNA (B) in Panc-1 and MiaPaCa-2 cells was evaluated by western blot and real-time PCR. The expression level of each target gene was quantified relative to β -actin as a normalization control. (C) DRGs were labeled with fluorescence-conjugated S-100 (green) and NF-200 (red) specific antibodies. Nuclei were stained with DAPI (blue; 100 \times magnification);



Supplementary Fig. 2: (A) The expression level of CXCR4 protein in BxPc-3 cells transduced by lentiviral vectors for CXCR4-GFP or GFP control was evaluated by western blot. (B) Western blot was performed to evaluate the effect of enforced expression of CXCR4 in BxPc-3 cells on the MMP-2, uPA and NGF at protein level. (C) A Matrigel invasion assay was performed to evaluate the invasion capacity of BxPc-3-CXCR4 cells. (D) The number of invaded cells was quantified by counting the number of cells from 10 random fields at 200 \times magnification. The data are representative of 3 independent experiments. Column: mean (n = 10); bar: SD; * P < 0.05.